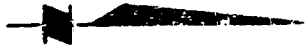




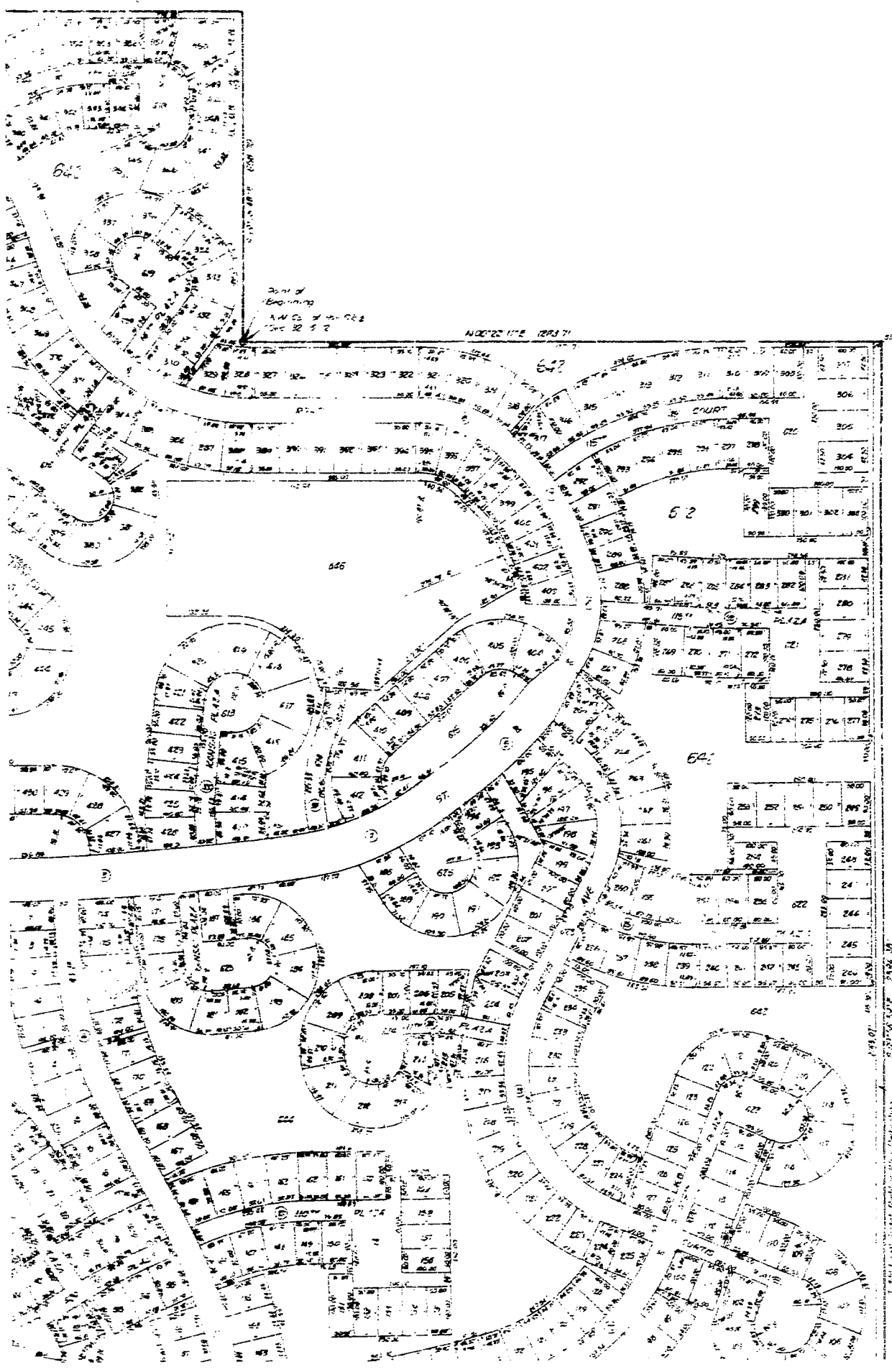


1471-261

PLAT 140



SCALE 1"=100'



169.75

1471-261

PLAT 140





N 69° 50' 17" W 2402.27'

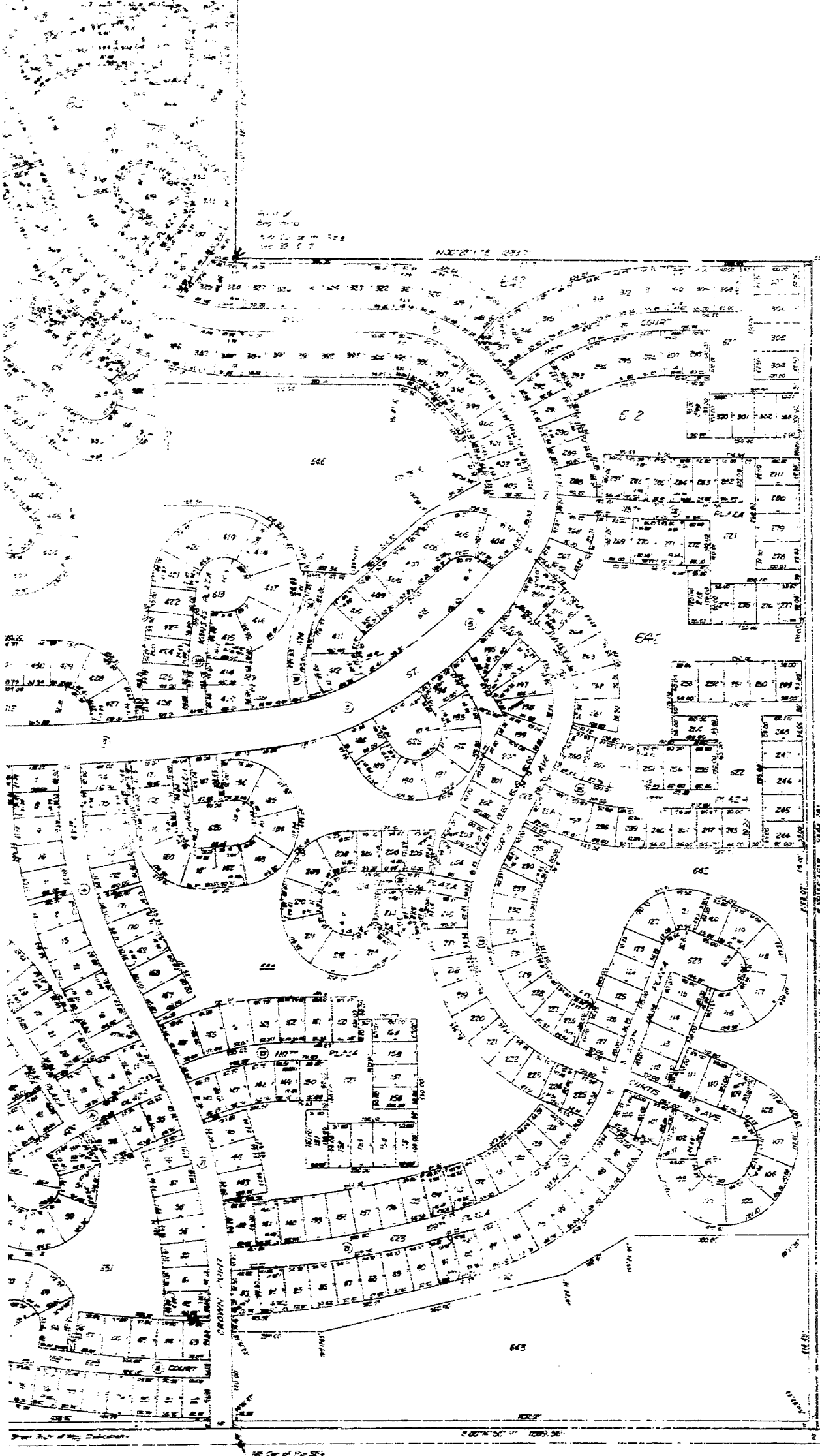
E 66° 57' 1"

642

110' 03" 637' 00"

SEE PLANS

SEE PLANS



164.75

73.1288

144

7. Add front Street Right of Way Deduction. 8.35' 50\"/>

**ELLIOTT & BLACK**  
 ARCHITECTS  
 100 WEST CHERRY BLVD. CHICAGO, ILLINOIS 60601  
 (312) 467-1000



Faint, illegible text at the top of the page, possibly a header or title.



Text block on the left side, second from top, containing several lines of printed text.



Text block on the left side, third from top, containing several lines of printed text.



Text block on the left side, fourth from top, containing several lines of printed text.



Text block on the left side, fifth from top, containing several lines of printed text.



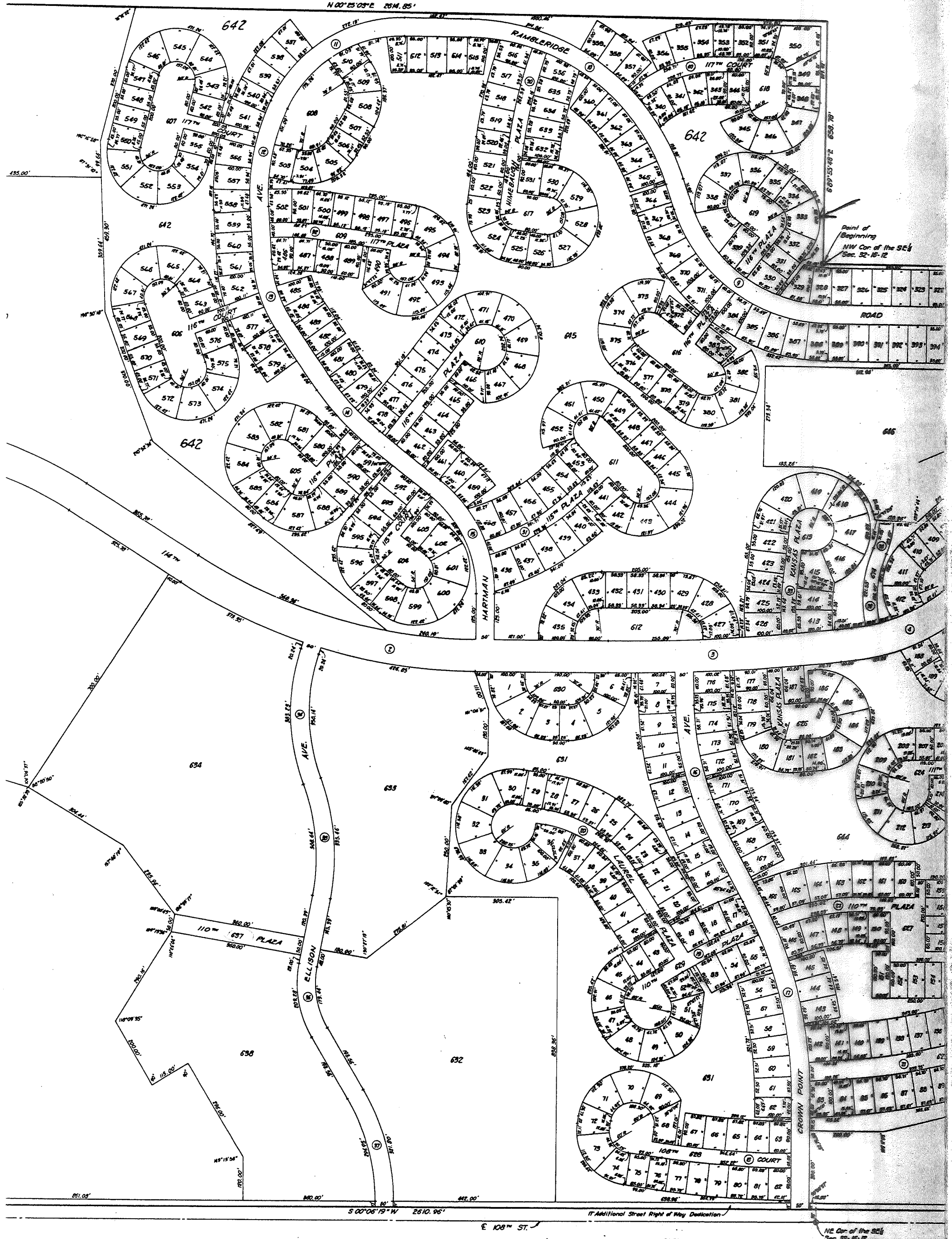
Text block on the left side, sixth from top, containing several lines of printed text.

Table with multiple columns and rows of data, possibly a ledger or record book, located at the bottom left of the page.

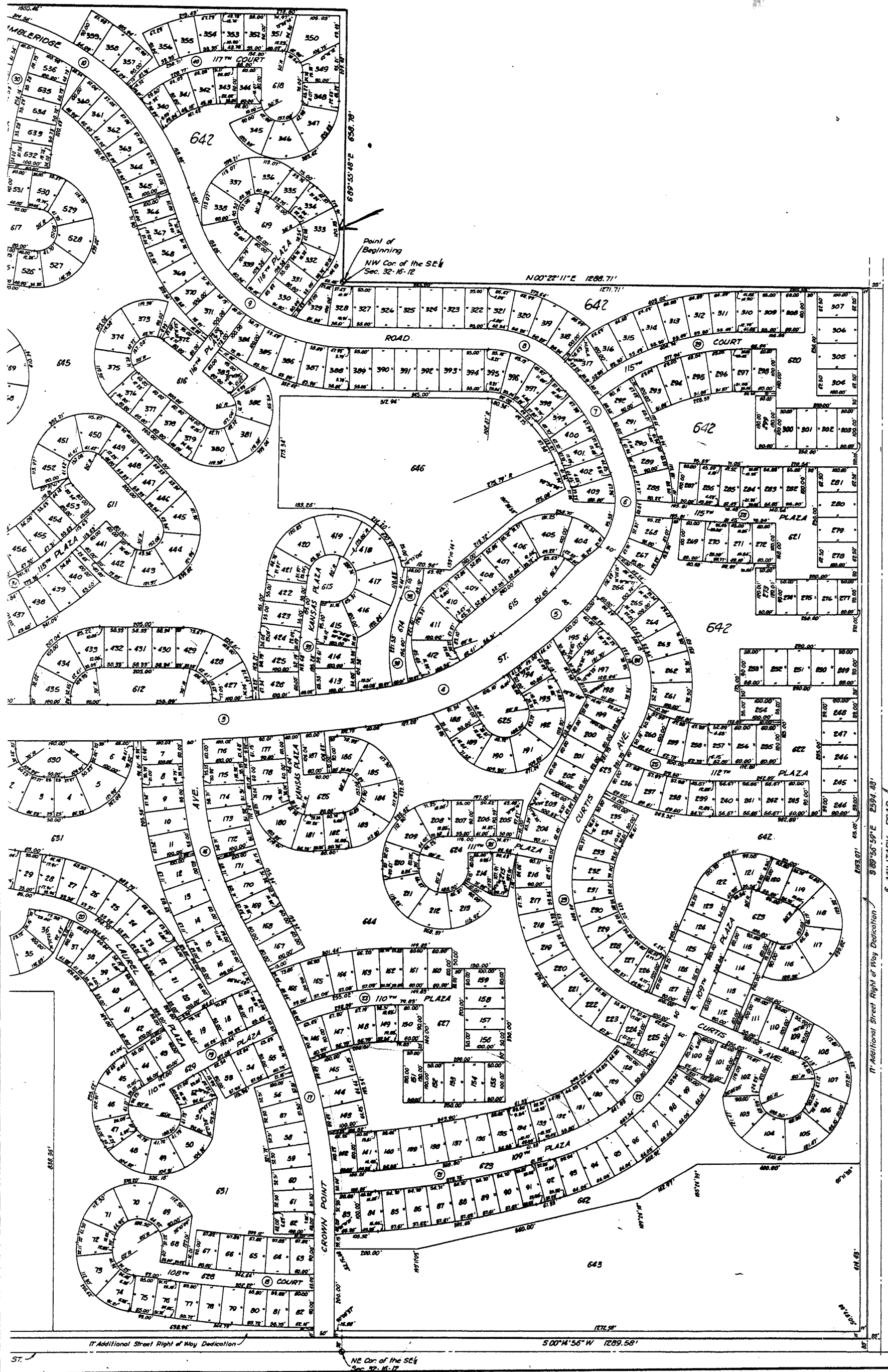
Vertical text on the right side of the page, possibly a date or reference number.



OF THE SW 1/4 OF SAID SECTION 32, ALL IN TOWNSHIP 16  
NORTH, RANGE 12 EAST OF THE 6TH P.M.,  
DOUGLAS COUNTY, NEBRASKA







14 ENTERED IN NUMERICAL INDEX AND RECORDED IN THE REGISTER OF DEEDS OFFICE IN DOUGLAS COUNTY, NEBRASKA  
 DAY OF January 1923 AT 1:11 P.M. C. HAROLD OSTLER, REGISTER OF DEEDS

**ELLIOTT & BLACK**  
 SURVEYORS  
 1015 W. CENTER ST. LINCOLN, NEBRASKA 68502  
 TEL. 333-7228



