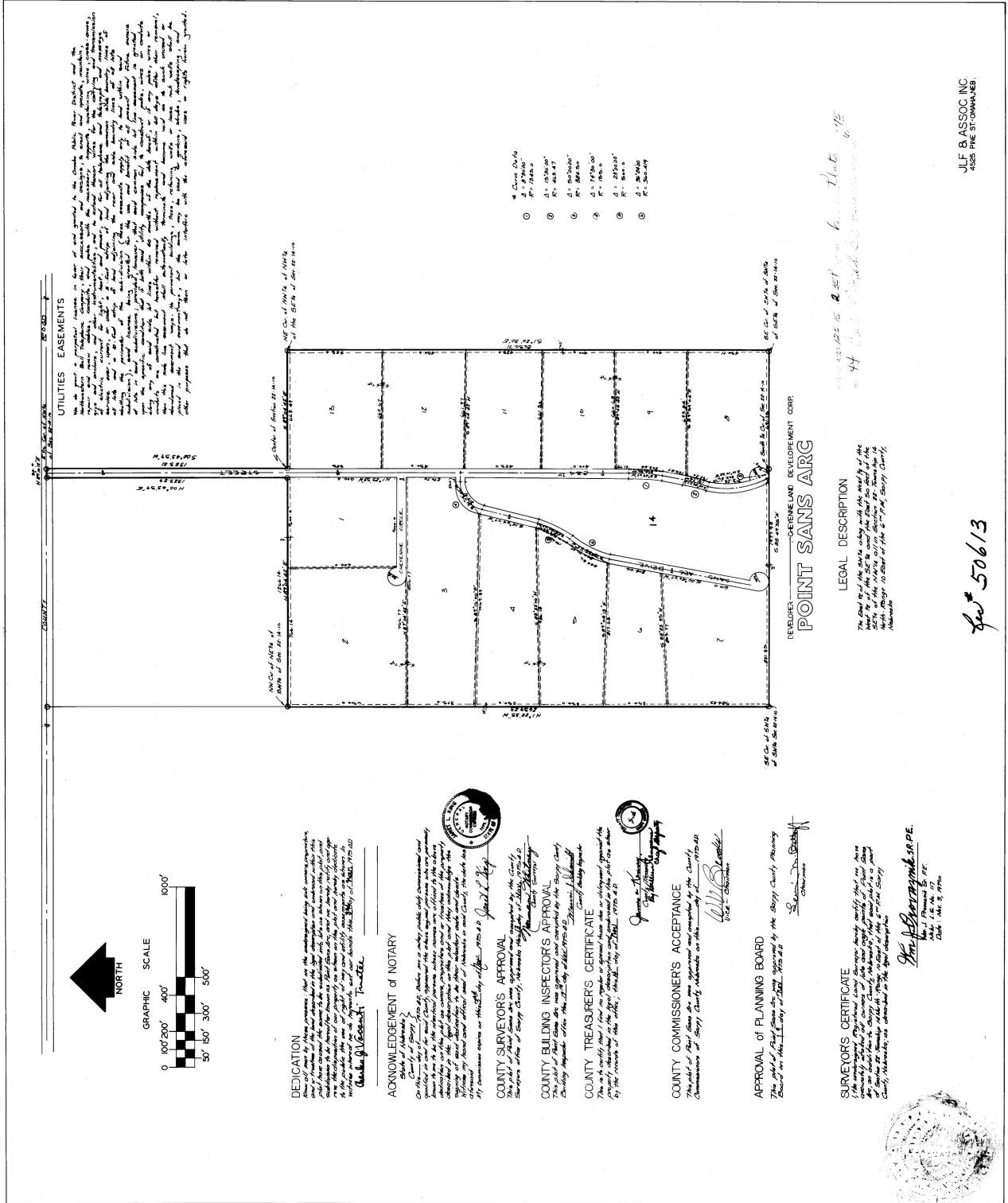
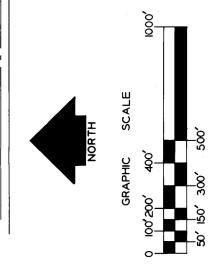


44



UTILITIES EASEMENTS

Reference is made to the Ordinance, Book 10, Page 10, of the City of St. Louis, Missouri, which provides for the establishment of utility easements for the purpose of the installation, maintenance and repair of utility lines. The easements shown on this plan are for the purpose of the installation, maintenance and repair of utility lines for the use of the City of St. Louis, Missouri, and are subject to the provisions of the Ordinance mentioned above.



- ① Curve Data
- ② R = 150.00'
- ③ Δ = 125.00'
- ④ R = 100.00'
- ⑤ Δ = 100.00'
- ⑥ R = 100.00'
- ⑦ Δ = 100.00'
- ⑧ R = 100.00'
- ⑨ Δ = 100.00'
- ⑩ R = 100.00'
- ⑪ Δ = 100.00'
- ⑫ R = 100.00'
- ⑬ Δ = 100.00'
- ⑭ R = 100.00'
- ⑮ Δ = 100.00'

DEVELOPER'S LEGAL DESCRIPTION

POINT SANS ARC

The land is of the State of Missouri, being the land shown on the plat of the City of St. Louis, Missouri, and is subject to the provisions of the Ordinance mentioned above.

50613

JLF & ASSOC INC
4535 PINE ST. - MANAGER

DEDICATION

The undersigned, being the authorized legal representative of the City of St. Louis, Missouri, do hereby dedicate to the public use of the City of St. Louis, Missouri, the land shown on this plan for the purpose of the installation, maintenance and repair of utility lines for the use of the City of St. Louis, Missouri, and is subject to the provisions of the Ordinance mentioned above.

ACKNOWLEDGEMENT OF NOTARY

Notary Public for the State of Missouri

COUNTY SURVEYORS APPROVAL

The undersigned, being the authorized legal representative of the County of St. Louis, Missouri, do hereby approve the dedication of the land shown on this plan for the purpose of the installation, maintenance and repair of utility lines for the use of the City of St. Louis, Missouri, and is subject to the provisions of the Ordinance mentioned above.

COUNTY BUILDING INSPECTORS APPROVAL

The undersigned, being the authorized legal representative of the County of St. Louis, Missouri, do hereby approve the dedication of the land shown on this plan for the purpose of the installation, maintenance and repair of utility lines for the use of the City of St. Louis, Missouri, and is subject to the provisions of the Ordinance mentioned above.

COUNTY TREASURER'S CERTIFICATE

The undersigned, being the authorized legal representative of the County of St. Louis, Missouri, do hereby certify that the land shown on this plan has been dedicated to the public use of the City of St. Louis, Missouri, and is subject to the provisions of the Ordinance mentioned above.

COUNTY COMMISSIONERS ACCEPTANCE

The undersigned, being the authorized legal representative of the County of St. Louis, Missouri, do hereby accept the dedication of the land shown on this plan for the purpose of the installation, maintenance and repair of utility lines for the use of the City of St. Louis, Missouri, and is subject to the provisions of the Ordinance mentioned above.

APPROVAL OF PLANNING BOARD

The undersigned, being the authorized legal representative of the Planning Board of the City of St. Louis, Missouri, do hereby approve the dedication of the land shown on this plan for the purpose of the installation, maintenance and repair of utility lines for the use of the City of St. Louis, Missouri, and is subject to the provisions of the Ordinance mentioned above.

SURVEYOR'S CERTIFICATE

The undersigned, being the authorized legal representative of the Surveyor of the City of St. Louis, Missouri, do hereby certify that the land shown on this plan has been dedicated to the public use of the City of St. Louis, Missouri, and is subject to the provisions of the Ordinance mentioned above.

