

ONSITE WASTEWATER PLAN
PIONEER LAKE
LOTS 47 THROUGH 58, INCLUSIVE
 AND PART OF SECTION 7, TOWNSHIP 14 NORTH, RANGE 8 EAST OF THE 6TH P.M.,
 AND PART OF SECTION 12, TOWNSHIP 14 NORTH, RANGE 8 EAST OF THE 6TH P.M.,
 ALL IN DODGE COUNTY, NEBRASKA

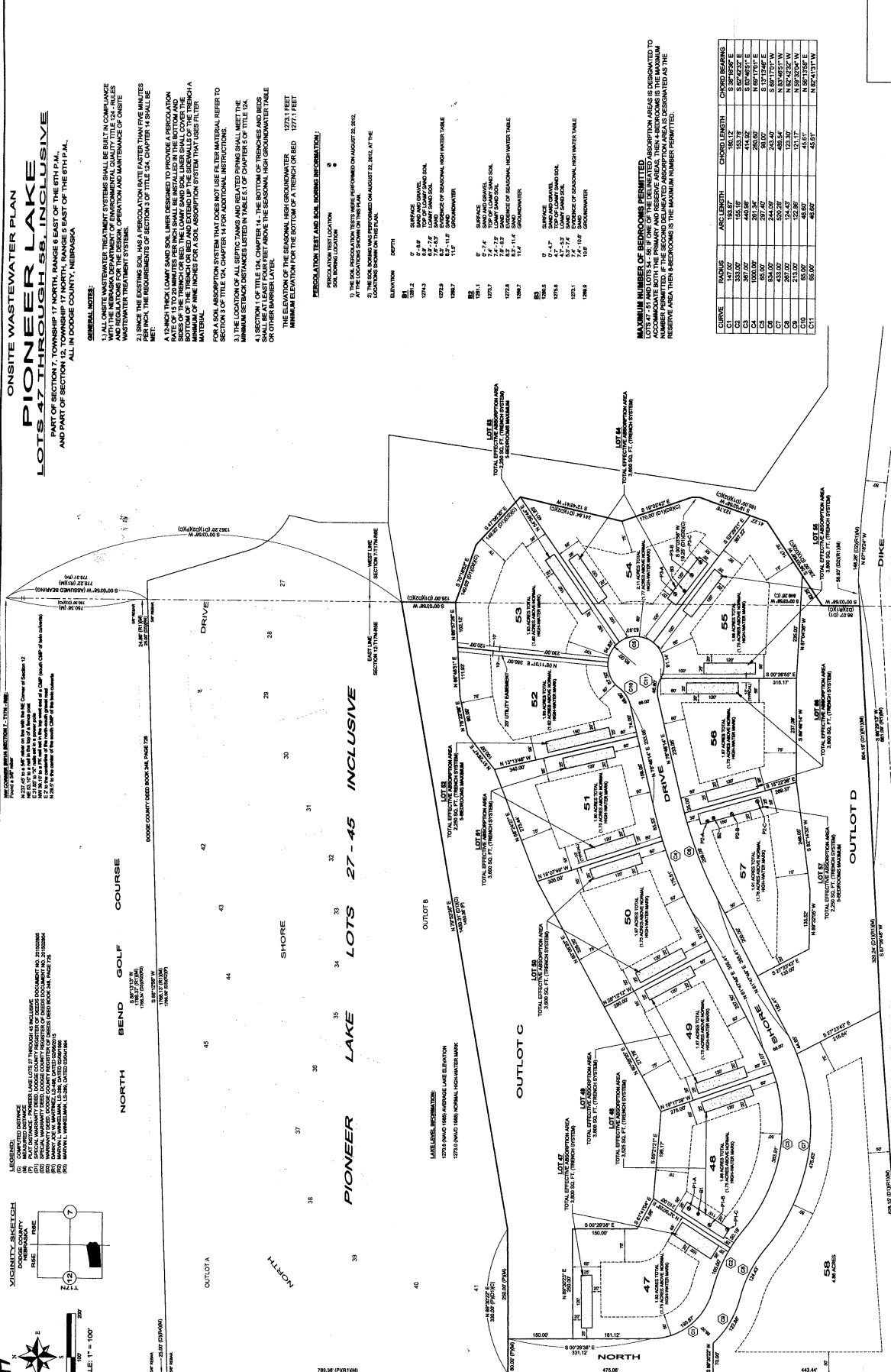
GENERAL NOTE:
 ALL ONSITE WASTEWATER TREATMENT SYSTEMS SHALL BE BUILT IN COMPLIANCE WITH THE DODGE COUNTY HEALTH DEPARTMENT ORDINANCE NO. 201000004 AND REGULATIONS FOR THE DESIGN, OPERATION AND MAINTENANCE OF ONSITE WASTEWATER TREATMENT SYSTEMS.
 PERMITS FOR THESE SYSTEMS SHALL BE OBTAINED FROM THE DODGE COUNTY HEALTH DEPARTMENT. THE REQUIREMENTS OF SECTION 24 OF TITLE 24, CHAPTER 19, NEBRASKA STATUTES SHALL APPLY.
 A 2-INCH THICK LAMINATED SAND SOIL LAYER DESIGNED TO PROVIDE A PERCOLATION RATE OF 1.0 INCH PER HOUR SHALL BE PLACED OVER THE TRENCH OR BED. THE LOWEST SAND SOIL LAYER SHALL COVER THE ENTIRE TRENCH OR BED. THE SAND SOIL LAYER SHALL BE PLACED TO A MINIMUM OF ONE INCHES FOR A SOIL ABSORPTION SYSTEM THAT USES FILTERED MATERIAL.
 FOR A SOIL ABSORPTION SYSTEM THAT DOES NOT USE FILTERED MATERIAL, REFER TO SECTION 24 OF TITLE 24, CHAPTER 19 FOR ADDITIONAL INSTRUCTIONS.
 MINIMUM SETBACK DISTANCES LISTED IN TABLE 1.1 OF CHAPTER 19 OF TITLE 24, NEBRASKA STATUTES SHALL APPLY.
 ALL SECTIONS OF TITLE 24, CHAPTER 19, NEBRASKA STATUTES SHALL BE AT LEAST FOUR FEET ABOVE THE SEASONAL HIGH GROUNDWATER TABLE OR OTHER BARRIER LAYER.
 MINIMUM ELEVATION FOR THE BOTTOM OF A TRENCH OR BED: 1277.1 FEET

PERCOLATION TEST AND SOIL BORING INFORMATION:
 PERCOLATION TEST LOCATION: 1
 SOIL BORING LOCATION: 1
 1) THE SOIL PERCOLATION TESTS WERE PERFORMED ON AUGUST 22, 2012.
 2) THE LOCATIONS SHOWN ON THIS PLAN.
 3) THE RESULTS OF THE TESTS ARE SHOWN ON THIS PLAN.
 4) THE LOCATIONS SHOWN ON THIS PLAN.

ELEVATION	DEPTH	TEST
1277.1	0	1
1277.1	1	1
1277.1	2	1
1277.1	3	1
1277.1	4	1
1277.1	5	1
1277.1	6	1
1277.1	7	1
1277.1	8	1
1277.1	9	1
1277.1	10	1
1277.1	11	1
1277.1	12	1
1277.1	13	1
1277.1	14	1
1277.1	15	1
1277.1	16	1
1277.1	17	1
1277.1	18	1
1277.1	19	1
1277.1	20	1
1277.1	21	1
1277.1	22	1
1277.1	23	1
1277.1	24	1
1277.1	25	1
1277.1	26	1
1277.1	27	1
1277.1	28	1
1277.1	29	1
1277.1	30	1
1277.1	31	1
1277.1	32	1
1277.1	33	1
1277.1	34	1
1277.1	35	1
1277.1	36	1
1277.1	37	1
1277.1	38	1
1277.1	39	1
1277.1	40	1
1277.1	41	1
1277.1	42	1
1277.1	43	1
1277.1	44	1
1277.1	45	1
1277.1	46	1
1277.1	47	1
1277.1	48	1
1277.1	49	1
1277.1	50	1
1277.1	51	1
1277.1	52	1
1277.1	53	1
1277.1	54	1
1277.1	55	1
1277.1	56	1
1277.1	57	1
1277.1	58	1

MAXIMUM NUMBER OF BEDROOMS PERMITTED:
 LOT 47: 4 BEDROOMS
 LOT 48: 4 BEDROOMS
 LOT 49: 4 BEDROOMS
 LOT 50: 4 BEDROOMS
 LOT 51: 4 BEDROOMS
 LOT 52: 4 BEDROOMS
 LOT 53: 4 BEDROOMS
 LOT 54: 4 BEDROOMS
 LOT 55: 4 BEDROOMS
 LOT 56: 4 BEDROOMS
 LOT 57: 4 BEDROOMS
 LOT 58: 4 BEDROOMS

CURVE	RADIUS	ARC LENGTH	CHORD BEARING
C1	181.12	181.12	S 89° 12' 00" E
C2	181.12	181.12	S 89° 12' 00" E
C3	181.12	181.12	S 89° 12' 00" E
C4	181.12	181.12	S 89° 12' 00" E
C5	181.12	181.12	S 89° 12' 00" E
C6	181.12	181.12	S 89° 12' 00" E
C7	181.12	181.12	S 89° 12' 00" E
C8	181.12	181.12	S 89° 12' 00" E
C9	181.12	181.12	S 89° 12' 00" E
C10	181.12	181.12	S 89° 12' 00" E
C11	181.12	181.12	S 89° 12' 00" E



NO.	DATE	DESCRIPTION
1	12/20/12	PRELIMINARY PLAN
2	02/14/13	REVISED PLAN
3	03/14/13	REVISED PLAN
4	04/14/13	REVISED PLAN
5	05/14/13	REVISED PLAN
6	06/14/13	REVISED PLAN
7	07/14/13	REVISED PLAN
8	08/14/13	REVISED PLAN
9	09/14/13	REVISED PLAN
10	10/14/13	REVISED PLAN
11	11/14/13	REVISED PLAN
12	12/14/13	REVISED PLAN
13	01/14/14	REVISED PLAN
14	02/14/14	REVISED PLAN
15	03/14/14	REVISED PLAN
16	04/14/14	REVISED PLAN
17	05/14/14	REVISED PLAN
18	06/14/14	REVISED PLAN
19	07/14/14	REVISED PLAN
20	08/14/14	REVISED PLAN
21	09/14/14	REVISED PLAN
22	10/14/14	REVISED PLAN
23	11/14/14	REVISED PLAN
24	12/14/14	REVISED PLAN
25	01/14/15	REVISED PLAN
26	02/14/15	REVISED PLAN
27	03/14/15	REVISED PLAN
28	04/14/15	REVISED PLAN
29	05/14/15	REVISED PLAN
30	06/14/15	REVISED PLAN
31	07/14/15	REVISED PLAN
32	08/14/15	REVISED PLAN
33	09/14/15	REVISED PLAN
34	10/14/15	REVISED PLAN
35	11/14/15	REVISED PLAN
36	12/14/15	REVISED PLAN
37	01/14/16	REVISED PLAN
38	02/14/16	REVISED PLAN
39	03/14/16	REVISED PLAN
40	04/14/16	REVISED PLAN
41	05/14/16	REVISED PLAN
42	06/14/16	REVISED PLAN
43	07/14/16	REVISED PLAN
44	08/14/16	REVISED PLAN
45	09/14/16	REVISED PLAN
46	10/14/16	REVISED PLAN
47	11/14/16	REVISED PLAN
48	12/14/16	REVISED PLAN
49	01/14/17	REVISED PLAN
50	02/14/17	REVISED PLAN
51	03/14/17	REVISED PLAN
52	04/14/17	REVISED PLAN
53	05/14/17	REVISED PLAN
54	06/14/17	REVISED PLAN
55	07/14/17	REVISED PLAN
56	08/14/17	REVISED PLAN
57	09/14/17	REVISED PLAN
58	10/14/17	REVISED PLAN
59	11/14/17	REVISED PLAN
60	12/14/17	REVISED PLAN
61	01/14/18	REVISED PLAN
62	02/14/18	REVISED PLAN
63	03/14/18	REVISED PLAN
64	04/14/18	REVISED PLAN
65	05/14/18	REVISED PLAN
66	06/14/18	REVISED PLAN
67	07/14/18	REVISED PLAN
68	08/14/18	REVISED PLAN
69	09/14/18	REVISED PLAN
70	10/14/18	REVISED PLAN
71	11/14/18	REVISED PLAN
72	12/14/18	REVISED PLAN
73	01/14/19	REVISED PLAN
74	02/14/19	REVISED PLAN
75	03/14/19	REVISED PLAN
76	04/14/19	REVISED PLAN
77	05/14/19	REVISED PLAN
78	06/14/19	REVISED PLAN
79	07/14/19	REVISED PLAN
80	08/14/19	REVISED PLAN
81	09/14/19	REVISED PLAN
82	10/14/19	REVISED PLAN
83	11/14/19	REVISED PLAN
84	12/14/19	REVISED PLAN
85	01/14/20	REVISED PLAN
86	02/14/20	REVISED PLAN
87	03/14/20	REVISED PLAN
88	04/14/20	REVISED PLAN
89	05/14/20	REVISED PLAN
90	06/14/20	REVISED PLAN
91	07/14/20	REVISED PLAN
92	08/14/20	REVISED PLAN
93	09/14/20	REVISED PLAN
94	10/14/20	REVISED PLAN
95	11/14/20	REVISED PLAN
96	12/14/20	REVISED PLAN
97	01/14/21	REVISED PLAN
98	02/14/21	REVISED PLAN
99	03/14/21	REVISED PLAN
100	04/14/21	REVISED PLAN