

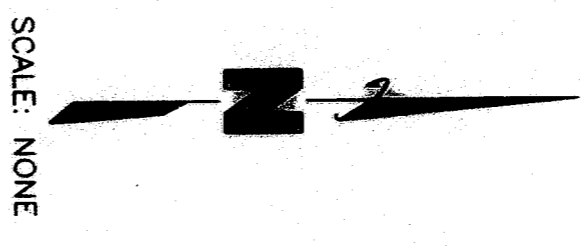
SHEET 4 OF 7

SHEET 3 OF 7

SHEET 2 OF 7

SHEET 5 OF 7

SHEET 6 OF 7



PINE LAKE HEIGHTS 1ST ADDITION

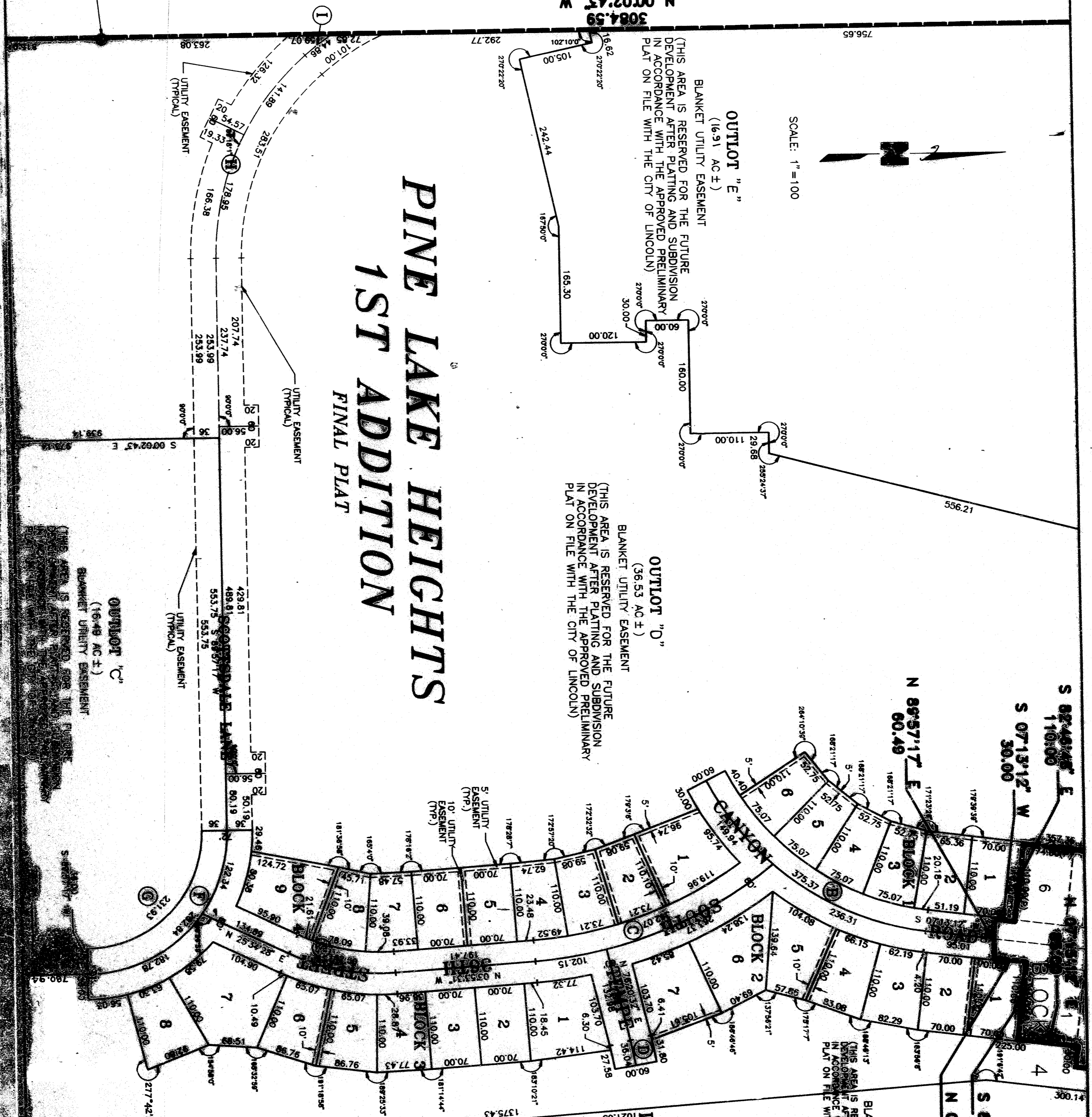
FINAL PLAT
COVER SHEET

- INDEX OF SHEETS
- SHEET 1 OF 7: COVER SHEET
 - SHEET 2 OF 7: PLAT
 - SHEET 3 OF 7: PLAT
 - SHEET 4 OF 7: PLAT
 - SHEET 5 OF 7: PLAT
 - SHEET 6 OF 7: PLAT
 - SHEET 7 OF 7: DEDICATION
NOTARY BLOCK
APPROVAL AND
ACCEPTANCE
SURVEYORS CERTIFICATE

SHEET 1 OF 7

20172-1

CENTER OF SEC.
19-T9N-R7E



3084.59
N 00°22'45" W

OUTLOT "E"
(16.91 AC ±)
BLANKET UTILITY EASEMENT
(THIS AREA IS RESERVED FOR THE FUTURE DEVELOPMENT AFTER PLATTING AND SUBDIVISION IN ACCORDANCE WITH THE APPROVED PRELIMINARY PLAT ON FILE WITH THE CITY OF LINCOLN)

OUTLOT "D"
(36.53 AC ±)
BLANKET UTILITY EASEMENT
(THIS AREA IS RESERVED FOR THE FUTURE DEVELOPMENT AFTER PLATTING AND SUBDIVISION IN ACCORDANCE WITH THE APPROVED PRELIMINARY PLAT ON FILE WITH THE CITY OF LINCOLN)

OUTLOT "C"
(16.49 AC ±)
BLANKET UTILITY EASEMENT
(THIS AREA IS RESERVED FOR THE FUTURE DEVELOPMENT AFTER PLATTING AND SUBDIVISION IN ACCORDANCE WITH THE APPROVED PRELIMINARY PLAT ON FILE WITH THE CITY OF LINCOLN)

OUTLOT "A"
(30.77 AC ±)
BLANKET UTILITY EASEMENT
(THIS AREA IS RESERVED FOR THE FUTURE DEVELOPMENT AFTER PLATTING AND SUBDIVISION IN ACCORDANCE WITH THE APPROVED PRELIMINARY PLAT ON FILE WITH THE CITY OF LINCOLN)

OUTLOT "B"
(32.68 AC ±)
BLANKET UTILITY EASEMENT
(THIS AREA IS RESERVED FOR THE FUTURE DEVELOPMENT AFTER PLATTING AND SUBDIVISION IN ACCORDANCE WITH THE APPROVED PRELIMINARY PLAT ON FILE WITH THE CITY OF LINCOLN)

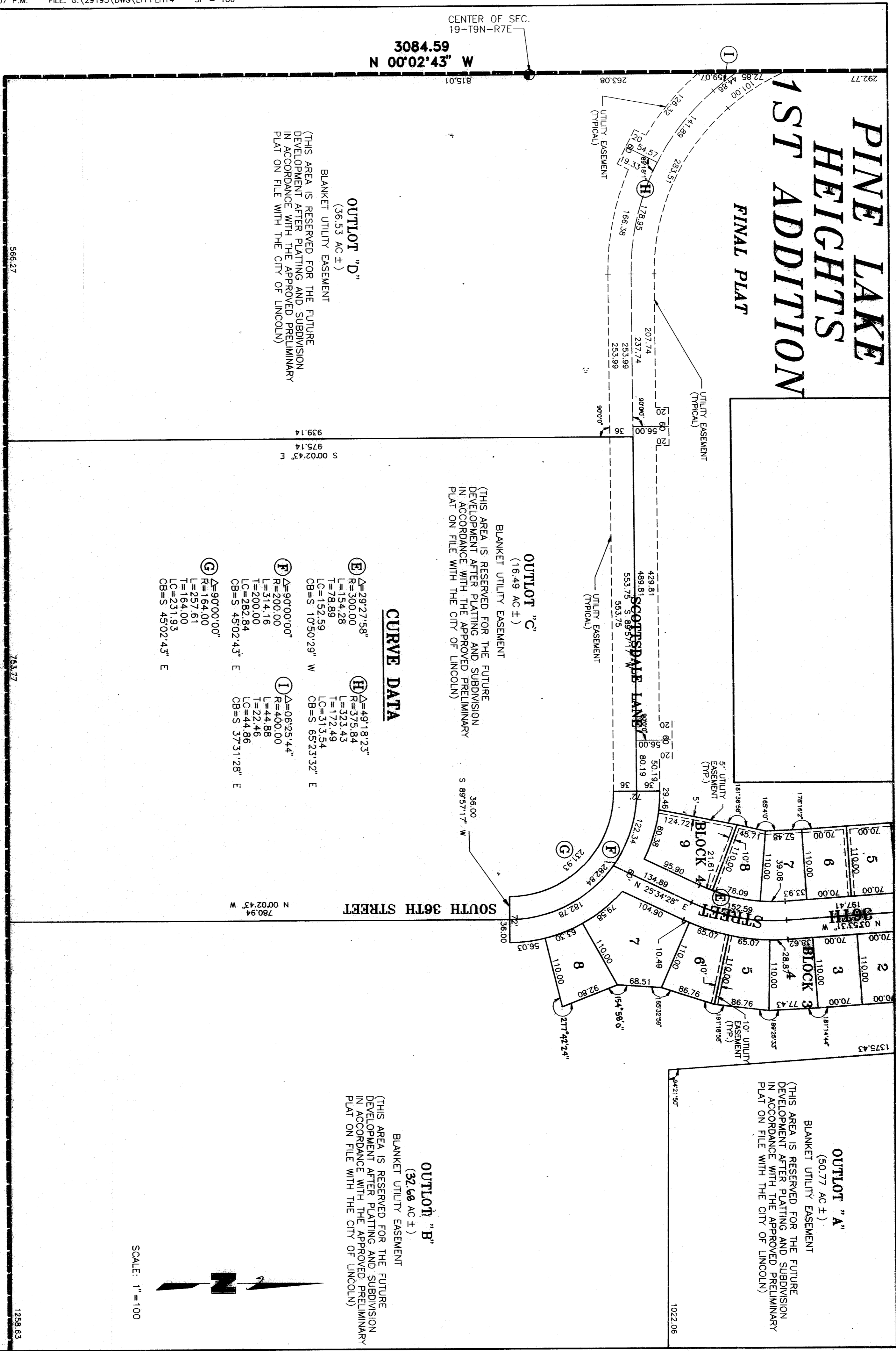
CURVE DATA

B Δ=55°58'00" R=400.00 L=390.72 T=212.53 LC=375.37 CB=S 35°12'12" W	F Δ=90°00'00" R=200.00 L=314.16 T=200.00 LC=282.84 CB=S 45°02'43" E
C Δ=35°07'20" R=500.00 L=567.80 T=189.88 LC=362.07 CB=N 21°27'10" W	G Δ=90°00'00" R=164.00 L=257.61 T=164.00 LC=231.93 CB=S 45°02'43" E
D Δ=04°07'52" R=500.00 L=36.05 T=18.03 LC=36.04 CB=N 78°24'28" E	H Δ=49°18'23" R=375.84 L=323.43 T=172.49 LC=313.54 CB=S 65°23'32" E
E Δ=29°27'58" R=300.00 L=154.28 T=78.89 LC=152.59 CB=S 10°50'29" W	I Δ=06°25'44" R=400.00 L=44.88 T=22.46 LC=44.86 CB=S 37°31'28" E

LANE

PINE LAKE HEIGHTS 1ST ADDITION

FINAL PLAT



CENTER OF SEC.
19-T9N-R7E
3084.59
N 00°02'43" W

OUTLOT "D"
(36.53 AC ±)
BLANKET UTILITY EASEMENT
(THIS AREA IS RESERVED FOR THE FUTURE DEVELOPMENT AFTER PLATTING AND SUBDIVISION IN ACCORDANCE WITH THE APPROVED PRELIMINARY PLAT ON FILE WITH THE CITY OF LINCOLN)

OUTLOT "C"
(16.49 AC ±)
BLANKET UTILITY EASEMENT
(THIS AREA IS RESERVED FOR THE FUTURE DEVELOPMENT AFTER PLATTING AND SUBDIVISION IN ACCORDANCE WITH THE APPROVED PRELIMINARY PLAT ON FILE WITH THE CITY OF LINCOLN)

CURVE DATA

- (E)** Δ=29°27'58" R=500.00 L=154.28 T=78.89 LC=152.59 CB=S 10°50'29" W
- (F)** Δ=90°00'00" R=200.00 L=314.16 T=200.00 LC=282.84 CB=S 45°02'43" E
- (G)** Δ=90°00'00" R=164.00 L=257.61 T=164.00 LC=231.93 CB=S 45°02'43" E
- (H)** Δ=49°18'23" R=575.84 L=323.43 T=172.49 LC=313.54 CB=S 65°23'32" E
- (I)** Δ=06°25'44" R=400.00 L=44.88 T=22.46 LC=44.86 CB=S 37°31'28" E

OUTLOT "B"
(32.68 AC ±)
BLANKET UTILITY EASEMENT
(THIS AREA IS RESERVED FOR THE FUTURE DEVELOPMENT AFTER PLATTING AND SUBDIVISION IN ACCORDANCE WITH THE APPROVED PRELIMINARY PLAT ON FILE WITH THE CITY OF LINCOLN)

OUTLOT "A"
(50.77 AC ±)
BLANKET UTILITY EASEMENT
(THIS AREA IS RESERVED FOR THE FUTURE DEVELOPMENT AFTER PLATTING AND SUBDIVISION IN ACCORDANCE WITH THE APPROVED PRELIMINARY PLAT ON FILE WITH THE CITY OF LINCOLN)



SCALE: 1" = 100

2578.67
N 89°36'14" W

SHEET 4 OF 7

566.27

753.27

1258.63

PINE LAKE HEIGHTS 1ST ADDITION FINAL PLAT

PINE LAKE ROAD

NORTHEAST CORNER
SEC. 19-19N-R7E

STREET

40TH

S 01°05'01" W
384.81
384.81
26.0492
S 00°00'00" E
3.0000

SOUTH

S 00°00'00" E
1393.16
91.3661

SHEET 5 OF 7

LOT 12 I.T.
(11.01 AC ±)

S 89°31'41" E
795.94
795.94

S 00°28'19" W
890.00
890.00

S 89°31'41" E
50'

OUTLOT "A"
(50.77 AC ±)
BLANKET UTILITY EASEMENT
(THIS AREA IS RESERVED FOR THE FUTURE
DEVELOPMENT AFTER PLATTING AND SUBDIVISION
IN ACCORDANCE WITH THE APPROVED PRELIMINARY
PLAT ON FILE WITH THE CITY OF LINCOLN)

SCALE: 1"=100'

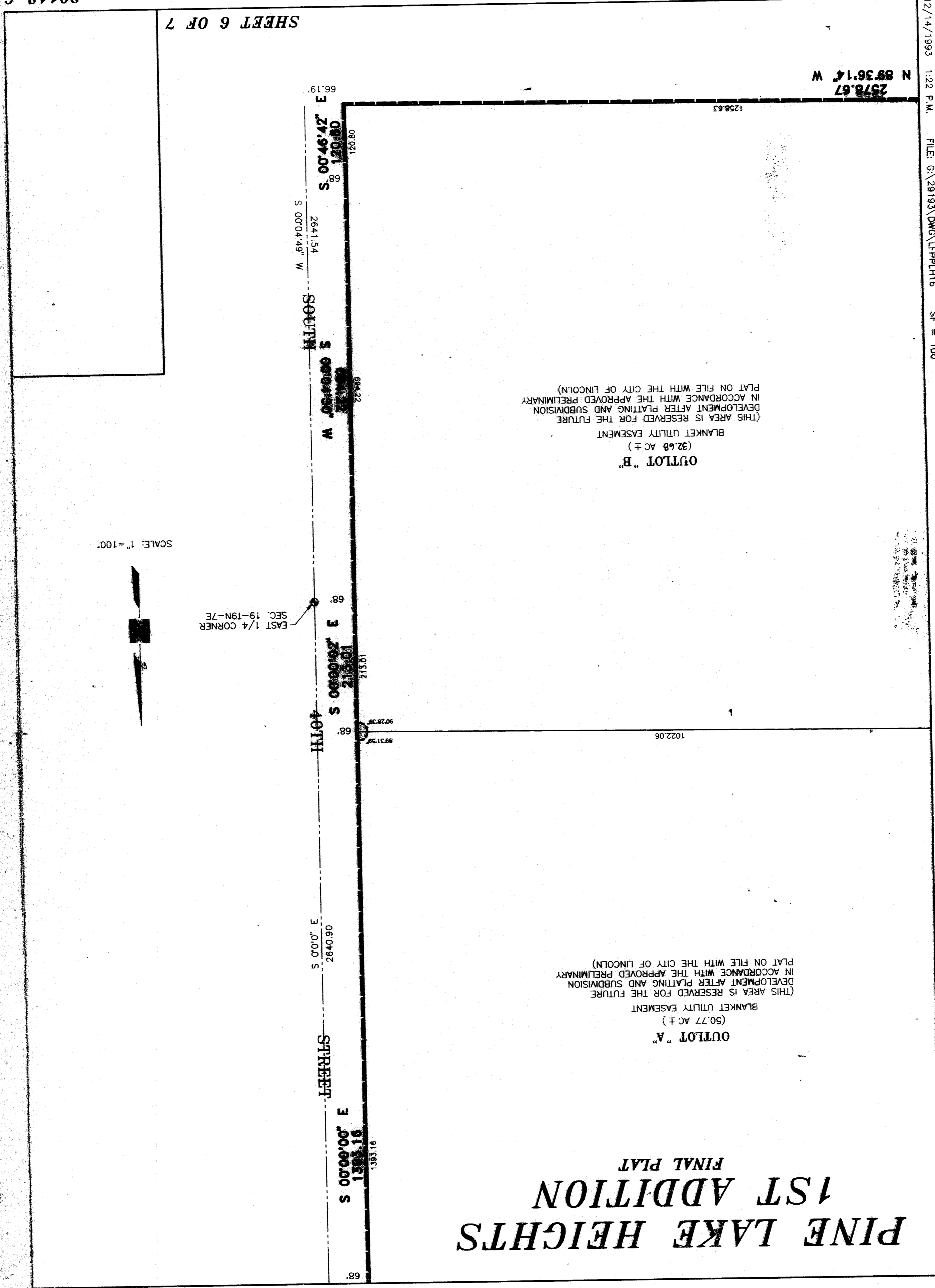


SHEET 6 OF 7

PINE LAKE HEIGHTS 1ST ADDITION FINAL PLAT

OUTLOT "A"
(50.77 AC ±)
BLANKET UTILITY EASEMENT
(THIS AREA IS RESERVED FOR THE FUTURE
DEVELOPMENT AFTER PLATTING AND SUBDIVISION
IN ACCORDANCE WITH THE APPROVED PRELIMINARY
PLAT ON FILE WITH THE CITY OF LINCOLN)

OUTLOT "B"
(32.68 AC ±)
BLANKET UTILITY EASEMENT
(THIS AREA IS RESERVED FOR THE FUTURE
DEVELOPMENT AFTER PLATTING AND SUBDIVISION
IN ACCORDANCE WITH THE APPROVED PRELIMINARY
PLAT ON FILE WITH THE CITY OF LINCOLN)



SCALE: 1"=100'



EAST 1/4 CORNER
SEC. 19-19N-7E

66.19' E
S 00°46'42" E 120.80'
2641.54 S 00°04'49" W
894.22 W 00°40'00" S
1031.2' E 00°00'00" S
9078.39' S 88°31'58"
26.0492' S 0.0000' E
91.5861' E 00°00'00" S
91.5861'

1022.06'

1258.63'

2578.67' W
N 89°36'14" W

I HEREBY CERTIFY THAT I HAVE CAUSED TO BE SURVEYED THE SUBDIVISION TO BE KNOWN AS PINE LAKE HEIGHTS 1ST ADDITION, A SUBDIVISION COMPOSED OF LOTS 14, 15, 16, 17, 18, 19, 20, 21, 22, 23, 24, 25, 26, 27, 28, 29, 30, 31, 32, 33, 34, 35, 36, 37, 38, 39, 40, 41, 42, 43, 44, 45, 46, 47, 48, 49, 50, 51, 52, 53, 54, 55, 56, 57, 58, 59, 60, 61, 62, 63, 64, 65, 66, 67, 68, 69, 70, 71, 72, 73, 74, 75, 76, 77, 78, 79, 80, 81, 82, 83, 84, 85, 86, 87, 88, 89, 90, 91, 92, 93, 94, 95, 96, 97, 98, 99, 100, 101, 102, 103, 104, 105, 106, 107, 108, 109, 110, 111, 112, 113, 114, 115, 116, 117, 118, 119, 120, 121, 122, 123, 124, 125, 126, 127, 128, 129, 130, 131, 132, 133, 134, 135, 136, 137, 138, 139, 140, 141, 142, 143, 144, 145, 146, 147, 148, 149, 150, 151, 152, 153, 154, 155, 156, 157, 158, 159, 160, 161, 162, 163, 164, 165, 166, 167, 168, 169, 170, 171, 172, 173, 174, 175, 176, 177, 178, 179, 180, 181, 182, 183, 184, 185, 186, 187, 188, 189, 190, 191, 192, 193, 194, 195, 196, 197, 198, 199, 200, 201, 202, 203, 204, 205, 206, 207, 208, 209, 210, 211, 212, 213, 214, 215, 216, 217, 218, 219, 220, 221, 222, 223, 224, 225, 226, 227, 228, 229, 230, 231, 232, 233, 234, 235, 236, 237, 238, 239, 240, 241, 242, 243, 244, 245, 246, 247, 248, 249, 250, 251, 252, 253, 254, 255, 256, 257, 258, 259, 260, 261, 262, 263, 264, 265, 266, 267, 268, 269, 270, 271, 272, 273, 274, 275, 276, 277, 278, 279, 280, 281, 282, 283, 284, 285, 286, 287, 288, 289, 290, 291, 292, 293, 294, 295, 296, 297, 298, 299, 300, 301, 302, 303, 304, 305, 306, 307, 308, 309, 310, 311, 312, 313, 314, 315, 316, 317, 318, 319, 320, 321, 322, 323, 324, 325, 326, 327, 328, 329, 330, 331, 332, 333, 334, 335, 336, 337, 338, 339, 340, 341, 342, 343, 344, 345, 346, 347, 348, 349, 350, 351, 352, 353, 354, 355, 356, 357, 358, 359, 360, 361, 362, 363, 364, 365, 366, 367, 368, 369, 370, 371, 372, 373, 374, 375, 376, 377, 378, 379, 380, 381, 382, 383, 384, 385, 386, 387, 388, 389, 390, 391, 392, 393, 394, 395, 396, 397, 398, 399, 400, 401, 402, 403, 404, 405, 406, 407, 408, 409, 410, 411, 412, 413, 414, 415, 416, 417, 418, 419, 420, 421, 422, 423, 424, 425, 426, 427, 428, 429, 430, 431, 432, 433, 434, 435, 436, 437, 438, 439, 440, 441, 442, 443, 444, 445, 446, 447, 448, 449, 450, 451, 452, 453, 454, 455, 456, 457, 458, 459, 460, 461, 462, 463, 464, 465, 466, 467, 468, 469, 470, 471, 472, 473, 474, 475, 476, 477, 478, 479, 480, 481, 482, 483, 484, 485, 486, 487, 488, 489, 490, 491, 492, 493, 494, 495, 496, 497, 498, 499, 500, 501, 502, 503, 504, 505, 506, 507, 508, 509, 510, 511, 512, 513, 514, 515, 516, 517, 518, 519, 520, 521, 522, 523, 524, 525, 526, 527, 528, 529, 530, 531, 532, 533, 534, 535, 536, 537, 538, 539, 540, 541, 542, 543, 544, 545, 546, 547, 548, 549, 550, 551, 552, 553, 554, 555, 556, 557, 558, 559, 560, 561, 562, 563, 564, 565, 566, 567, 568, 569, 570, 571, 572, 573, 574, 575, 576, 577, 578, 579, 580, 581, 582, 583, 584, 585, 586, 587, 588, 589, 590, 591, 592, 593, 594, 595, 596, 597, 598, 599, 600, 601, 602, 603, 604, 605, 606, 607, 608, 609, 610, 611, 612, 613, 614, 615, 616, 617, 618, 619, 620, 621, 622, 623, 624, 625, 626, 627, 628, 629, 630, 631, 632, 633, 634, 635, 636, 637, 638, 639, 640, 641, 642, 643, 644, 645, 646, 647, 648, 649, 650, 651, 652, 653, 654, 655, 656, 657, 658, 659, 660, 661, 662, 663, 664, 665, 666, 667, 668, 669, 670, 671, 672, 673, 674, 675, 676, 677, 678, 679, 680, 681, 682, 683, 684, 685, 686, 687, 688, 689, 690, 691, 692, 693, 694, 695, 696, 697, 698, 699, 700, 701, 702, 703, 704, 705, 706, 707, 708, 709, 710, 711, 712, 713, 714, 715, 716, 717, 718, 719, 720, 721, 722, 723, 724, 725, 726, 727, 728, 729, 730, 731, 732, 733, 734, 735, 736, 737, 738, 739, 740, 741, 742, 743, 744, 745, 746, 747, 748, 749, 750, 751, 752, 753, 754, 755, 756, 757, 758, 759, 760, 761, 762, 763, 764, 765, 766, 767, 768, 769, 770, 771, 772, 773, 774, 775, 776, 777, 778, 779, 780, 781, 782, 783, 784, 785, 786, 787, 788, 789, 790, 791, 792, 793, 794, 795, 796, 797, 798, 799, 800, 801, 802, 803, 804, 805, 806, 807, 808, 809, 810, 811, 812, 813, 814, 815, 816, 817, 818, 819, 820, 821, 822, 823, 824, 825, 826, 827, 828, 829, 830, 831, 832, 833, 834, 835, 836, 837, 838, 839, 840, 841, 842, 843, 844, 845, 846, 847, 848, 849, 850, 851, 852, 853, 854, 855, 856, 857, 858, 859, 860, 861, 862, 863, 864, 865, 866, 867, 868, 869, 870, 871, 872, 873, 874, 875, 876, 877, 878, 879, 880, 881, 882, 883, 884, 885, 886, 887, 888, 889, 890, 891, 892, 893, 894, 895, 896, 897, 898, 899, 900, 901, 902, 903, 904, 905, 906, 907, 908, 909, 910, 911, 912, 913, 914, 915, 916, 917, 918, 919, 920, 921, 922, 923, 924, 925, 926, 927, 928, 929, 930, 931, 932, 933, 934, 935, 936, 937, 938, 939, 940, 941, 942, 943, 944, 945, 946, 947, 948, 949, 950, 951, 952, 953, 954, 955, 956, 957, 958, 959, 960, 961, 962, 963, 964, 965, 966, 967, 968, 969, 970, 971, 972, 973, 974, 975, 976, 977, 978, 979, 980, 981, 982, 983, 984, 985, 986, 987, 988, 989, 990, 991, 992, 993, 994, 995, 996, 997, 998, 999, 1000.

PINE LAKE HEIGHTS 1ST ADDITION

FINAL PLAT

STAKING BOND TO INSURE THE PLACING OF PERMANENT MONUMENTS AT ALL SUCH LOT CORNERS PRIOR TO THE CONSTRUCTION ON OR CONVEYANCE OF ANY LOT SHOWN ON THIS FINAL PLAT. ALL DIMENSIONS ARE CHORD MEASUREMENTS UNLESS OTHERWISE SHOWN, AND ARE IN FEET AND DECIMALS OF A FOOT.

DEC 20 1993

THOMAS BRUGGEMAN
OLSON ASSOCIATES
611 NBC CENTER
LINCOLN, NE 68508

DEDICATION

THE FOREGOING PLAT IS KNOWN AS PINE LAKE HEIGHTS 1ST ADDITION, A SUBDIVISION COMPOSED OF LOTS 14, 15, 16, 17, 18, 19, 20, 21, 22, 23, 24, 25, 26, 27, 28, 29, 30, 31, 32, 33, 34, 35, 36, 37, 38, 39, 40, 41, 42, 43, 44, 45, 46, 47, 48, 49, 50, 51, 52, 53, 54, 55, 56, 57, 58, 59, 60, 61, 62, 63, 64, 65, 66, 67, 68, 69, 70, 71, 72, 73, 74, 75, 76, 77, 78, 79, 80, 81, 82, 83, 84, 85, 86, 87, 88, 89, 90, 91, 92, 93, 94, 95, 96, 97, 98, 99, 100, 101, 102, 103, 104, 105, 106, 107, 108, 109, 110, 111, 112, 113, 114, 115, 116, 117, 118, 119, 120, 121, 122, 123, 124, 125, 126, 127, 128, 129, 130, 131, 132, 133, 134, 135, 136, 137, 138, 139, 140, 141, 142, 143, 144, 145, 146, 147, 148, 149, 150, 151, 152, 153, 154, 155, 156, 157, 158, 159, 160, 161, 162, 163, 164, 165, 166, 167, 168, 169, 170, 171, 172, 173, 174, 175, 176, 177, 178, 179, 180, 181, 182, 183, 184, 185, 186, 187, 188, 189, 190, 191, 192, 193, 194, 195, 196, 197, 198, 199, 200, 201, 202, 203, 204, 205, 206, 207, 208, 209, 210, 211, 212, 213, 214, 215, 216, 217, 218, 219, 220, 221, 222, 223, 224, 225, 226, 227, 228, 229, 230, 231, 232, 233, 234, 235, 236, 237, 238, 239, 240, 241, 242, 243, 244, 245, 246, 247, 248, 249, 250, 251, 252, 253, 254, 255, 256, 257, 258, 259, 260, 261, 262, 263, 264, 265, 266, 267, 268, 269, 270, 271, 272, 273, 274, 275, 276, 277, 278, 279, 280, 281, 282, 283, 284, 285, 286, 287, 288, 289, 290, 291, 292, 293, 294, 295, 296, 297, 298, 299, 300, 301, 302, 303, 304, 305, 306, 307, 308, 309, 310, 311, 312, 313, 314, 315, 316, 317, 318, 319, 320, 321, 322, 323, 324, 325, 326, 327, 328, 329, 330, 331, 332, 333, 334, 335, 336, 337, 338, 339, 340, 341, 342, 343, 344, 345, 346, 347, 348, 349, 350, 351, 352, 353, 354, 355, 356, 357, 358, 359, 360, 361, 362, 363, 364, 365, 366, 367, 368, 369, 370, 371, 372, 373, 374, 375, 376, 377, 378, 379, 380, 381, 382, 383, 384, 385, 386, 387, 388, 389, 390, 391, 392, 393, 394, 395, 396, 397, 398, 399, 400, 401, 402, 403, 404, 405, 406, 407, 408, 409, 410, 411, 412, 413, 414, 415, 416, 417, 418, 419, 420, 421, 422, 423, 424, 425, 426, 427, 428, 429, 430, 431, 432, 433, 434, 435, 436, 437, 438, 439, 440, 441, 442, 443, 444, 445, 446, 447, 448, 449, 450, 451, 452, 453, 454, 455, 456, 457, 458, 459, 460, 461, 462, 463, 464, 465, 466, 467, 468, 469, 470, 471, 472, 473, 474, 475, 476, 477, 478, 479, 480, 481, 482, 483, 484, 485, 486, 487, 488, 489, 490, 491, 492, 493, 494, 495, 496, 497, 498, 499, 500, 501, 502, 503, 504, 505, 506, 507, 508, 509, 510, 511, 512, 513, 514, 515, 516, 517, 518, 519, 520, 521, 522, 523, 524, 525, 526, 527, 528, 529, 530, 531, 532, 533, 534, 535, 536, 537, 538, 539, 540, 541, 542, 543, 544, 545, 546, 547, 548, 549, 550, 551, 552, 553, 554, 555, 556, 557, 558, 559, 560, 561, 562, 563, 564, 565, 566, 567, 568, 569, 570, 571, 572, 573, 574, 575, 576, 577, 578, 579, 580, 581, 582, 583, 584, 585, 586, 587, 588, 589, 590, 591, 592, 593, 594, 595, 596, 597, 598, 599, 600, 601, 602, 603, 604, 605, 606, 607, 608, 609, 610, 611, 612, 613, 614, 615, 616, 617, 618, 619, 620, 621, 622, 623, 624, 625, 626, 627, 628, 629, 630, 631, 632, 633, 634, 635, 636, 637, 638, 639, 640, 641, 642, 643, 644, 645, 646, 647, 648, 649, 650, 651, 652, 653, 654, 655, 656, 657, 658, 659, 660, 661, 662, 663, 664, 665, 666, 667, 668, 669, 670, 671, 672, 673, 674, 675, 676, 677, 678, 679, 680, 681, 682, 683, 684, 685, 686, 687, 688, 689, 690, 691, 692, 693, 694, 695, 696, 697, 698, 699, 700, 701, 702, 703, 704, 705, 706, 707, 708, 709, 710, 711, 712, 713, 714, 715, 716, 717, 718, 719, 720, 721, 722, 723, 724, 725, 726, 727, 728, 729, 730, 731, 732, 733, 734, 735, 736, 737, 738, 739, 740, 741, 742, 743, 744, 745, 746, 747, 748, 749, 750, 751, 752, 753, 754, 755, 756, 757, 758, 759, 760, 761, 762, 763, 764, 765, 766, 767, 768, 769, 770, 771, 772, 773, 774, 775, 776, 777, 778, 779, 780, 781, 782, 783, 784, 785, 786, 787, 788, 789, 790, 791, 792, 793, 794, 795, 796, 797, 798, 799, 800, 801, 802, 803, 804, 805, 806, 807, 808, 809, 810, 811, 812, 813, 814, 815, 816, 817, 818, 819, 820, 821, 822, 823, 824, 825, 826, 827, 828, 829, 830, 831, 832, 833, 834, 835, 836, 837, 838, 839, 840, 841, 842, 843, 844, 845, 846, 847, 848, 849, 850, 851, 852, 853, 854, 855, 856, 857, 858, 859, 860, 861, 862, 863, 864, 865, 866, 867, 868, 869, 870, 871, 872, 873, 874, 875, 876, 877, 878, 879, 880, 881, 882, 883, 884, 885, 886, 887, 888, 889, 890, 891, 892, 893, 894, 895, 896, 897, 898, 899, 900, 901, 902, 903, 904, 905, 906, 907, 908, 909, 910, 911, 912, 913, 914, 915, 916, 917, 918, 919, 920, 921, 922, 923, 924, 925, 926, 927, 928, 929, 930, 931, 932, 933, 934, 935, 936, 937, 938, 939, 940, 941, 942, 943, 944, 945, 946, 947, 948, 949, 950, 951, 952, 953, 954, 955, 956, 957, 958, 959, 960, 961, 962, 963, 964, 965, 966, 967, 968, 969, 970, 971, 972, 973, 974, 975, 976, 977, 978, 979, 980, 981, 982, 983, 984, 985, 986, 987, 988, 989, 990, 991, 992, 993, 994, 995, 996, 997, 998, 999, 1000.

THE CONSTRUCTION OR LOCATION OF ANY BUILDING OR STRUCTURE, EXCLUDING FENCES, OVER, UPON, OR UNDER ANY EASEMENT SHOWN THEREON SHALL BE PROHIBITED.

THE CONSTRUCTION OR LOCATION OF ANY FENCE OR OTHER IMPROVEMENT WHICH OBSTRUCTS DRAINAGE SHALL BE PROHIBITED OVER, UPON, OR UNDER ANY STORM DRAIN EASEMENT OR DRAINAGE EASEMENT SHOWN THEREON.

THE CITY OF LINCOLN, ITS SUCCESSORS OR ASSIGNS ARE HEREBY HELD HARMLESS FOR THE COST OF REPLACEMENT OR DAMAGE TO ANY IMPROVEMENT OR VEGETATION OVER, UPON, OR UNDER ANY EASEMENT SHOWN THEREON.

THE STREETS SHOWN ARE HEREBY DEDICATED TO THE PUBLIC. THE ACCESS EASEMENTS AND THE PEDESTRIAN WAY EASEMENTS SHOWN SHALL BE USED FOR PUBLIC ACCESS AND THE PUBLIC IS HEREBY GRANTED THE RIGHT OF SUCH USE.

THE RIGHT OF DIRECT VEHICULAR ACCESS TO PINE LAKE ROAD FROM LOTS ABUTTING SAID STREET IS HEREBY RELINQUISHED.

WITNESS MY HAND THIS 17th DAY OF December 1993.

Thomas E. White, General Partner in Pine Lake Heights Limited Partnership, a Nebraska Limited Partnership and President of Development for Ridge Development Company

Gerald L. Schleich, General Partner in Pine Lake Heights Limited Partnership, a Nebraska Limited Partnership and President of Construction for Ridge Development Company

John C. Brager, General Partner in Pine Lake Heights Limited Partnership, a Nebraska Limited Partnership and President of Construction for Ridge Development Company

Sally W. Strong, President, Lincoln County School District 001

PLANNING COMMISSION APPROVAL

THE LINCOLN-LANCASTER COUNTY PLANNING COMMISSION HAS APPROVED THIS FINAL PLAT AND ACCEPTED THE OFFER OF DEDICATION ON THIS 13th DAY OF January, 1994 BY RESOLUTION NO. 00130.

ATTEST: *Janet Adams* Chair

ACKNOWLEDGEMENT OF NOTARY

STATE OF NEBRASKA
COUNTY OF LANCASTER

ON THIS 27th DAY OF January 1994, BEFORE ME, THE UNDERSIGNED, A NOTARY PUBLIC, DULY COMMISSIONED, QUALIFIED IN AND FOR SAID COUNTY AND STATE, PERSONALLY CAME SALLY WYONG WHO IS PERSONALLY KNOWN TO ME TO BE THE IDENTICAL PERSON WHOSE NAME IS AFFIXED TO THE DEDICATION OF THIS PLAT AS PRESIDENT OF LANCASTER COUNTY SCHOOL DISTRICT 001, AND SHE ACKNOWLEDGES THE EXECUTION THEREOF TO BE HER VOLUNTARY ACT AND DEED OF SAID SCHOOL DISTRICT.

MY COMMISSION EXPIRES ON THE 29th DAY OF December 1995.

Sally W. Strong
NOTARY PUBLIC

ACKNOWLEDGEMENT OF NOTARY

STATE OF NEBRASKA
COUNTY OF LANCASTER

ON THIS 20th DAY OF December 1993, BEFORE ME, THE UNDERSIGNED, A NOTARY PUBLIC, DULY COMMISSIONED, QUALIFIED IN AND FOR SAID COUNTY AND STATE, PERSONALLY CAME JOHN C. BRAGER WHO IS PERSONALLY KNOWN TO ME TO BE THE IDENTICAL PERSON WHOSE NAME IS AFFIXED TO THE DEDICATION OF THIS PLAT AS GENERAL PARTNER OF PINE LAKE HEIGHTS LIMITED PARTNERSHIP, A NEBRASKA LIMITED PARTNERSHIP, AND PRESIDENT OF DEVELOPMENT FOR RIDGE DEVELOPMENT COMPANY, AND HE ACKNOWLEDGES THE EXECUTION THEREOF TO BE HIS VOLUNTARY ACT AND DEED OF SAID PARTNERSHIP COMPANY.

MY COMMISSION EXPIRES ON THE 26th DAY OF June 1997.

John C. Brager
NOTARY PUBLIC

ACKNOWLEDGEMENT OF NOTARY

STATE OF NEBRASKA
COUNTY OF LANCASTER

ON THIS 20th DAY OF December 1993, BEFORE ME, THE UNDERSIGNED, A NOTARY PUBLIC, DULY COMMISSIONED, QUALIFIED IN AND FOR SAID COUNTY AND STATE, PERSONALLY CAME JOHN C. BRAGER WHO IS PERSONALLY KNOWN TO ME TO BE THE IDENTICAL PERSON WHOSE NAME IS AFFIXED TO THE DEDICATION OF THIS PLAT AS GENERAL PARTNER OF PINE LAKE HEIGHTS LIMITED PARTNERSHIP, A NEBRASKA LIMITED PARTNERSHIP, AND PRESIDENT OF DEVELOPMENT FOR RIDGE DEVELOPMENT COMPANY, AND HE ACKNOWLEDGES THE EXECUTION THEREOF TO BE HIS VOLUNTARY ACT AND DEED OF SAID PARTNERSHIP COMPANY.

MY COMMISSION EXPIRES ON THE 26th DAY OF June 1997.

John C. Brager
NOTARY PUBLIC

ACKNOWLEDGEMENT OF NOTARY

STATE OF NEBRASKA
COUNTY OF LANCASTER

ON THIS 17th DAY OF December 1993, BEFORE ME, THE UNDERSIGNED, A NOTARY PUBLIC, DULY COMMISSIONED, QUALIFIED IN AND FOR SAID COUNTY AND STATE, PERSONALLY CAME GERALD L. SCHLEICH WHO IS PERSONALLY KNOWN TO ME TO BE THE IDENTICAL PERSON WHOSE NAME IS AFFIXED TO THE DEDICATION OF THIS PLAT AS GENERAL PARTNER OF PINE LAKE HEIGHTS LIMITED PARTNERSHIP, A NEBRASKA LIMITED PARTNERSHIP, AND PRESIDENT OF DEVELOPMENT FOR RIDGE DEVELOPMENT COMPANY, AND HE ACKNOWLEDGES THE EXECUTION THEREOF TO BE HIS VOLUNTARY ACT AND DEED OF SAID CORPORATION.

MY COMMISSION EXPIRES ON THE 21st DAY OF October 1996.

Gerald L. Schleich
NOTARY PUBLIC

LIEN HOLDER CONSENT AND SUBORDINATION

THE UNDERSIGNED HOLDER OF THAT CERTAIN LIEN AGAINST THE REAL PROPERTY DESCRIBED IN THE PLAT KNOWN AS OUTLOT "B" PINE LAKE HEIGHTS ADDITION, LOTS 14, 15 AND LOT 17 OF IRREGULAR TRACTS IN THE EAST HALF OF SECTION 19, TOWNSHIP 9 NORTH, RANGE 7 EAST OF THE 6TH P.M., LINCOLN LANCASTER COUNTY, NEBRASKA, (HEREINAFTER "PLAT"), SAID LIEN BEING RECORDED IN THE OFFICE OF THE REGISTER OF DEEDS OF LANCASTER COUNTY, NEBRASKA, AS INSTRUMENT NO. 992-50387 AND INSTRUMENT NO. 993-34377 (HEREINAFTER "LIEN"), DOES HEREBY CONSENT TO THE DEDICATION OF AND SUBORDINATE THE LIEN TO ANY UTILITY (SEWER, WATER, ELECTRIC, CABLE TV, TELEPHONE, NATURAL GAS) EASEMENTS, OR STREETS OR ROADS, PEDESTRIAN WAY EASEMENTS, AND ACCESS EASEMENTS AND RELINQUISHMENTS OF ACCESS, DEDICATED TO THE PUBLIC, ALL AS SHOWN ON THE PLAT, BUT NOT OTHERWISE. THE UNDERSIGNED CONFIRMS THAT IT IS THE HOLDER OF THE LIEN AND HAS NOT ASSIGNED THE LIEN TO ANY OTHER PERSON.

HAWELock