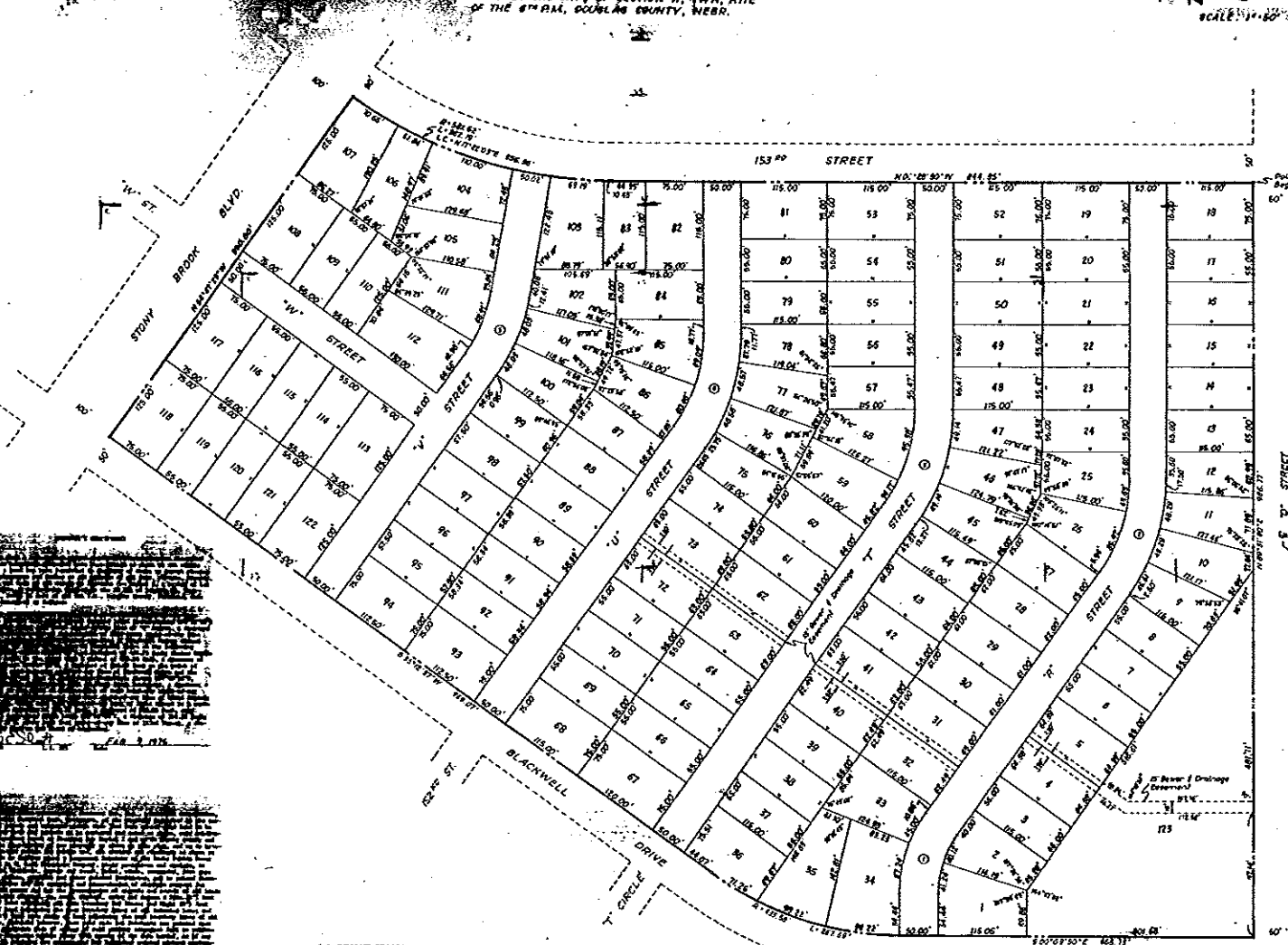


PHEASANT RUN REPLAT I

LOCATED IN THE NW 1/4 OF SECTION 10, T4N, R10E
OF THE 6TH BLK, DOUGLAS COUNTY, NEBR.

SCALE: 1" = 40'

- 1. 1/4 AC.
- 2. 1/2 AC.
- 3. 3/4 AC.
- 4. 1 AC.
- 5. 1 1/4 AC.
- 6. 1 1/2 AC.
- 7. 1 3/4 AC.
- 8. 2 AC.
- 9. 2 1/4 AC.
- 10. 2 1/2 AC.
- 11. 2 3/4 AC.
- 12. 3 AC.
- 13. 3 1/4 AC.
- 14. 3 1/2 AC.
- 15. 3 3/4 AC.
- 16. 4 AC.
- 17. 4 1/4 AC.
- 18. 4 1/2 AC.
- 19. 4 3/4 AC.
- 20. 5 AC.



FINAL PLAT
PHEASANT RUN REPLAT I
DOUGLAS COUNTY, NEBR.

5 N 8

HIST NO MORE INSTRUMENTS FOR THIS PROPERTY

| ADDITION | PHEASANT RUN REP | 1 | ** VACATED ** | AMOUNT | CHARACTER | BK. PG. |
|---------------------------|-------------------|---|---------------|-----------------|-----------|---------|
| LOT 000053 | BLOCK 00000 | | | | | |
| TYPE | NUMBER FILED | | | | | |
| DEEDNF | 1976010677 760709 | | DATED BK. PG. | 000000 1548 243 | | |
| 1. *PHEASANT RUN REPLAT I | | | 2. *TO PUBLIC | | | |

BOOK DEEDNF 1976 010677

READY FOR UPDATE

BOOK 1548 PAGE 243 THRU

REF BK/PG OR DOC#

TYPE

DATE RECORDED 760709 INSTRUMENT DATE 000000 AMOUNT

1ST PARTY

PHEASANT RUN REPLAT I

2ND PARTY

TO PUBLIC

CHARACTER PLAT

ADDITION PHEASANT RUN REP 1

FLD BOOK 70 NUMBER 30374

LOT 000001 0 BLOCK 00000 0

SECTION

TOWNSHIP RANGE

QRT-QRT

REMARKS L1-123 (REP L299 PHEASANT RUN)

TERM DATE

RELEASE DATE

LIEN NUMBER

ACTION

ENTERED BY SR

VERIFIED BY

IMAGING DOCUMENT 1D

PF2-MORE NAMES PF3-DELIVERY BOOK PF4-ALL NAMES PF5-ALL LOTS