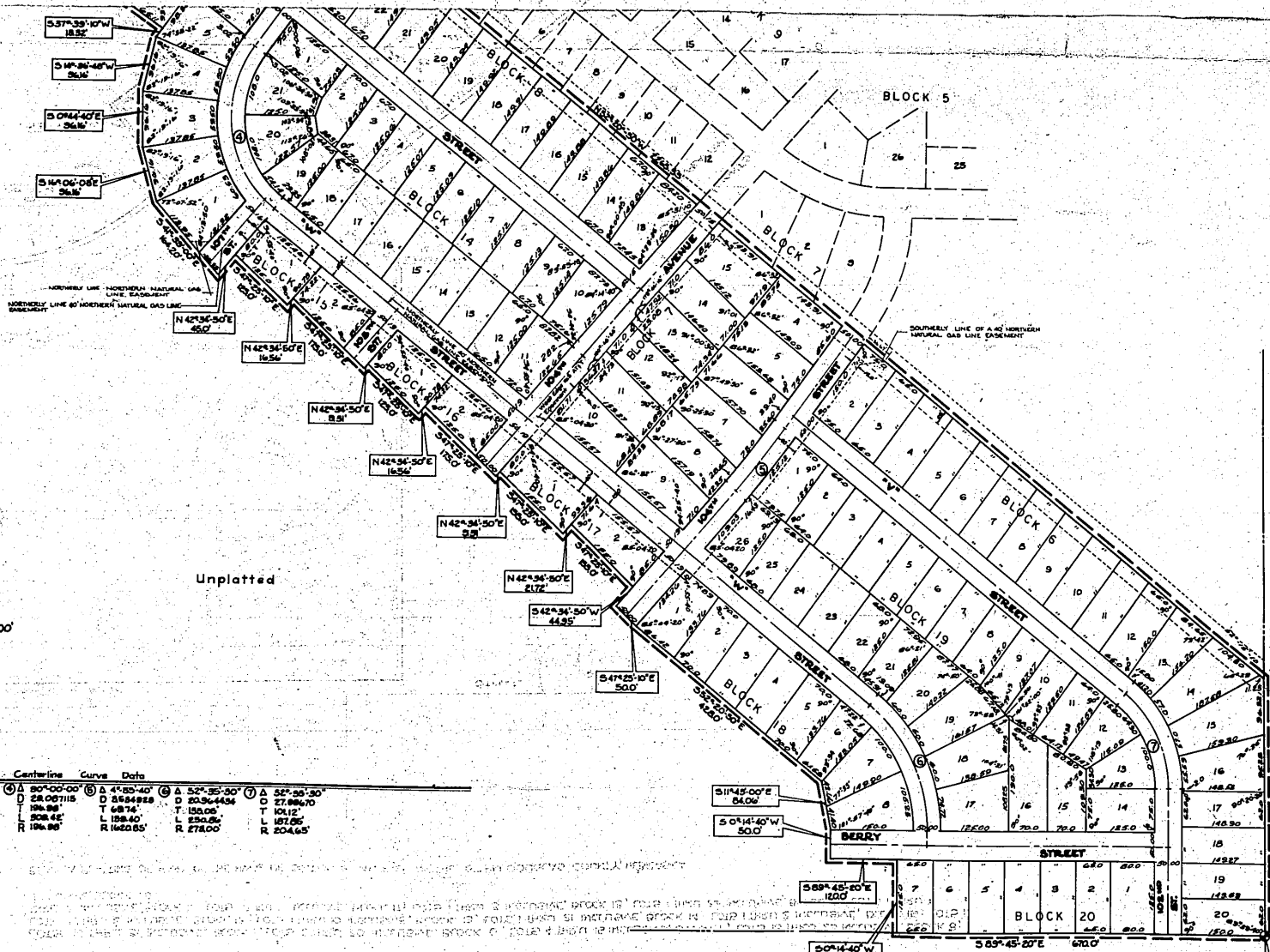


Scale 1"=100'

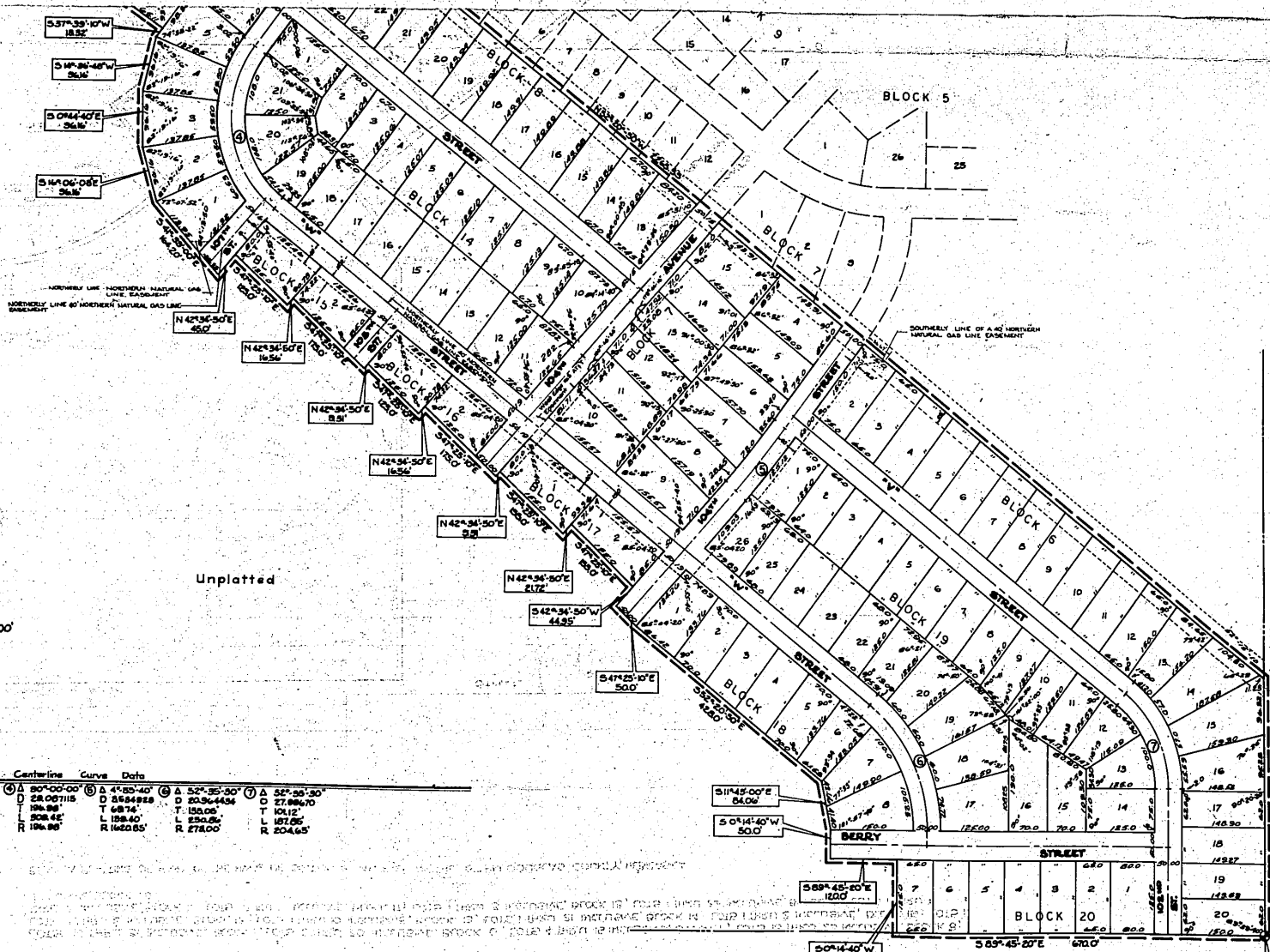


Centerline		Curve Data	
① Δ 52° 20' 50"	Δ 89° 46' 30"	④ Δ 90° 00' 00"	⑥ Δ 4° 20' 40"
D 1916.678	D 48.65766	D 11.007627	D 28.007115
T 146.85'	T 125.00'	T 177.44'	T 196.89'
R 273.15'	R 125.49'	L 342.06'	L 196.45'
R 298.85'	R 125.49'	R 520.51'	R 196.89'
② Δ 52° 20' 50"	⑤ Δ 52° 35' 00"	⑦ Δ 52° 25' 30"	
D 1916.678	D 20.964434	D 27.99670	
T 146.85'	T 68.74'	T 101.12'	
R 273.15'	L 196.45'	L 101.00'	
R 298.85'	R 142.05'	R 274.00'	

OWN HEIGHTS

Center of Section 9
T14N R12E Of The 24
RN Douglas County
Nebraska

Scale 1"=100'



Centerline Curve Data

Station	Angle	Distance	Station	Angle	Distance	Station	Angle	Distance
1	52° 20' 50"	2316.678	6	4° 30' 40"	28.007115	11	52° 35' 00"	20.364434
2	89° 46' 30"	48.63766	7	52° 35' 00"	20.364434	12	52° 35' 00"	20.364434
3	125° 00'	125.00'	8	4° 30' 40"	28.007115	13	52° 35' 00"	20.364434
4	81° 39' 10"	11.007627	9	52° 35' 00"	20.364434	14	52° 35' 00"	20.364434
5	90° 00' 00"	28.007115	10	4° 30' 40"	28.007115	15	52° 35' 00"	20.364434

Unplatted

STREETS AND HEIGHTS

Center of Section 9
T14N R12E Of The 4th
RN Douglas County
Nebraska

APPROVAL OF CITY PLANNING BOARD

This plat of OAK HEIGHTS 2ND PLATTING was approved by the City Planning Board of the City of Omaha, Nebraska, this 11th day of April, 1968

Quinn T. Masten
Chairman, City Planning Board

APPROVAL OF OMAHA CITY COUNCIL

This plat of OAK HEIGHTS 2ND PLATTING was approved and accepted by the City Council of Omaha, Nebraska on this 30th day of April, 1968

W. Dornsey
Mayor

H. F. Jubber
President

Stanley J. ...
City Clerk

Unplatted

Note
Distances Shown On Curves Are Arc Distances Not Chord Distances

DOUGLAS COUNTY
SURVEYOR'S OFFICE
Michael Hall

TD	OAK HEIGHTS	
	SCALE DATE As Shown	DRAWN BY WRG
THOMPSON & DORNER	(2 nd Platting)	

29.

42.75

ENTERED IN NUMERICAL INDEX AND RECORDED IN THE REGISTER OF DEEDS OFFICE IN DOUGLAS COUNTY, NEBRASKA
29 DAY May 1968 AT 2:57 P.M. THOMAS J. O'CONNOR, REGISTER OF DEEDS