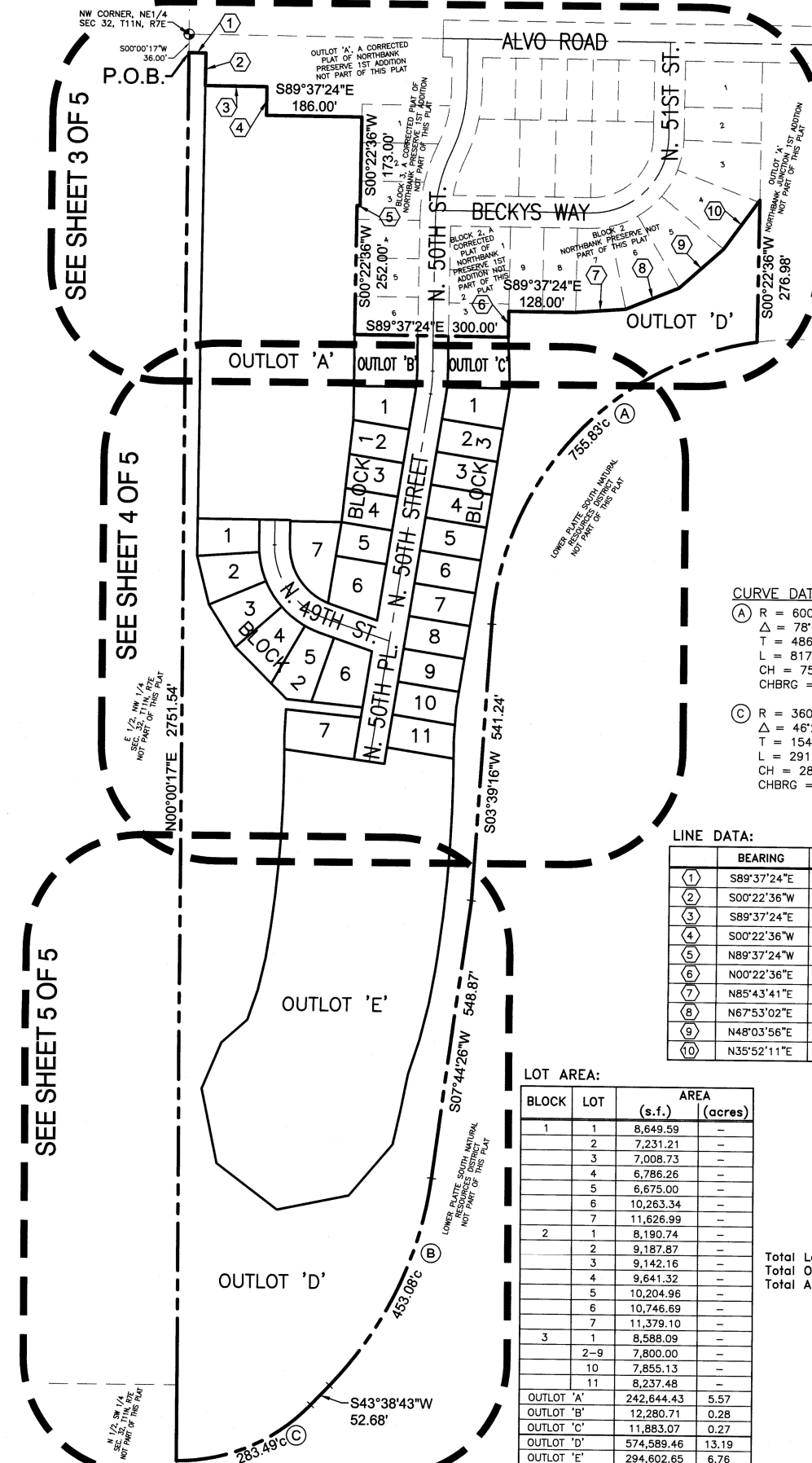


NORTHBANK PRESERVE 2ND ADDITION

FINAL PLAT BASED ON NORTHBANK JUNCTION PRELIMINARY PLAT #03004



SEE SHEET 3 OF 5

SEE SHEET 4 OF 5

SEE SHEET 5 OF 5

Section Corner Ties

NW Corner of the NE 1/4 Sec. 32-T11N-R7E
 Fnd. Alum. Cap
 N 32.69' Fnd. 5/8" Rebar
 E 31.515' Fnd. 3/8" Rebar
 S 29.50' Fnd. 5/8" Rebar
 W 34.74' Fnd. 5/8" Rebar

MINIMUM OPENING ELEVATIONS

BLOCK	LOT	ELEV(NAVD88)
1	1	1138.20
2	1 & 2	1138.30
	3-6	1138.40
	7	1138.50
3	1-3	1138.20
	4-7	1138.30
	8-10	1138.40
	11	1138.50

LOWEST FINISHED FLOOR ELEV.

BLOCK	LOT	ELEV(NAVD88)
1	1	1132.20
2	1 & 2	1132.30
	3-6	1132.40
	7	1132.50
3	1-3	1132.20
	4-7	1132.30
	8-10	1132.40
	11	1132.50

CURVE DATA:

- (A) R = 600.00'
 Δ = 78°04'47"
 T = 486.56'
 L = 817.65'
 CH = 755.83'
 CHBRG = S42°41'45"W
- (B) R = 735.00'
 Δ = 35°54'13"
 T = 238.13'
 L = 460.58'
 CH = 453.08'
 CHBRG = S25°41'32"W
- (C) R = 360.00'
 Δ = 46°22'31"
 T = 154.20'
 L = 291.38'
 CH = 283.49'
 CHBRG = S66°49'52"W

LINE DATA:

	BEARING	DISTANCE
(1)	S89°37'24"E	33.25'
(2)	S00°22'36"W	63.75'
(3)	S89°37'24"E	120.00'
(4)	S00°22'36"W	56.25'
(5)	N89°37'24"W	6.00'
(6)	N00°22'36"E	50.44'
(7)	N85°43'41"E	99.26'
(8)	N67°53'02"E	112.52'
(9)	N48°03'56"E	114.64'
(10)	N35°52'11"E	118.58'

LOT AREA:

BLOCK	LOT	AREA (s.f.)	AREA (acres)
1	1	8,649.59	-
	2	7,231.21	-
	3	7,008.73	-
	4	6,786.26	-
	5	6,675.00	-
	6	10,263.34	-
	7	11,626.99	-
2	1	8,190.74	-
	2	9,187.87	-
	3	9,142.16	-
	4	9,641.32	-
	5	10,204.96	-
	6	10,746.69	-
	7	11,379.10	-
3	1	8,588.09	-
	2-9	7,800.00	-
	10	7,855.13	-
	11	8,237.48	-
OUTLOT 'A'		242,644.43	5.57
OUTLOT 'B'		12,280.71	0.28
OUTLOT 'C'		11,883.07	0.27
OUTLOT 'D'		574,589.46	13.19
OUTLOT 'E'		294,602.65	6.76

Total Lots = 25
 Total Outlots = 5
 Total Acres = 32.61

SHEET LEGEND:

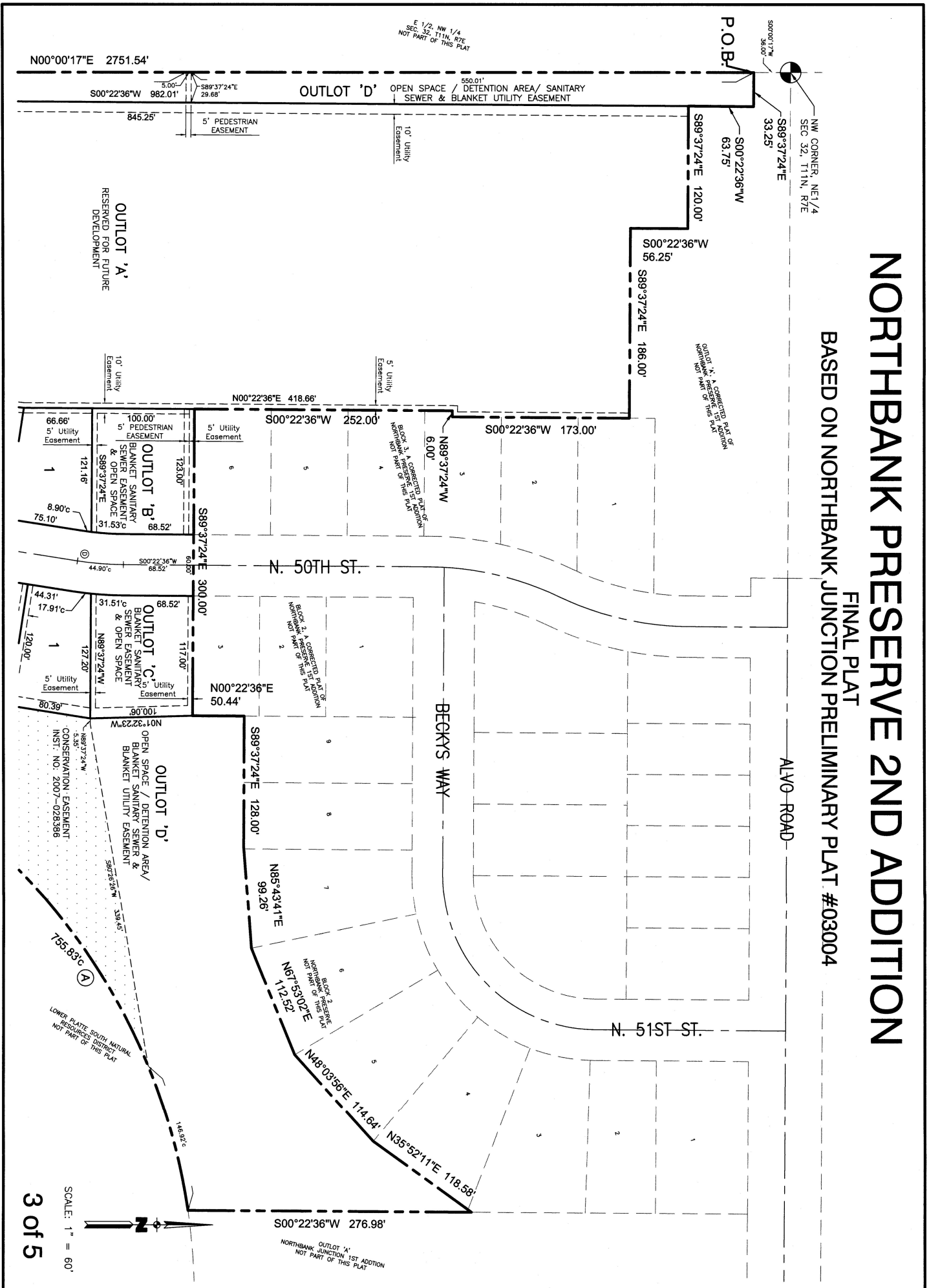
VERBIAGE PAGE	1
INDEX & DRAWING PAGE	2
DRAWING PAGE	3
DRAWING PAGE	4
DRAWING PAGE	5



SCALE: 1" = 150'

NORTHBANK PRESERVE 2ND ADDITION

FINAL PLAT
 BASED ON NORTHBANK JUNCTION PRELIMINARY PLAT #03004



SCALE: 1" = 60'
 3 of 5

OUTLOT 'A'
 RESERVED FOR FUTURE
 DEVELOPMENT

OUTLOT 'B'
 BLANKET SANITARY
 SEWER EASEMENT
 & OPEN SPACE

OUTLOT 'C'
 BLANKET SANITARY
 SEWER EASEMENT
 & OPEN SPACE

OUTLOT 'D'
 OPEN SPACE / DETENTION AREA/
 BLANKET SANITARY SEWER &
 BLANKET UTILITY EASEMENT

OUTLOT 'D' OPEN SPACE / DETENTION AREA / SANITARY
 SEWER & BLANKET UTILITY EASEMENT

OUTLOT 'A', A CORRECTED PART OF
 NORTHBANK PRESERVE 2ND ADDITION
 NOT PART OF THIS PLAT

OUTLOT 'A'
 NORTHBANK JUNCTION 1ST ADDITION
 NOT PART OF THIS PLAT

E 1/2, NW 1/4
 SEC. 32, T11N, R7E
 NOT PART OF THIS PLAT

CONSERVATION EASEMENT
 INST. NO. 2007-028388

LOWER PLATE SOUTH NATURAL
 RESOURCE DISTRICT
 NOT PART OF THIS PLAT

10' Utility
 Easement

5' Utility
 Easement

5' Utility
 Easement

5' Utility
 Easement

5' Utility
 Easement

5' Utility
 Easement

5' Utility
 Easement

5' Utility
 Easement

5' Utility
 Easement

5' Utility
 Easement

5' Utility
 Easement

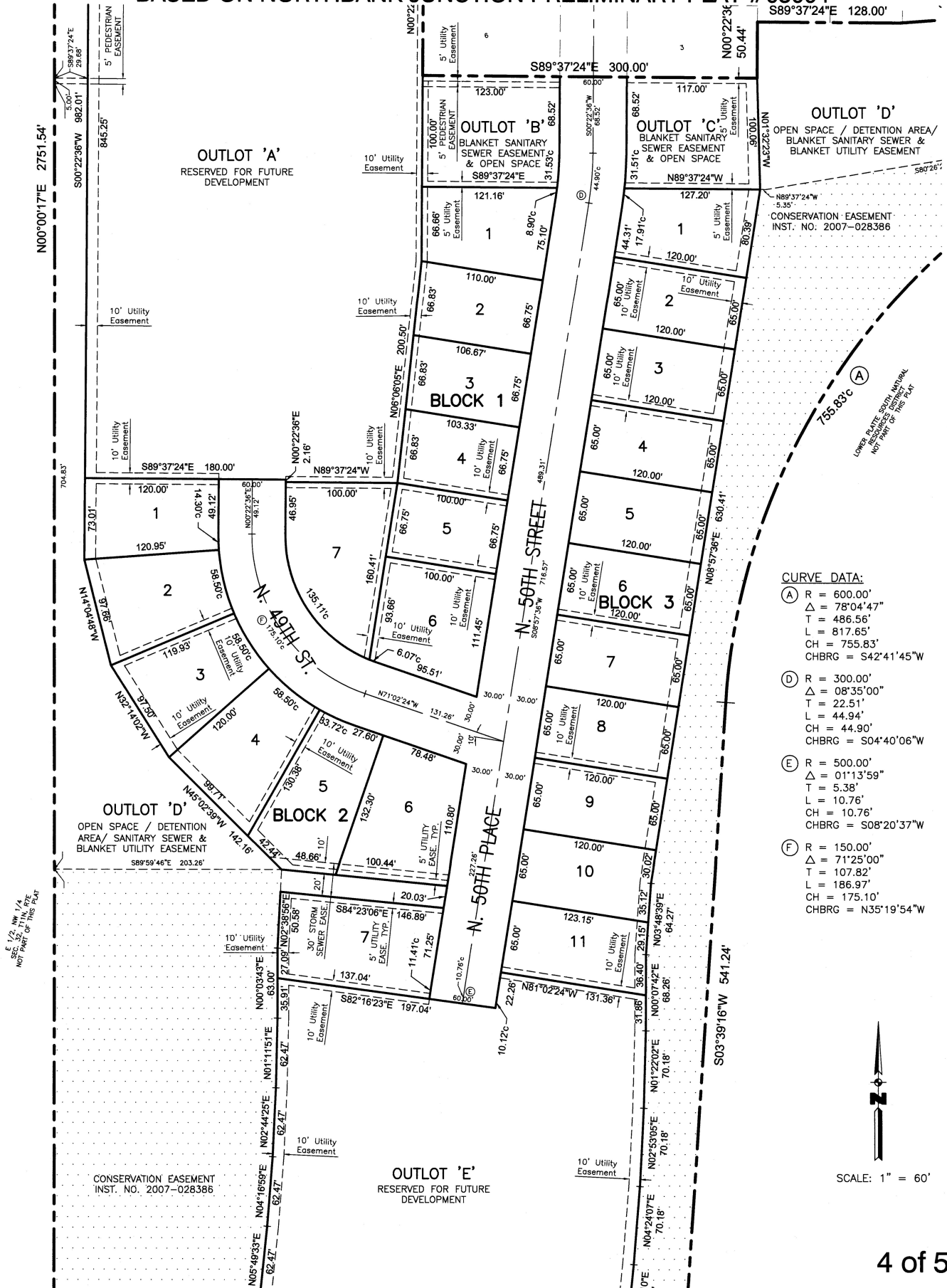
5' Utility
 Easement

5' Utility
 Easement

5' Utility
 Easement

NORTHBANK PRESERVE 2ND ADDITION

FINAL PLAT BASED ON NORTHBANK JUNCTION PRELIMINARY PLAT #03004



SCALE: 1" = 60'

