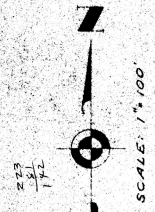


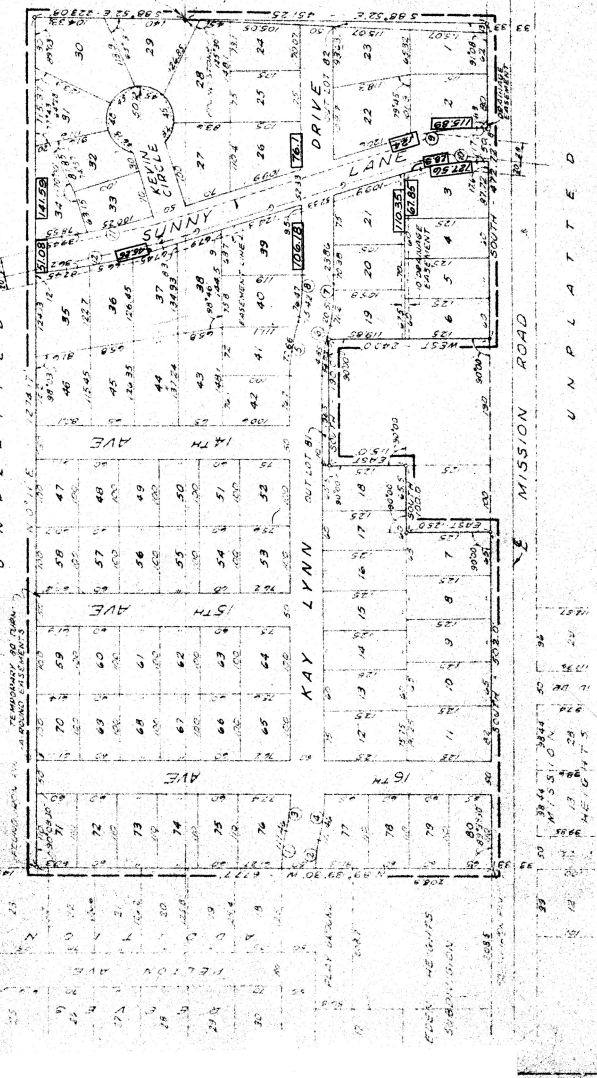
STATE OF NEBRASKA }
 SARY COUNTY }
 Filed for record }
 A. D. 1960, at 10 o'clock A. M. }
 by }
 E. H. GULLERON }
 Surveyor }
 at }
 100 }
 100 }
 100 }

MISSION VIEW

A SUBDIVISION IN THE NW 1/4, SEC. 36, T.44N. R.13E. AND THE NE 1/4, SEC. 35, T.44N. R.13E. OF THE 6TH D.M. SARY COUNTY, NEBRASKA (LOTS 1 THRU 82 INCLUSIVE)



NOTE:
 BOXED FIGURES ARE CORRECTED DIMENSIONS. INCORRECT LOT DIMENSIONS HAVE BEEN CORRECTED SHOWING AFFECTING LOTS 2, 3, 5, 21, 26, 34 AND 39. REISSUED SEPTEMBER 23, 1960



CURVE DATA

1	15° 57'	200.21'	28.618°	55.79'
2	15° 57'	160.21'	38.148°	41.81'
3	15° 57'	120.21'	47.698°	28.828°
4	15° 57'	80.21'	57.248°	15.838°
5	15° 57'	40.21'	66.798°	2.848°
6	15° 57'	0.21'	76.348°	10.158°
7	15° 57'	40.21'	85.898°	27.168°
8	15° 57'	80.21'	95.448°	44.178°
9	15° 57'	120.21'	104.998°	61.188°
10	15° 57'	160.21'	114.548°	78.198°
11	15° 57'	200.21'	124.098°	95.208°
12	15° 57'	240.21'	133.648°	112.218°
13	15° 57'	280.21'	143.198°	129.228°
14	15° 57'	320.21'	152.748°	146.238°
15	15° 57'	360.21'	162.298°	163.248°
16	15° 57'	400.21'	171.848°	180.258°
17	15° 57'	440.21'	181.398°	197.268°
18	15° 57'	480.21'	190.948°	214.278°
19	15° 57'	520.21'	200.498°	231.288°
20	15° 57'	560.21'	210.048°	248.298°
21	15° 57'	600.21'	219.598°	265.308°
22	15° 57'	640.21'	229.148°	282.318°
23	15° 57'	680.21'	238.698°	299.328°
24	15° 57'	720.21'	248.248°	316.338°
25	15° 57'	760.21'	257.798°	333.348°
26	15° 57'	800.21'	267.348°	350.358°
27	15° 57'	840.21'	276.898°	367.368°
28	15° 57'	880.21'	286.448°	384.378°
29	15° 57'	920.21'	295.998°	401.388°
30	15° 57'	960.21'	305.548°	418.398°
31	15° 57'	1000.21'	315.098°	435.408°
32	15° 57'	1040.21'	324.648°	452.418°
33	15° 57'	1080.21'	334.198°	469.428°
34	15° 57'	1120.21'	343.748°	486.438°
35	15° 57'	1160.21'	353.298°	503.448°
36	15° 57'	1200.21'	362.848°	520.458°
37	15° 57'	1240.21'	372.398°	537.468°
38	15° 57'	1280.21'	381.948°	554.478°
39	15° 57'	1320.21'	391.498°	571.488°
40	15° 57'	1360.21'	401.048°	588.498°
41	15° 57'	1400.21'	410.598°	605.508°
42	15° 57'	1440.21'	420.148°	622.518°
43	15° 57'	1480.21'	429.698°	639.528°
44	15° 57'	1520.21'	439.248°	656.538°
45	15° 57'	1560.21'	448.798°	673.548°
46	15° 57'	1600.21'	458.348°	690.558°
47	15° 57'	1640.21'	467.898°	707.568°
48	15° 57'	1680.21'	477.448°	724.578°
49	15° 57'	1720.21'	486.998°	741.588°
50	15° 57'	1760.21'	496.548°	758.598°
51	15° 57'	1800.21'	506.098°	775.608°
52	15° 57'	1840.21'	515.648°	792.618°
53	15° 57'	1880.21'	525.198°	809.628°
54	15° 57'	1920.21'	534.748°	826.638°
55	15° 57'	1960.21'	544.298°	843.648°
56	15° 57'	2000.21'	553.848°	860.658°
57	15° 57'	2040.21'	563.398°	877.668°
58	15° 57'	2080.21'	572.948°	894.678°
59	15° 57'	2120.21'	582.498°	911.688°
60	15° 57'	2160.21'	592.048°	928.698°
61	15° 57'	2200.21'	601.598°	945.708°
62	15° 57'	2240.21'	611.148°	962.718°
63	15° 57'	2280.21'	620.698°	979.728°
64	15° 57'	2320.21'	630.248°	996.738°
65	15° 57'	2360.21'	639.798°	1013.748°
66	15° 57'	2400.21'	649.348°	1030.758°
67	15° 57'	2440.21'	658.898°	1047.768°
68	15° 57'	2480.21'	668.448°	1064.778°
69	15° 57'	2520.21'	677.998°	1081.788°
70	15° 57'	2560.21'	687.548°	1098.798°
71	15° 57'	2600.21'	697.098°	1115.808°
72	15° 57'	2640.21'	706.648°	1132.818°
73	15° 57'	2680.21'	716.198°	1149.828°
74	15° 57'	2720.21'	725.748°	1166.838°
75	15° 57'	2760.21'	735.298°	1183.848°
76	15° 57'	2800.21'	744.848°	1200.858°
77	15° 57'	2840.21'	754.398°	1217.868°
78	15° 57'	2880.21'	763.948°	1234.878°
79	15° 57'	2920.21'	773.498°	1251.888°
80	15° 57'	2960.21'	783.048°	1268.898°
81	15° 57'	3000.21'	792.598°	1285.908°
82	15° 57'	3040.21'	802.148°	1302.918°

AFFIDAVIT OF SURVEYOR

STATE OF NEBRASKA }
 COUNTY OF DOUGLAS }

E. H. GULLERON, being first duly sworn on oath, states as follows:

1. He is the registered Land Surveyor who executed the Surveyor's Certificate on the Plat of Mission View, an Addition to the City of Bellevue, Sary County, Nebraska, recorded in Book 3, Page 120 of the Deed Records of Sary County, Nebraska.
2. By inadvertence and mistake, some of the lot dimensions were incorrectly shown on said recorded Plat affecting Lots 2, 3, 21, 22, 26, 34 and 39. The affiant has re-surveyed said lots and the attached Plat now correctly shows the lot dimensions of all said lots.

Further affiant sayeth not.

E. H. Gulleron
 E. H. GULLERON

SUBSCRIBED AND SWORN to before me this 27th day of September, 1960.

Notary Public
 NOTARY PUBLIC



140 A