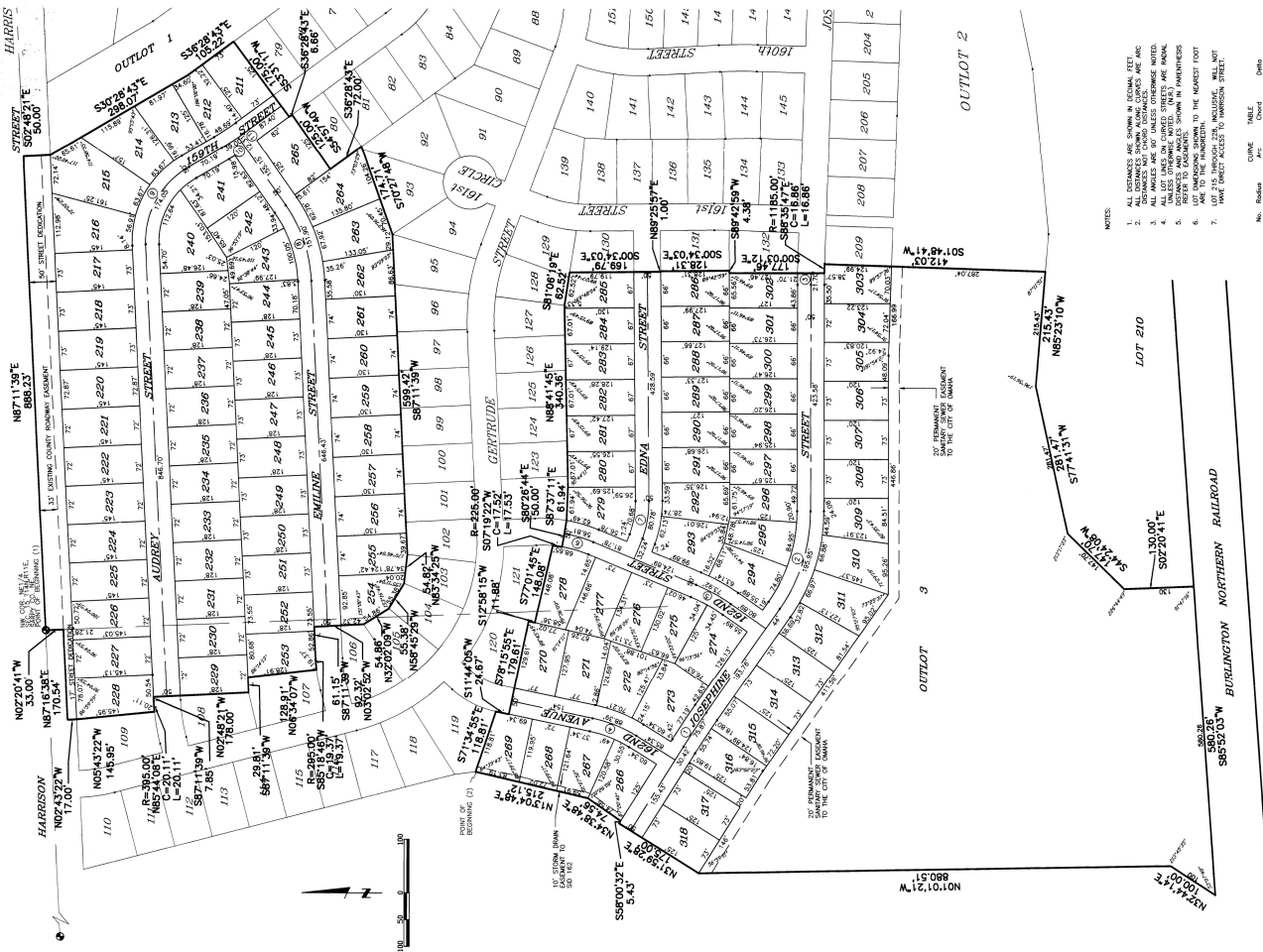


# MILLARD PARK

LOTS 211 THROUGH 318, INCLUSIVE AND OUTLOT 2C BEING A PLATING OF TAXLOT 2C IN THE NORTHEAST QUARTER AND THE NORTHWEST QUARTER OF SECTION 15, TOWNSHIP 14 NORTH, RANGE 11 EAST OF THE 6TH P.M., SARPY COUNTY, NEBRASKA



97-2013



Robert D. Powell, P.E.  
Professional Engineer  
No. 028113  
State of Nebraska

LAND SURVEYOR'S CERTIFICATE  
I HEREBY CERTIFY THAT I have made a thorough and accurate survey of the above described land in accordance with the laws of the State of Nebraska, and that the same is correctly shown on this plat. I have compared the same with the original survey records of the same land, and find the same to be correct. I have also compared the same with the original survey records of the same land, and find the same to be correct. I have also compared the same with the original survey records of the same land, and find the same to be correct.

DATE OF SURVEY: August 14, 1996  
PLAT NO: 97-2013  
SECTION: 15  
TOWNSHIP: 14 NORTH  
RANGE: 11 EAST  
COUNTY: SARPY COUNTY, NEBRASKA

PREPARED BY: J.P. & S. ASSOCIATES, INC.  
15747 CANTON STREET, OMAHA, NEBRASKA 68154-1979  
TELEPHONE: (402) 486-8790  
FAX: (402) 486-8790

Lamp, Rynearson & Associates, Inc.  
SURVEYORS  
15747 CANTON STREET OMAHA, NEBRASKA 68154-1979  
TELEPHONE (402) 486-8790 FAX (402) 486-8790  
156TH TO 168TH STREET & HARRISON STREET, SARPY COUNTY, NEBRASKA

APPROVAL OF COUNTY BOARD OF COMMISSIONERS  
APPROVAL OF COUNTY PLANNING COMMISSION  
APPROVAL OF COUNTY BUILDING INSPECTOR

ACKNOWLEDGMENT OF DEEDS  
State of Nebraska, County of Douglas

STATE OF NEBRASKA, COUNTY OF DOUGLAS  
I, the undersigned, County Clerk, do hereby certify that the within and foregoing plat is a true and correct copy of the original plat as the same appears on file in my office, and that the same is a true and correct copy of the original plat as the same appears on file in my office.

NOTARY PUBLIC  
I, the undersigned, Notary Public for the State of Nebraska, do hereby certify that the within and foregoing plat is a true and correct copy of the original plat as the same appears on file in my office, and that the same is a true and correct copy of the original plat as the same appears on file in my office.

NOTARY PUBLIC  
I, the undersigned, Notary Public for the State of Nebraska, do hereby certify that the within and foregoing plat is a true and correct copy of the original plat as the same appears on file in my office, and that the same is a true and correct copy of the original plat as the same appears on file in my office.

NOTARY PUBLIC  
I, the undersigned, Notary Public for the State of Nebraska, do hereby certify that the within and foregoing plat is a true and correct copy of the original plat as the same appears on file in my office, and that the same is a true and correct copy of the original plat as the same appears on file in my office.

NOTARY PUBLIC  
I, the undersigned, Notary Public for the State of Nebraska, do hereby certify that the within and foregoing plat is a true and correct copy of the original plat as the same appears on file in my office, and that the same is a true and correct copy of the original plat as the same appears on file in my office.

NOTARY PUBLIC  
I, the undersigned, Notary Public for the State of Nebraska, do hereby certify that the within and foregoing plat is a true and correct copy of the original plat as the same appears on file in my office, and that the same is a true and correct copy of the original plat as the same appears on file in my office.

UNPLATTED

FINAL PLAT

APPROVAL OF COUNTY BOARD OF COMMISSIONERS  
APPROVAL OF COUNTY PLANNING COMMISSION  
APPROVAL OF COUNTY BUILDING INSPECTOR  
COUNTY TREASURER'S CERTIFICATE  
COUNTY SURVEYOR'S CERTIFICATE  
COUNTY CLERK'S CERTIFICATE  
NOTARY PUBLIC

STATE OF NEBRASKA, COUNTY OF DOUGLAS  
I, the undersigned, County Clerk, do hereby certify that the within and foregoing plat is a true and correct copy of the original plat as the same appears on file in my office, and that the same is a true and correct copy of the original plat as the same appears on file in my office.

620113

97-2013