

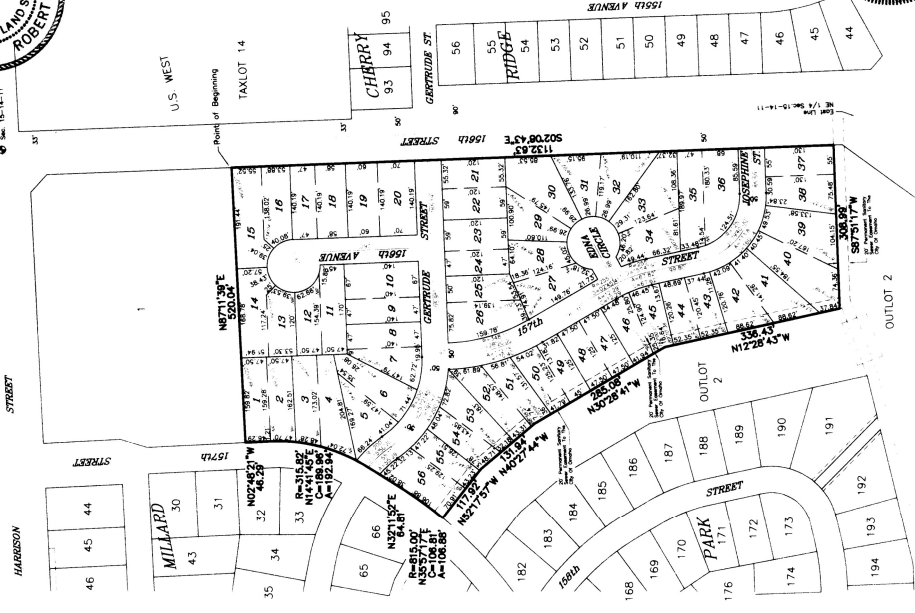
95-17742

Counter *Quil B*
Verify *M*
D.E. *M*
Proof *M*
Fees \$57.00
City State County

10-11-95 4:27 PM
95-17742
10-11-95

MILLARD PARK REPLAT 1

LOTS 1 THROUGH 56, INCLUSIVE, BEING A REPLATTING OF LOTS 2, THROUGH 29, MILLARD PARK, A SUBDIVISION, AS SURVEYED, PLATTED AND RECORDED IN SARPY COUNTY, NEBRASKA



DEDICATION
I, the undersigned, being a duly qualified and licensed Land Surveyor in the State of Nebraska, do hereby certify that the above and foregoing plat was prepared by me or under my direct supervision and that it is a true and correct copy of the original plat on file in my office, and that the same has been duly recorded in the public records of Sarpy County, Nebraska, in accordance with the provisions of the laws of the State of Nebraska relating to the recording of land surveys.

ACKNOWLEDGEMENT OF NOTARIES
I, the undersigned, being a duly qualified and licensed Notary Public in the State of Nebraska, do hereby certify that the above and foregoing plat was presented to me for my signature and seal, and that the same has been duly recorded in the public records of Sarpy County, Nebraska, in accordance with the provisions of the laws of the State of Nebraska relating to the recording of land surveys.

COUNTY SURVEYOR'S CERTIFICATE
This plat of MILLARD PARK REPLAT 1 was received by the Sarpy County Surveyor's Office on the 10th day of October, 1995, and is hereby certified to be a true and correct copy of the original plat on file in my office, and that the same has been duly recorded in the public records of Sarpy County, Nebraska, in accordance with the provisions of the laws of the State of Nebraska relating to the recording of land surveys.

COUNTY TREASURER'S CERTIFICATE
This plat of MILLARD PARK REPLAT 1 was received by the Sarpy County Treasurer's Office on the 10th day of October, 1995, and is hereby certified to be a true and correct copy of the original plat on file in my office, and that the same has been duly recorded in the public records of Sarpy County, Nebraska, in accordance with the provisions of the laws of the State of Nebraska relating to the recording of land surveys.

APPROVAL OF COUNTY PLANNING COMMISSION
This plat of MILLARD PARK REPLAT 1 was received by the Sarpy County Planning Commission on the 10th day of October, 1995, and is hereby approved for recording in the public records of Sarpy County, Nebraska, in accordance with the provisions of the laws of the State of Nebraska relating to the recording of land surveys.

APPROVAL OF COUNTY BOARD OF COMMISSIONERS
This plat of MILLARD PARK REPLAT 1 was received by the Sarpy County Board of Commissioners on the 10th day of October, 1995, and is hereby approved for recording in the public records of Sarpy County, Nebraska, in accordance with the provisions of the laws of the State of Nebraska relating to the recording of land surveys.

- NOTES: 1. ALL DISTANCES ARE SHOWN IN DECIMAL FEET. 2. ALL DISTANCES SHOWN ALONG CURVES ARE ARC. 3. ALL ANGLES ARE 90° UNLESS OTHERWISE NOTED. 4. ALL LINES ARE TO BE CONSIDERED AS STRAIGHT LINES. 5. DISTANCES AND ANGLES SHOWN IN PARENTHESES. 6. LOTS 1, 2, 3, 4, 5, 6, 7, 8, 9, 10, 11, 12, 13, 14, 15, 16, 17, 18, 19, 20, 21, 22, 23, 24, 25, 26, 27, 28, 29, 30, 31, 32, 33, 34, 35, 36, 37, 38, 39, 40, 41, 42, 43, 44, 45, 46, 47, 48, 49, 50, 51, 52, 53, 54, 55, 56, 57, 58, 59, 60, 61, 62, 63, 64, 65, 66, 67, 68, 69, 70, 71, 72, 73, 74, 75, 76, 77, 78, 79, 80, 81, 82, 83, 84, 85, 86, 87, 88, 89, 90, 91, 92, 93, 94, 95, 96, 97, 98, 99, 100, 101, 102, 103, 104, 105, 106, 107, 108, 109, 110, 111, 112, 113, 114, 115, 116, 117, 118, 119, 120, 121, 122, 123, 124, 125, 126, 127, 128, 129, 130, 131, 132, 133, 134, 135, 136, 137, 138, 139, 140, 141, 142, 143, 144, 145, 146, 147, 148, 149, 150, 151, 152, 153, 154, 155, 156, 157, 158, 159, 160, 161, 162, 163, 164, 165, 166, 167, 168, 169, 170, 171, 172, 173, 174, 175, 176, 177, 178, 179, 180, 181, 182, 183, 184, 185, 186, 187, 188, 189, 190, 191, 192, 193, 194, 195, 196, 197, 198, 199, 200, 201, 202, 203, 204, 205, 206, 207, 208, 209, 210, 211, 212, 213, 214, 215, 216, 217, 218, 219, 220, 221, 222, 223, 224, 225, 226, 227, 228, 229, 230, 231, 232, 233, 234, 235, 236, 237, 238, 239, 240, 241, 242, 243, 244, 245, 246, 247, 248, 249, 250, 251, 252, 253, 254, 255, 256, 257, 258, 259, 260, 261, 262, 263, 264, 265, 266, 267, 268, 269, 270, 271, 272, 273, 274, 275, 276, 277, 278, 279, 280, 281, 282, 283, 284, 285, 286, 287, 288, 289, 290, 291, 292, 293, 294, 295, 296, 297, 298, 299, 300, 301, 302, 303, 304, 305, 306, 307, 308, 309, 310, 311, 312, 313, 314, 315, 316, 317, 318, 319, 320, 321, 322, 323, 324, 325, 326, 327, 328, 329, 330, 331, 332, 333, 334, 335, 336, 337, 338, 339, 340, 341, 342, 343, 344, 345, 346, 347, 348, 349, 350, 351, 352, 353, 354, 355, 356, 357, 358, 359, 360, 361, 362, 363, 364, 365, 366, 367, 368, 369, 370, 371, 372, 373, 374, 375, 376, 377, 378, 379, 380, 381, 382, 383, 384, 385, 386, 387, 388, 389, 390, 391, 392, 393, 394, 395, 396, 397, 398, 399, 400, 401, 402, 403, 404, 405, 406, 407, 408, 409, 410, 411, 412, 413, 414, 415, 416, 417, 418, 419, 420, 421, 422, 423, 424, 425, 426, 427, 428, 429, 430, 431, 432, 433, 434, 435, 436, 437, 438, 439, 440, 441, 442, 443, 444, 445, 446, 447, 448, 449, 450, 451, 452, 453, 454, 455, 456, 457, 458, 459, 460, 461, 462, 463, 464, 465, 466, 467, 468, 469, 470, 471, 472, 473, 474, 475, 476, 477, 478, 479, 480, 481, 482, 483, 484, 485, 486, 487, 488, 489, 490, 491, 492, 493, 494, 495, 496, 497, 498, 499, 500, 501, 502, 503, 504, 505, 506, 507, 508, 509, 510, 511, 512, 513, 514, 515, 516, 517, 518, 519, 520, 521, 522, 523, 524, 525, 526, 527, 528, 529, 530, 531, 532, 533, 534, 535, 536, 537, 538, 539, 540, 541, 542, 543, 544, 545, 546, 547, 548, 549, 550, 551, 552, 553, 554, 555, 556, 557, 558, 559, 560, 561, 562, 563, 564, 565, 566, 567, 568, 569, 570, 571, 572, 573, 574, 575, 576, 577, 578, 579, 580, 581, 582, 583, 584, 585, 586, 587, 588, 589, 590, 591, 592, 593, 594, 595, 596, 597, 598, 599, 600, 601, 602, 603, 604, 605, 606, 607, 608, 609, 610, 611, 612, 613, 614, 615, 616, 617, 618, 619, 620, 621, 622, 623, 624, 625, 626, 627, 628, 629, 630, 631, 632, 633, 634, 635, 636, 637, 638, 639, 640, 641, 642, 643, 644, 645, 646, 647, 648, 649, 650, 651, 652, 653, 654, 655, 656, 657, 658, 659, 660, 661, 662, 663, 664, 665, 666, 667, 668, 669, 670, 671, 672, 673, 674, 675, 676, 677, 678, 679, 680, 681, 682, 683, 684, 685, 686, 687, 688, 689, 690, 691, 692, 693, 694, 695, 696, 697, 698, 699, 700, 701, 702, 703, 704, 705, 706, 707, 708, 709, 710, 711, 712, 713, 714, 715, 716, 717, 718, 719, 720, 721, 722, 723, 724, 725, 726, 727, 728, 729, 730, 731, 732, 733, 734, 735, 736, 737, 738, 739, 740, 741, 742, 743, 744, 745, 746, 747, 748, 749, 750, 751, 752, 753, 754, 755, 756, 757, 758, 759, 760, 761, 762, 763, 764, 765, 766, 767, 768, 769, 770, 771, 772, 773, 774, 775, 776, 777, 778, 779, 780, 781, 782, 783, 784, 785, 786, 787, 788, 789, 790, 791, 792, 793, 794, 795, 796, 797, 798, 799, 800, 801, 802, 803, 804, 805, 806, 807, 808, 809, 810, 811, 812, 813, 814, 815, 816, 817, 818, 819, 820, 821, 822, 823, 824, 825, 826, 827, 828, 829, 830, 831, 832, 833, 834, 835, 836, 837, 838, 839, 840, 841, 842, 843, 844, 845, 846, 847, 848, 849, 850, 851, 852, 853, 854, 855, 856, 857, 858, 859, 860, 861, 862, 863, 864, 865, 866, 867, 868, 869, 870, 871, 872, 873, 874, 875, 876, 877, 878, 879, 880, 881, 882, 883, 884, 885, 886, 887, 888, 889, 890, 891, 892, 893, 894, 895, 896, 897, 898, 899, 900, 901, 902, 903, 904, 905, 906, 907, 908, 909, 910, 911, 912, 913, 914, 915, 916, 917, 918, 919, 920, 921, 922, 923, 924, 925, 926, 927, 928, 929, 930, 931, 932, 933, 934, 935, 936, 937, 938, 939, 940, 941, 942, 943, 944, 945, 946, 947, 948, 949, 950, 951, 952, 953, 954, 955, 956, 957, 958, 959, 960, 961, 962, 963, 964, 965, 966, 967, 968, 969, 970, 971, 972, 973, 974, 975, 976, 977, 978, 979, 980, 981, 982, 983, 984, 985, 986, 987, 988, 989, 990, 991, 992, 993, 994, 995, 996, 997, 998, 999, 1000.

lamp, rymearson & associates, inc.
SURVEYORS
14777 California Street Omaha, Nebraska 68144-9779
402-498-5268
402-498-5780
FAX 402-498-5780

designer RDP
drawn by RDP
revisions
job number 95-17742
date 9/8/1995
sheet 1 of 1

FINAL PLAT

MILLARD PARK REPLAT 1
156TH STREET, SOUTH OF HARRISON, SARPY COUNTY, NEBRASKA