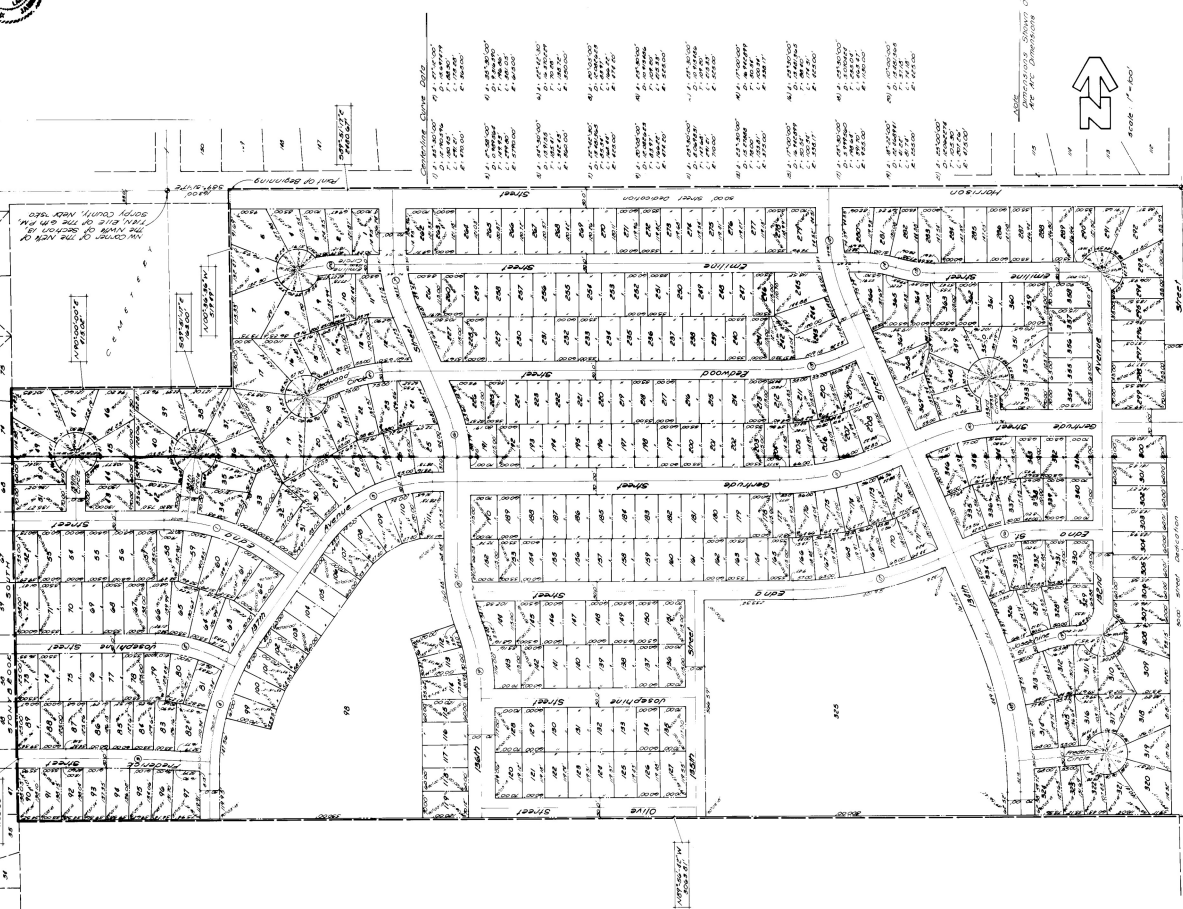


MILLARD HIGHLANDS SOUTH II

Section 19, T11N, R2E, E1/4 of the 36th Township, County of Adams, Kansas



PLAT OF MILLARD HIGHLANDS SOUTH II AS APPROVED BY THE COUNTY BOARD OF COMMISSIONERS OF ADAMS COUNTY, KANSAS, ON THE 12th DAY OF FEBRUARY, 1929.

THE DATE OF RECORDING OF THIS PLAT IS FEBRUARY 12, 1929.

RECORDED IN THE OFFICE OF THE CLERK OF ADAMS COUNTY, KANSAS, ON FEBRUARY 12, 1929.

ADAMS COUNTY, KANSAS.

GENERAL DESCRIPTION OF THE LANDS DESCRIBED IN THIS PLAT: THIS PLAT IS A PART OF THE MILLARD HIGHLANDS SOUTH II, AS APPROVED BY THE COUNTY BOARD OF COMMISSIONERS OF ADAMS COUNTY, KANSAS, ON THE 12th DAY OF FEBRUARY, 1929.

SECTION 19, T11N, R2E, E1/4 OF THE 36TH TOWNSHIP, COUNTY OF ADAMS, KANSAS.

SECTION 19, T11N, R2E, E1/4 OF THE 36TH TOWNSHIP, COUNTY OF ADAMS, KANSAS.

SECTION 19, T11N, R2E, E1/4 OF THE 36TH TOWNSHIP, COUNTY OF ADAMS, KANSAS.

SECTION 19, T11N, R2E, E1/4 OF THE 36TH TOWNSHIP, COUNTY OF ADAMS, KANSAS.

SECTION 19, T11N, R2E, E1/4 OF THE 36TH TOWNSHIP, COUNTY OF ADAMS, KANSAS.

SECTION 19, T11N, R2E, E1/4 OF THE 36TH TOWNSHIP, COUNTY OF ADAMS, KANSAS.

SECTION 19, T11N, R2E, E1/4 OF THE 36TH TOWNSHIP, COUNTY OF ADAMS, KANSAS.

SECTION 19, T11N, R2E, E1/4 OF THE 36TH TOWNSHIP, COUNTY OF ADAMS, KANSAS.

SECTION 19, T11N, R2E, E1/4 OF THE 36TH TOWNSHIP, COUNTY OF ADAMS, KANSAS.

SECTION 19, T11N, R2E, E1/4 OF THE 36TH TOWNSHIP, COUNTY OF ADAMS, KANSAS.

SECTION 19, T11N, R2E, E1/4 OF THE 36TH TOWNSHIP, COUNTY OF ADAMS, KANSAS.

SECTION 19, T11N, R2E, E1/4 OF THE 36TH TOWNSHIP, COUNTY OF ADAMS, KANSAS.

92

Sheet # 5152

ADAMS COUNTY, KANSAS

ADAMS COUNTY, KANSAS

ADAMS COUNTY, KANSAS

ADAMS COUNTY, KANSAS

ADAMS COUNTY, KANSAS

ADAMS COUNTY, KANSAS

ADAMS COUNTY, KANSAS

54-120

AFFIDAVIT OF CORRECTION

Correction to Millard Highlands South II, a Subdivision in part of Section 13-T14N-R11E of the 6th P.M., Sarpy County, Nebraska.

I, the undersigned Registered Land Surveyor, do hereby submit this drawing in order to correct an error in a dimension on Lots 308 and 309, Millard Highlands South II, as recorded in Book 7, Page 92, of the Records in the Register of Deeds Office, Sarpy County, Nebraska.

I hereby certify that I am the identical person whose name appears on the Surveyor's Certificate of said Millard Highlands South II.

James A. Wanner

Registered Land Surveyor

L.S. 508
Registration No.

March 6, 1981
Date

State of Nebraska) SS
County of Douglas)

On this 10 day of March, 1981, before me, a notary public, duly commissioned and qualified in and for said County, appeared James D. Warner, who is personally known by me to be the identical person whose name is affixed above.

Witness my hand and official seal, in Omaha, Nebraska, the date last aforesaid.

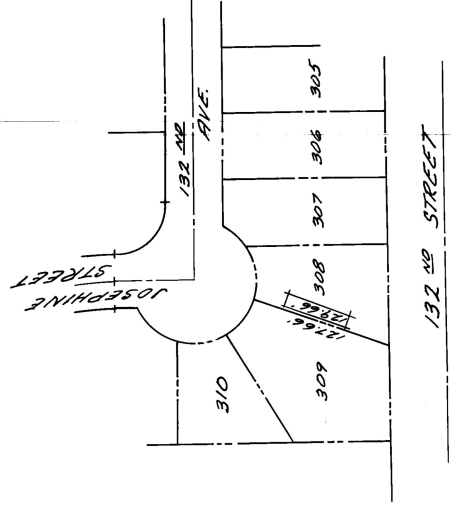
My commission expires on July 6, 1984

James D. Warner

A GENERAL NOTARY - STATE OF NEBRASKA
ROSE M. WELLS
My Comm. Exp. July 6, 1984



3-13-81 12:35p 54 Mini Rec 33
1-24 Pub of the



L E G E N D
PLATTED DIMENSION 12766
CORRECTED DIMENSION 12866

SCALE: 1"=100'

Plc. # 1965

A