

AFFIDAVIT

MERNALD'S ADDITION

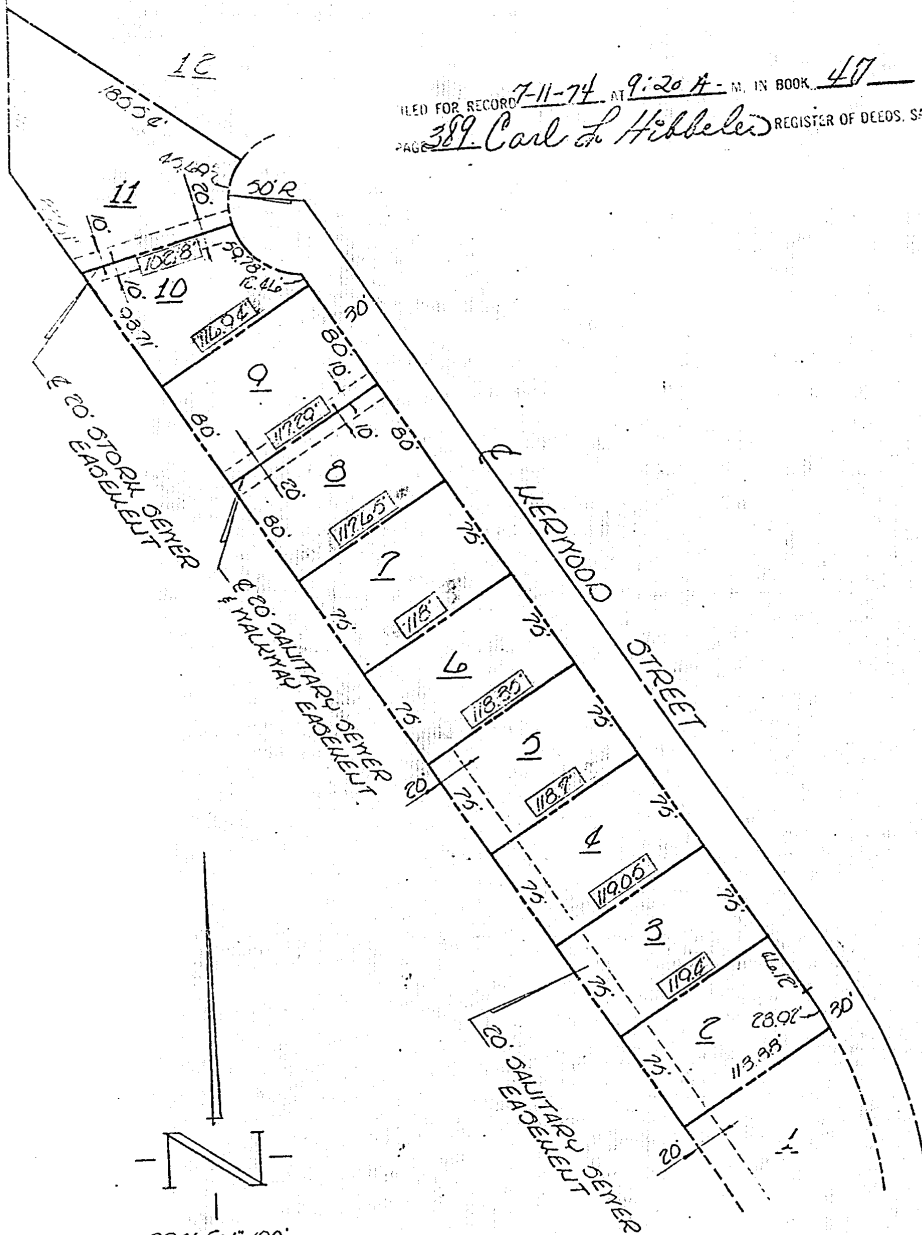
47-389

A Subdivision located in a part of Tax Lots 3A, 2, 1A, & 1B in Fah's Subdivision and a part of Tax Lot 12B located in a part of Section 23, Township 14 North, Range 13 East of the 6th P.M., together with a part of Tax Lot 1A2 located in a part of Section 26, Township 14 North, Range 13 East of the 6th P.M., Sarpy County, Nebraska.

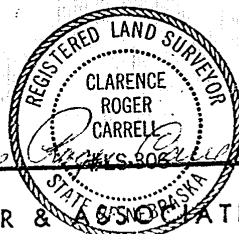
This is a corrected plat of Lots 2-3-4-5-6-7-8-9-10-11

This is to certify that part of the dimensions on Lots 2 thru 10 inclusive, the original platting of Mernald's Addition, were shown in error and to further certify that the below plat correctly shows originally intended lot dimensions.

FILED FOR RECORD 7-11-74 AT 9:20 A.M. IN BOOK 477 OF Misc. Recs. 254 Copy
 PAGE 389 Carl L. Hibbeles REGISTER OF DEEDS, SARPY COUNTY, NEB 550



LEGEND:
 [Solid Line] CORRECTED DIMENSIONS



L.S. 306

GOLLEHON, SCHEMMER & ASSOCIATES, INC.
 ARCHITECTS • ENGINEERS • PLANNERS

DESIGNED _____ DRAWN ROP CHECKED _____ DATE 6-23-74 SHEET NO. 171A-02