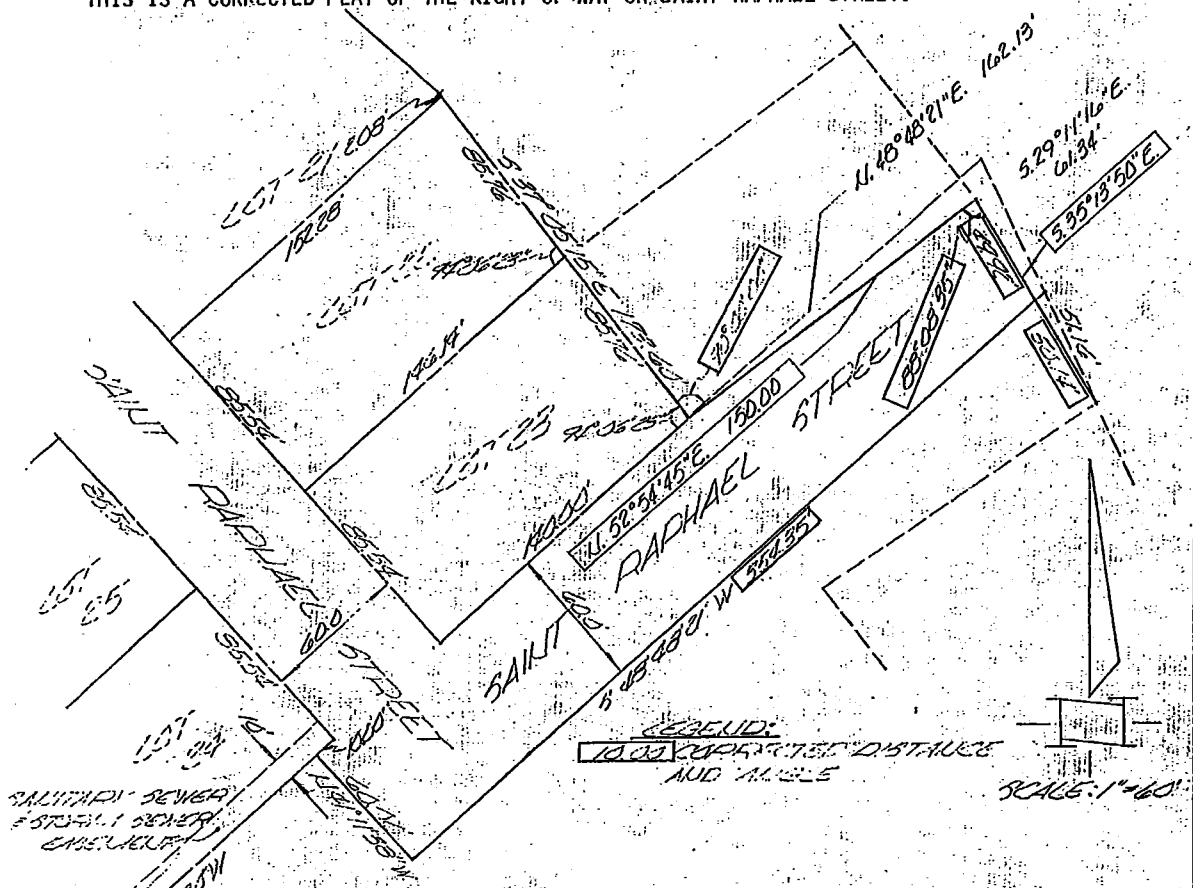


46-579

AFFIDAVIT

A SUBDIVISION LOCATED IN A PART OF TAX LOTS 3A, 2, 1A, & 1B IN FAHS SUBDIVISION, A PLATTED AND RECORDED SUBDIVISION IN SARPY COUNTY, NEBRASKA, AND A PART OF TAX LOT 12B LOCATED IN A PART OF SECTION 23, TOWNSHIP 14 NORTH, RANGE 13 EAST OF THE 6TH P.M. TOGETHER WITH A PART OF TAX LOT 1A2 LOCATED IN A PART OF SECTION 26, TOWNSHIP 14 NORTH, RANGE 13 EAST OF THE 6TH P.M., SARPY COUNTY, NEBRASKA.

THIS IS A CORRECTED PLAT OF THE RIGHT OF WAY ON SAINT RAPHAEL STREET.



LEGEND:
 100' APPROXIMATE DISTANCE
 AND ANGLE

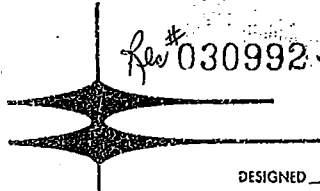
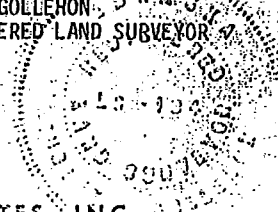
SCALE: 1"=60'

THIS IS TO CERTIFY THAT DIMENSIONS AND ANGLES ON THE RIGHT OF WAY ON SAINTS RAPHAEL STREET; THE ORIGINAL PLATTING OF MERNALD'S ADDITION, WAS IN ERROR.

DATE: AUGUST 28, 1973

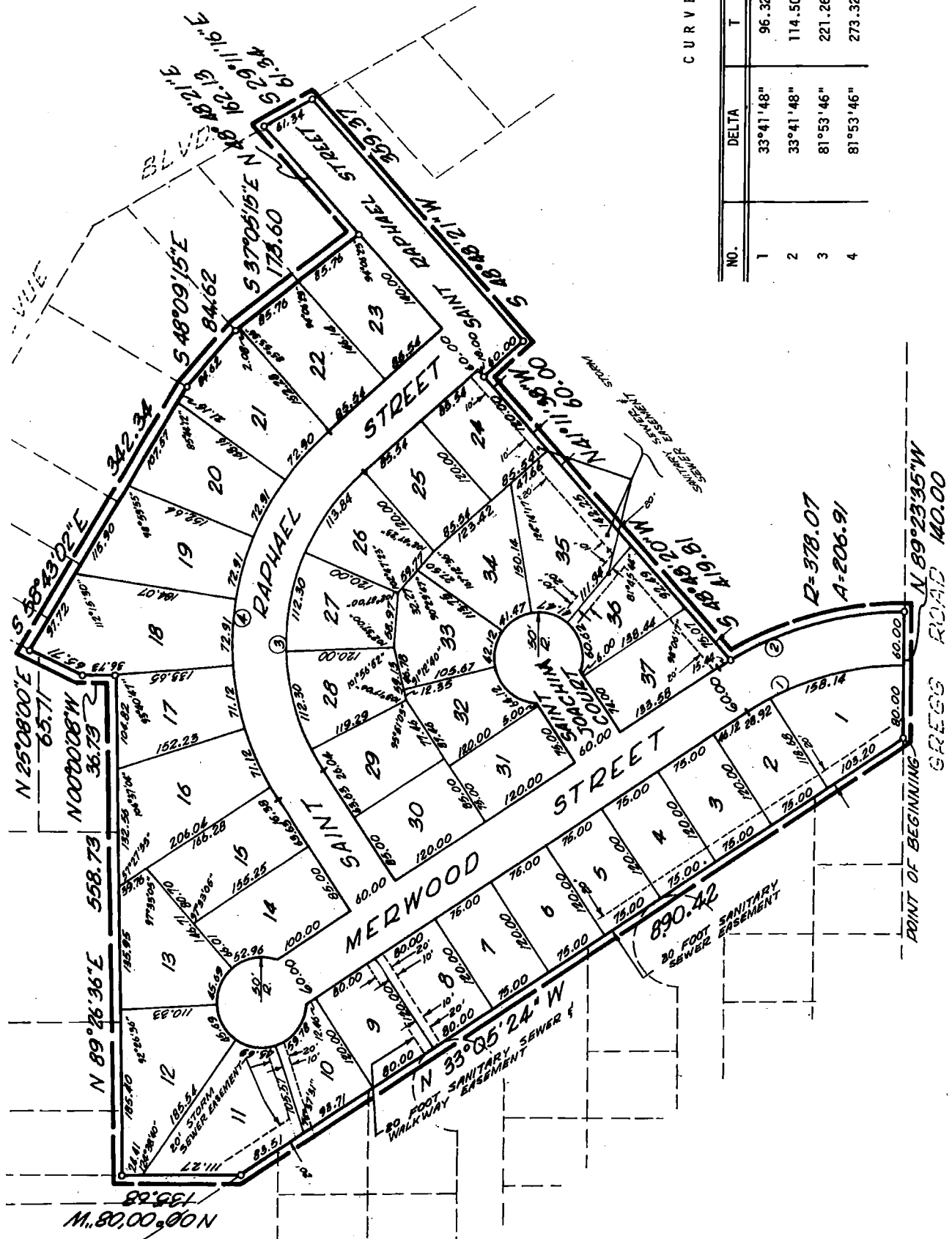
FILED FOR RECORD 9-22-73 BY 10:00 A.M. IN BOOK 46 OF *Merrald* 375
 PAGE 579 *Carl & Hilbert* REGISTER OF DEEDS, SARPY COUNTY, NEB.

E. M. Gollehon
 E. M. GOLLEHON
 REGISTERED LAND SURVEYOR



GOLLEHON, SCHEMMER & ASSOCIATES, INC.
 ARCHITECTS • ENGINEERS • PLANNERS

DESIGNED _____ DRAWN J.H.G. CHECKED m DATE 8/28/73 SHEET NO. 5574-35



CURVE DATA

NO.	DELTA	T	R
1	33°41'48"	96.32	318.07
2	33°41'48"	114.50	378.07
3	81°53'46"	221.26	255.00
4	81°53'46"	273.32	315.00

R=378.07
A=206.91

POINT OF BEGINNING
N 89°23'35"W
GREGG ROAD 40.00'