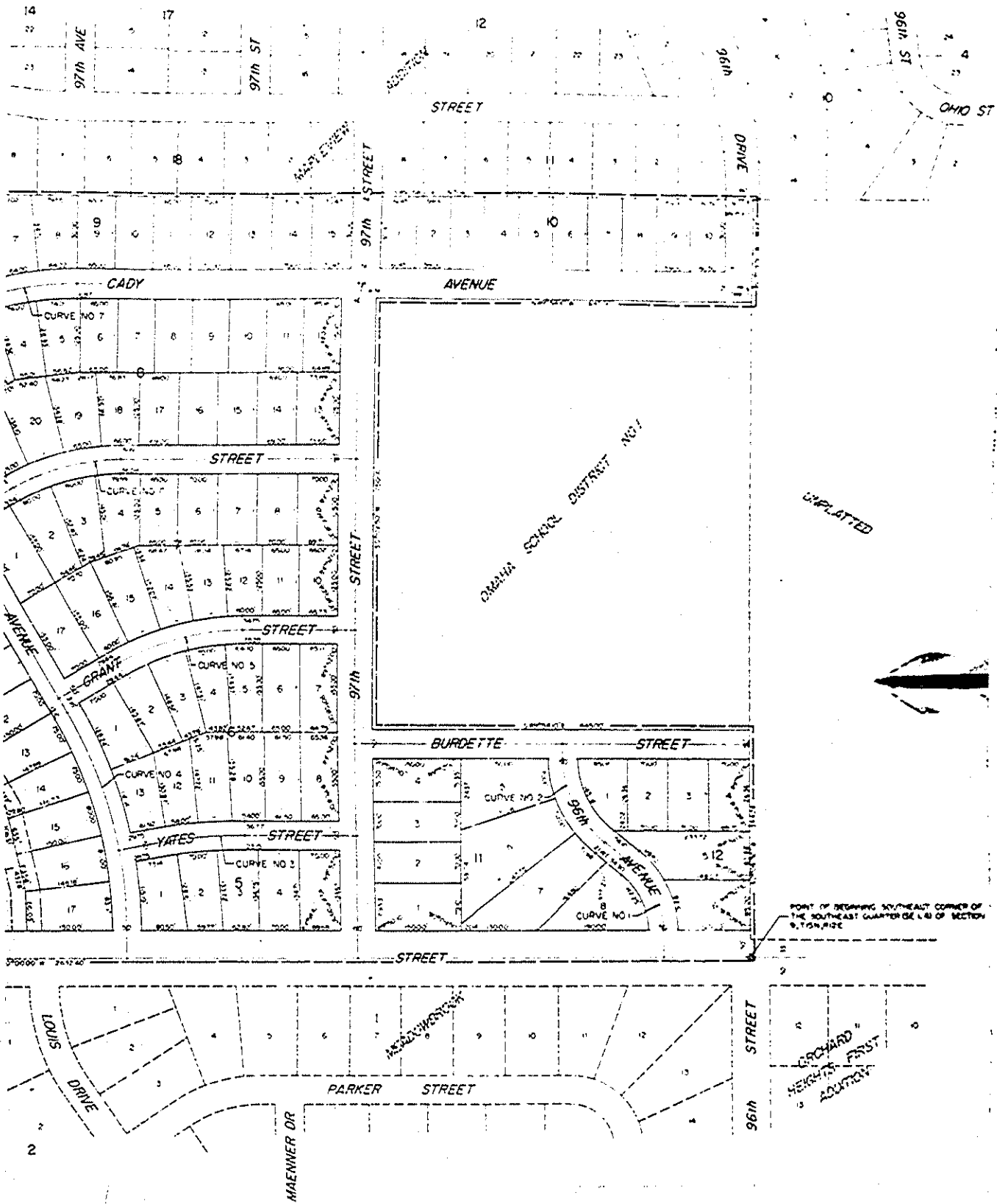


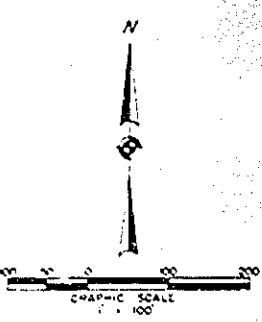
MEADOWVIEW

ALL OF BLOCKS 1 TO 12 INCLUSIVE
 A SUBDIVISION OF A PART OF THE S 1/2 OF THE
 SE 1/4 OF SEC 9, T15N, R12E OF THE 6TH PM ALL IN
 DOUGLAS COUNTY, NEBRASKA



CURVE DATA		CURVE DATA		CURVE DATA		CURVE DATA	
NO	DATA	NO	DATA	NO	DATA	NO	DATA
NO 3	Δ 101°51'54"	NO 4	Δ 30°19'52"	NO 5	Δ 30°21'42"	NO 6	Δ 30°21'42"
R	95000	R	74274	R	42000	R	36500
T	8284	T	20132	T	11396	T	7904
L	6482	L	39319	L	22256	L	9342
D	0°22'12"	D	7°42'50"	D	19°36'37"	D	19°41'57"
NO 7	Δ 101°51'54"	NO 8	Δ 30°19'52"	NO 9	Δ 30°21'42"	NO 10	Δ 30°21'42"
R	95000	R	74274	R	42000	R	36500
T	8284	T	20132	T	11396	T	7904
L	6482	L	39319	L	22256	L	9342
D	0°22'12"	D	7°42'50"	D	19°36'37"	D	19°41'57"
NO 11	Δ 89°53'55"	NO 12	Δ 43°02'32"	NO 13	Δ 17°45'25"	NO 14	Δ 59°42'53"
R	60000	R	25000	R	45200	R	45000
T	7889	T	9158	T	1030	T	7472
L	9414	L	18781	L	10016	L	17197
D	1°21'35"	D	22°55'06"	D	12°13'57"	D	34°43'24"

1158 341



30	5' 32"	5	5' 32"	63	5' 32"
31	145' 0"	6	145' 0"	64	145' 0"
32	7000	7	7000	65	7000
33	3043	8	3043	66	3043
34	39' 30 42"	9	39' 30 42"	67	39' 30 42"
35	7' 4"	10	7' 4"	68	7' 4"
36	30' 4"	11	30' 4"	69	30' 4"
37	30' 4"	12	30' 4"	70	30' 4"
38	30' 4"	13	30' 4"	71	30' 4"
39	30' 4"	14	30' 4"	72	30' 4"
40	30' 4"	15	30' 4"	73	30' 4"
41	30' 4"	16	30' 4"	74	30' 4"
42	30' 4"	17	30' 4"	75	30' 4"
43	30' 4"	18	30' 4"	76	30' 4"
44	30' 4"	19	30' 4"	77	30' 4"
45	30' 4"	20	30' 4"	78	30' 4"
46	30' 4"	21	30' 4"	79	30' 4"
47	30' 4"	22	30' 4"	80	30' 4"
48	30' 4"	23	30' 4"	81	30' 4"
49	30' 4"	24	30' 4"	82	30' 4"
50	30' 4"	25	30' 4"	83	30' 4"
51	30' 4"	26	30' 4"	84	30' 4"
52	30' 4"	27	30' 4"	85	30' 4"
53	30' 4"	28	30' 4"	86	30' 4"
54	30' 4"	29	30' 4"	87	30' 4"
55	30' 4"	30	30' 4"	88	30' 4"
56	30' 4"	31	30' 4"	89	30' 4"
57	30' 4"	32	30' 4"	90	30' 4"
58	30' 4"	33	30' 4"	91	30' 4"
59	30' 4"	34	30' 4"	92	30' 4"
60	30' 4"	35	30' 4"	93	30' 4"
61	30' 4"	36	30' 4"	94	30' 4"
62	30' 4"	37	30' 4"	95	30' 4"
63	30' 4"	38	30' 4"	96	30' 4"
64	30' 4"	39	30' 4"	97	30' 4"
65	30' 4"	40	30' 4"	98	30' 4"
66	30' 4"	41	30' 4"	99	30' 4"
67	30' 4"	42	30' 4"	100	30' 4"
68	30' 4"	43	30' 4"	101	30' 4"
69	30' 4"	44	30' 4"	102	30' 4"
70	30' 4"	45	30' 4"	103	30' 4"
71	30' 4"	46	30' 4"	104	30' 4"
72	30' 4"	47	30' 4"	105	30' 4"
73	30' 4"	48	30' 4"	106	30' 4"
74	30' 4"	49	30' 4"	107	30' 4"
75	30' 4"	50	30' 4"	108	30' 4"
76	30' 4"	51	30' 4"	109	30' 4"
77	30' 4"	52	30' 4"	110	30' 4"
78	30' 4"	53	30' 4"	111	30' 4"
79	30' 4"	54	30' 4"	112	30' 4"
80	30' 4"	55	30' 4"	113	30' 4"
81	30' 4"	56	30' 4"	114	30' 4"
82	30' 4"	57	30' 4"	115	30' 4"
83	30' 4"	58	30' 4"	116	30' 4"
84	30' 4"	59	30' 4"	117	30' 4"
85	30' 4"	60	30' 4"	118	30' 4"
86	30' 4"	61	30' 4"	119	30' 4"
87	30' 4"	62	30' 4"	120	30' 4"