

MARINDA HEIGHTS CONDOMINIUMS 51ST AND MARINDA OMAHA, NEB.

ARCHITECTURAL SYMBOLS	MECHANICAL SYMBOLS	ELECTRICAL SYMBOLS
EARTH	COLD WATER	WALL LIGHT
SAND FILL	HOT WATER	CEILING LIGHT
CRUSHED ROCK ON GRAVEL FILL	SOL. ON WASTE BELOW GRADE	FLUORESCENT LIGHT
CONCRETE	SOL. ON WASTE ABOVE GRADE	PENCIL LAMPHOLDER WITH BALL CHAIN
CONCRETE BLOCK	VENT	EXIT LIGHT
BRICK ON STONE	GAS	JUNCTION BOX
EXPOSED INSUL. FINISH ON ROUGH MASONRY	WATER HEATER	DUPLEX OUTLET
MASONRY LUMBER	FLOOR DRAIN	RADIATING HEATS IN POLES
INSULATION	SHOWER HEAD	DUPLEX OUTLET, SPLIT SWITCH
STUD PARTITIONS	METER	RADIANT FLOOR OUTLET
DRYWALL CEILING	VALVE	240 VOLT OUTLET
	SPRAY OUT AND RESETS	30 AMP SWITCH
	RETURN DUCT AND REGISTERS	TELEPHONE OUTLET
	THE REGISTER	EXHAUST FAN
		BELL ON CHIME
		FLOOR OUTLET
		SINGLE SWITCH, SINGLE EXTENSION
		HAND PULL STATION
		FIRE ALARM PULL
		EXTERIOR POST LIGHT
		LAND ENTRY ON FRONT

ABBREVIATIONS	ABBREVIATIONS
A/B ANCHOR BOLTS	LE SHEET ELEVATION
ALUM ALUMINUM	ACR ACCT
BLK BLOCK	LAN LANTERN
B/S BENCH MARK	L/L LIGHT FIXTURE
C1 CURB ROW	MT METAL
C2 CURB ROW	MT METAL
C3 CURB ROW	MT METAL
C4 CURB ROW	MT METAL
C5 CURB ROW	MT METAL
C6 CURB ROW	MT METAL
C7 CURB ROW	MT METAL
C8 CURB ROW	MT METAL
C9 CURB ROW	MT METAL
C10 CURB ROW	MT METAL
C11 CURB ROW	MT METAL
C12 CURB ROW	MT METAL
C13 CURB ROW	MT METAL
C14 CURB ROW	MT METAL
C15 CURB ROW	MT METAL
C16 CURB ROW	MT METAL
C17 CURB ROW	MT METAL
C18 CURB ROW	MT METAL
C19 CURB ROW	MT METAL
C20 CURB ROW	MT METAL
C21 CURB ROW	MT METAL
C22 CURB ROW	MT METAL
C23 CURB ROW	MT METAL
C24 CURB ROW	MT METAL
C25 CURB ROW	MT METAL
C26 CURB ROW	MT METAL
C27 CURB ROW	MT METAL
C28 CURB ROW	MT METAL
C29 CURB ROW	MT METAL
C30 CURB ROW	MT METAL
C31 CURB ROW	MT METAL
C32 CURB ROW	MT METAL
C33 CURB ROW	MT METAL
C34 CURB ROW	MT METAL
C35 CURB ROW	MT METAL
C36 CURB ROW	MT METAL
C37 CURB ROW	MT METAL
C38 CURB ROW	MT METAL
C39 CURB ROW	MT METAL
C40 CURB ROW	MT METAL
C41 CURB ROW	MT METAL
C42 CURB ROW	MT METAL
C43 CURB ROW	MT METAL
C44 CURB ROW	MT METAL
C45 CURB ROW	MT METAL
C46 CURB ROW	MT METAL
C47 CURB ROW	MT METAL
C48 CURB ROW	MT METAL
C49 CURB ROW	MT METAL
C50 CURB ROW	MT METAL
C51 CURB ROW	MT METAL
C52 CURB ROW	MT METAL
C53 CURB ROW	MT METAL
C54 CURB ROW	MT METAL
C55 CURB ROW	MT METAL
C56 CURB ROW	MT METAL
C57 CURB ROW	MT METAL
C58 CURB ROW	MT METAL
C59 CURB ROW	MT METAL
C60 CURB ROW	MT METAL
C61 CURB ROW	MT METAL
C62 CURB ROW	MT METAL
C63 CURB ROW	MT METAL
C64 CURB ROW	MT METAL
C65 CURB ROW	MT METAL
C66 CURB ROW	MT METAL
C67 CURB ROW	MT METAL
C68 CURB ROW	MT METAL
C69 CURB ROW	MT METAL
C70 CURB ROW	MT METAL
C71 CURB ROW	MT METAL
C72 CURB ROW	MT METAL
C73 CURB ROW	MT METAL
C74 CURB ROW	MT METAL
C75 CURB ROW	MT METAL
C76 CURB ROW	MT METAL
C77 CURB ROW	MT METAL
C78 CURB ROW	MT METAL
C79 CURB ROW	MT METAL
C80 CURB ROW	MT METAL
C81 CURB ROW	MT METAL
C82 CURB ROW	MT METAL
C83 CURB ROW	MT METAL
C84 CURB ROW	MT METAL
C85 CURB ROW	MT METAL
C86 CURB ROW	MT METAL
C87 CURB ROW	MT METAL
C88 CURB ROW	MT METAL
C89 CURB ROW	MT METAL
C90 CURB ROW	MT METAL
C91 CURB ROW	MT METAL
C92 CURB ROW	MT METAL
C93 CURB ROW	MT METAL
C94 CURB ROW	MT METAL
C95 CURB ROW	MT METAL
C96 CURB ROW	MT METAL
C97 CURB ROW	MT METAL
C98 CURB ROW	MT METAL
C99 CURB ROW	MT METAL
C100 CURB ROW	MT METAL

GENERAL NOTES

1. ALL WORK SHALL BE IN ACCORDANCE WITH THE CITY OF OMAHA, IOWA, ORDINANCES AND SPECIFICATIONS.
2. ALL WORK SHALL BE IN ACCORDANCE WITH THE CITY OF OMAHA, IOWA, ORDINANCES AND SPECIFICATIONS.
3. ALL WORK SHALL BE IN ACCORDANCE WITH THE CITY OF OMAHA, IOWA, ORDINANCES AND SPECIFICATIONS.
4. ALL WORK SHALL BE IN ACCORDANCE WITH THE CITY OF OMAHA, IOWA, ORDINANCES AND SPECIFICATIONS.
5. ALL WORK SHALL BE IN ACCORDANCE WITH THE CITY OF OMAHA, IOWA, ORDINANCES AND SPECIFICATIONS.
6. ALL WORK SHALL BE IN ACCORDANCE WITH THE CITY OF OMAHA, IOWA, ORDINANCES AND SPECIFICATIONS.
7. ALL WORK SHALL BE IN ACCORDANCE WITH THE CITY OF OMAHA, IOWA, ORDINANCES AND SPECIFICATIONS.
8. ALL WORK SHALL BE IN ACCORDANCE WITH THE CITY OF OMAHA, IOWA, ORDINANCES AND SPECIFICATIONS.
9. ALL WORK SHALL BE IN ACCORDANCE WITH THE CITY OF OMAHA, IOWA, ORDINANCES AND SPECIFICATIONS.
10. ALL WORK SHALL BE IN ACCORDANCE WITH THE CITY OF OMAHA, IOWA, ORDINANCES AND SPECIFICATIONS.

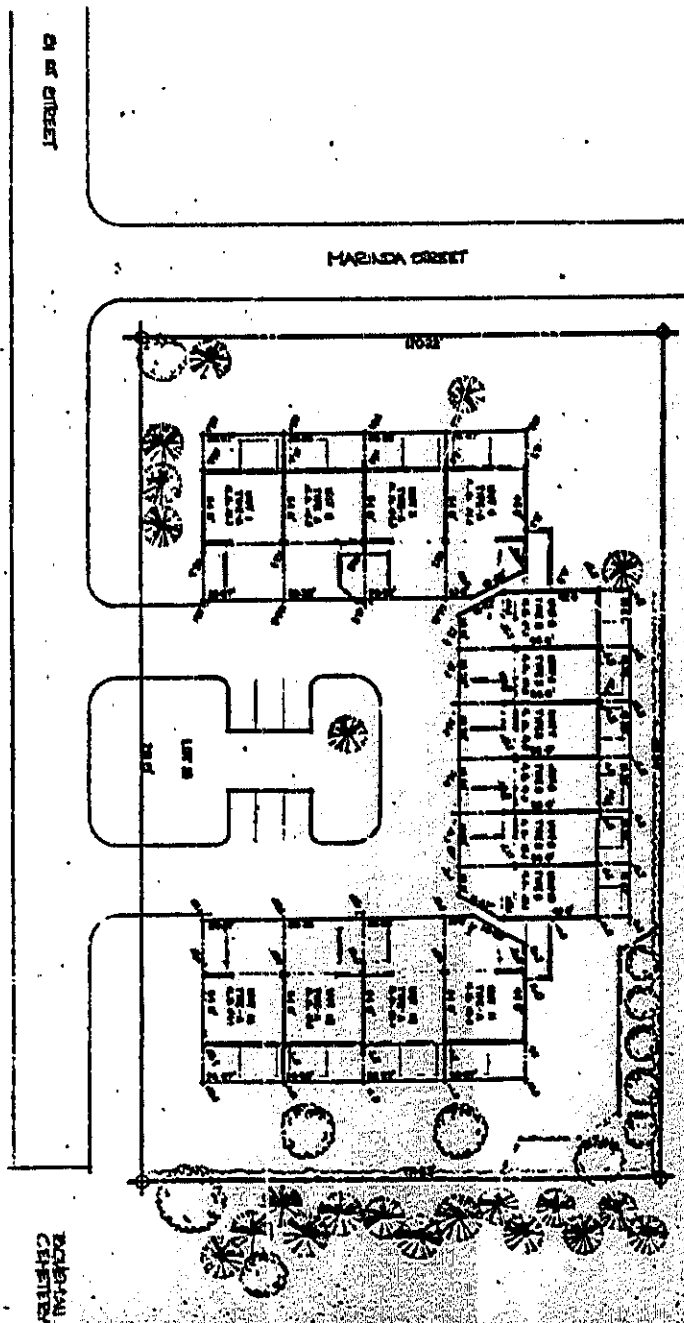
INDEX

1. CIVIL PLAN
2. CONSTRUCTION AND
3. UTILITY AND GROUND PLAN
4. 1st FLOOR PLAN
5. 2nd FLOOR PLAN
6. 3rd FLOOR PLAN
7. 4th FLOOR PLAN
8. 5th FLOOR PLAN
9. 6th FLOOR PLAN
10. 7th FLOOR PLAN
11. 8th FLOOR PLAN
12. 9th FLOOR PLAN
13. 10th FLOOR PLAN
14. 11th FLOOR PLAN
15. 12th FLOOR PLAN
16. 13th FLOOR PLAN
17. 14th FLOOR PLAN
18. 15th FLOOR PLAN
19. 16th FLOOR PLAN
20. 17th FLOOR PLAN
21. 18th FLOOR PLAN
22. 19th FLOOR PLAN
23. 20th FLOOR PLAN
24. 21st FLOOR PLAN
25. 22nd FLOOR PLAN
26. 23rd FLOOR PLAN
27. 24th FLOOR PLAN
28. 25th FLOOR PLAN
29. 26th FLOOR PLAN
30. 27th FLOOR PLAN
31. 28th FLOOR PLAN
32. 29th FLOOR PLAN
33. 30th FLOOR PLAN
34. 31st FLOOR PLAN
35. 32nd FLOOR PLAN
36. 33rd FLOOR PLAN
37. 34th FLOOR PLAN
38. 35th FLOOR PLAN
39. 36th FLOOR PLAN
40. 37th FLOOR PLAN
41. 38th FLOOR PLAN
42. 39th FLOOR PLAN
43. 40th FLOOR PLAN
44. 41st FLOOR PLAN
45. 42nd FLOOR PLAN
46. 43rd FLOOR PLAN
47. 44th FLOOR PLAN
48. 45th FLOOR PLAN
49. 46th FLOOR PLAN
50. 47th FLOOR PLAN
51. 48th FLOOR PLAN
52. 49th FLOOR PLAN
53. 50th FLOOR PLAN
54. 51st FLOOR PLAN
55. 52nd FLOOR PLAN
56. 53rd FLOOR PLAN
57. 54th FLOOR PLAN
58. 55th FLOOR PLAN
59. 56th FLOOR PLAN
60. 57th FLOOR PLAN
61. 58th FLOOR PLAN
62. 59th FLOOR PLAN
63. 60th FLOOR PLAN
64. 61st FLOOR PLAN
65. 62nd FLOOR PLAN
66. 63rd FLOOR PLAN
67. 64th FLOOR PLAN
68. 65th FLOOR PLAN
69. 66th FLOOR PLAN
70. 67th FLOOR PLAN
71. 68th FLOOR PLAN
72. 69th FLOOR PLAN
73. 70th FLOOR PLAN
74. 71st FLOOR PLAN
75. 72nd FLOOR PLAN
76. 73rd FLOOR PLAN
77. 74th FLOOR PLAN
78. 75th FLOOR PLAN
79. 76th FLOOR PLAN
80. 77th FLOOR PLAN
81. 78th FLOOR PLAN
82. 79th FLOOR PLAN
83. 80th FLOOR PLAN
84. 81st FLOOR PLAN
85. 82nd FLOOR PLAN
86. 83rd FLOOR PLAN
87. 84th FLOOR PLAN
88. 85th FLOOR PLAN
89. 86th FLOOR PLAN
90. 87th FLOOR PLAN
91. 88th FLOOR PLAN
92. 89th FLOOR PLAN
93. 90th FLOOR PLAN
94. 91st FLOOR PLAN
95. 92nd FLOOR PLAN
96. 93rd FLOOR PLAN
97. 94th FLOOR PLAN
98. 95th FLOOR PLAN
99. 96th FLOOR PLAN
100. 97th FLOOR PLAN
101. 98th FLOOR PLAN
102. 99th FLOOR PLAN
103. 100th FLOOR PLAN
104. 101st FLOOR PLAN
105. 102nd FLOOR PLAN
106. 103rd FLOOR PLAN
107. 104th FLOOR PLAN
108. 105th FLOOR PLAN
109. 106th FLOOR PLAN
110. 107th FLOOR PLAN
111. 108th FLOOR PLAN
112. 109th FLOOR PLAN
113. 110th FLOOR PLAN
114. 111st FLOOR PLAN
115. 112nd FLOOR PLAN
116. 113rd FLOOR PLAN
117. 114th FLOOR PLAN
118. 115th FLOOR PLAN
119. 116th FLOOR PLAN
120. 117th FLOOR PLAN
121. 118th FLOOR PLAN
122. 119th FLOOR PLAN
123. 120th FLOOR PLAN
124. 121st FLOOR PLAN
125. 122nd FLOOR PLAN
126. 123rd FLOOR PLAN
127. 124th FLOOR PLAN
128. 125th FLOOR PLAN
129. 126th FLOOR PLAN
130. 127th FLOOR PLAN
131. 128th FLOOR PLAN
132. 129th FLOOR PLAN
133. 130th FLOOR PLAN
134. 131st FLOOR PLAN
135. 132nd FLOOR PLAN
136. 133rd FLOOR PLAN
137. 134th FLOOR PLAN
138. 135th FLOOR PLAN
139. 136th FLOOR PLAN
140. 137th FLOOR PLAN
141. 138th FLOOR PLAN
142. 139th FLOOR PLAN
143. 140th FLOOR PLAN
144. 141st FLOOR PLAN
145. 142nd FLOOR PLAN
146. 143rd FLOOR PLAN
147. 144th FLOOR PLAN
148. 145th FLOOR PLAN
149. 146th FLOOR PLAN
150. 147th FLOOR PLAN
151. 148th FLOOR PLAN
152. 149th FLOOR PLAN
153. 150th FLOOR PLAN
154. 151st FLOOR PLAN
155. 152nd FLOOR PLAN
156. 153rd FLOOR PLAN
157. 154th FLOOR PLAN
158. 155th FLOOR PLAN
159. 156th FLOOR PLAN
160. 157th FLOOR PLAN
161. 158th FLOOR PLAN
162. 159th FLOOR PLAN
163. 160th FLOOR PLAN
164. 161st FLOOR PLAN
165. 162nd FLOOR PLAN
166. 163rd FLOOR PLAN
167. 164th FLOOR PLAN
168. 165th FLOOR PLAN
169. 166th FLOOR PLAN
170. 167th FLOOR PLAN
171. 168th FLOOR PLAN
172. 169th FLOOR PLAN
173. 170th FLOOR PLAN
174. 171st FLOOR PLAN
175. 172nd FLOOR PLAN
176. 173rd FLOOR PLAN
177. 174th FLOOR PLAN
178. 175th FLOOR PLAN
179. 176th FLOOR PLAN
180. 177th FLOOR PLAN
181. 178th FLOOR PLAN
182. 179th FLOOR PLAN
183. 180th FLOOR PLAN
184. 181st FLOOR PLAN
185. 182nd FLOOR PLAN
186. 183rd FLOOR PLAN
187. 184th FLOOR PLAN
188. 185th FLOOR PLAN
189. 186th FLOOR PLAN
190. 187th FLOOR PLAN
191. 188th FLOOR PLAN
192. 189th FLOOR PLAN
193. 190th FLOOR PLAN
194. 191st FLOOR PLAN
195. 192nd FLOOR PLAN
196. 193rd FLOOR PLAN
197. 194th FLOOR PLAN
198. 195th FLOOR PLAN
199. 196th FLOOR PLAN
200. 197th FLOOR PLAN
201. 198th FLOOR PLAN
202. 199th FLOOR PLAN
203. 200th FLOOR PLAN
204. 201st FLOOR PLAN
205. 202nd FLOOR PLAN
206. 203rd FLOOR PLAN
207. 204th FLOOR PLAN
208. 205th FLOOR PLAN
209. 206th FLOOR PLAN
210. 207th FLOOR PLAN
211. 208th FLOOR PLAN
212. 209th FLOOR PLAN
213. 210th FLOOR PLAN
214. 211st FLOOR PLAN
215. 212nd FLOOR PLAN
216. 213rd FLOOR PLAN
217. 214th FLOOR PLAN
218. 215th FLOOR PLAN
219. 216th FLOOR PLAN
220. 217th FLOOR PLAN
221. 218th FLOOR PLAN
222. 219th FLOOR PLAN
223. 220th FLOOR PLAN
224. 221st FLOOR PLAN
225. 222nd FLOOR PLAN
226. 223rd FLOOR PLAN
227. 224th FLOOR PLAN
228. 225th FLOOR PLAN
229. 226th FLOOR PLAN
230. 227th FLOOR PLAN
231. 228th FLOOR PLAN
232. 229th FLOOR PLAN
233. 230th FLOOR PLAN
234. 231st FLOOR PLAN
235. 232nd FLOOR PLAN
236. 233rd FLOOR PLAN
237. 234th FLOOR PLAN
238. 235th FLOOR PLAN
239. 236th FLOOR PLAN
240. 237th FLOOR PLAN
241. 238th FLOOR PLAN
242. 239th FLOOR PLAN
243. 240th FLOOR PLAN
244. 241st FLOOR PLAN
245. 242nd FLOOR PLAN
246. 243rd FLOOR PLAN
247. 244th FLOOR PLAN
248. 245th FLOOR PLAN
249. 246th FLOOR PLAN
250. 247th FLOOR PLAN
251. 248th FLOOR PLAN
252. 249th FLOOR PLAN
253. 250th FLOOR PLAN
254. 251st FLOOR PLAN
255. 252nd FLOOR PLAN
256. 253rd FLOOR PLAN
257. 254th FLOOR PLAN
258. 255th FLOOR PLAN
259. 256th FLOOR PLAN
260. 257th FLOOR PLAN
261. 258th FLOOR PLAN
262. 259th FLOOR PLAN
263. 260th FLOOR PLAN
264. 261st FLOOR PLAN
265. 262nd FLOOR PLAN
266. 263rd FLOOR PLAN
267. 264th FLOOR PLAN
268. 265th FLOOR PLAN
269. 266th FLOOR PLAN
270. 267th FLOOR PLAN
271. 268th FLOOR PLAN
272. 269th FLOOR PLAN
273. 270th FLOOR PLAN
274. 271st FLOOR PLAN
275. 272nd FLOOR PLAN
276. 273rd FLOOR PLAN
277. 274th FLOOR PLAN
278. 275th FLOOR PLAN
279. 276th FLOOR PLAN
280. 277th FLOOR PLAN
281. 278th FLOOR PLAN
282. 279th FLOOR PLAN
283. 280th FLOOR PLAN
284. 281st FLOOR PLAN
285. 282nd FLOOR PLAN
286. 283rd FLOOR PLAN
287. 284th FLOOR PLAN
288. 285th FLOOR PLAN
289. 286th FLOOR PLAN
290. 287th FLOOR PLAN
291. 288th FLOOR PLAN
292. 289th FLOOR PLAN
293. 290th FLOOR PLAN
294. 291st FLOOR PLAN
295. 292nd FLOOR PLAN
296. 293rd FLOOR PLAN
297. 294th FLOOR PLAN
298. 295th FLOOR PLAN
299. 296th FLOOR PLAN
300. 297th FLOOR PLAN
301. 298th FLOOR PLAN
302. 299th FLOOR PLAN
303. 300th FLOOR PLAN
304. 301st FLOOR PLAN
305. 302nd FLOOR PLAN
306. 303rd FLOOR PLAN
307. 304th FLOOR PLAN
308. 305th FLOOR PLAN
309. 306th FLOOR PLAN
310. 307th FLOOR PLAN
311. 308th FLOOR PLAN
312. 309th FLOOR PLAN
313. 310th FLOOR PLAN
314. 311st FLOOR PLAN
315. 312nd FLOOR PLAN
316. 313rd FLOOR PLAN
317. 314th FLOOR PLAN
318. 315th FLOOR PLAN
319. 316th FLOOR PLAN
320. 317th FLOOR PLAN
321. 318th FLOOR PLAN
322. 319th FLOOR PLAN
323. 320th FLOOR PLAN
324. 321st FLOOR PLAN
325. 322nd FLOOR PLAN
326. 323rd FLOOR PLAN
327. 324th FLOOR PLAN
328. 325th FLOOR PLAN
329. 326th FLOOR PLAN
330. 327th FLOOR PLAN
331. 328th FLOOR PLAN
332. 329th FLOOR PLAN
333. 330th FLOOR PLAN
334. 331st FLOOR PLAN
335. 332nd FLOOR PLAN
336. 333rd FLOOR PLAN
337. 334th FLOOR PLAN
338. 335th FLOOR PLAN
339. 336th FLOOR PLAN
340. 337th FLOOR PLAN
341. 338th FLOOR PLAN
342. 339th FLOOR PLAN
343. 340th FLOOR PLAN
344. 341st FLOOR PLAN
345. 342nd FLOOR PLAN
346. 343rd FLOOR PLAN
347. 344th FLOOR PLAN
348. 345th FLOOR PLAN
349. 346th FLOOR PLAN
350. 347th FLOOR PLAN
351. 348th FLOOR PLAN
352. 349th FLOOR PLAN
353. 350th FLOOR PLAN
354. 351st FLOOR PLAN
355. 352nd FLOOR PLAN
356. 353rd FLOOR PLAN
357. 354th FLOOR PLAN
358. 355th FLOOR PLAN
359. 356th FLOOR PLAN
360. 357th FLOOR PLAN
361. 358th FLOOR PLAN
362. 359th FLOOR PLAN
363. 360th FLOOR PLAN
364. 361st FLOOR PLAN
365. 362nd FLOOR PLAN
366. 363rd FLOOR PLAN
367. 364th FLOOR PLAN
368. 365th FLOOR PLAN
369. 366th FLOOR PLAN
370. 367th FLOOR PLAN
371. 368th FLOOR PLAN
372. 369th FLOOR PLAN
373. 370th FLOOR PLAN
374. 371st FLOOR PLAN
375. 372nd FLOOR PLAN
376. 373rd FLOOR PLAN
377. 374th FLOOR PLAN
378. 375th FLOOR PLAN
379. 376th FLOOR PLAN
380. 377th FLOOR PLAN
381. 378th FLOOR PLAN
382. 379th FLOOR PLAN
383. 380th FLOOR PLAN
384. 381st FLOOR PLAN
385. 382nd FLOOR PLAN
386. 383rd FLOOR PLAN
387. 384th FLOOR PLAN
388. 385th FLOOR PLAN
389. 386th FLOOR PLAN
390. 387th FLOOR PLAN
391. 388th FLOOR PLAN
392. 389th FLOOR PLAN
393. 390th FLOOR PLAN
394. 391st FLOOR PLAN
395. 392nd FLOOR PLAN
396. 393rd FLOOR PLAN
397. 394th FLOOR PLAN
398. 395th FLOOR PLAN
399. 396th FLOOR PLAN
400. 397th FLOOR PLAN
401. 398th FLOOR PLAN
402. 399th FLOOR PLAN
403. 400th FLOOR PLAN
404. 401st FLOOR PLAN
405. 402nd FLOOR PLAN
406. 403rd FLOOR PLAN
407. 404th FLOOR PLAN
408. 405th FLOOR PLAN
409. 406th FLOOR PLAN
410. 407th FLOOR PLAN
411. 408th FLOOR PLAN
412. 409th FLOOR PLAN
413. 410th FLOOR PLAN
414. 411st FLOOR PLAN
415. 412nd FLOOR PLAN
416. 413rd FLOOR PLAN
417. 414th FLOOR PLAN
418. 415th FLOOR PLAN
419. 416th FLOOR PLAN
420. 417th FLOOR PLAN
421. 418th FLOOR PLAN
422. 419th FLOOR PLAN
423. 420th FLOOR PLAN
424. 421st FLOOR PLAN
425. 422nd FLOOR PLAN
426. 423rd FLOOR PLAN
427. 424th FLOOR PLAN
428. 425th FLOOR PLAN
429. 426th FLOOR PLAN
430. 427th FLOOR PLAN
431. 428th FLOOR PLAN
432. 429th FLOOR PLAN
433. 430th FLOOR PLAN
434. 431st FLOOR PLAN
435. 432nd FLOOR PLAN
436. 433rd FLOOR PLAN
437. 434th FLOOR PLAN
438. 435th FLOOR PLAN
439. 436th FLOOR PLAN
440. 437th FLOOR PLAN

POOR INSTRUMENT FILED

CONDOMINIUM MAP 1A

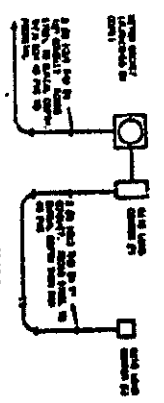
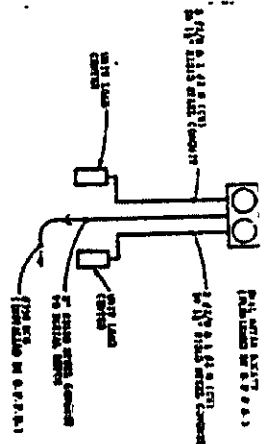
MAP 1A
SCALE 1/8" = 1'-0"
HABADA HEIGHTS
CONDOMINIUM LAYOUT



POOR INSTRUMENT FILED

AS PAW N 2344 100' N

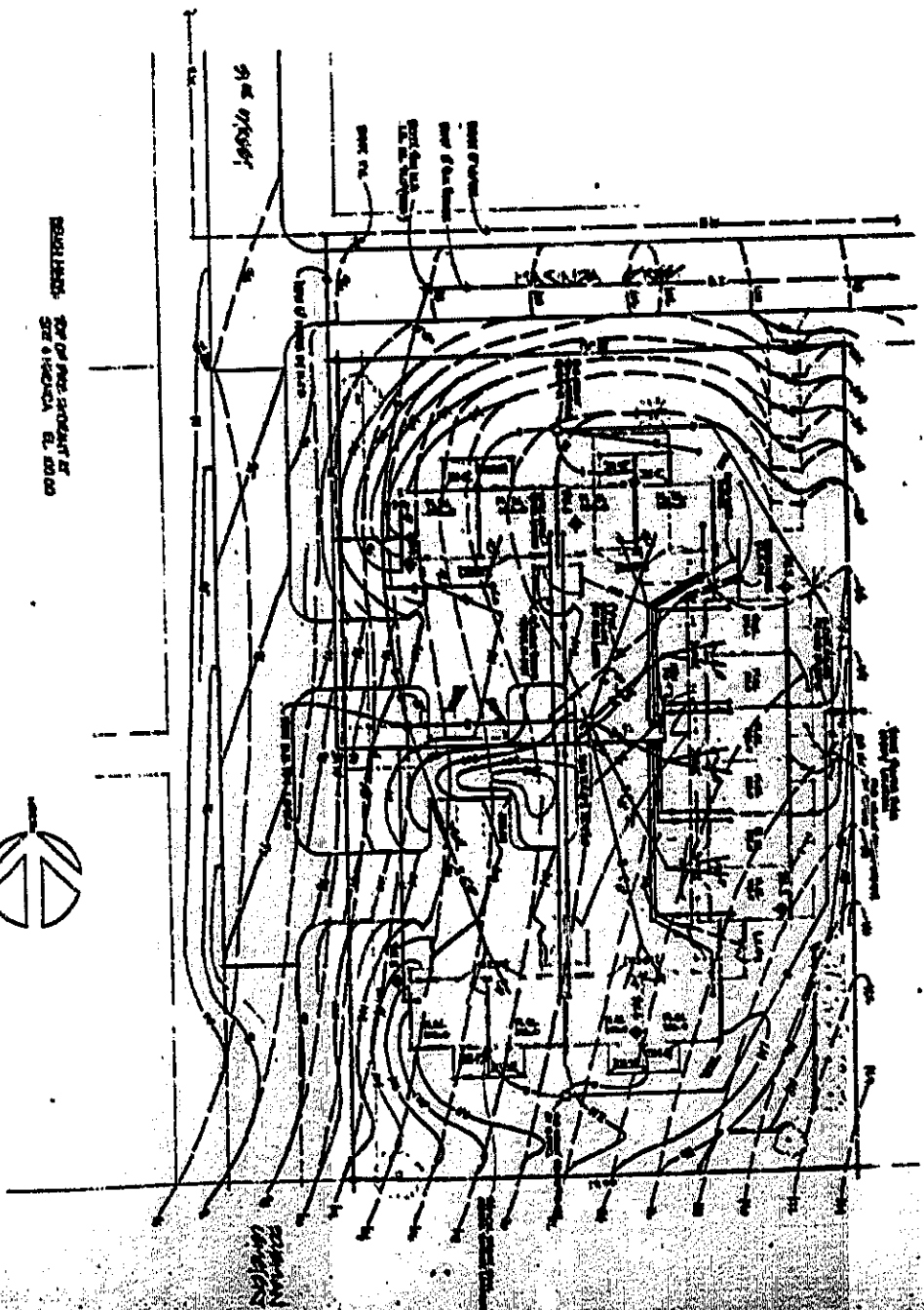
UNIT 'A' FLOOR PLANS 3



POWER RISER DIAGRAMS

- NOTE: ALL WORK SHALL BE IN ACCORDANCE WITH THE CITY OF LOS ANGELES ELECTRICAL CODE, 2014 EDITION, AND THE NATIONAL ELECTRICAL CODE, 2011 EDITION, AS AMENDED.
- 1. ALL WIRING SHALL BE IN ACCORDANCE WITH THE CITY OF LOS ANGELES ELECTRICAL CODE, 2014 EDITION, AND THE NATIONAL ELECTRICAL CODE, 2011 EDITION, AS AMENDED.
 - 2. ALL WIRING SHALL BE IN ACCORDANCE WITH THE CITY OF LOS ANGELES ELECTRICAL CODE, 2014 EDITION, AND THE NATIONAL ELECTRICAL CODE, 2011 EDITION, AS AMENDED.
 - 3. ALL WIRING SHALL BE IN ACCORDANCE WITH THE CITY OF LOS ANGELES ELECTRICAL CODE, 2014 EDITION, AND THE NATIONAL ELECTRICAL CODE, 2011 EDITION, AS AMENDED.
 - 4. ALL WIRING SHALL BE IN ACCORDANCE WITH THE CITY OF LOS ANGELES ELECTRICAL CODE, 2014 EDITION, AND THE NATIONAL ELECTRICAL CODE, 2011 EDITION, AS AMENDED.
 - 5. ALL WIRING SHALL BE IN ACCORDANCE WITH THE CITY OF LOS ANGELES ELECTRICAL CODE, 2014 EDITION, AND THE NATIONAL ELECTRICAL CODE, 2011 EDITION, AS AMENDED.
 - 6. ALL WIRING SHALL BE IN ACCORDANCE WITH THE CITY OF LOS ANGELES ELECTRICAL CODE, 2014 EDITION, AND THE NATIONAL ELECTRICAL CODE, 2011 EDITION, AS AMENDED.
 - 7. ALL WIRING SHALL BE IN ACCORDANCE WITH THE CITY OF LOS ANGELES ELECTRICAL CODE, 2014 EDITION, AND THE NATIONAL ELECTRICAL CODE, 2011 EDITION, AS AMENDED.
 - 8. ALL WIRING SHALL BE IN ACCORDANCE WITH THE CITY OF LOS ANGELES ELECTRICAL CODE, 2014 EDITION, AND THE NATIONAL ELECTRICAL CODE, 2011 EDITION, AS AMENDED.
 - 9. ALL WIRING SHALL BE IN ACCORDANCE WITH THE CITY OF LOS ANGELES ELECTRICAL CODE, 2014 EDITION, AND THE NATIONAL ELECTRICAL CODE, 2011 EDITION, AS AMENDED.
 - 10. ALL WIRING SHALL BE IN ACCORDANCE WITH THE CITY OF LOS ANGELES ELECTRICAL CODE, 2014 EDITION, AND THE NATIONAL ELECTRICAL CODE, 2011 EDITION, AS AMENDED.

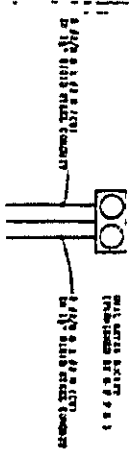
LOAD CENTER SCHEDULES



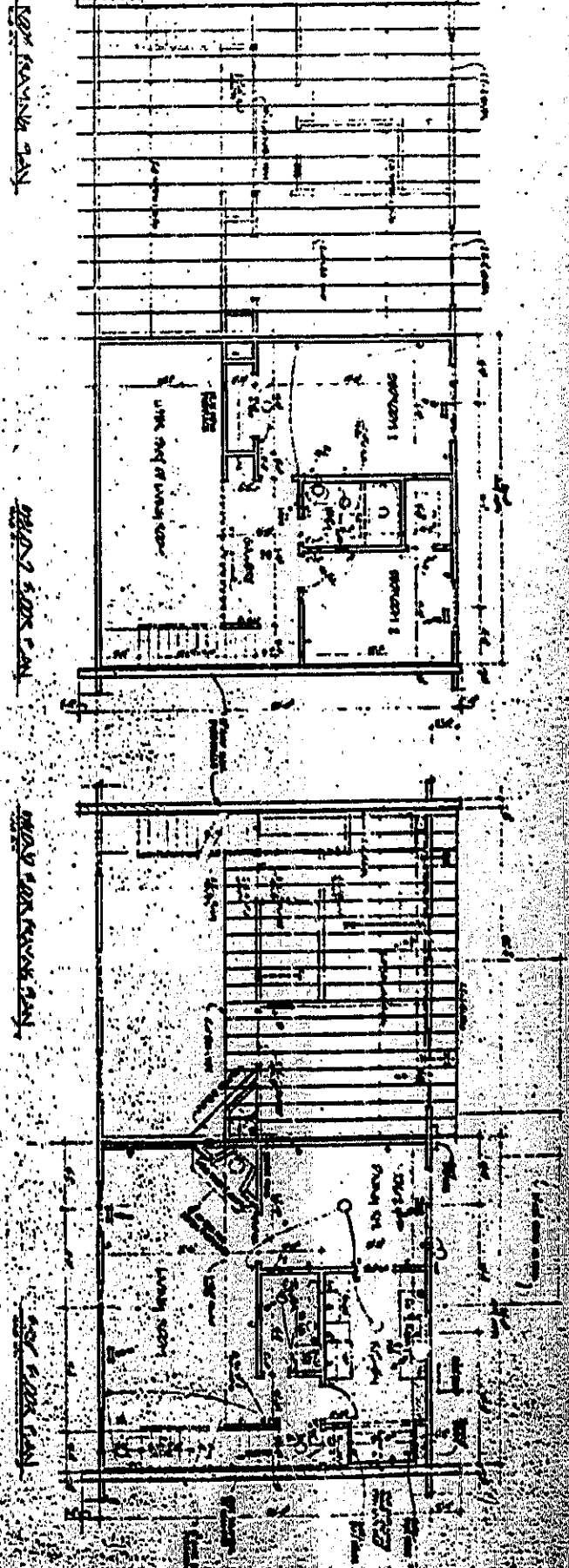
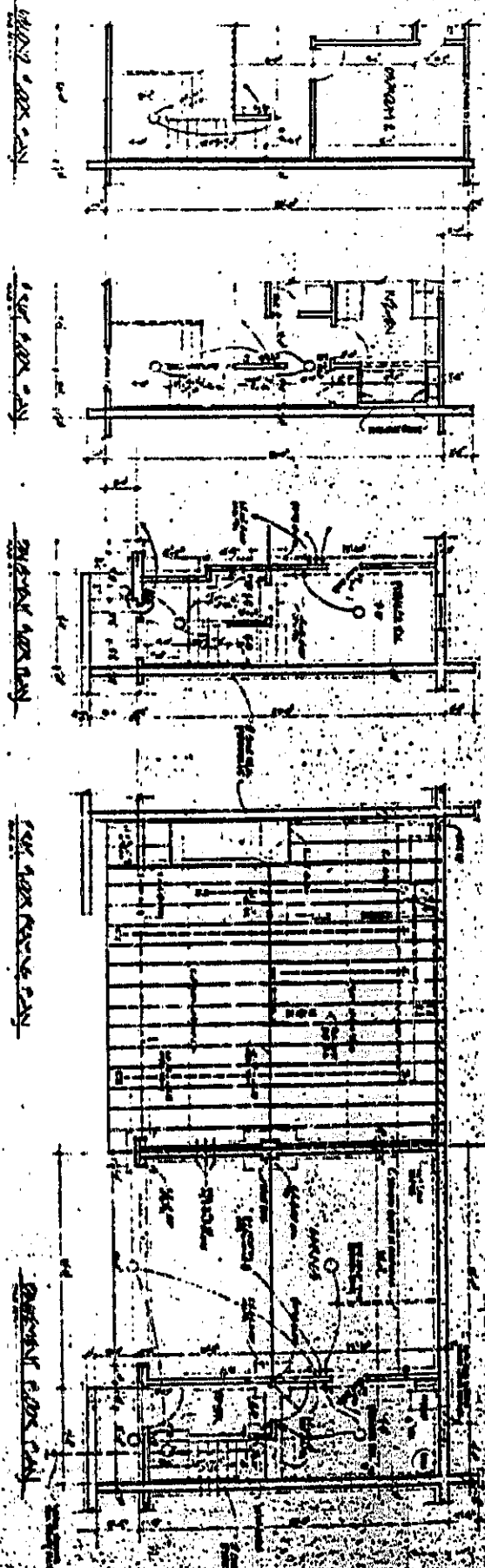
UTILITY & GRADING PLAN 2

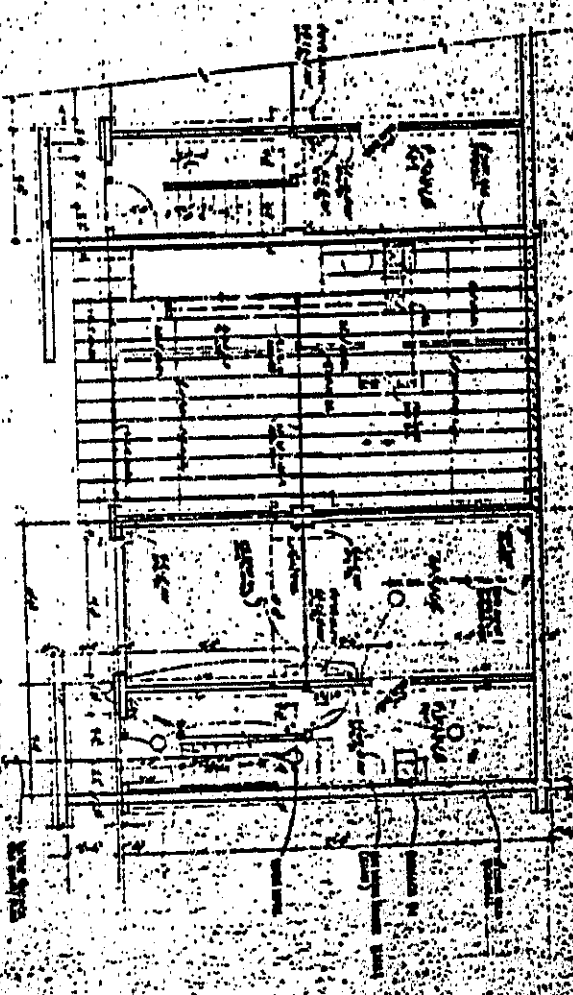
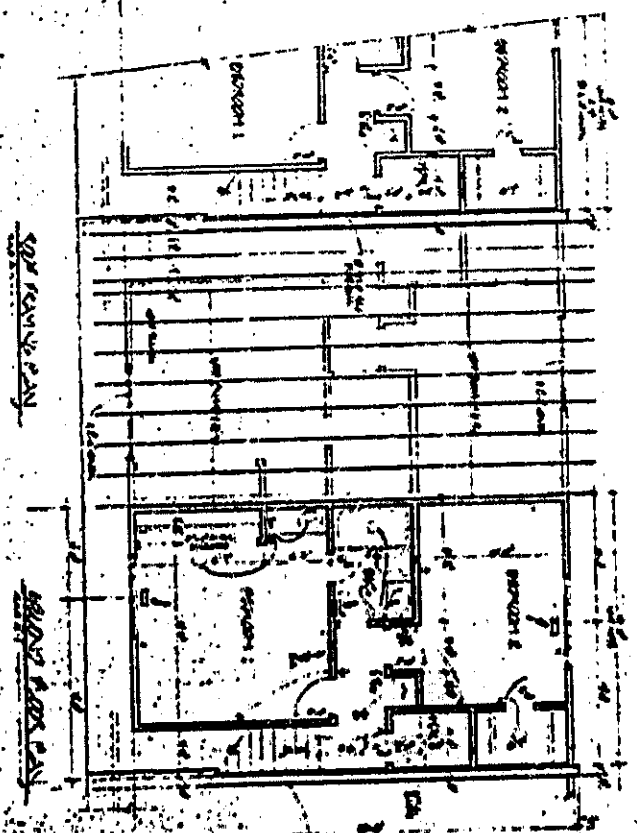
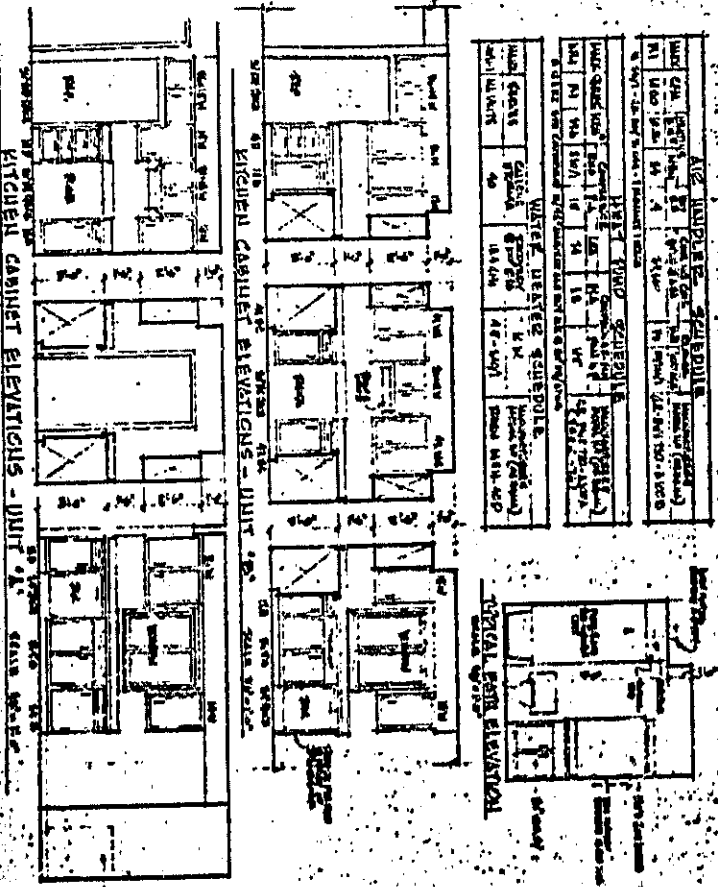
POOR INSTRUMENT FILED

EU



UNIT A FLOOR PLANS 3

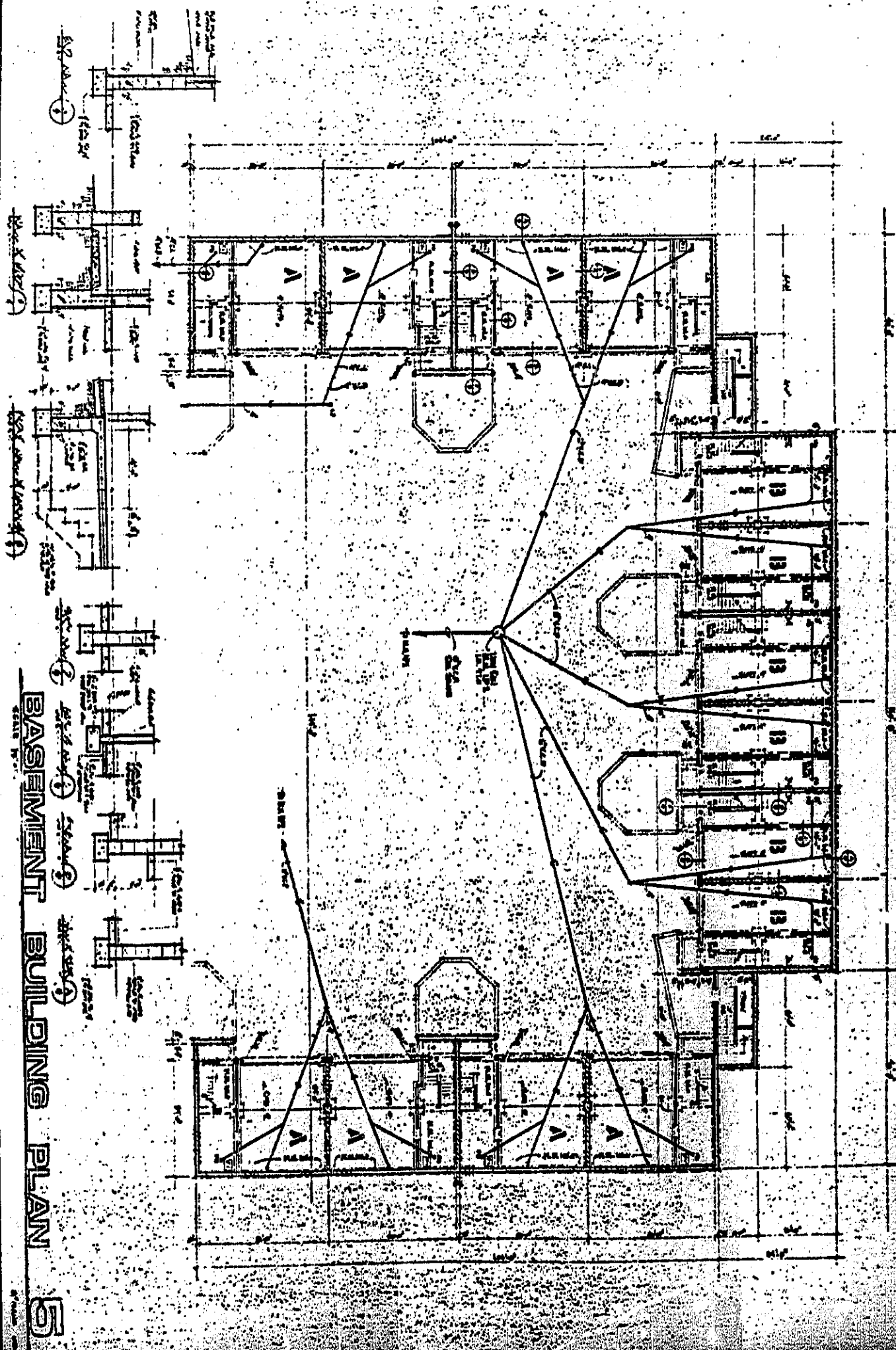




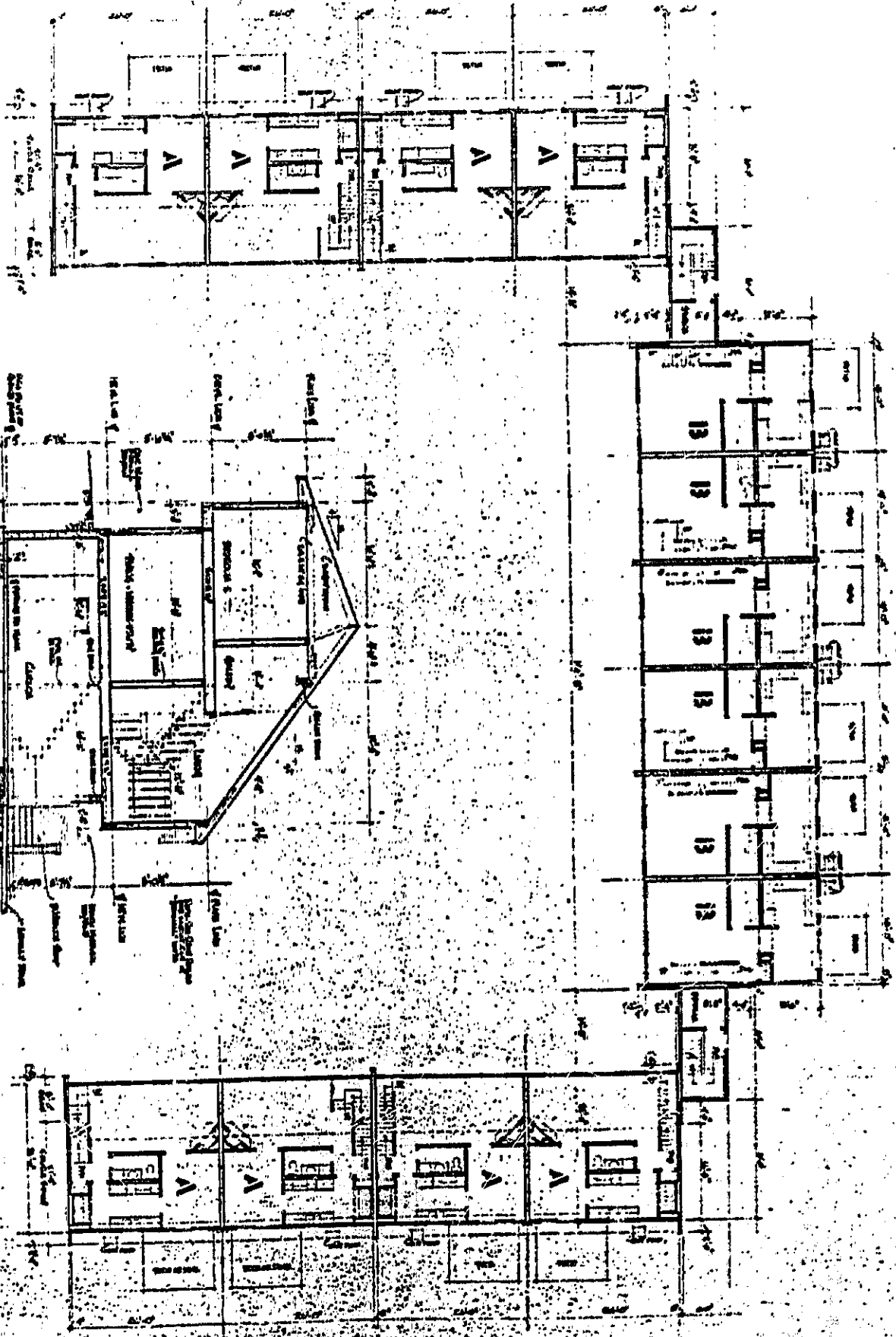
UNIT 'B' FLOOR PLANS 4

BASEMENT BUILDING PLAN 5

LED



BASMENT BUILDING PLAN



TYPICAL GROSS SECTION - UNIT 7

FIRST FLOOR BUILDING PLAN 6

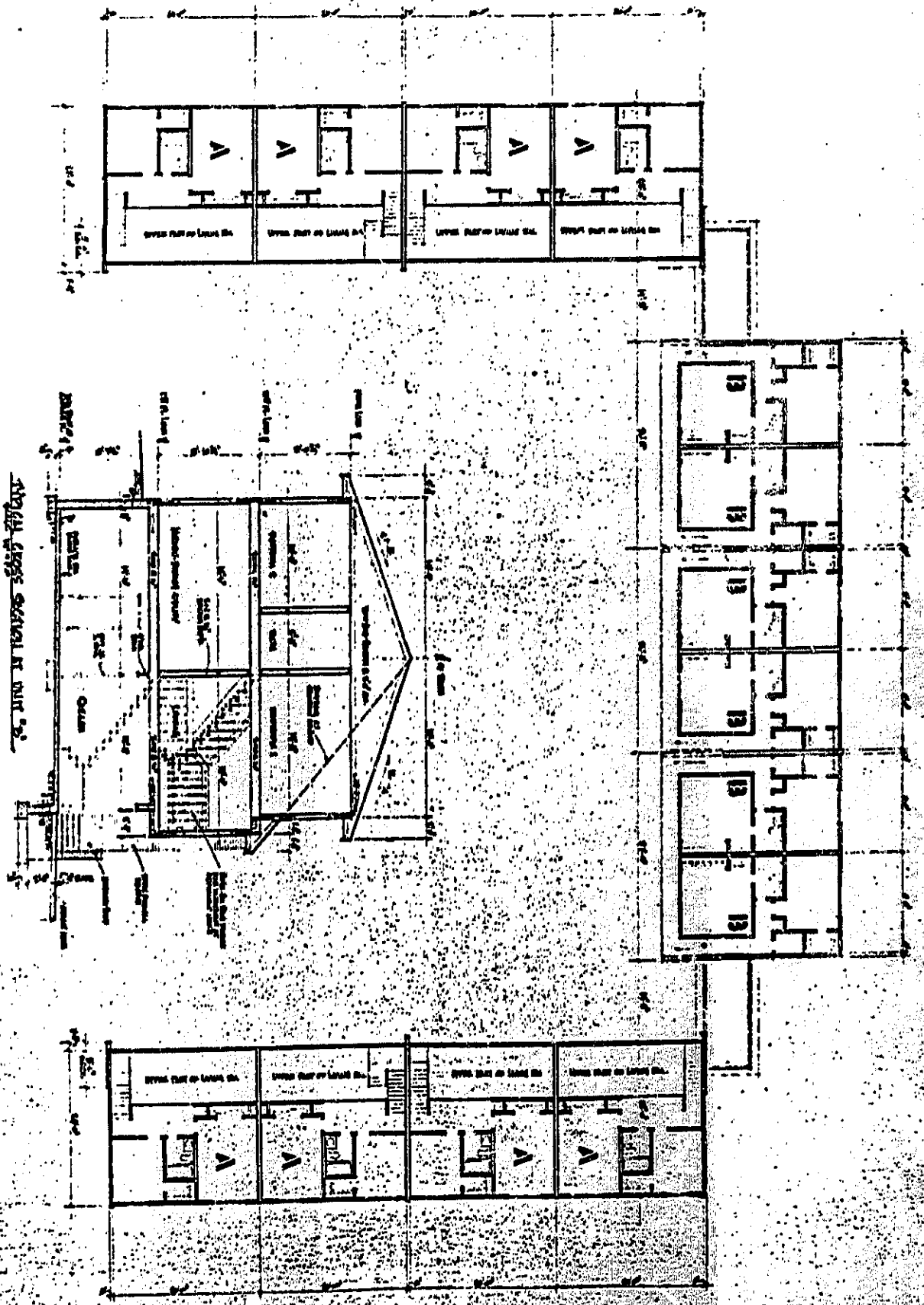
FIRST FLOOR BUILDING PLAN 7

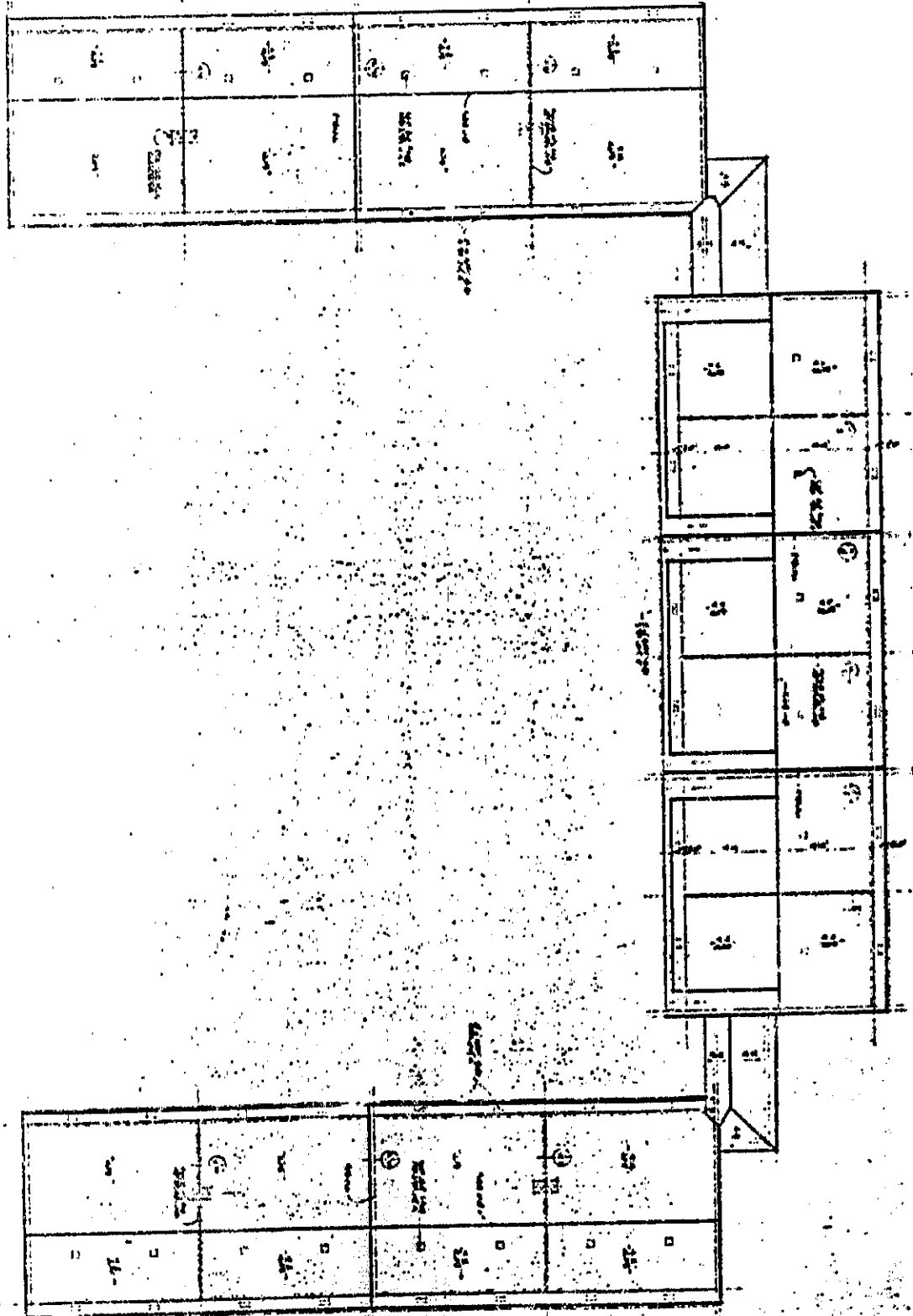
FILED

POOR INSTRUMENT FILED

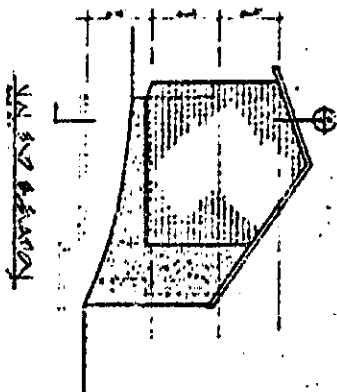
BOOK 1715 PAGE 479

SECOND FLOOR BUILDING PLAN

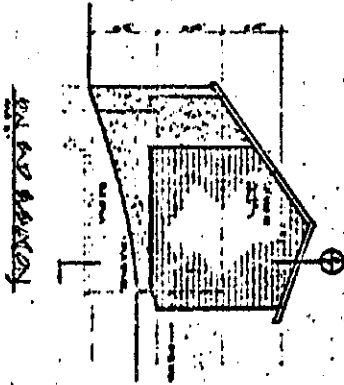




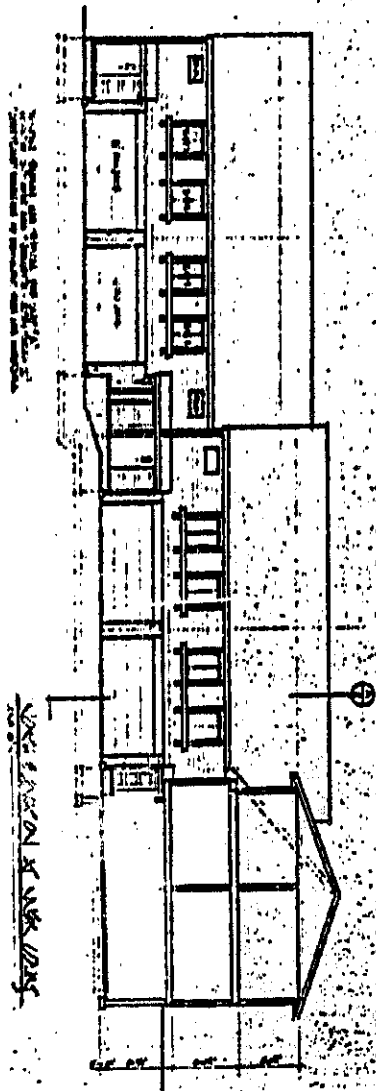
BUILDING ROOF PLAN 8



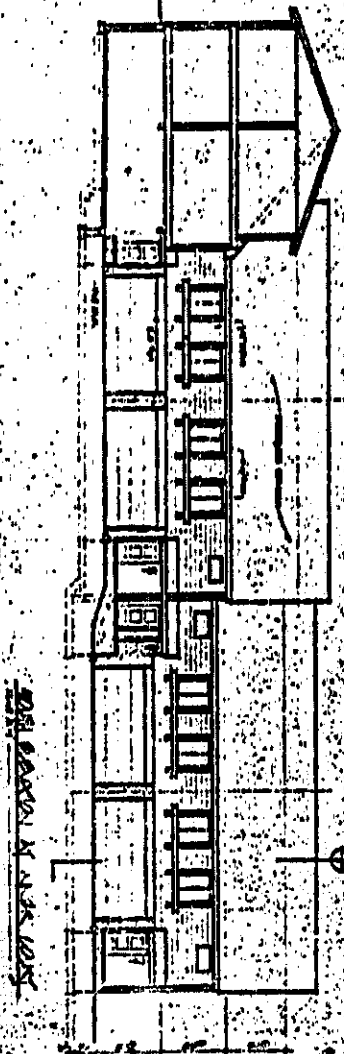
WEST ELEVATION



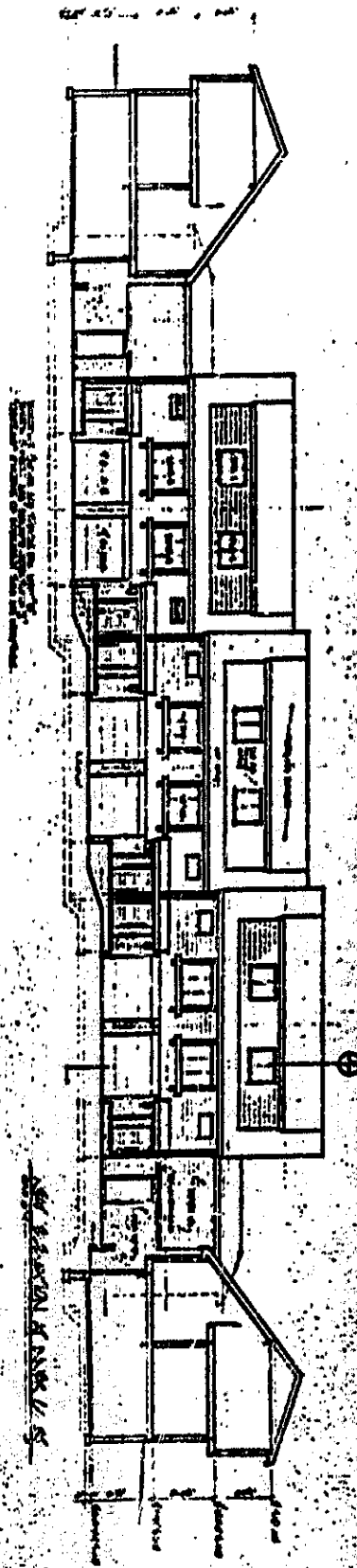
EAST ELEVATION



WEST ELEVATION



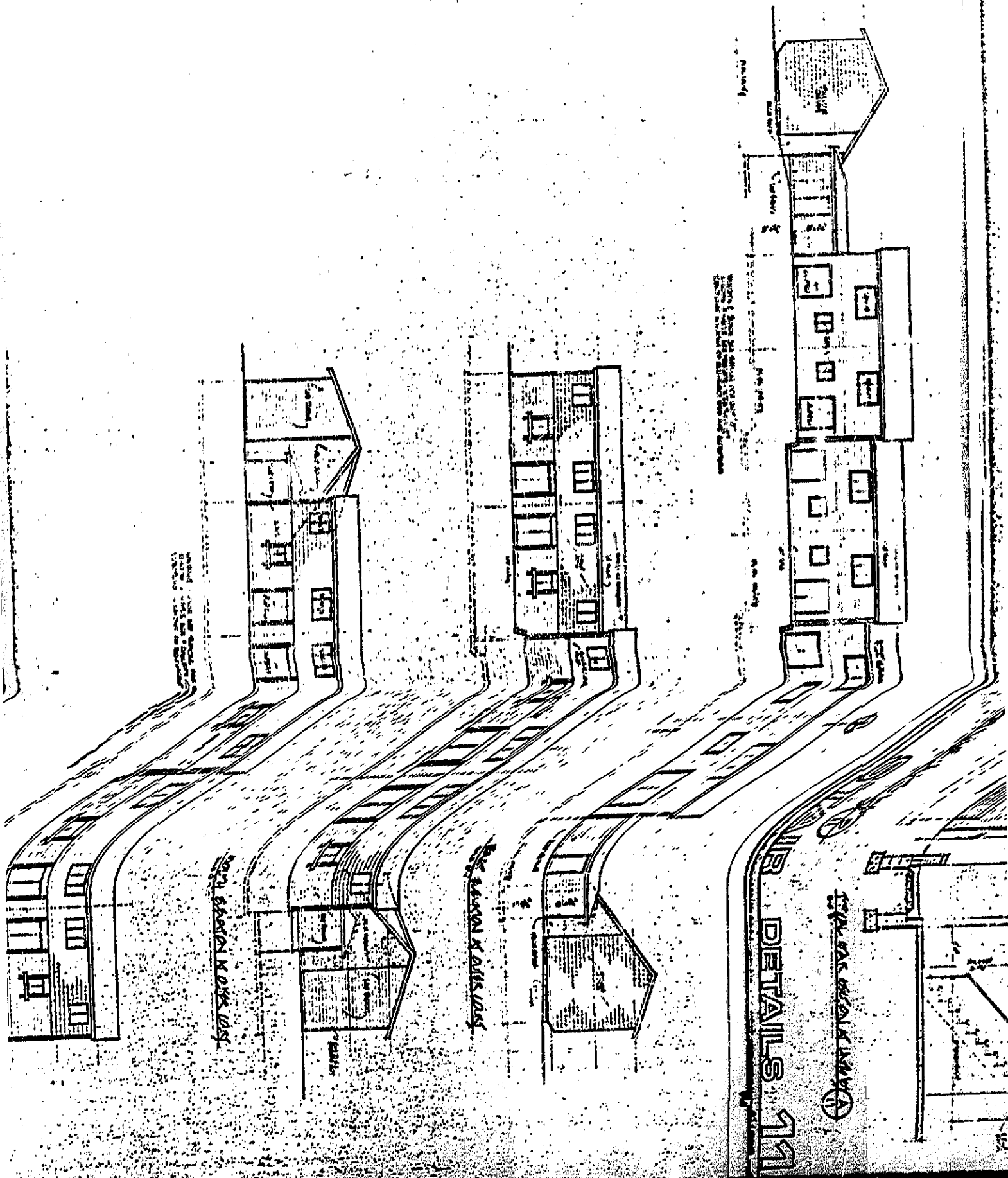
EAST ELEVATION



WEST ELEVATION

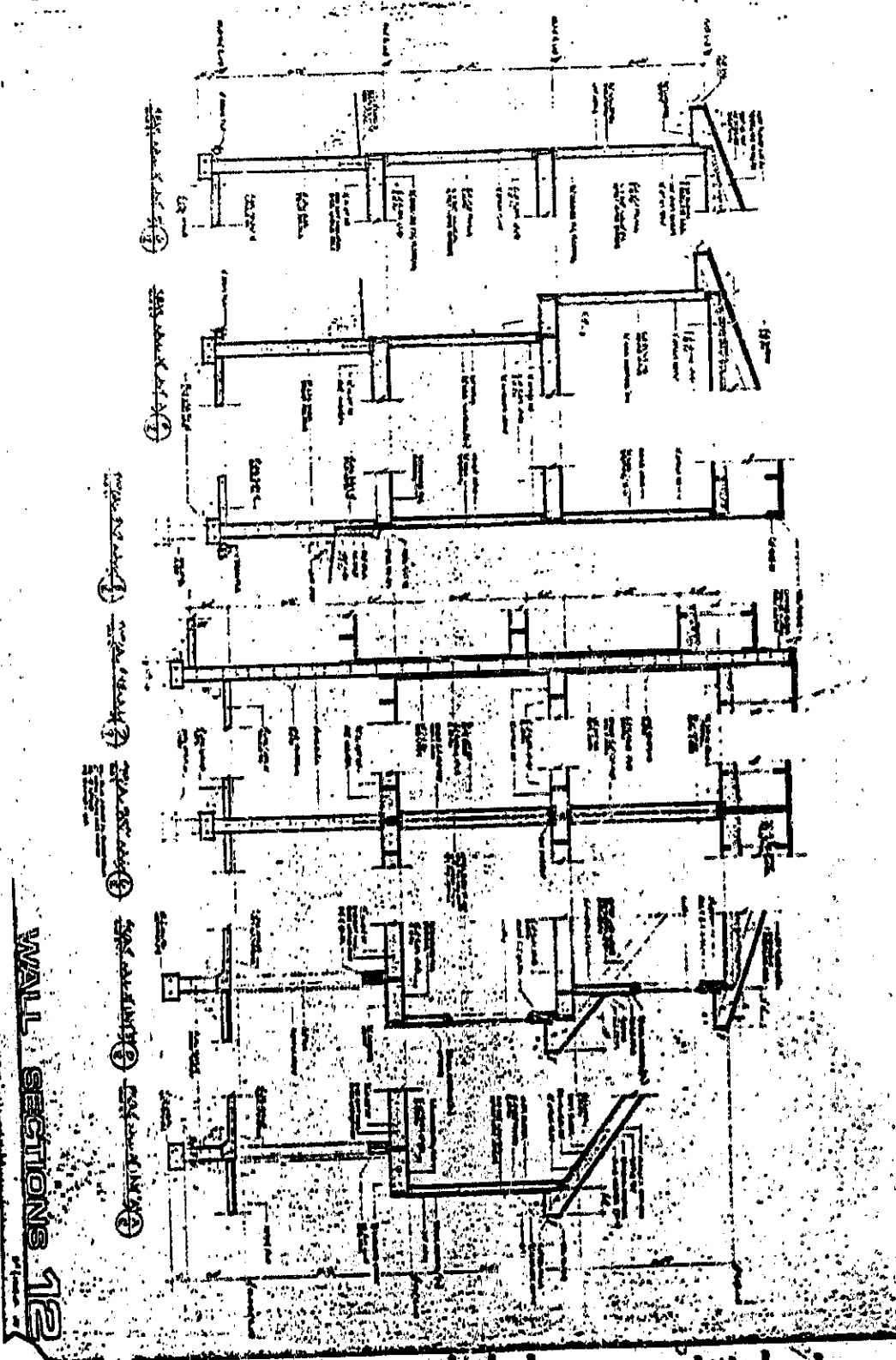
ELEVATIONS

9



POOR INSTRUMENT FILED

BOOK 1715 PAGE 484



WALL SECTIONS 1-12

RECEIVED
 1988 OCT -7 AM 10:25
 C. HAROLD OSTLER
 REGISTER OF DEEDS
 DOUGLAS COUNTY, NEBR.

Sheet 1715
 435
 of 436

Pro 262.00
 In 2000
 88-4411-1024
 88-25A

Call 9 210 96 OK
 #204

24 Rev