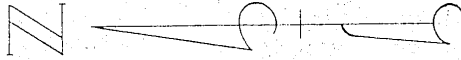


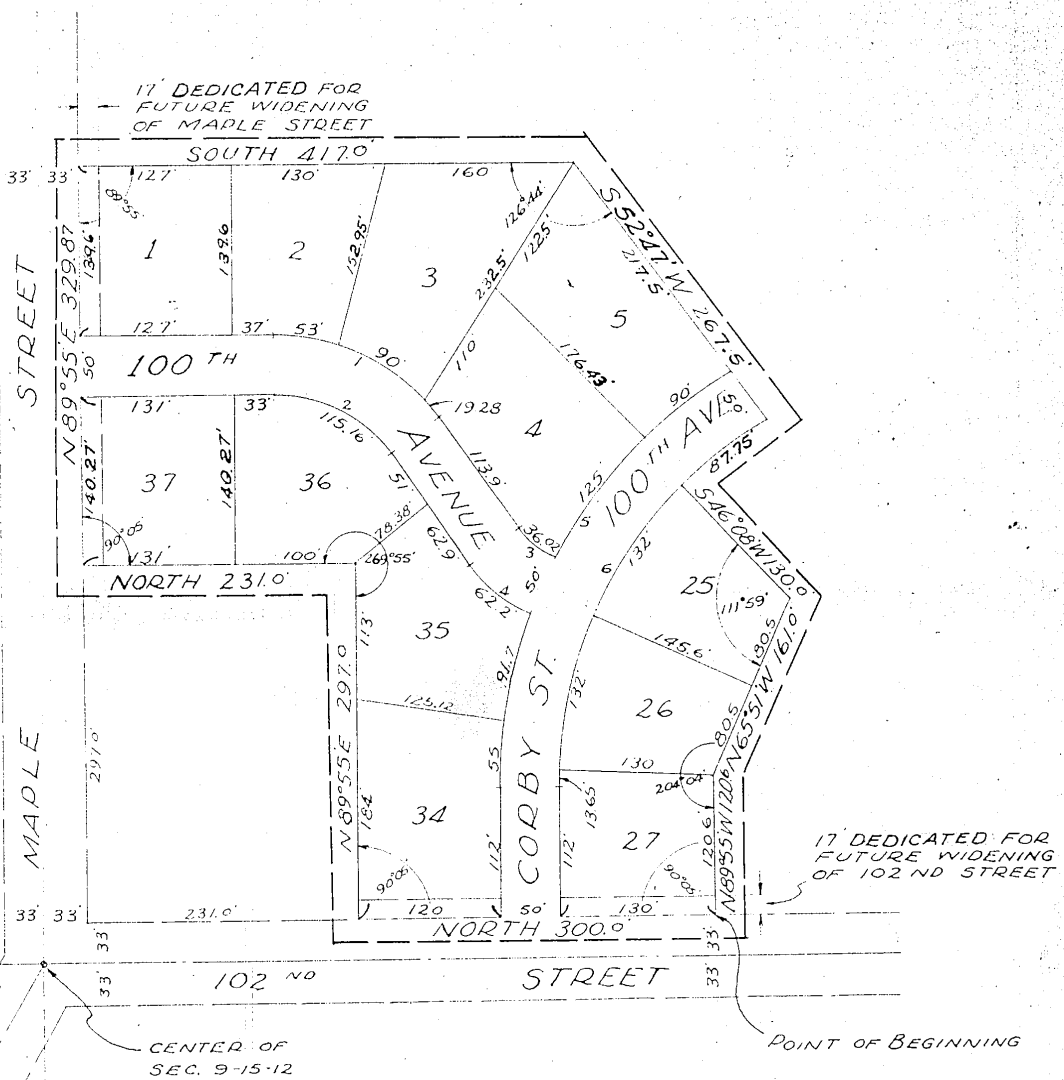
# MADLE HILL

(LOTS 1, 2, 3, 4, 5, 25, 26, 27, 34, 35, 36 & 37)

A SUBDIVISION  
 LOCATED IN THE NW 1/4 OF THE SE 1/4,  
 SECTION 9, T15N, R12E  
 OF THE 6TH P.M., DOUGLAS COUNTY, NEBRASKA



SCALE 1"=100'



CURVE DATA

No. 1	No. 2	No. 3	No. 4	No. 5	No. 6
$\Delta = 54^{\circ}00'$	$\Delta = 54^{\circ}00'$	$\Delta = 30^{\circ}00'$	$\Delta = 30^{\circ}00'$	$R = 395$	$R = 345$
$R = 172.19'$	$R = 122.19'$	$R = 68.80'$	$R = 118.80'$	$D = 14.505'$	$D = 16.607'$
$D = 33.275'$	$D = 46.891'$	$D = 83.279'$	$D = 48.229'$		
$T = 87.74'$	$T = 62.26'$	$T = 18.43'$	$T = 31.83'$		
$L = 162.28'$	$L = 115.16'$	$L = 36.02'$	$L = 62.20'$		

# ACKNOWLEDGEMENT OF GRADING

I HEREBY CERTIFY THAT ALL STREETS AS SHOWN ON THIS PLAT HAVE BEEN GRADED TO THE DESIGN APPROVED BY THE CITY ENGINEER.

DATE: Sept 26, 1958

E. M. Gollehon  
REGISTERED ENGINEER E-1661

# SURVEYOR'S CERTIFICATE

I HEREBY CERTIFY THAT I HAVE ACCURATELY SURVEYED AND PLACED IRON PIPE AT THE CORNERS OF ALL LOTS, STREETS, ANGLE POINTS AND THE ENDS OF ALL CURVES IN MAPLE HILL <sup>(Lots 1, 2, 3, 4, 5, 25, 26, 27, 34, 35, 36, 37)</sup> SAID ADDITION IS LOCATED IN THE NW 1/4, SE 1/4, SECTION 9, TOWNSHIP 15 NORTH, RANGE 12 EAST OF THE 6TH PRINCIPAL MERIDIAN IN DOUGLAS COUNTY, NEBRASKA AND BEING MORE PARTICULARLY DESCRIBED AS FOLLOWS:

BEGINNING AT A POINT 33' EAST AND 564' SOUTH (ASSUMED BEARING) OF THE CENTER OF SECTION 9-15-12; THENCE NORTH A DISTANCE OF 300.0'; N89°55'E A DISTANCE OF 297.0'; THENCE NORTH A DISTANCE OF 231.0'; THENCE N89°55'E ALONG THE SOUTH R.O.W. <sup>LINE</sup> OF MAPLE STREET A DISTANCE OF 329.87'; THENCE SOUTH A DISTANCE OF 417.0'; THENCE S52°47'W A DISTANCE OF 267.5' TO A POINT ON A 16.608° CURVE; THENCE NORTHWESTERLY ALONG SAID 16.608° CURVE TO THE LEFT A DISTANCE OF 87.75'; THENCE S46°08'W A DISTANCE OF 130.0'; THENCE N65°51'W A DISTANCE OF 161.0'; THENCE N89°55'W A DISTANCE OF 120.6' TO THE POINT OF BEGINNING.

DATE: July 21, 1958

E. M. GOLLEHON, CONSULTING ENGINEER

William A. Zell LS-125  
REGISTERED LAND SURVEYOR

### DEDICATION

AND LAURA E. PETERSON, HUSBAND AND WIFE  
KNOW ALL MEN BY THESE PRESENTS: THAT WE, LLOYD M. PETERSON, BEING SOLE OWNERS AND PROPRIETORS OF THE LAND DESCRIBED IN THE SURVEYOR'S CERTIFICATE AND EMBRACED WITHIN THIS PLAT HAVE CAUSED THE SAME TO BE SUBDIVIDED INTO LOTS AND STREETS, SAID SUBDIVISION TO BE HEREAFTER KNOWN AS MAPLE HILL (LOTS 1, 2, 3, 4, 5, 25, 26, 27, 34, 35, 36, 37) AND WE HEREBY RATIFY AND APPROVE OF THE DISPOSITION OF OUR PROPERTY AS SHOWN ON THIS PLAT, AND WE HEREBY DEDICATE TO THE PUBLIC FOR PUBLIC USE THE STREETS AND AVENUES AS SHOWN HEREIN.

IN WITNESS WHEREOF, WE DO HEREUNTO SET OUR HANDS THIS 20<sup>th</sup> DAY OF June A.D. 1958.

Laura E. Peterson      Lloyd M. Peterson  
LAURA E. PETERSON      LLOYD M. PETERSON

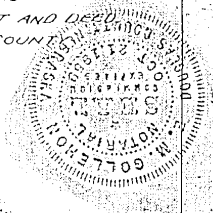
### ACKNOWLEDGEMENT OF NOTARY

STATE OF NEBRASKA }  
COUNTY OF DOUGLAS } SS

ON THIS 20<sup>th</sup> DAY OF June A.D. 1958, BEFORE ME, A NOTARY PUBLIC DULY COMMISSIONED AND QUALIFIED IN AND FOR SAID COUNTY, AND LAURA E. PETERSON, HUSBAND AND WIFE WHO ARE PERSONALLY KNOWN TO ME TO BE THE IDENTICAL PERSONS WHOSE NAMES ARE AFFIXED TO THE ABOVE DEDICATION ON THIS PLAT AS OWNERS OF THE PROPERTY DESCRIBED IN THE SURVEYOR'S CERTIFICATE ON THIS PLAT AND WHO ACKNOWLEDGED THE SIGNING OF SAID DEDICATION TO BE THEIR VOLUNTARY ACT AND DEED, I WITNESS MY HAND AND OFFICIAL SEAL AT OMAHA, NEBRASKA, IN SAID COUNTY THE DATE LAST AFORESAID.

E. M. Goelle  
NOTARY PUBLIC

MY COMMISSION EXPIRES ON THE 21<sup>st</sup> DAY OF October 1959.



### COUNTY TREASURER'S CERTIFICATE

THIS IS TO CERTIFY THAT I FIND NO REGULAR OR SPECIAL TAXES DUE OR DELINQUENT AGAINST THE PROPERTY DESCRIBED IN THE SURVEYOR'S CERTIFICATE AND EMBRACED IN THIS PLAT AS SHOWN BY THE RECORDS OF THIS OFFICE.

DATE: June 24 1958

John A. Howell  
COUNTY TREASURER

### APPROVAL OF OMAHA CITY PLANNING BOARD

(LOTS 1, 2, 3, 4, 5, 25, 26, 27, 34, 35, 36, 37)  
THIS PLAT OF MAPLE HILL WAS APPROVED BY THE CITY PLANNING BOARD IN THE CITY OF OMAHA, NEBRASKA THIS 6 DAY OF August, 1958.

John Salensen  
CHAIRMAN OF CITY PLANNING BOARD

### APPROVAL OF CITY ENGINEER OF OMAHA

(LOTS 1, 2, 3, 4, 5, 25, 26, 27, 34, 35, 36, 37)  
I HEREBY APPROVE THE PLAT OF MAPLE HILL THIS 24 DAY OF June, 1958.

A. P. DeBard  
Acting CITY ENGINEER

### OMAHA CITY COUNCIL ACCEPTANCE

(LOTS 1, 2, 3, 4, 5, 25, 26, 27, 34, 35, 36, 37)  
THIS PLAT OF MAPLE HILL WAS APPROVED, AND ACCEPTED BY THE CITY COUNCIL OF THE CITY OF OMAHA, ON THE 15 DAY OF September, 1958.

WITNESSES: M. J. Blum  
CITY CLERK

W. P. Hansen  
PRESIDENT OF THE COUNCIL