

Final Plat of Lynden Acres Third Addition to the City of Fremont, Nebraska

DATE OF ORIGINAL PLAT: 1912
 FILED IN: 1912
 BOOK: 123
 PAGE: 45
 COUNTY: DODGE
 STATE: NEBRASKA

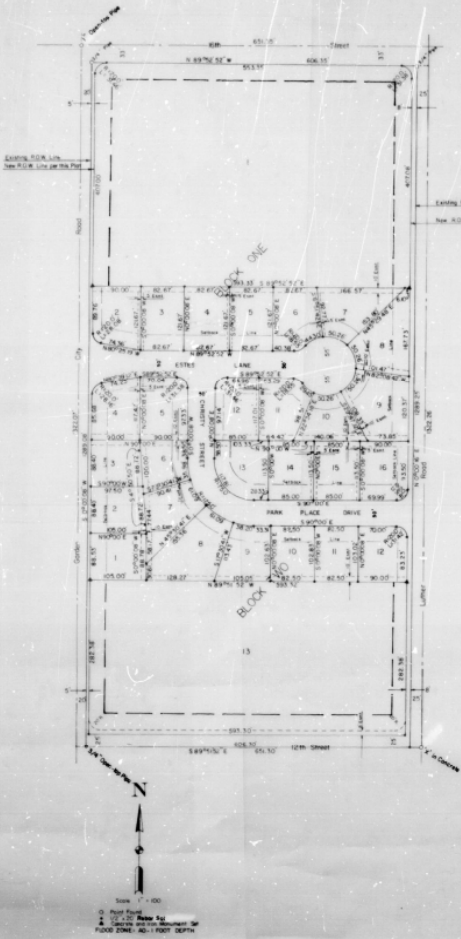
SUBJECT MATTER:

PART OF THE 1/4 CORNER OF SECTION 13, TOWNSHIP 20 NORTH, RANGE 2 EAST OF THE 6th P.M., DODGE COUNTY, NEBRASKA, PARTON DESCRIBED AS FOLLOWS:
 FROM THE EAST 1/4 CORNER OF SECTION 13, THENCE 2 000' 00" ALONG THE EAST LINE OF SAID 1/4 SEC. A DISTANCE OF 11 000' 00" TO A POINT ON THE SOUTHWEST CORNER OF SECTION 13, THENCE 2 000' 00" SOUTHWEST ALONG THE SOUTHWEST CORNER OF SAID SECTION 13, THENCE 2 000' 00" PARALLEL WITH SAID SOUTHWEST CORNER, A DISTANCE OF 11 000' 00" TO THE POINT OF BEGINNING, CONTAINED IN T.W. 20 N. R. 2 E. S. 13.

SENDER'S CERTIFICATE:

I, THE UNDERSIGNED REGISTERED LAND SURVEYOR, DO HEREBY CERTIFY THAT I HAVE EXAMINED THE SURVEY OF THE PART OF THIS SHOW AND DEEMED THEM CORRECT, AND THAT NECESSARY RECORDS HAVE BEEN PLACED AT ALL LOT CORNERS AND OTHER POINTS.

Wm. A. White
 Wm. A. White
 REGISTERED LAND SURVEYOR
 REGISTRATION NO. 12-215



WITNESSES:

BEFORE ME ALL MEN BY THEIR PRESENCE, THAT ONE R. SPONGE, VELLA I. DAY, DAVID G. WITTON, HAROLD J. SCHROEDER, HENRY C. STILES, EARL I. STILES, GARLAND WINTON, HERBERT SCHROEDER, A CORPORATION, AND THE CATHOLIC ARCHBISHOP OF OMAHA, A CORPORATION, WHOSE NAMES AND RESIDENCES OF THE PART OF SAID SHOW AND DEEMED THEM CORRECT, HAVE CALLED THE SAME TO BE DIVIDED INTO LOTS, BLOCKS, AND STREETS, AND HAVE BEEN SEEN AND SO BEING DEEMED TO BE VALID FOR PERSONAL USE, STATE LAW, COUNTY LAWS, AND PLANS OF THE SAID CITY OF FREMONT, NEBRASKA, AND THE CITY OF FREMONT, AT THE LOCATIONS AND TO THE EXTENT SHOWN ON THIS PLAT.

THE UNDERSIGNED PROFESSIONAL LAND SURVEYOR AT THE LOCATIONS AND TO THE EXTENT SHOWN ON THIS PLAT, SAID SURVEYOR HAS BEEN DEDICATED TO THE CITY OF FREMONT, NEBRASKA, IN PRIVATE UTILITY COMPANY, FOR NECESSARY USE OF ANYTHING PROPERTY OWNED FOR THE USE PURPOSES OF CONNECTIONS AND MAINTENANCE OF UTILITY LINES AND PIPES, MAINS AND LINES, AND CONDUITS.

Wm. R. Spence Vella I. Day
Harold J. Schroeder Henry C. Stiles
Earl I. Stiles Garland Winton
Philip Katt Herbert Schroeder
 THE CITY OF FREMONT, NEBRASKA, A CORPORATION
 BY: PHILIP KATT, PRESIDENT

Wm. A. White
 Wm. A. White, Registered Land Surveyor

ACKNOWLEDGMENT:

STATE OF NEBRASKA }
 DODGE COUNTY }
 ON THIS 6th DAY OF August, 1912, before me, a Notary Public, personally appeared W. A. White, Vella I. Day, David G. Witton, Harold J. Schroeder, Henry C. Stiles, Earl I. Stiles, Garland Winton, Herbert Schroeder, a corporation, Philip Katt - President,

AND PERSONALLY KNOWN TO ME TO BE THE ESSENTIAL PARTIES WHOSE NAMES APPEAR IN THE FOREGOING INSTRUMENT, AND WHO ACKNOWLEDGE THE VALIDITY OF SAID INSTRUMENT AND THE VALIDITY OF THE SAME.

WITNESSED BY ME AND OFFICIAL SEAL AT FREMONT, NEBRASKA, ON THE 6th DAY OF AUGUST, 1912.

Joseph Miller
 Notary Public
 My Comm. Expires July 1, 1913

PLATING BY ENGINEER APPROVAL:

ON THIS 6th DAY OF August, 1912, this plat of Lynden Acres Third Addition was approved and recorded in the office of the City of Fremont, Nebraska.

Edwin P. Drauman
 City Engineer

CITY ENGINEER APPROVAL:

ON THIS 6th DAY OF August, 1912, this plat of Lynden Acres Third Addition was approved and recorded in the office of the City of Fremont, Nebraska.

Edwin P. Drauman
 City Engineer

ACKNOWLEDGMENT:

STATE OF NEBRASKA }
 COUNTY OF DODGE }
 ACKNOWLEDGED BEFORE ME on August 6, 1912, BY THE CATHOLIC ARCHBISHOP OF OMAHA, A CORPORA...
 BY EARL I. STILES, ITS PRESIDENT, OR BEHALF OF THE CORPORATION.
Philip Katt
 SMALL NOTARY PUBLIC

Stewart Smith & Associates, Incorporated
 REGISTERED LAND SURVEYORS
 FREMONT, NEBRASKA