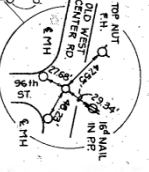
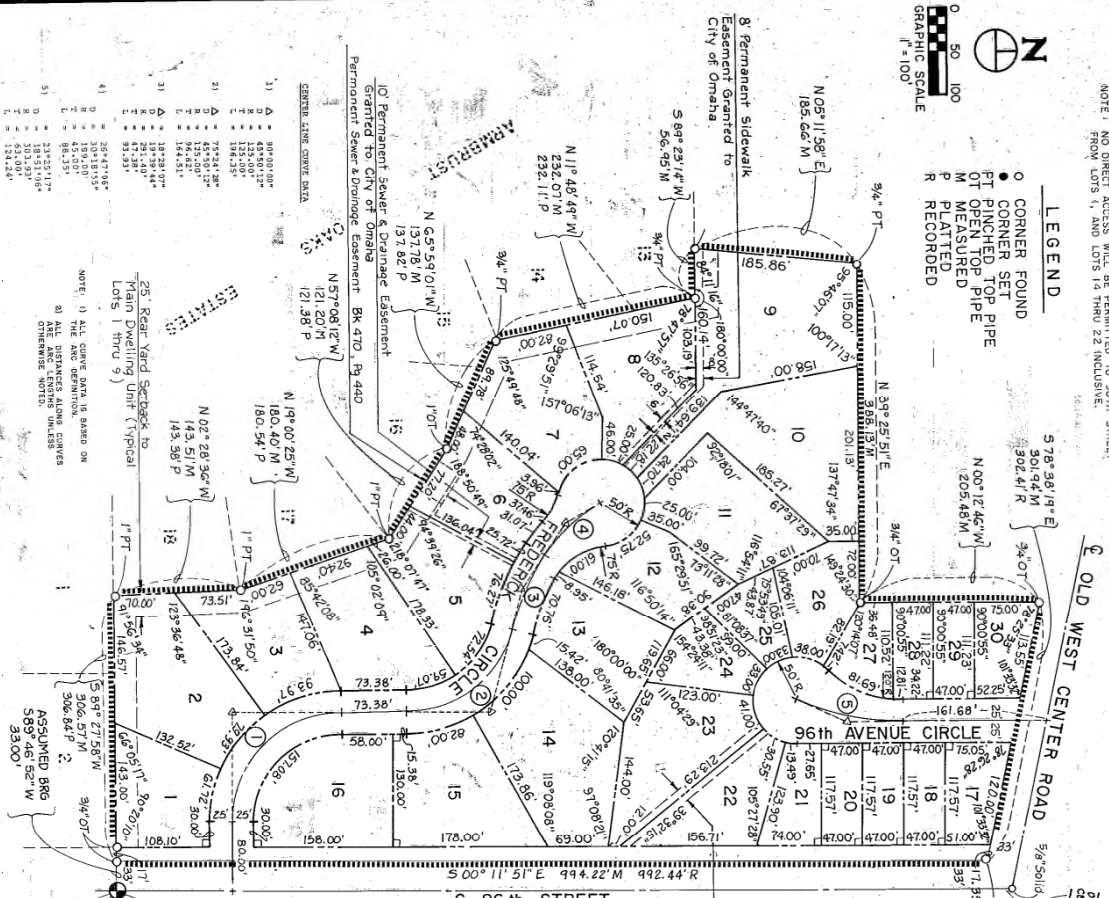


GRAND OAKS
A CLUSTER SUBDIVISION
LOCATED IN THE NE 1/4 OF THE NE 1/4 OF SECTION 33, TOWNSHIP 15 NORTH, RANGE 12 EAST DOUGLAS COUNTY, NEBRASKA 1987

NOTE: NO DIRECT ACCESS WILL BE PERMITTED TO 96th STREET FROM LOTS 1, AND LOTS 14 THRU 22 INCLUSIVE.



- LEGEND
o CORNER FOUND
o CORNER SET
PT PINCHED TOP PIPE
OT OPEN TOP PIPE
P MEASURED
R LEAD RECORDED



SUBDIVISION CERTIFICATE
I, Charles W. Mann, a registered land surveyor in the State of Nebraska... This plat of Grand Oaks... was approved and accepted by the Board of Public Health...



COURT AFFIDAVIT CERTIFICATE
This plat of Grand Oaks was prepared by Charles W. Mann, a Registered Professional Engineer in the State of Nebraska... Signed this 26th day of May, 1987, at Omaha, Nebraska.
APPROVED: Robert B. Staley, Surveyor

KNOW ALL MEN THESE PRESENTS:
That I, Leo F. DeBaker, President and secretary of Grand Oaks, Incorporated... This plat of Grand Oaks... was approved and accepted by the Board of Public Health...

STATE of Nebraska
COUNTY of Douglas
CORPORATION: GRAND OAKS, INCORPORATED

APPROVED BY CITY ENGINEER: Michael B. Staley
APPROVED BY CITY ENGINEER: [Signature]
APPROVED BY CITY ENGINEER: [Signature]

RECEIVED JUN -9 PM 2:16
OFFICE OF THE CITY ENGINEER, DOUGLAS COUNTY, NEBRASKA
BR 1805 N 33-152-C10 FEB 20 88
PG 351 N 91-581 DEL 1-23-88
CM COMF FEB 18 1988