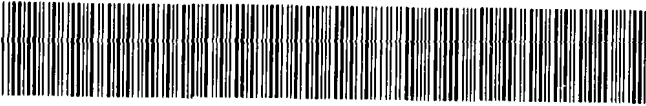




MISC 2011024702



MAR 18 2011 08:43 P 3

Misc
3 FEE 21⁰⁰ FB 05-22846
BKP _____ C/n _____ COMP MB
12 DEL _____ SCAN _____ FV _____
3

Received - DIANE L. BATTIATO
Register of Deeds, Douglas County, NE
3/18/2011 08:43:50.99



2011024702

**FIRST AMENDMENT TO
DECLARATION OF EASEMENTS, COVENANTS,
AND RESTRICTIONS FOR
LONG SCHOOL ADDITION**

This First Amendment to Declaration of Easements, Covenants, and Restrictions for Long School Addition ("First Amendment") is made on the date hereinafter set forth by the New Community Development Corporation, d/b/a NeighborWorks Omaha, a nonprofit corporation in the State of Nebraska, hereinafter referred to as "Declarant."

PRELIMINARY STATEMENT:

On January 28, 2011, Declarant caused to be recorded in the office of the Register of Deeds of Douglas County, Nebraska, as Instrument Number 2011010138, a Declaration of Easements, Covenants, and Restrictions for Long School Addition (the "Declaration") pertaining to the real property in Douglas County, Nebraska, described as follows:

Lots 1 through 10, inclusive, and Out Lots "A" and "B," Long School Addition, an addition to the City of Omaha, as surveyed, platted and recorded in Douglas County, Nebraska.

Due to inadvertence, Exhibit "A" referred to in the Declaration was not attached to the Declaration when the Declaration was recorded. Declarant is currently the owner of Lots 1 and 3 through 10, and Outlots "A" and "B" of said Long School Addition, and desires to amend the Declaration by adding Exhibit "A" to the Declaration, as originally intended.

Now, Therefore, Declarant hereby amends the Declaration by adding thereto Exhibit "A" attached to this First Amendment. All references to Exhibit "A" in the Declaration shall be deemed to refer to Exhibit "A" attached to this First Amendment.

EXECUTED this 14 day of March, 2011.

NEW COMMUNITY DEVELOPMENT
CORPORATION, a nonprofit corporation

By: [Signature]
President

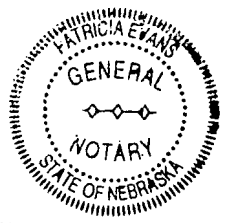
*Return to Planning
Pat Evans*

STATE OF NEBRASKA)
) §
COUNTY OF DOUGLAS)

The foregoing instrument was acknowledged before me this 14 day of March, 2011, by Kenneth G. Lyons, President of New Community Development Corporation, a Nebraska nonprofit corporation, on behalf of the corporation.

Patricia Evans

Notary Public



MY COMMISSION EXPIRES:
September 26, 2012

Project No. EGA071279E

Exhibit "A"

Date: 8-17-10

DESCRIPTION & SKETCH

LEGAL DESCRIPTION: STORM SEWER EASEMENT

OUT LOT "A" AND THE EAST 4 FEET OF THE SOUTH 20 FEET OF OUT LOT "B", ALL IN LONG SCHOOL ADDITION, A CLUSTER SUBDIVISION, AS SURVEYED, PLATTED AND RECORDED IN DOUGLAS COUNTY, NEBRASKA.

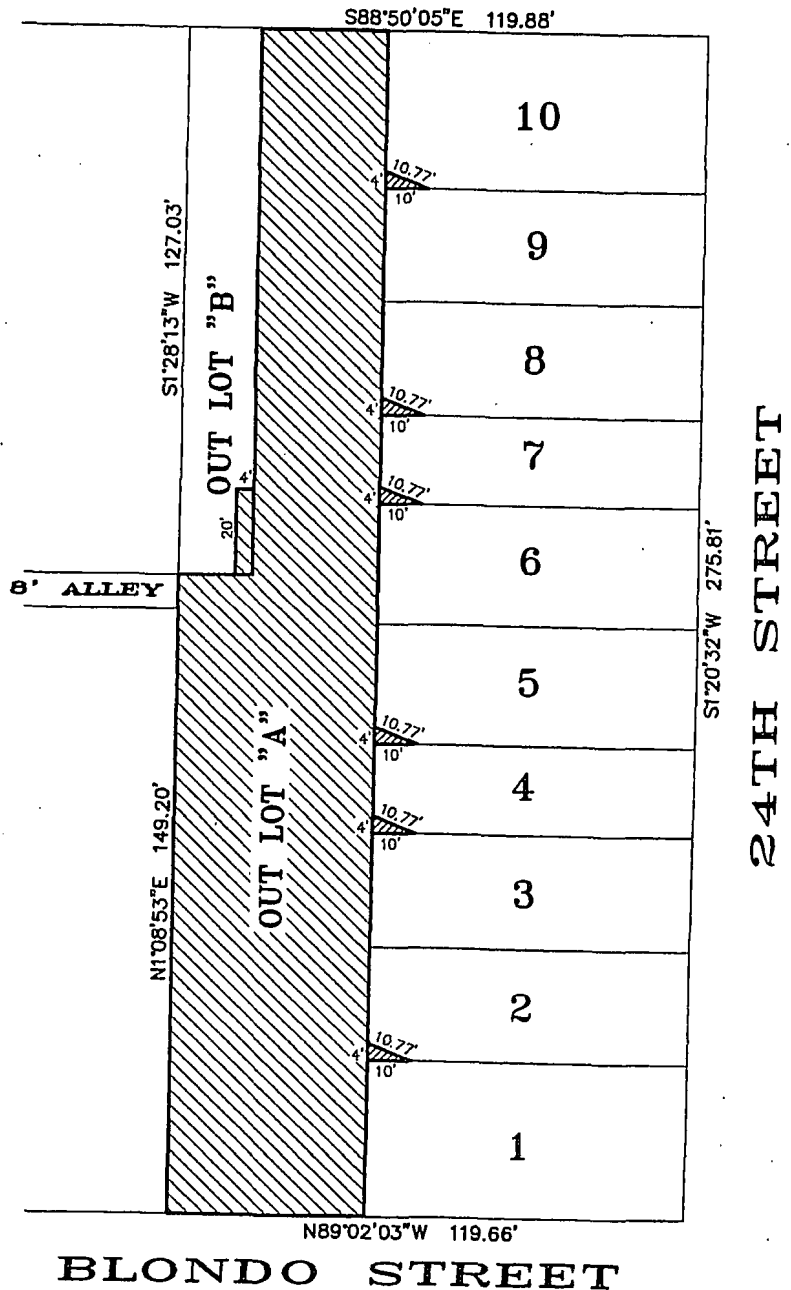
LEGAL DESCRIPTION: SANITARY SEWER EASEMENT

OUT LOT "A", IN LONG SCHOOL ADDITION, A CLUSTER SUBDIVISION, AS SURVEYED, PLATTED AND RECORDED IN DOUGLAS COUNTY, NEBRASKA.

LEGAL DESCRIPTIONS: SEWER SERVICE LINE EASEMENTS

A 4 FOOT NORTH-SOUTH BY 10 FEET EAST-WEST BY 10.77 FEET NORTHWEST-SOUTHEAST TRIANGLE SITUATED IN THE SOUTHWEST CORNER OF LOT EACH OF LOTS 2, 4, 5, 7, 8 AND 10, ALL IN LONG SCHOOL ADDITION, A CLUSTER SUBDIVISION, AS SURVEYED, PLATTED AND RECORDED IN DOUGLAS COUNTY, NEBRASKA. EASEMENT BENEFITS ARE AS FOLLOWS; EASEMENT ON LOT 2 BENEFITS LOT 1, EASEMENT ON LOT 4 BENEFITS LOT 3, EASEMENT ON LOT 5 BENEFITS LOT 4, EASEMENT ON LOT 7 BENEFITS LOT 6, EASEMENT ON LOT 8 BENEFITS LOT 7, EASEMENT ON LOT 10 BENEFITS LOT 9.

PATRICK AVENUE



**EHRHART
GRIFFIN &
ASSOCIATES**

ENGINEERING PLANNING LAND SURVEYING
3552 Farnam Street • Omaha, Nebraska 68131 • 402 / 551-0631