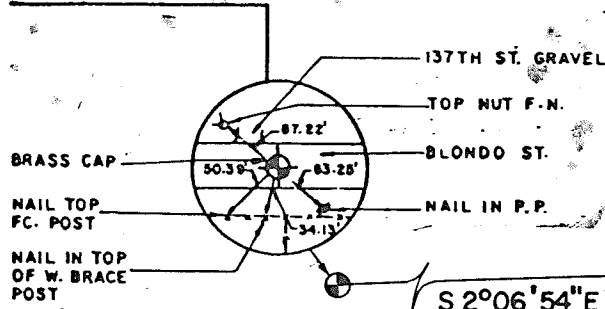


THE LINDENS

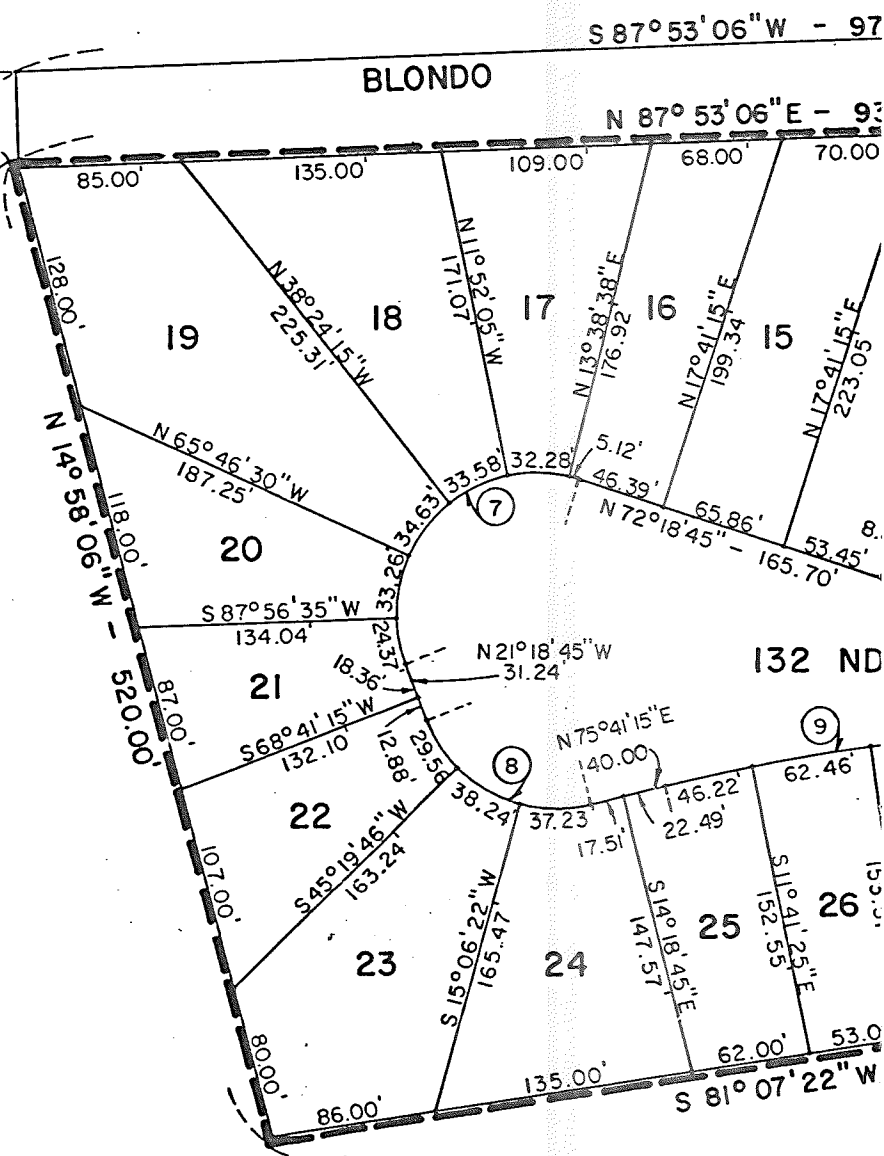
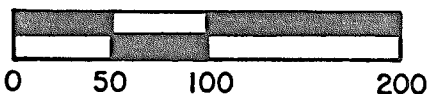
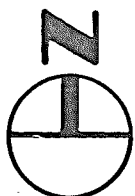
A CLUSTER
(LOTS 1 THRU 30)
A REPLAT OF LOT 19
PART OF THE NE 1/4 OF SECTION 13
TOWNSHIP 15 NORTH
DOUGLAS COUNTY, NEBRASKA

N 1/4 CORNER OF
SEC. 13 - T15N - R11E



S 2°06'54"E
50.00'

POINT OF
BEGINNING



DEDICATION

KNOW ALL MEN BY THESE PRESENTS:

That we, Daniel E. Sheehan, President, and Eldon J. McKamy, Secretary of The Catholic Archbishop of Omaha, a Nebraska Non-Profit Corporation, sole owners and proprietors of the land embraced within this plat and described in the Surveyor's Certificate, have caused the same to be subdivided into lots and streets, said subdivision to be known as THE LINDENS, the lots to be numbered as shown (Lots 1 through 30 inclusive), and we approve the disposition of the property as shown on this plat and we hereby dedicate to the public for the public use the streets, circles and avenues as shown herein and we do also grant the easements shown on the plat to the agencies designated and their assigns for the purposes noted. We do further grant a perpetual license in favor of and granting to the Omaha Public Power District, and any company which has been granted a franchise to provide a Cable Television system within the boundaries of this plat, and U.S. West Direct, their successors and assigns, to erect and operate, maintain, repair and renew underground cables or conduits, poles with the necessary supports, sustaining wires, crossarms, guys and anchors and other instrumentalities, and extend thereon wire for the carrying and transmission of electric current for light, heat, power and for the transmission of signals and sounds of all kinds including signals provided by a Cable Television System, and the reception on, over, through, under and across a five (5) foot wide strip of land abutting the front and the side of boundary lines of all lots; and an (8) foot wide strip of land abutting the West boundary lines of Lots 19

1) Δ = 12°30'00"
D = 20°06'14"
R = 285.00'
T = 31.21'
L = 62.18'

Centerline

2) Δ
D
R
T
L

4) Δ = 55°30'00"
D = 88°08'51"
R = 65.00'
T = 34.20'
L = 62.96'

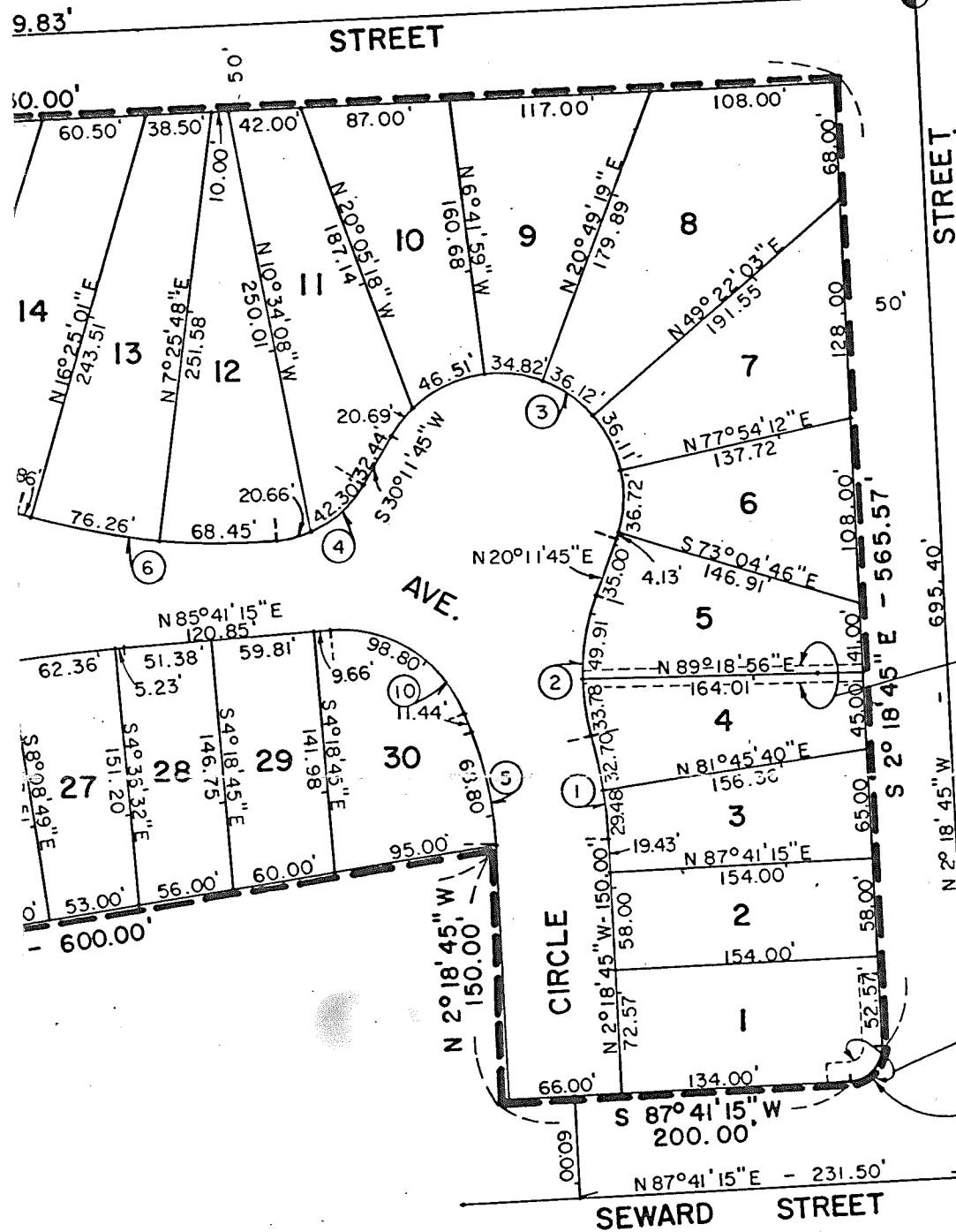
5) Δ
D
R
T
L

LINDEN

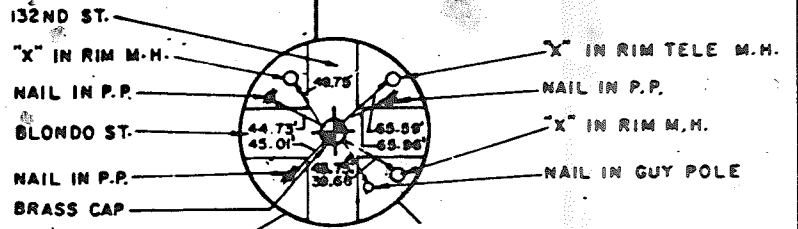
SUBDIVISION

(30 INCLUSIVE)
 123, LINDEN PARK
 THE NE 1/4 OF SECTION 13
 RTH, RANGE 11 EAST
 NTY, NEBRASKA

390



NE CORNER OF
 SEC. 13 - T15N-R11E



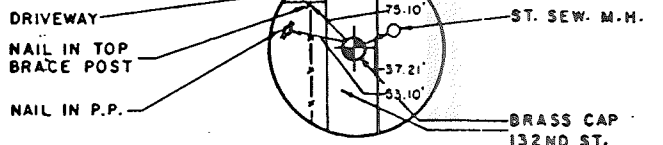
NOTE: NO DIRECT ACCESS WILL
 BE PERMITTED TO 132 ND
 STREET FROM LOTS 1
 THRU 8 INCLUSIVE, AND
 TO BLONDO STREET FROM
 LOTS 8 THRU 19 INCLU-
 SIVE.

10' PERM. SEWER AND DRAINAGE
 EASEMENT TO S.I.D. 325

10' PERM. ESMT. FOR SIGNAGE
 RECORDED FEB. 15, 1985
 BK. 731, PG. 438

R=20.00'
 CH=28.28'
 S 42°41'15" W
 ARC=31.42'

S.E. CORNER OF THE
 NE 1/4 OF NE 1/4 OF
 SEC. 13, T15N, R11E
 (FOUND IRON PIN)
 E 1/4 CORNER OF
 SEC. 13 - T15N-R11E



Curve Data

- = 35°00'00"
- = 41°49'18"
- = 137.00'
- = 43.20'
- = 83.69'

- 3) Δ = 170°00'00"
- D = 79°01'43"
- R = 72.50'
- T = 828.68'
- L = 215.11'

- = 18°00'00"
- = 26°09'45"
- = 219.00'
- = 34.69'
- = 68.80'

- 6) Δ = 22°00'00"
- D = 14°19'26"
- R = 400.00'
- T = 77.75'
- L = 153.59'