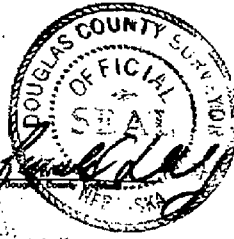


ON REPLAT 1

NG
SIVE:
SION
ASKA



COUNTY ENGINEER'S CERTIFICATE

The plat of LINDEN ESTATES 2ND ADDITION REPLAT 1 was reviewed by the Douglas County Engineer's office.

2/2/95 *[Signature]*

COUNTY TREASURER'S CERTIFICATE

THIS IS TO CERTIFY THAT I find no register or record from due or delinquent against the property described in the Surveyor's Certificate and approved in this plat, as shown by the records of this office, the 5th day of February, 1995.

December 5, 1995
January 14, 1996

[Signature]
City Treasurer

APPROVAL OF THE CITY ENGINEER OF OMAHA

I HEREBY APPROVE the plat of LINDEN ESTATES 2ND ADDITION REPLAT 1 (Lots 1 through 6, including and Detail C) as to the survey reference the 11th day of May, 1995.

[Signature]
City Engineer

I HEREBY CERTIFY that adequate provisions have been made for compliance with Chapter 53 of the Omaha Municipal Code.

January 22, 1996

[Signature]
City Engineer

APPROVAL OF THE CITY PLANNING BOARD

The plat of LINDEN ESTATES 2ND ADDITION REPLAT 1 was approved and accepted by the Planning Board of the City of Omaha the 5th day of April, 1995.

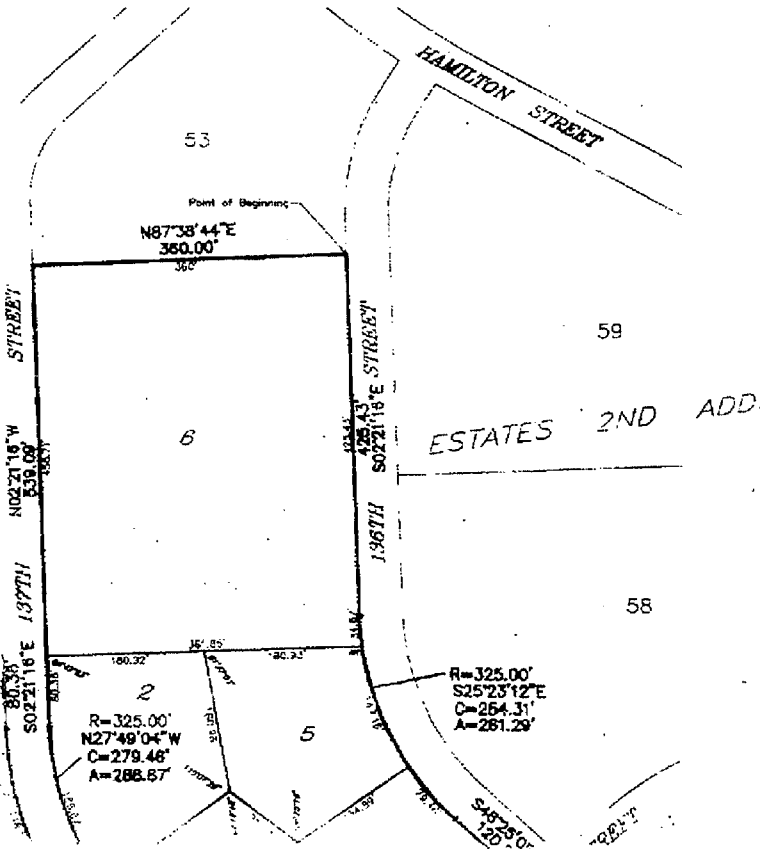
[Signature]
City Planning Board

APPROVAL OF THE OMAHA CITY COUNCIL

The plat of LINDEN ESTATES 2ND ADDITION REPLAT 1 was approved and accepted by the City Council of Omaha the 13th day of April, 1995.

[Signature]

[Signature]
City Council



FINAL PLAT

Leamp, rynearson & associates, inc.
engineers
surveyors
planners
14747 California Street
Omaha, Nebraska 68154-1802
402-408-8408
FAX 402-408-8498

STATES 2ND ADDITION REPLAT 1
COUNTY, NEBRASKA

11 May 1996

January 22, 1996

ACKNOWLEDGMENT OF NOTARIES

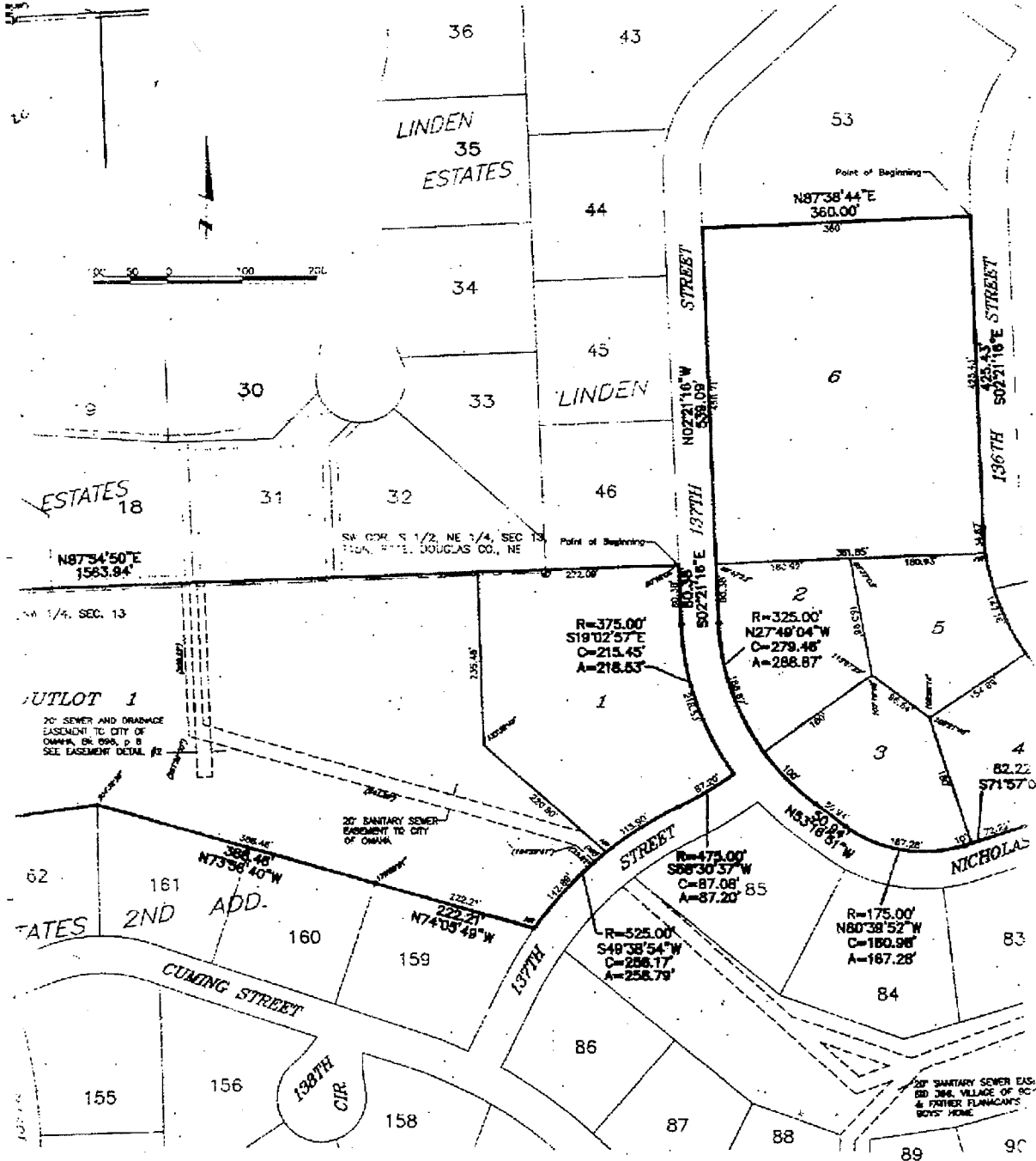
APPROVAL OF

This plan of LINDEN ESTATES AND ADDITION REPLAT was approved on the 22nd day of April, 1996

Juan R. Maly

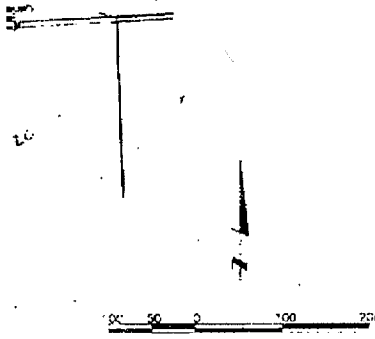
APPROVAL OF
The plan of LINDEN ESTATES AND ADDITION REPLAT was approved on the 22nd day of April, 1996

NOTARIAL PUBLIC
STATE OF IOWA



1996, CE, Notary Public, a Notary Public duly commissioned and qualified for said County, appeared before me on this day and acknowledged to me that he executed the foregoing instrument as President of Morgan Construction, Inc. and as the authorized representative of the foregoing Corporation for the purposes set out herein.

Notary Public



ESTATES 18
N87°34'50"E
1563.84'

LOT 1
20' SEWER AND DRAINAGE EASEMENT TO CITY OF OMAHA, OR 690, P. 8 SEE EASEMENT DETAIL #2

ESTATES 2ND ADD.
S306.46'
N73°38'40"W

155
156
158

159
160
161

18
30
31
32
33
34
35
36

43
44
45
46
53
62
63

6
1
2
3
4
5
83
84
85
86
87
88
89
90

