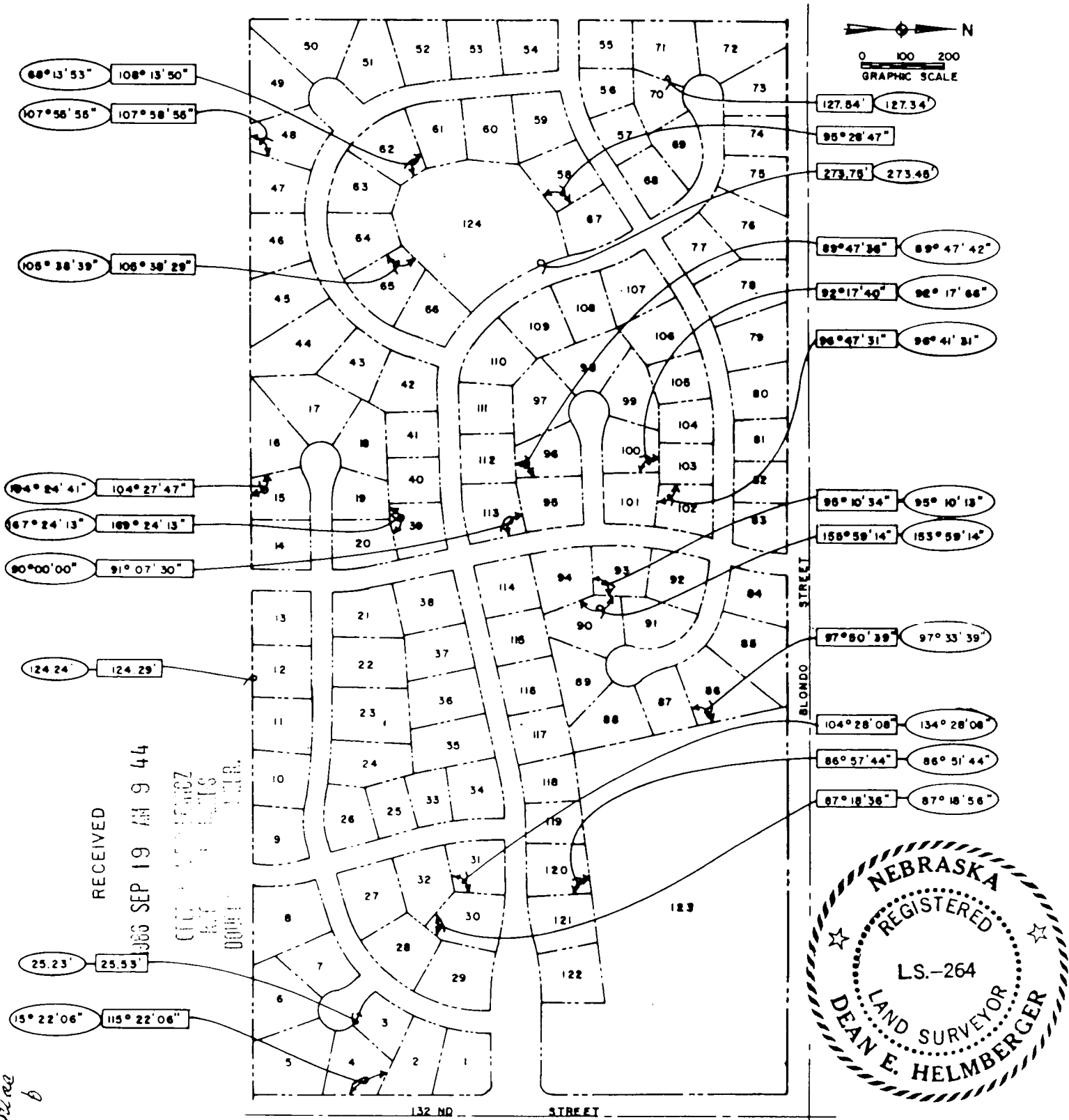


AFFIDAVIT
LINDEN PARK

This is a correction to Lots 3, 4, 12, 15, 30, 31, 39, 48, 58, 62, 65, 71, 86, 90, 93, 96, 100, 102, 113, 120 and 124 of Linden Park, a subdivision located in the North Half (N1/2) of the Northeast Quarter (NE1/4) of Section 13, Township 15 North, Range 11 East of the 6th P.M., Douglas County, Nebraska, as platted and recorded.



This is to certify that the lot dimensions and angles encircled on this plat were shown in error on the original platting of Linden Park and I further certify that the lot dimensions and angles enclosed within a rectangle as shown on this affidavit are the true, correct and originally intended lot dimensions and angles.

Aug 12, 1986
Date

Dean E. Helmberger
Dean E. Helmberger, L.S. 264

LEGEND

(140.81) INFORMATION TO BE CORRECTED
(146.01) CORRECTED INFORMATION

SHEET
1/1
DATE
9-12-86
K.M.A. NO.
8830941

AFFIDAVIT
CORRECTION PLAT

KIRKHAM, MICHAEL AND ASSOCIATES
ARCHITECTS
ENGINEERS
PLANNERS