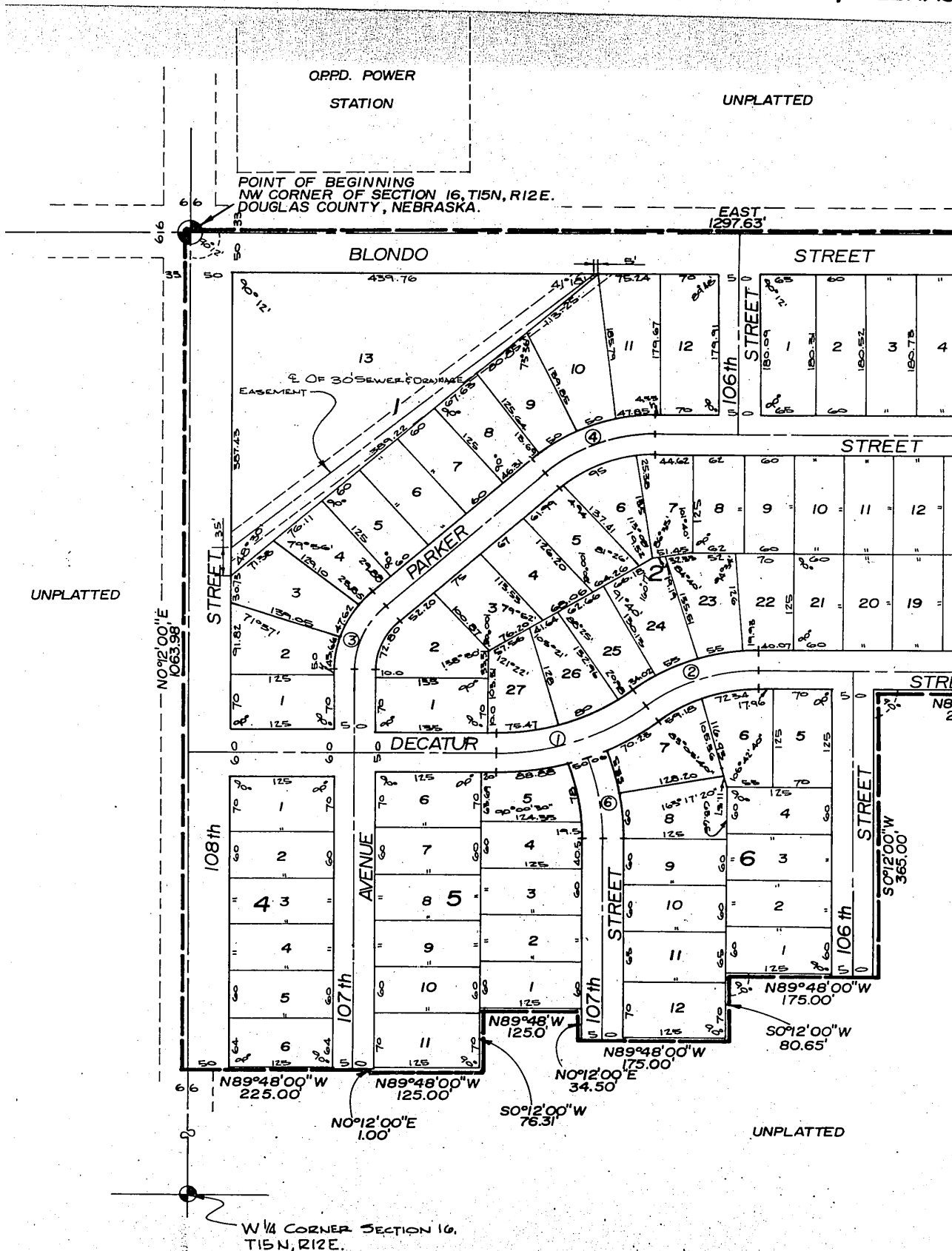


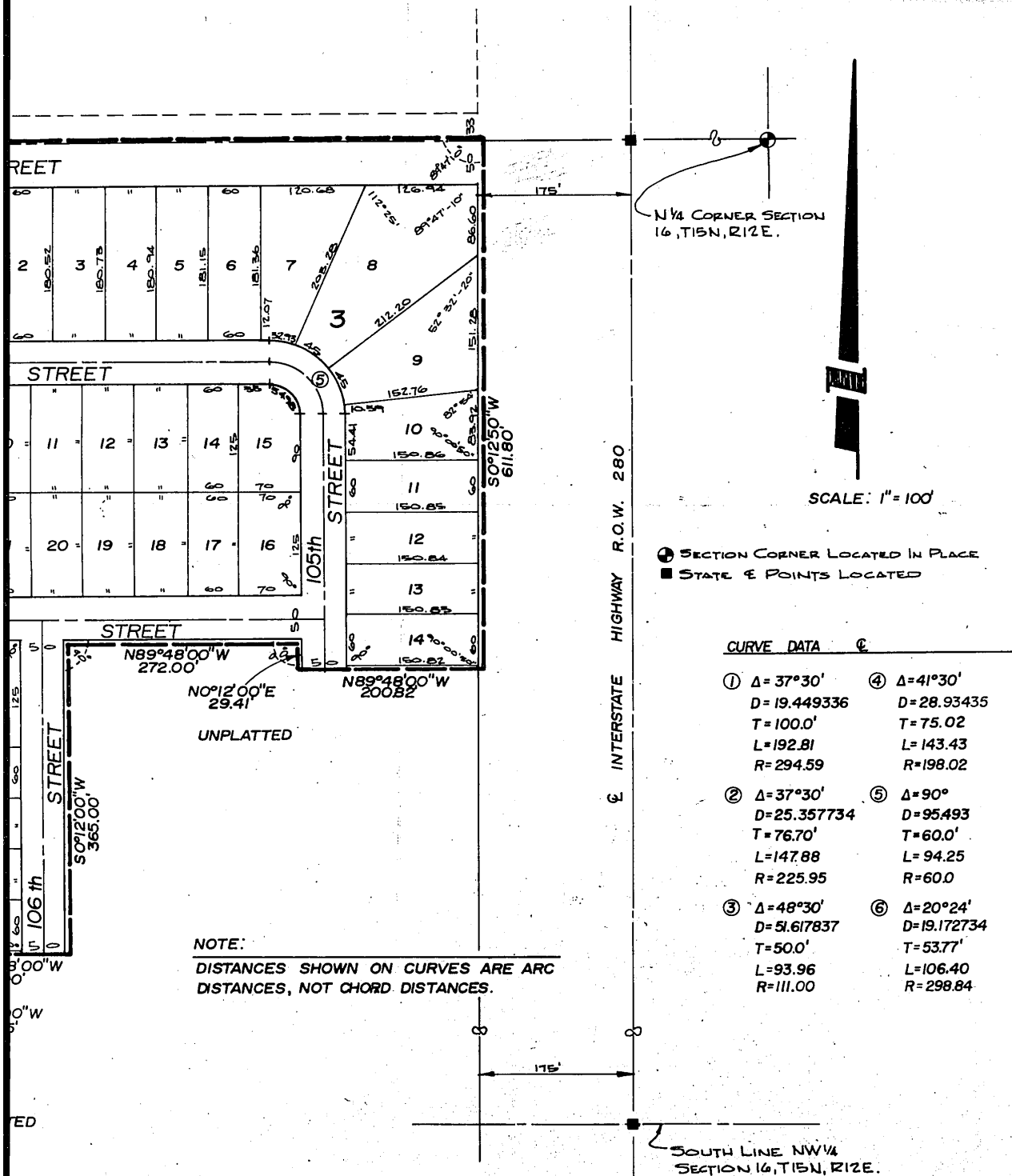
LEE VAL

LOTS 1 THRU 13, INCLUSIVE, BLOCK 1; LOTS 1 THRU 14, INCLUSIVE, BLOCK 3; LOTS 1 THRU 6, INCLUSIVE, BLOCK 5; AND LOTS 1 THRU 12, INCLUSIVE, BEING A PLATTING OF PART OF THE NW 1/4 OF T15N, R12E, OF THE 6th P.M., DOUGLAS COUNTY, NEBRASKA



ALLEY

1 THRU 27, INCLUSIVE, BLOCK 2; LOTS 1
, INCLUSIVE, BLOCK 4; LOTS 1 THRU 11,
NCLUSIVE, BLOCK 6.
W 1/4 OF THE NW 1/4 OF SECTION 16,
Y, NEBRASKA.



DOUGLAS COUNTY
SURVEYOR'S OFFICE

James A. Schuchman

COUNTY TREASURER'S CERTIFICATE

This is to certify that I find no regular or special taxes, due or delinquent, against the property described in the Surveyor's Certificate and embraced in this plat, as shown by the records of this office, this 27 day of July, 1963.

Deputy

[Signature]
Treasurer

[Seal: OFFICIAL SEAL OF DOUGLAS COUNTY, NEBRASKA]

[Signature: D. P. Nelson]
City Engineer

APPROVAL OF CITY ENGINEER

I hereby approve the plat of LEE VALLEY on this 28th day of February, 1963.

APPROVAL OF CITY PLANNING BOARD

This plat of LEE VALLEY was approved by the City Planning Board of the City of Omaha on this 13th day of MARCH, 1963.

[Signature: Wallace Hopkins]
Chairman, City Planning Board

APPROVAL OF CITY COUNCIL

This plat of LEE VALLEY was approved and accepted by the City Council of Omaha on this 16th day of April, 1963.

[Signature: James J. Dworak]
Mayor

[Signature]
President

[Signature: Mary L. Galligan]
City Clerk

3
INDEXED IN HISTORICAL INDEX AND RECORDED IN THE REGISTER OF DEEDS OFFICE IN DOUGLAS COUNTY, NEBRASKA
ON 22 April 1963 AT 9:49A M. THOMAS J. O'CONNOR, REGISTER OF DEEDS
2750

LAMP, RYNEARSON & ASSOCIATES

CONSULTING ENGINEERS - LAND SURVEYORS

SCALE AS SHOWN
DRAWN BY PRL
DATE 12-28-62
REVISIONS

LEE VALLEY

FINAL PLAT

DRAWING NUMBER
62-13