

COUNTER LM C.E. LM
VERIFY LM D.E. LM
PROOF _____
FEES \$ 28.00
CHECK # 45817
CHG _____ CASH _____
REFUND _____ CREDIT _____
SHORT _____ NCR _____

FILED SARPY COUNTY NEBRASKA
INSTRUMENT NUMBER

2014-20963

09/19/2014 2:59:37 PM

Floyd J. Dowling

REGISTER OF DEEDS



SUPPLEMENTAL
SANITARY AND IMPROVEMENT DISTRICT STATEMENT
SARPY COUNTY, NEBRASKA

STATE OF NEBRASKA)
) ss.
COUNTY OF SARPY)

Doris J. Nicholson being first duly sworn, states that she is the Clerk of Sanitary and Improvement District No. 275 of Sarpy County, Nebraska and makes the following statement regarding same:

1. District Number: 275
2. Outer Boundaries: See Exhibit "A" attached hereto and by this reference made a part hereof.
3. The purpose of this District shall be acquiring, installing, repairing, maintaining, renewing, operating and replacing electrical service lines and conduits, a sewer system, a water system, a system of sidewalks, public roads, streets and highways, a civil defense warning system, to contract for water for fire protection and for resale to the residents of the District, and to contract for gas and electricity, for street lighting for the public streets and highways within the District and to acquire, improve and operate public parks, playgrounds and recreational facilities. The District shall have all of the powers and authorities as are permitted by law, to achieve the purposes hereinabove set forth, including, but not in limitation of the foregoing, the power and authority to contract with corporations, utility companies, or municipalities for water for fire protection and for resale to the residents of the District, and for electricity and gas, for street lighting of the public streets and highways within the District and for the disposal of sewage in the use of existing sewer improvement facilities and for the operation and maintenance of electrical service lines and conduits.
4. The District has the power to levy an unlimited property tax to pay its debts and its expenses of operation and maintenance.

FULLENKAMP, DOYLE & JOBEUN
11440 WEST CENTER ROAD
OMAHA, NEBRASKA 68144-4482
Karan

5. The District is required by statute to levy special assessments on property in the District to the full extent of special benefits arising by reason of improvements installed by it.

6. In all years when a budget is required by law, the District's annual budget is filed with the County Clerk, which budget shows anticipated revenue and expenses, levy, and indebtedness of the District.

7. The actual current levy of the District may be obtained from the County Clerk.

8. A copy of the District's annual financial audit is on file with the Clerk of the District and the State Auditor of Public Accounts.

Doris J. Nielsen
CLERK

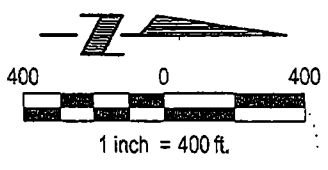
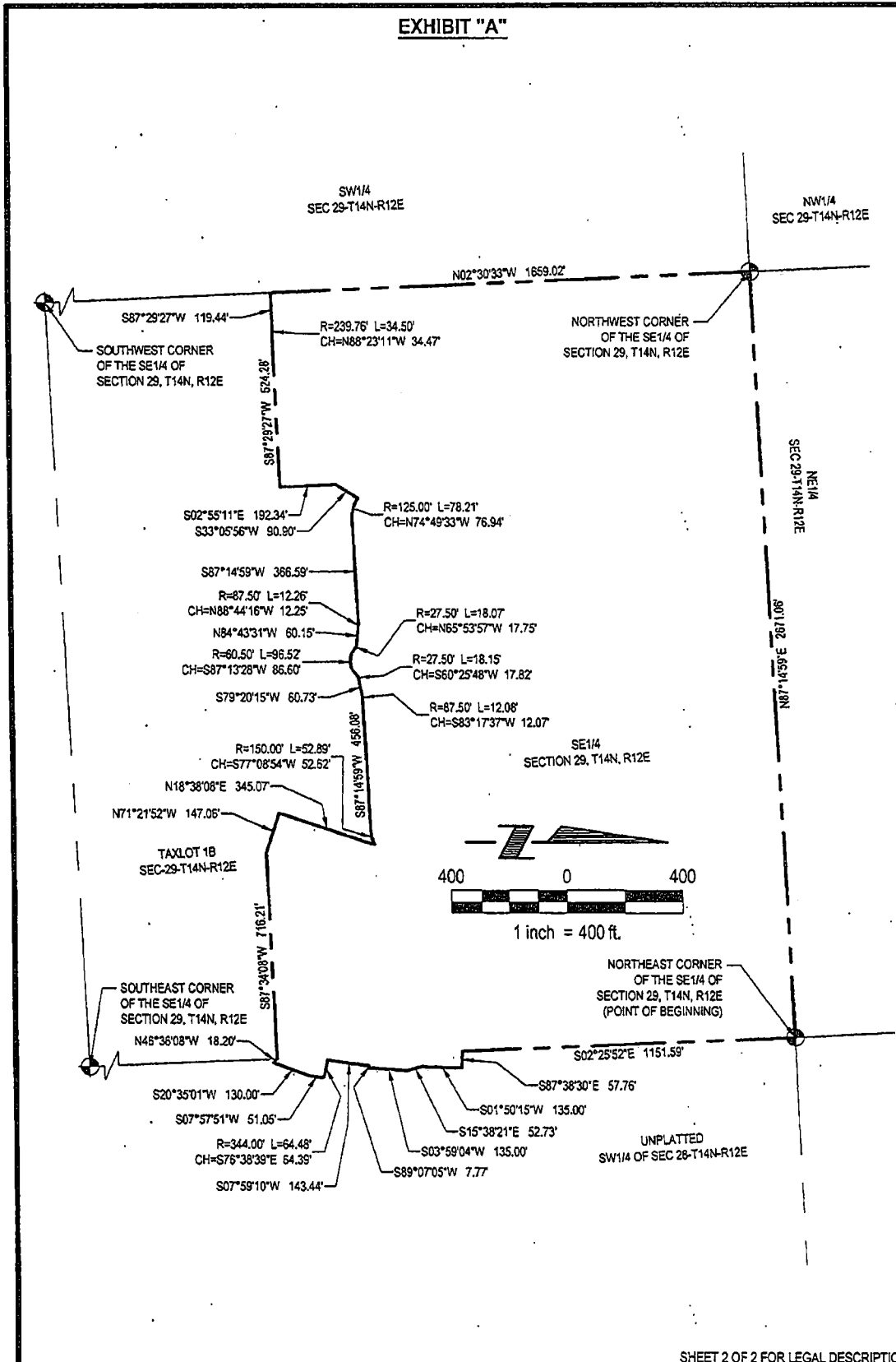
SUBSCRIBED and sworn to before me this 12th day of September, 2014

Karen K. Kula
Notary Public



B

EXHIBIT "A"



SHEET 2 OF 2 FOR LEGAL DESCRIPTION

	E & A CONSULTING GROUP, INC. Engineering • Planning • Environmental & Field Services 330 North 117th Street Omaha, NE 68154 Phone: 402.895.4700		DISTRICT BOUNDARY SANITARY & IMPROVEMENT DISTRICT No. 275 SARPY COUNTY, NEBRASKA
	Drawn by: JRS Chkd by:	Date: 07/23/2014	
Job No.: 2004.225.001		SHEET 1 OF 2	

2014-20963 C

EXHIBIT "A"

LEGAL DESCRIPTION

ALL OF LOTS 1 THRU 54, INCLUSIVE, LOTS 83 THRU 124, INCLUSIVE, LOTS 143 THRU 156, INCLUSIVE, LOTS 175 THRU 188, INCLUSIVE, 202 THRU 209, INCLUSIVE, AND OUTLOTS "A" THRU "F", KINGSBURY HILLS, A SUBDIVISION LOCATED IN THE NE1/4 OF THE NE1/4, SE1/4 OF THE SE1/4, SW1/4 OF THE SE1/4, NW1/4 OF THE SE1/4 ALL LOCATED IN SECTION 29; AND ALSO TOGETHER WITH LOTS 1 THRU 112, KINGSBURY HILL REPLAT ONE, A SUBDIVISION LOCATED IN SAID SE1/4 OF SECTION 29; AND ALSO TOGETHER WITH THE INCLUDED STREET RIGHT-OF-WAYS OF 108TH STREET, 109TH STREET, 110TH STREET, 110TH AVENUE, 111TH STREET, 111TH AVENUE, 112TH STREET, 113TH STREET, 113TH AVENUE, 114TH STREET, CIMARRON STREET, LARAMIE STREET, SHERMAN STREET, PROSPECT STREET, GRANT STREET, GRANT CIRCLE, LINCOLN ROAD, AND TOGETHER WITH A TRACT OF LAND LOCATED IN PART OF THE SW1/4 OF THE SW1/4 AND PART OF THE NW1/4 OF THE SW1/4, ALL LOCATED IN SECTION 28; ALL LOCATED IN TOWNSHIP 14 NORTH, RANGE 12 EAST OF THE 6TH P.M., SARPY COUNTY, NEBRASKA, MORE PARTICULARLY DESCRIBED AS FOLLOWS:

BEGINNING AT THE NORTHEAST CORNER OF SAID SE1/4 OF SECTION 29, SAID POINT ALSO BEING THE NORTHWEST CORNER OF SAID SW1/4 OF SECTION 28; THENCE S02°25'52"E (ASSUMED BEARING) ALONG THE EAST LINE OF SAID SE1/4 OF SECTION 29, SAID LINE ALSO BEING THE WEST LINE OF SAID SW1/4 OF SECTION 29, THE SAID LINE ALSO BEING THE EAST RIGHT-OF-WAY LINE OF SAID 108TH STREET, A DISTANCE OF 1151.59 FEET; THENCE S87°38'30"E, A DISTANCE OF 57.76 FEET; THENCE S01°50'15"W, A DISTANCE OF 135.00 FEET; THENCE S15°38'21"E, A DISTANCE OF 52.73 FEET; THENCE S03°59'04"W, A DISTANCE OF 135.00 FEET; THENCE S89°07'05"W, A DISTANCE OF 7.77 FEET; THENCE S07°59'10"W, A DISTANCE OF 143.44 FEET; THENCE SOUTHEASTERLY ON A CURVE TO THE RIGHT WITH A RADIUS OF 344.00 FEET, A DISTANCE OF 64.48 FEET, SAID CURVE ALSO HAVING A LONG CHORD WHICH BEARS S76°38'39"E, A DISTANCE OF 64.39 FEET; THENCE S07°57'51"W, A DISTANCE OF 51.05 FEET; THENCE S20°35'01"W, A DISTANCE OF 130.00 FEET; THENCE N46°36'08"W, A DISTANCE OF 18.20 FEET TO A POINT ON THE EAST RIGHT-OF-WAY LINE OF 108TH STREET, SAID POINT ALSO BEING ON SAID EAST LINE OF SE1/4 OF SECTION 29, SAID POINT ALSO BEING ON SAID WEST LINE OF SW1/4 OF SECTION 28; THENCE ALONG THE SOUTH RIGHT-OF-WAY LINE OF 108TH STREET AND THE WESTERLY EXTENSION THERE OF, SAID LINE ALSO BEING THE SOUTHERLY LINE OF SAID KINGSBURY HILLS, SAID LINE ALSO BEING THE SOUTHERLY LINE OF SAID KINGSBURY HILLS REPLAT ONE ON THE FOLLOWING NINETEEN (19) COURSES: THENCE S87°34'08"W, A DISTANCE OF 716.21 FEET; THENCE N71°21'52"W, A DISTANCE OF 147.06 FEET; THENCE N18°38'08"E, A DISTANCE OF 345.07 FEET; THENCE WESTERLY ON A CURVE TO THE RIGHT WITH A RADIUS OF 150.00 FEET, A DISTANCE OF 52.89 FEET, SAID CURVE HAVING A LONG CHORD WHICH BEARS S77°08'54"W, A DISTANCE OF 52.62 FEET; THENCE S87°14'59"W, A DISTANCE OF 456.08 FEET; THENCE WESTERLY ON A CURVE TO THE LEFT WITH A RADIUS OF 87.50 FEET, A DISTANCE OF 12.08 FEET, SAID CURVE HAVING A LONG CHORD WHICH BEARS S83°17'37"W, A DISTANCE OF 12.07 FEET; THENCE S79°20'15"W, A DISTANCE OF 60.73 FEET; THENCE SOUTHWESTERLY ON A CURVE TO THE LEFT WITH A RADIUS OF 27.50 FEET, A DISTANCE OF 18.15 FEET, SAID CURVE HAVING A LONG CHORD WHICH BEARS S60°25'48"W, A DISTANCE OF 17.82 FEET; THENCE WESTERLY ON A CURVE TO THE RIGHT WITH A RADIUS OF 60.50 FEET, A DISTANCE OF 96.52 FEET, SAID CURVE HAVING A LONG CHORD WHICH BEARS S87°13'28"W, A DISTANCE OF 86.60 FEET; THENCE NORTHWESTERLY ON A CURVE TO THE LEFT WITH A RADIUS OF 27.50 FEET, A DISTANCE OF 18.07 FEET, SAID CURVE HAVING A LONG CHORD WHICH BEARS N65°53'57"W, A DISTANCE OF 17.75 FEET; THENCE N84°43'31"W, A DISTANCE OF 60.15 FEET; THENCE WESTERLY ON A CURVE TO THE LEFT WITH A RADIUS OF 87.50 FEET, A DISTANCE OF 12.26 FEET, SAID CURVE HAVING A LONG CHORD WHICH BEARS N88°44'16"W, A DISTANCE OF 12.25 FEET; THENCE S87°14'59"W, A DISTANCE OF 366.59 FEET; THENCE NORTHWESTERLY ON A CURVE TO THE RIGHT WITH A RADIUS OF 125.00 FEET, A DISTANCE OF 78.21 FEET, SAID CURVE HAVING A LONG CHORD WHICH BEARS N74°49'33"W, A DISTANCE OF 76.94 FEET; THENCE S33°05'56"W, A DISTANCE OF 90.90 FEET; THENCE S02°55'11"E, A DISTANCE OF 192.34 FEET; THENCE S87°29'27"W, A DISTANCE OF 524.28 FEET; THENCE WESTERLY ON A CURVE TO THE LEFT WITH A RADIUS OF 239.76 FEET, A DISTANCE OF 34.50 FEET, SAID CURVE HAVING A LONG CHORD WHICH BEARS N88°23'11"W, A DISTANCE OF 34.47 FEET; THENCE S87°29'27"W, A DISTANCE OF 119.44 FEET TO A POINT ON THE WEST LINE OF SAID SE1/4 OF SECTION 29, SAID POINT ALSO BEING ON THE WEST RIGHT-OF-WAY LINE OF SAID 114TH STREET; THENCE N02°30'33"W ALONG SAID WEST LINE OF THE SE1/4 OF SECTION 29, SAID LINE ALSO BEING SAID WEST RIGHT-OF-WAY LINE OF 114TH STREET, A DISTANCE OF 1659.02 FEET TO THE NORTHWEST CORNER OF SAID SE1/4 OF SECTION 29; THENCE N87°14'59"E ALONG THE NORTH LINE OF SAID SE1/4 OF SECTION 29, SAID LINE ALSO BEING THE NORTH RIGHT-OF-WAY LINE OF SAID LINCOLN ROAD, A DISTANCE OF 2671.06 FEET TO THE POINT OF BEGINNING.

SAID TRACT OF LAND CONTAINS AN AREA OF 4,283,299 SQUARE FEET OR 98.331 ACRES, MORE OR LESS.

SHEET 1 OF 2 FOR DRAWING

	E & A CONSULTING GROUP, INC. Engineering • Planning • Environmental & Field Services 330 North 117th Street Omaha, NE 68154 Phone: 402.895.4700		DISTRICT BOUNDARY SANITARY & IMPROVEMENT DISTRICT No. 275 SARPY COUNTY, NEBRASKA
	Drawn by: JRS Chkd by:	Date: 07/23/2014	
Job No.: 2004.225.001		SHEET 2 OF 2	