

KEYSTONE GARDENS

A SUBDIVISION OF LOTS 24, 25 & 26, RICHLAND ACRES REPLAT
IN SECTION 5, T.15N., R.12E., DOUGLAS COUNTY, NEBRASKA.

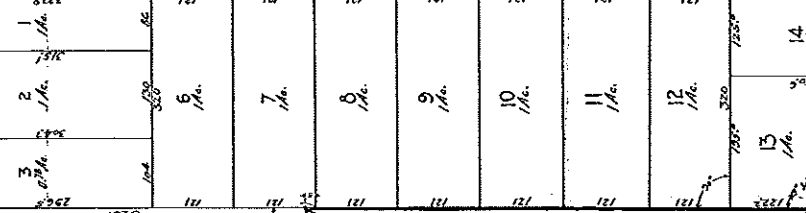
SCALE: 100 FEET TO 1 INCH.

12 RICHLAND ACRES

LOT 6
KEYSTONE
PARK

BOYD ST.

84TH ST.



LOT 18 - RICHLAND ACRES

WEST 1/2 LOT 69 - KEYSTONE PARK
EAST 1/2 LOT 69 - KEYSTONE PARK

X R V O
K E Y S T O N E
P A R K

NOTE:
All surveying done by
T. Nelson & Schwartz
has been approved by
the County Engineer.

County, Nebraska, May 2nd, 1918.
I, the undersigned, County Engineer,
do hereby certify that the above
described plat of the subdivision
of the land in the above
described section of the
County, Nebraska.

T. NELSON & SCHWARTZ,
Surveyors.

Notary Public,
County of Douglas, Nebraska.
I, the undersigned, Notary Public,
do hereby certify that the above
described plat of the subdivision
of the land in the above
described section of the
County, Nebraska, was
correctly and lawfully
prepared and approved by
the County Engineer.

Countess, 508 Edward St., Lincoln,
Nebraska.

Notary Public,
County of Douglas, Nebraska.

Notary Public,
County of Douglas, Nebraska.
I, the undersigned, Notary Public,
do hereby certify that the above
described plat of the subdivision
of the land in the above
described section of the
County, Nebraska, was
correctly and lawfully
prepared and approved by
the County Engineer.

Notary Public,
County of Douglas, Nebraska.

1878

LINDEN AVE.

KEYSTONE PARK 25

Study of plat of the subdivision of the land in the above described section of the County, Nebraska, was made by the undersigned on the 1st day of May, 1918, and the same was found to be correct and lawfully prepared and approved by the County Engineer.

Notary Public,
County of Douglas, Nebraska.

Notary Public,
County of Douglas, Nebraska.

Notary Public,
County of Douglas, Nebraska.