

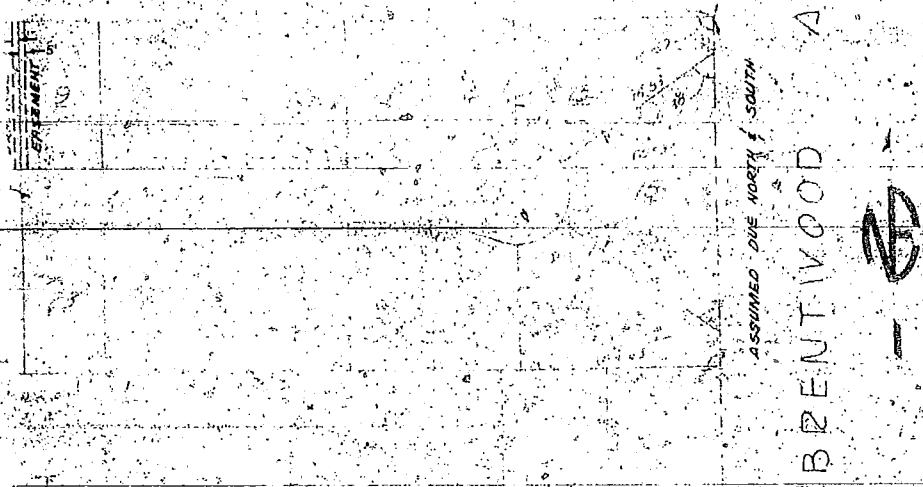
I, Arthur W. Biesendorfer, the duly elected, qualified, and acting Auditor of Pottawattamie County, Iowa do hereby certify that as said County Auditor and as authorized by Sections 408.21 to 409.31, inclusive, Code of Iowa, 1962, I do hereby find that the real estate to which this certification is affixed is more than one mile from the limits of any city and that the owners have dedicated a part of said real estate for public use and endorsed it to the public with certain rights therein and that I have therefore caused to be made a plat of such tract with its several lots numbered consecutively from 1 to 31, inclusive and that I have caused said plat to be recorded in the office of the Pottawattamie County Recorder and in the office of the Pottawattamie County Auditor, this 14th day of September, 1965, that said subdivision is to be hereafter known as John Roth's Addition.

*Arthur W. Biesendorfer*  
County Auditor

STATE OF IOWA )  
POTTAWATTAMIE COUNTY ) SS

Me on this 29th day of September, 1965, before me a Notary Public in and for said County and State, personally appeared Arthur W. Biesendorfer to me known to be the duly elected, qualified and acting Auditor of Pottawattamie County, Iowa, and who acknowledged that he executed the within and foregoing certificate in his official capacity as County Auditor and as the voluntary act and deed of said Auditor.

*Arthur W. Biesendorfer*  
Notary Public



21922

3-14-65  
STATE OF IOWA Pottawattamie County  
Filed for record this 17th day of September  
1965 at 11:20 a.m. by  
in book 1761 page 53  
*James M. Johnson*  
Recorder

AS SHOWN ON THE PLAT  
INSTRUCT AND MAINTAIN  
THE SIDE LOT LINES

JOHN ROTH'S ADDITION  
A SUBDIVISION OF THE  
N 1/2 S 1/2 NE 1/4 SE 1/4 Section 5, T74N,  
R43W of 5th PM, Pottawattamie  
County, Iowa  
MANCIPAL ENGINEERING

*James M. Johnson* SEAL 10 65

COMPARED

COMPARED

UNPLATTED

I, Arthur W. Biesendorfer, the duly elected, qualified and for said County and State, personally appear to me known to be the duly elected, qualified and Pottawattamie County, Iowa, and who acknowledged the within and foregoing Certificate in his official capacity as the County Auditor and as the voluntary act and deed of John Roth's Addition.

*AWB*  
County Auditor

STATE OF IOWA  
POTTAWATTAMIE COUNTY) ss.

Now on this 29th day of September, 1965, before me in and for said County and State, personally appear to me known to be the duly elected, qualified and Pottawattamie County, Iowa, and who acknowledged the within and foregoing Certificate in his official capacity as the County Auditor and as the voluntary act and deed of

*Arthur W. Biesendorfer*  
Notary Public

SEWER  
EASEMENT

CENTER LINE

NOTE: ALL PROPERTY LINES EXTEND TO THE CENTERLINE OF THE ROAD AS SHOWN ON THE PLAT  
AN EASEMENT IS GRANTED TO ALL UTILITY COMPANIES TO CONSTRUCT AND MAINTAIN  
UTILITIES ON OR ACROSS A STRIP FIVE FEET EACH SIDE OF THE SIDE LOT LINES  
AND FIVE FEET INSIDE OF THE REAR LOT LINES.