

2131 339 DEED



12380 99 339-351

Nebr	Doc
Stamp	Tax
8-3-99	
Date	
\$	480.00
By	JS

RICHARD N. TAKECHI
REGISTER OF DEEDS
DOUGLAS COUNTY, NE

99 AUG 31 PM 2:38

RECEIVED

**THIS PAGE INCLUDED FOR INDEXING
PAGE DOWN FOR BALANCE OF INSTRUMENT**

New #
MI-18035

FEE	803	AK	100000
EXP	8-14-12	COMP	BW
DEL	SCAN	dc	PI

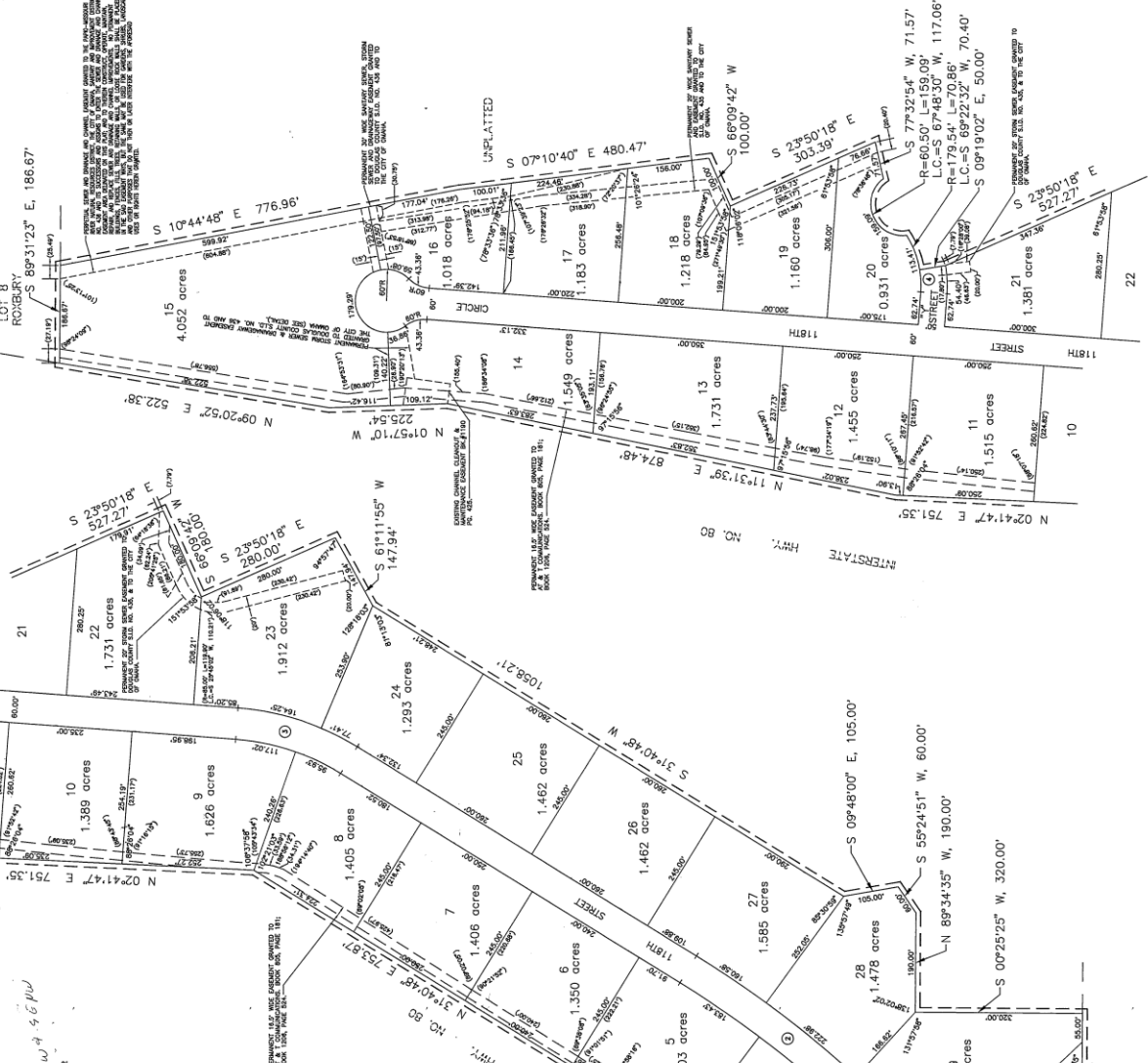


E&A CONSULTING GROUP
 12001 'D' STREET • OMAHA, NE 68137 • (402) 485-4700 • FAX (402) 485-2388

I-80 BUSINESS PARK

FINAL PLAT

DATE	12-09-98
SCALE	1"=100'
PROJECT	98043
REVISION	2
DATE	12-09-98



I-80 BUSINESS PARK
 LOTS 1 THRU 30 INCLUSIVE
 PART OF THE WEST 1/4 OF SECTION 8, TOWNSHIP 45 NORTH, RANGE 12 EAST OF THE 9TH PA., DOUGLASS COUNTY, NEBRASKA

BY: *[Signature]*
 DATE: 12/14/98

BY: *[Signature]*
 DATE: 12/14/98

BY: *[Signature]*
 DATE: 12/14/98

BY: *[Signature]*
 DATE: 12/14/98

BY: *[Signature]*
 DATE: 12/14/98

BY: *[Signature]*
 DATE: 12/14/98

BY: *[Signature]*
 DATE: 12/14/98

BY: *[Signature]*
 DATE: 12/14/98

BY: *[Signature]*
 DATE: 12/14/98

BY: *[Signature]*
 DATE: 12/14/98

BY: *[Signature]*
 DATE: 12/14/98

BY: *[Signature]*
 DATE: 12/14/98

BY: *[Signature]*
 DATE: 12/14/98

BY: *[Signature]*
 DATE: 12/14/98

BY: *[Signature]*
 DATE: 12/14/98

BY: *[Signature]*
 DATE: 12/14/98

BY: *[Signature]*
 DATE: 12/14/98

BY: *[Signature]*
 DATE: 12/14/98

BY: *[Signature]*
 DATE: 12/14/98

BY: *[Signature]*
 DATE: 12/14/98

BY: *[Signature]*
 DATE: 12/14/98

BY: *[Signature]*
 DATE: 12/14/98

BY: *[Signature]*
 DATE: 12/14/98

BY: *[Signature]*
 DATE: 12/14/98

BY: *[Signature]*
 DATE: 12/14/98

BY: *[Signature]*
 DATE: 12/14/98

BY: *[Signature]*
 DATE: 12/14/98

BY: *[Signature]*
 DATE: 12/14/98

BY: *[Signature]*
 DATE: 12/14/98

BY: *[Signature]*
 DATE: 12/14/98

BY: *[Signature]*
 DATE: 12/14/98

BY: *[Signature]*
 DATE: 12/14/98

BY: *[Signature]*
 DATE: 12/14/98

BY: *[Signature]*
 DATE: 12/14/98



NOTES:
 1. ALL DIMENSIONS ARE IN FEET UNLESS OTHERWISE NOTED.
 2. BEARING AND DISTANCE ARE GIVEN IN DEGREES, MINUTES AND SECONDS.
 3. ALL LOT LINES ARE ROUNDED TO CURVED STRAIGHT LINES UNLESS SHOWN AS OTHERWISE.
 4. DIMENSIONS SHOWN WITH DIMENSION LINES ARE FOR THE LOCATION OF EASEMENTS.

DETAIL OF 50' WIDE INGRESS & EGRESS EASEMENT GRANTED TO THE PUBLIC

DETAIL OF STORM SEWER & DRAINAGEWAY EASEMENT

POINT OF BEGINNING

COMMENCING POINT SW COR. SW 1/4 SEC. 8-14-12

1000.00'

N 09°34'35" W

N 89°34'35" W

N 07°24'58" E, 327.85'

N 89°34'35" W

N 02°41'47" E, 228.77'

N 02°41'47" E, 751.35'

N 02°20'52" E, 522.38'

N 01°57'10" W

N 01°57'10" W

N 01°57'10" W

N 01°57'10" W

N 01°57'10" W

N 01°57'10" W

N 01°57'10" W

N 01°57'10" W

N 01°57'10" W

N 01°57'10" W

N 01°57'10" W

N 01°57'10" W

N 01°57'10" W

N 01°57'10" W

N 01°57'10" W

N 01°57'10" W

N 01°57'10" W

N 01°57'10" W

N 01°57'10" W

N 01°57'10" W

N 01°57'10" W

LOT B ROXBURY

S 89°31'23" E, 186.67'

S 10°44'48" E, 776.96'

S 07°10'40" E, 480.47'

S 66°09'42" W, 100.00'

S 23°50'15" E, 303.39'

S 77°32'54" W, 71.57'

R=60.50', L=159.09'

L.C.=S 67°48'30" W, 117.06'

R=179.54', L=70.86'

L.C.=S 69°22'32" W, 70.40'

S 09°19'02" E, 50.00'

S 23°50'15" E, 527.27'

S 02°41'47" E, 751.35'

N 02°41'47" E, 751.35'

N 02°41'47" E, 751.35'

N 02°41'47" E, 751.35'

N 02°41'47" E, 751.35'

N 02°41'47" E, 751.35'

N 02°41'47" E, 751.35'

N 02°41'47" E, 751.35'

N 02°41'47" E, 751.35'

N 02°41'47" E, 751.35'

N 02°41'47" E, 751.35'

N 02°41'47" E, 751.35'

N 02°41'47" E, 751.35'

N 02°41'47" E, 751.35'

N 02°41'47" E, 751.35'

N 02°41'47" E, 751.35'

N 02°41'47" E, 751.35'

N 02°41'47" E, 751.35'

N 02°41'47" E, 751.35'

N 02°41'47" E, 751.35'

N 02°41'47" E, 751.35'

N 02°41'47" E, 751.35'

15

14

13

12

11

10

9

8

7

6

5

4

3

2

1

30

29

28

27

26

25

24

23

22

21

20

19

18

17

16

15

14

13

12

11

10

9

8

7

6

5

4

3

2

1

30

29

28

27

26

25

24

23

22

21

20

19

18

17

16

15

14

13

12

11

10

9

8

7

6

5

4

3

2

1

30

29

28

27

26

25

24

23

22

21

20

19

18

17

16

15

14

13

12

11

10

9

8

7

6

5

4

3

2

1

30

29

28

27

26

25

24

23

22

21

20

19

18

17

16

15

14

13

12

11

10

9

8

7

6

5

4

3

2

1

30

29

28

27

26