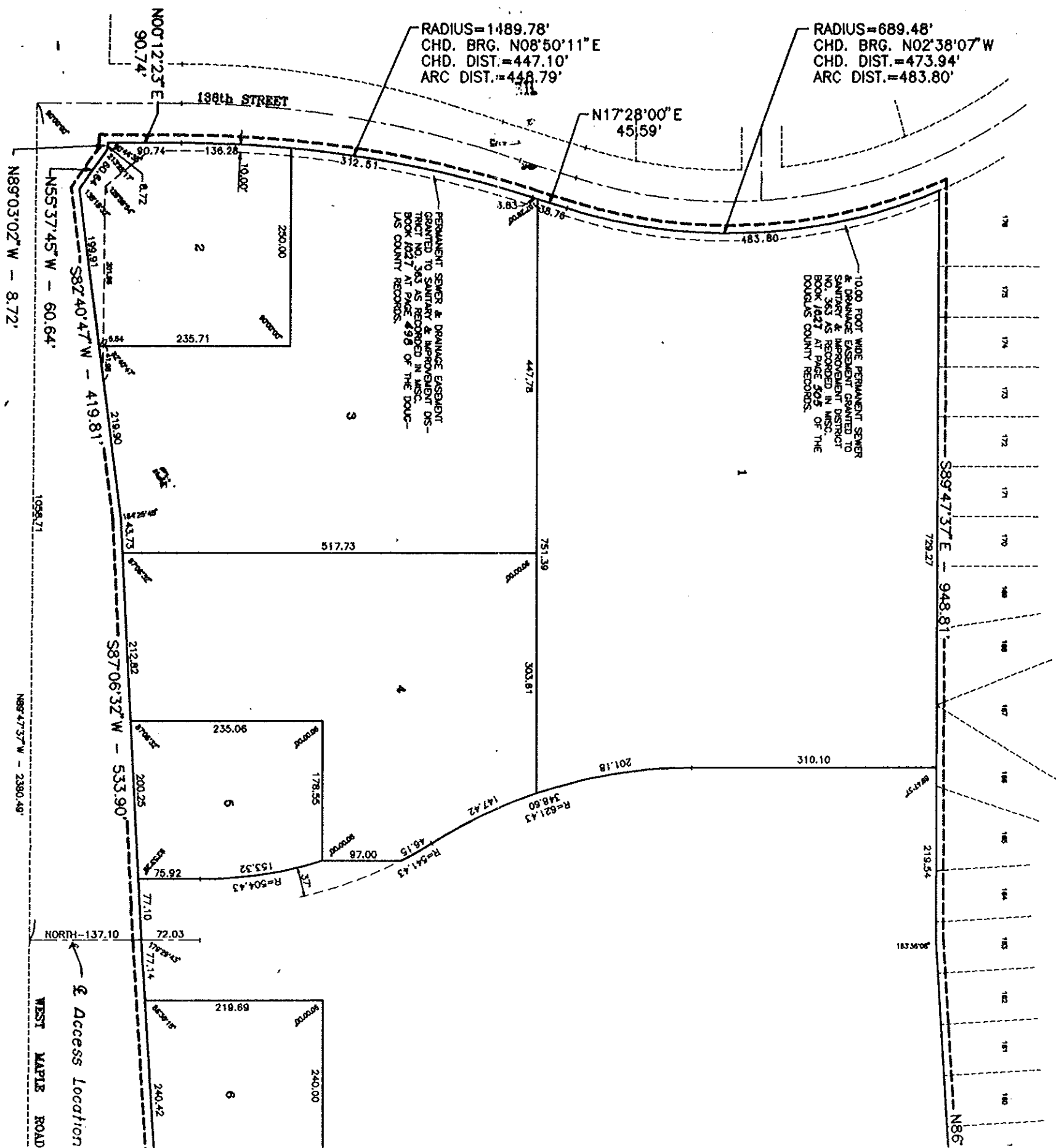


HILLSBOROUGH REPLAT

LOTS 1 THRU 12, INCLUSIVE
 BEING A REPLATTING OF LOTS 540 THRU 550, INCLUSIVE, HILLSBOROUGH,
 A SUBDIVISION AS SURVEYED, PLATTED AND RECORDED IN DOUGLAS COUNTY, NEBRASKA

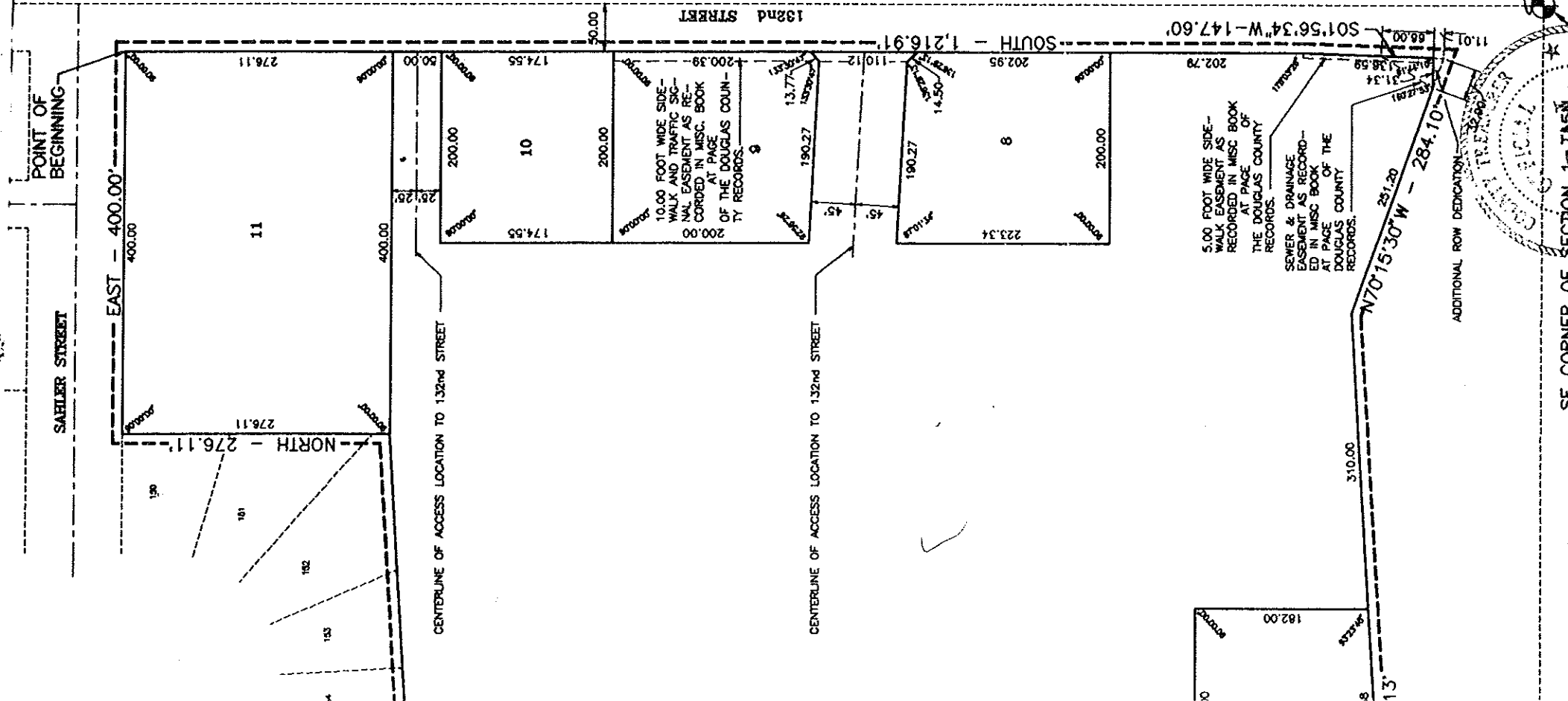


NOTE:
 DIRECT VEHICULAR ACCESS TO WEST MAPLE ROAD FROM LOTS 2, 3,
 4, 5, 6, AND 7 WILL NOT BE PERMITTED.
 DIRECT VEHICULAR ACCESS TO 132ND STREET FROM LOTS 8, 9, 10,
 AND 11 WILL NOT BE PERMITTED.

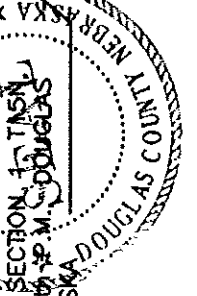
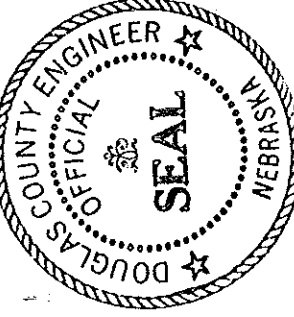
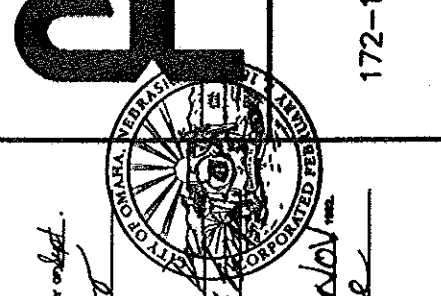
PERPETUAL EASEMENTS ARE GRANTED TO THE WHICH HAS BEEN GRANTED A FRANCHISE TO ASSIGN, TO ERECT, OPERATE, MAINTAIN, REPAIR, LIGHT, HEAT, AND POWER FOR THE TRANSMISSION PROVIDED BY A CABLE TELEVISION SYSTEM AS OF LAND ADJUTING ALL FRONT AND SIDE BOUNDARIES OF ALL INTERIOR LOTS, AND A SIXTEEN LOTS. THE TERM EXTERIOR LOTS IS HEREIN SAID SIXTEEN (16') FOOT WIDE EASEMENT WILL PLATTED AND RECORDED IF SAID SIXTEEN (16') OWNER, NO PERMANENT BUILDINGS, TREES, THE SAME MAY BE USED FOR GARDENS, SHRUBS, INTERFERE WITH THE AFORESAID USES OR RIC

GEORGE J. BOGGS, JR.
REGISTER OF DEEDS
DOUGLAS COUNTY, NE

TYPE Read Plat PG 499 OF 499 MC
FEE 46.57 OF Acad Comp FB 16531-MC
pld MC-16530



MUNICATIONS, INC., AND ANY COMPANY TO BE SUBDIVIDED, THEIR SUCCESSORS AND UTILITY AND ANCHORS, CABLES, CONDUITS AND TRANSMISSION OF ELECTRIC CURRENT FOR THE RECEPTION THEREOF, INCLUDING SIGNALS AND A FIVE (5') FOOT WIDE STRIP OF LAND ADJOINING THE REAR BOUNDARY OF THE ABOVE DESCRIBED ADDITION, WHEN THE ADJACENT LAND IS SURVEYED, PLACED IN THE SAID EASEMENT WAYS, BUT FOR OTHER PURPOSES THAT DO NOT THEN OR LATER



APPROVAL OF CITY ENGINEER:
Scott H. Mancus

APPROVAL OF CITY PLANNING BOARD:
Scott H. Mancus

APPROVAL OF CITY ENGINEER:
Scott H. Mancus

APPROVAL OF CITY ENGINEER:
Scott H. Mancus

APPROVAL OF CITY ENGINEER:
Scott H. Mancus

APPROVAL OF CITY ENGINEER:
Scott H. Mancus

APPROVAL OF CITY ENGINEER:
Scott H. Mancus

APPROVAL OF CITY ENGINEER:
Scott H. Mancus

APPROVAL OF CITY ENGINEER:
Scott H. Mancus

APPROVAL OF CITY ENGINEER:
Scott H. Mancus

APPROVAL OF CITY ENGINEER:
Scott H. Mancus

APPROVAL OF CITY ENGINEER:
Scott H. Mancus

APPROVAL OF CITY ENGINEER:
Scott H. Mancus

APPROVAL OF CITY ENGINEER:
Scott H. Mancus

APPROVAL OF CITY ENGINEER:
Scott H. Mancus

172-121

2 THOMPSON, DRESSSEN & DORNER
Consulting Engineers & Land Surveyors
10836 OLD MILL ROAD
OMAHA, NE 68134
(402) 330-8860

scale:	AS SHOWN
date:	8-8-92
drawn by:	RAH
checked by:	JDW
revision:	

HILLSBOROUGH REPLAT I
FINAL PLAT

I HEREBY CERTIFY THAT I HAVE MADE A MEASUREMENT SURVEY OF THE SUBDIVISION DESCRIBED HEREIN AND THAT SUCH MEASUREMENTS HAVE BEEN FOUND TO BE CORRECT IN ALL PARTICULARS AND THAT THE BOUNDARIES OF SAID SUBDIVISION ARE CORRECTLY LOCATED AND THE MEASUREMENTS ARE CORRECT. I HAVE ALSO FOUND THAT THE SUBDIVISION IS CONFORMANT WITH THE PLAT THEREOF AND THAT THE MEASUREMENTS ARE CORRECT. I HAVE ALSO FOUND THAT THE SUBDIVISION IS CONFORMANT WITH THE PLAT THEREOF AND THAT THE MEASUREMENTS ARE CORRECT.

AUGUST 10, 1992

STATE OF NEBRASKA
REGISTERED PROFESSIONAL ENGINEER
Scott H. Mancus
No. 306

STATE OF NEBRASKA
REGISTERED PROFESSIONAL ENGINEER
Scott H. Mancus
No. 306

STATE OF NEBRASKA
REGISTERED PROFESSIONAL ENGINEER
Scott H. Mancus
No. 306

STATE OF NEBRASKA
REGISTERED PROFESSIONAL ENGINEER
Scott H. Mancus
No. 306

STATE OF NEBRASKA
REGISTERED PROFESSIONAL ENGINEER
Scott H. Mancus
No. 306

STATE OF NEBRASKA
REGISTERED PROFESSIONAL ENGINEER
Scott H. Mancus
No. 306

STATE OF NEBRASKA
REGISTERED PROFESSIONAL ENGINEER
Scott H. Mancus
No. 306

STATE OF NEBRASKA
REGISTERED PROFESSIONAL ENGINEER
Scott H. Mancus
No. 306

STATE OF NEBRASKA
REGISTERED PROFESSIONAL ENGINEER
Scott H. Mancus
No. 306

STATE OF NEBRASKA
REGISTERED PROFESSIONAL ENGINEER
Scott H. Mancus
No. 306

STATE OF NEBRASKA
REGISTERED PROFESSIONAL ENGINEER
Scott H. Mancus
No. 306

STATE OF NEBRASKA
REGISTERED PROFESSIONAL ENGINEER
Scott H. Mancus
No. 306

STATE OF NEBRASKA
REGISTERED PROFESSIONAL ENGINEER
Scott H. Mancus
No. 306

STATE OF NEBRASKA
REGISTERED PROFESSIONAL ENGINEER
Scott H. Mancus
No. 306

STATE OF NEBRASKA
REGISTERED PROFESSIONAL ENGINEER
Scott H. Mancus
No. 306

STATE OF NEBRASKA
REGISTERED PROFESSIONAL ENGINEER
Scott H. Mancus
No. 306

STATE OF NEBRASKA
REGISTERED PROFESSIONAL ENGINEER
Scott H. Mancus
No. 306

STATE OF NEBRASKA
REGISTERED PROFESSIONAL ENGINEER
Scott H. Mancus
No. 306

STATE OF NEBRASKA
REGISTERED PROFESSIONAL ENGINEER
Scott H. Mancus
No. 306

STATE OF NEBRASKA
REGISTERED PROFESSIONAL ENGINEER
Scott H. Mancus
No. 306

STATE OF NEBRASKA
REGISTERED PROFESSIONAL ENGINEER
Scott H. Mancus
No. 306

STATE OF NEBRASKA
REGISTERED PROFESSIONAL ENGINEER
Scott H. Mancus
No. 306

STATE OF NEBRASKA
REGISTERED PROFESSIONAL ENGINEER
Scott H. Mancus
No. 306

STATE OF NEBRASKA
REGISTERED PROFESSIONAL ENGINEER
Scott H. Mancus
No. 306

STATE OF NEBRASKA
REGISTERED PROFESSIONAL ENGINEER
Scott H. Mancus
No. 306

STATE OF NEBRASKA
REGISTERED PROFESSIONAL ENGINEER
Scott H. Mancus
No. 306