

HIGHLAND PARK

LOTS 1 TO 18 INCLUSIVE

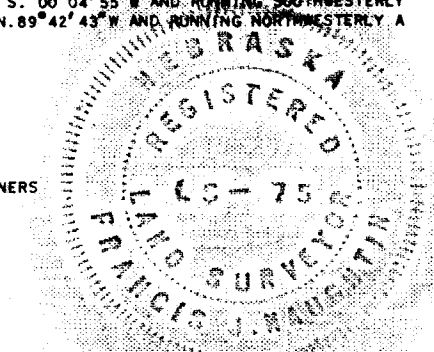
SURVEYOR'S CERTIFICATE

I HEREBY CERTIFY THAT I HAVE ACCURATELY SURVEYED AND STAKED WITH IRON PINS ALL CORNERS OF ALL LOTS AND THE STREET IN THIS PLATING OF LOTS 1 TO 18 INCLUSIVE, HIGHLAND PARK AN ADDITION TO SARPY COUNTY, NEBRASKA AND THAT SAID PLATTING IS A PART OF TAX LOT 9 IN THE NORTHWEST QUARTER (NW 1/4) OF THE NORTHWEST QUARTER (NW 1/4) OF SECTION 35, TOWNSHIP 14 NORTH RANGE 12 EAST OF THE 6TH PRINCIPAL MERIDIAN ALL IN SAID SARPY COUNTY, NEBRASKA, MORE PARTICULARLY DESCRIBED AND BOUNDED AS FOLLOWS:

COMMENCING AT A POINT WHICH IS THE SOUTHWEST CORNER OF SAID NORTHWEST QUARTER (NW 1/4) OF THE NORTHWEST QUARTER (NW 1/4); THENCE ASSUMING THE WEST PROPERTY LINE OF SAID NORTHWEST QUARTER (NW 1/4) OF THE NORTHWEST QUARTER (NW 1/4) TO BE ON A BEARING OF N. 00°04'55"E, ON A BEARING OF S. 89°42'43"E AND RUNNING SOUTHEASTERLY A DISTANCE OF 710.11 FEET TO THE POINT OF BEGINNING; THENCE ON A BEARING OF N. 00°04'55"E AND RUNNING NORTHEASTERLY A DISTANCE OF 736.89 FEET TO A POINT; SAID POINT ALSO BEING A POINT ON THE SOUTH PROPERTY LINE OF VISTA VALLEY ADDITION AN ADDITION TO SARPY COUNTY, NEBRASKA AS SURVEYED, PLATTED AND RECORDED; THENCE ON A BEARING OF N. 90°00'00"E AND RUNNING EAST ALONG THE SOUTH PROPERTY LINE OF SAID VISTA VALLEY ADDITION FOR A DISTANCE OF 280.00 FEET TO A POINT WHICH IS A POINT ON THE WEST PROPERTY LINE OF CARRIAGE HILL SUBDIVISION AN ADDITION TO SARPY COUNTY, NEBRASKA AS SURVEYED, PLATTED AND RECORDED; THENCE ON A BEARING OF S. 89°42'43"E AND RUNNING SOUTHWESTERLY ALONG THE WEST PROPERTY LINE OF SAID CARRIAGE HILL SUBDIVISION FOR A DISTANCE OF 736.30 FEET TO A POINT; THENCE ON A BEARING OF N. 89°42'43"E AND RUNNING NORTHEASTERLY A DISTANCE OF 280.00 FEET TO THE POINT OF BEGINNING.

IN WITNESS WHEREOF I DO HEREUNTO SET MY HAND AND OFFICIAL SEAL AT OMAHA, NEBRASKA ON THIS 11th DAY OF July, 1965 A.D.

Francis J. Naughton
 FRANCIS J. NAUGHTON, S.D. NO. 75
 HENNINGSON, DURHAM & RICHARDSON, INC.
 CONSULTING ENGINEERS, ARCHITECTS & PLANNERS



DEDICATION

KNOW ALL MEN BY THESE PRESENTS THAT THE ELSHIRE INVESTMENT CO., A NEBRASKA CORPORATION BEING SOLE OWNERS AND PROPRIETORS OF THE LAND DESCRIBED IN THE SURVEYOR'S CERTIFICATE AS SHOWN HEREON AND EMBRACED WITHIN THIS PLAT OF LOTS 1 THROUGH 18 INCLUSIVE, HIGHLAND PARK AS SHOWN HEREON, HAVE CAUSED THE SAME TO BE SUBDIVIDED INTO LOTS AND STREETS AS SHOWN AND WE HEREBY RATIFY AND APPROVE OF THE DISPOSITION OF THE PROPERTY AS SHOWN AND WE HEREBY DEDICATE TO THE PUBLIC FOR PUBLIC USE THE STREETS AS SHOWN HEREON AND GRANT STANDARD POWER POLE AND TELEPHONE POLE EASEMENTS AT ALL REAR AND SIDE LOT LINES CONFORMING TO THE REQUIREMENTS OF THE OMAHA PUBLIC POWER DISTRICT, THE ABOVE SUBDIVISION BEING A PART OF TAX LOT 9 IN THE NORTHWEST QUARTER (NW 1/4) OF THE NORTHWEST QUARTER (NW 1/4) OF SECTION 35, TOWNSHIP 14 NORTH RANGE 12 EAST OF THE 6TH PRINCIPAL MERIDIAN AS IT APPEARS ON THIS PLAT IS MADE WITH FREE CONSENT AND IN ACCORDANCE WITH THE DESIRE OF THE UNDERSIGNED OWNERS AND PROPRIETORS.

IN WITNESS WHEREOF THE ELSHIRE INVESTMENT CO. HAVE CAUSED THESE PRESENTS TO BE SIGNED BY T.M. LUNDT PRESIDENT OF THE CORPORATION AND HAVE CAUSED THE CORPORATE SEAL TO BE AFFIXED HERETO.

ELSHIRE INVESTMENT CO., A NEBRASKA CORPORATION

BY: *T.M. Lundt*
 T.M. LUNDT, PRESIDENT
 ATTEST: *M.L. Stevens*
 M.L. STEVENS, SECRETARY

ACKNOWLEDGEMENT

STATE OF NEBRASKA S.S.
 COUNTY OF DOUGLAS

ON THIS 11th DAY OF July, 1965 BEFORE ME A NOTARY PUBLIC, DULY QUALIFIED AND COMMISSIONED, IN AND FOR SAID COUNTY, CAME T.M. LUNDT, PRESIDENT AND THE SECRETARY OF SAID ELSHIRE INVESTMENT CO. AND WHO ARE PERSONALLY KNOWN BY ME TO BE THE SAME AND IDENTICAL PERSONS WHOSE NAMES ARE AFFIXED TO THE ABOVE DEDICATION AND THEY ACKNOWLEDGED THE SIGNING OF THE ABOVE DEDICATION TO BE THEIR VOLUNTARY ACTS AND DEEDS AND THE VOLUNTARY ACT AND DEED OF SAID CORPORATION.

WITNESS MY HAND AND SEAL AT OMAHA, NEBRASKA IN DOUGLAS COUNTY THE DATE LAST AFORESAID.

E.L. Kelle
 E.L. KELLE, NOTARY PUBLIC

MY COMMISSION EXPIRES ON THE 11th DAY OF Oct, A.D. 1970.

MORTGAGE RELEASE

KNOW ALL MEN BY THESE PRESENTS THAT VICTOR L. MATTHIES AND MYRTLE I. MATTHIES HUSBAND AND WIFE, MORTGAGEES UNDER THE MORTGAGE DATED 1-15-1965 RECORDED IN BOOK 150, PAGE 331 OF THE MORTGAGE RECORDS FOR SARPY COUNTY, NEBRASKA DO HEREBY RATIFY AND APPROVE OF THE DISPOSITION OF THE LAND AS DESCRIBED AND SHOWN HEREON IN THIS PLATTING OF LOTS 1 TO 18 INCLUSIVE HIGHLAND PARK AND DO HEREBY RELEASE SAID MORTGAGE ON THE LAND DEDICATED TO THE PUBLIC FOR PUBLIC USE AS SHOWN HEREON WITHOUT PREJUDICE TO THE LIEU OF THE MORTGAGE ON THE BALANCE OF THE LAND DESCRIBED HEREON.

IN WITNESS WHEREOF WE DO HEREUNTO SET OUR HANDS ON THIS 22nd DAY OF July, A.D. 1965.

Victor L. Matthies
 VICTOR L. MATTHIES (HUSBAND)

Myrtle I. Matthies
 MYRTLE I. MATTHIES (WIFE)

ACKNOWLEDGEMENT

STATE OF NEBRASKA S.S.
 COUNTY OF SARPY

ON THIS 22nd DAY OF July, A.D. 1965 BEFORE ME A NOTARY PUBLIC DULY COMMISSIONED AND QUALIFIED IN AND FOR SAID COUNTY, CAME VICTOR L. MATTHIES HUSBAND AND MYRTLE I. MATTHIES WIFE AND WHO ARE PERSONALLY KNOWN BY ME TO BE THE SAME AND IDENTICAL PERSONS WHOSE NAMES ARE AFFIXED TO THE ABOVE MORTGAGE RELEASE AND THEY ACKNOWLEDGE THE EXECUTION THEREOF TO BE THEIR VOLUNTARY ACTS AND DEEDS.

WITNESS MY HAND AND OFFICIAL SEAL AT PAVILLION, NEBRASKA IN SAID COUNTY, THE DATE LAST AFORESAID.

Samuel S. Muth
 SAMUEL S. MUTH, NOTARY PUBLIC

MY COMMISSION EXPIRES ON THE 14th DAY OF June, A.D. 1975.

COUNTY TREASURER'S CERTIFICATE

THIS IS TO CERTIFY THAT I FIND NO REGULAR OR SPECIAL TAXES DUE OR DELINQUENT AGAINST THE PROPERTY DESCRIBED IN THE SURVEYOR'S CERTIFICATE AND EMBRACED WITHIN THIS PLAT AS SHOWN BY THE RECORDS OF THIS OFFICE.

DATE July 16, 1965.

Robert E. ...
 COUNTY TREASURER, SARPY COUNTY

APPROVAL OF SARPY COUNTY SURVEYOR

I HEREBY APPROVE THIS PLATTING OF LOTS 1 TO 18 INCLUSIVE, HIGHLAND PARK ON THIS 11th DAY OF July, A.D. 1965.

Norman Whitney
 NORMAN WHITNEY, COUNTY SURVEYOR, SARPY COUNTY

APPROVAL OF BOARD OF EDUCATION

THIS PLATTING OF LOTS 1 TO 18 INCLUSIVE, HIGHLAND PARK WAS APPROVED BY THE BOARD OF EDUCATION OF SCHOOL DISTRICT 27 OF SARPY COUNTY, NEBRASKA ON THIS 7th DAY OF July, 1965.

BY: *Harold ...* ATTEST: *Harold ...*
 PRESIDENT SCHOOL BOARD SECRETARY
 DISTRICT 27

APPROVAL OF PAVILLION CITY PLANNING BOARD

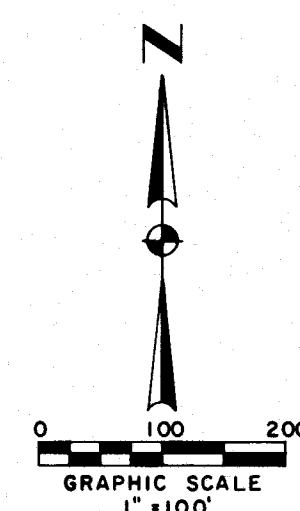
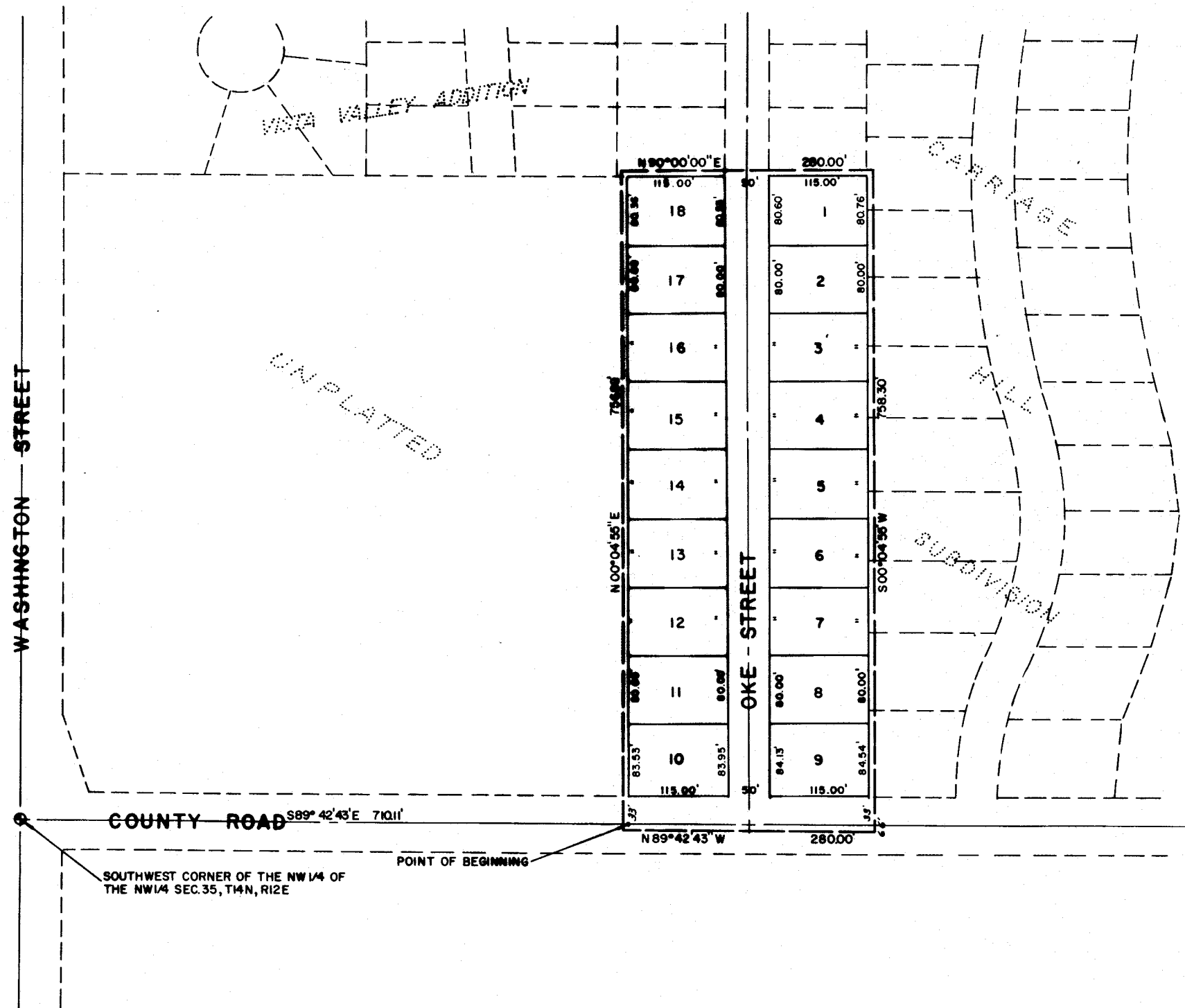
THIS PLATTING OF LOTS 1 TO 18 INCLUSIVE, HIGHLAND PARK WAS APPROVED BY THE CITY PLANNING BOARD OF THE CITY OF PAVILLION, NEBRASKA ON THIS 11th DAY OF July, A.D. 1965.

Harold ...
 CHAIRMAN OF CITY PLANNING BOARD
 PAVILLION, NEBRASKA

PAVILLION CITY COUNCIL ACCEPTANCE

THIS PLATTING OF LOTS 1 TO 18 INCLUSIVE, HIGHLAND PARK WAS APPROVED AND ACCEPTED BY THE CITY COUNCIL OF THE CITY OF PAVILLION, NEBRASKA ON THIS 11th DAY OF July, A.D. 1965.

Robert ... ATTEST: *Robert ...*
 CITY CLERK PAVILLION, NEBRASKA



THIS DRAWINGS HAS BEEN REDUCED

FILED FOR RECORD IN SARPY COUNTY NEBR. Aug 21 1965 AT 3:45 O'CLOCK P.M.
 AND RECORDED IN BOOK 4 OF Plate PAGE 91 *Bliss ...* REGISTER OF DEEDS