

HIGHLAND NORTH

BEING A PLATTING OF PART OF THE SOUTH 1/4 OF SECTION 34, T11N, R6E, PART OF THE WEST 1/4 OF SECTION 2, T10N, R6E, AND PART OF SECTION 3, T10N, R6E OF THE 6TH P.M., LANCASTER COUNTY, NEBRASKA.

DEDICATION

The foregoing plat, Highland North, as described in the surveyor's certificate, and those vacated portions of W. Fletcher, N 1st St. and Euclid St., is made with the free consent and in accordance with the desires of the undersigned Owners and/or Mortgagees and the easements shown thereon are hereby dedicated to the public for the use of the public. All easements are shown on the plat. Direct vehicular access from abutting single family lots on West Fletcher is prohibited.

In witness whereof we do hereunto set our hands this 7TH day of MARCH, 1977

HIGHLANDS DEVELOPMENT CORPORATION

LANCASTER COUNTY SANITARY & IMPROVEMENT DIST. NO. 7

Joel M. Katleman
Joel M. Katleman, President

John M. Katleman
CHAIRMAN, Abt'd Board

ACKNOWLEDGEMENTS OF NOTARY

STATE OF NEBRASKA }
COUNTY OF LANCASTER } SS

On this 7th day of March, 1977, before me, a Notary Public duly commissioned and qualified in and for said county, personally came Joel M. Katleman and Gordon L. Miles, President and Secretary, respectively of Highlands Development Corporation, personally known to me to be the identical persons whose names are affixed to the dedication of this Plat, and they acknowledged the execution thereof to be their voluntary act and deed and the voluntary act and deed of said corporation, and the seal of said corporation was thereto affixed by its authority.

Witness my hand and notary seal on the date last aforesaid.

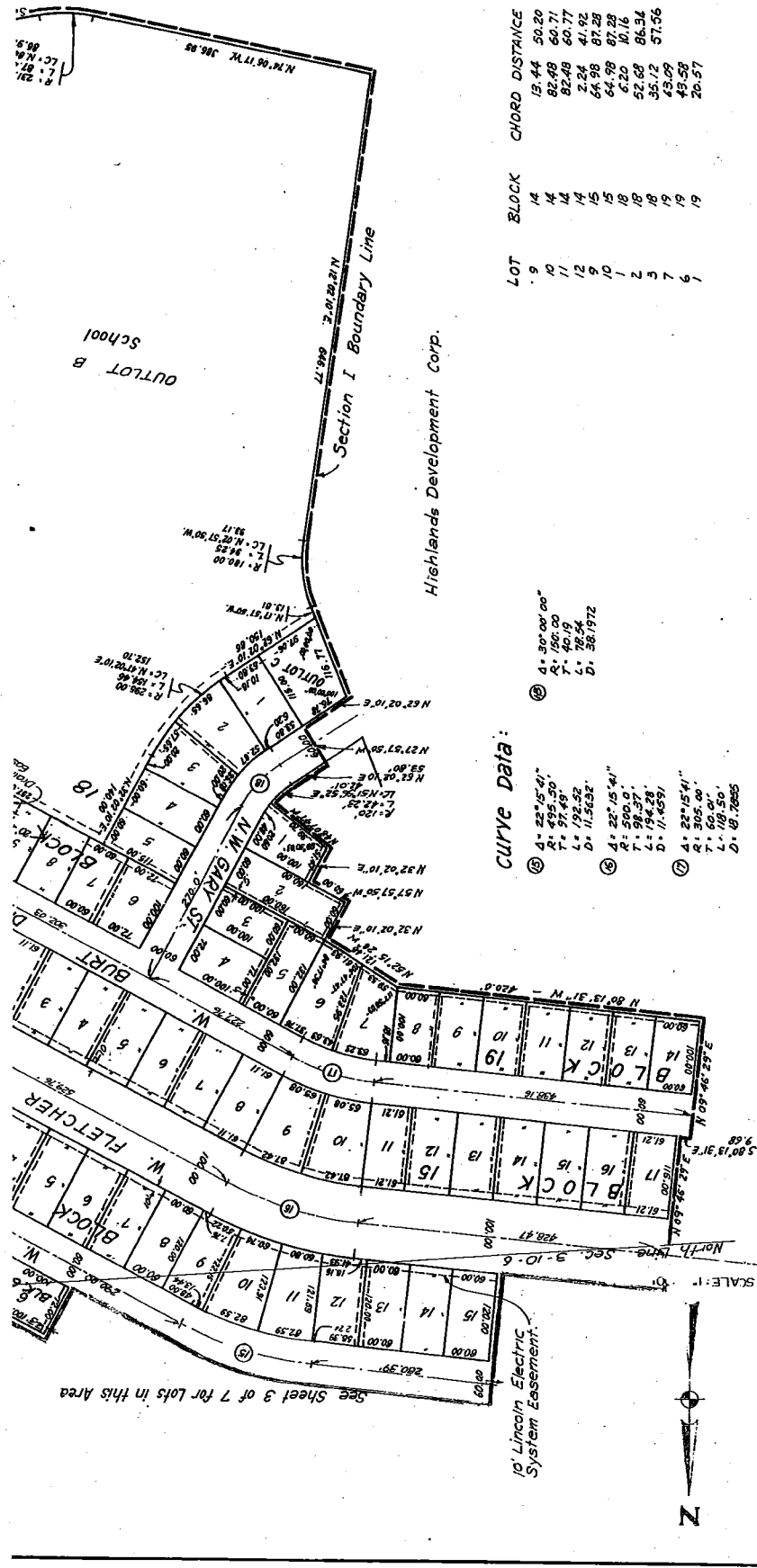
My Commission expires May 24, 1979

William D. Orr
Notary Public

I b
at
lin
tha
the
cor
wil
fin
fil
TIL
R6E

ACKNOWLEDGEMENTS OF NOTARY

STATE OF NEBRASKA }
COUNTY OF LANCASTER } SS



LOT	BLOCK	CHORD DISTANCE
9	14	13.44
10	14	82.49
11	14	82.49
12	14	2.24
13	15	64.98
14	15	64.98
15	15	6.20
16	18	52.69
17	18	35.72
18	19	43.09
19	19	49.59
20	19	20.57

- CURVE DATA:**
- ④ Δ = 30° 00' 00"
R = 150.00'
L = 40.19'
D = 361.972
 - ⑤ Δ = 23° 15' 41"
R = 575.30'
L = 192.52'
D = 11,563.2'
 - ⑥ Δ = 22° 15' 41"
R = 590.0'
L = 98.338'
D = 11,459'
 - ⑦ Δ = 22° 15' 41"
R = 305.00'
L = 60.00'
D = 18,7895