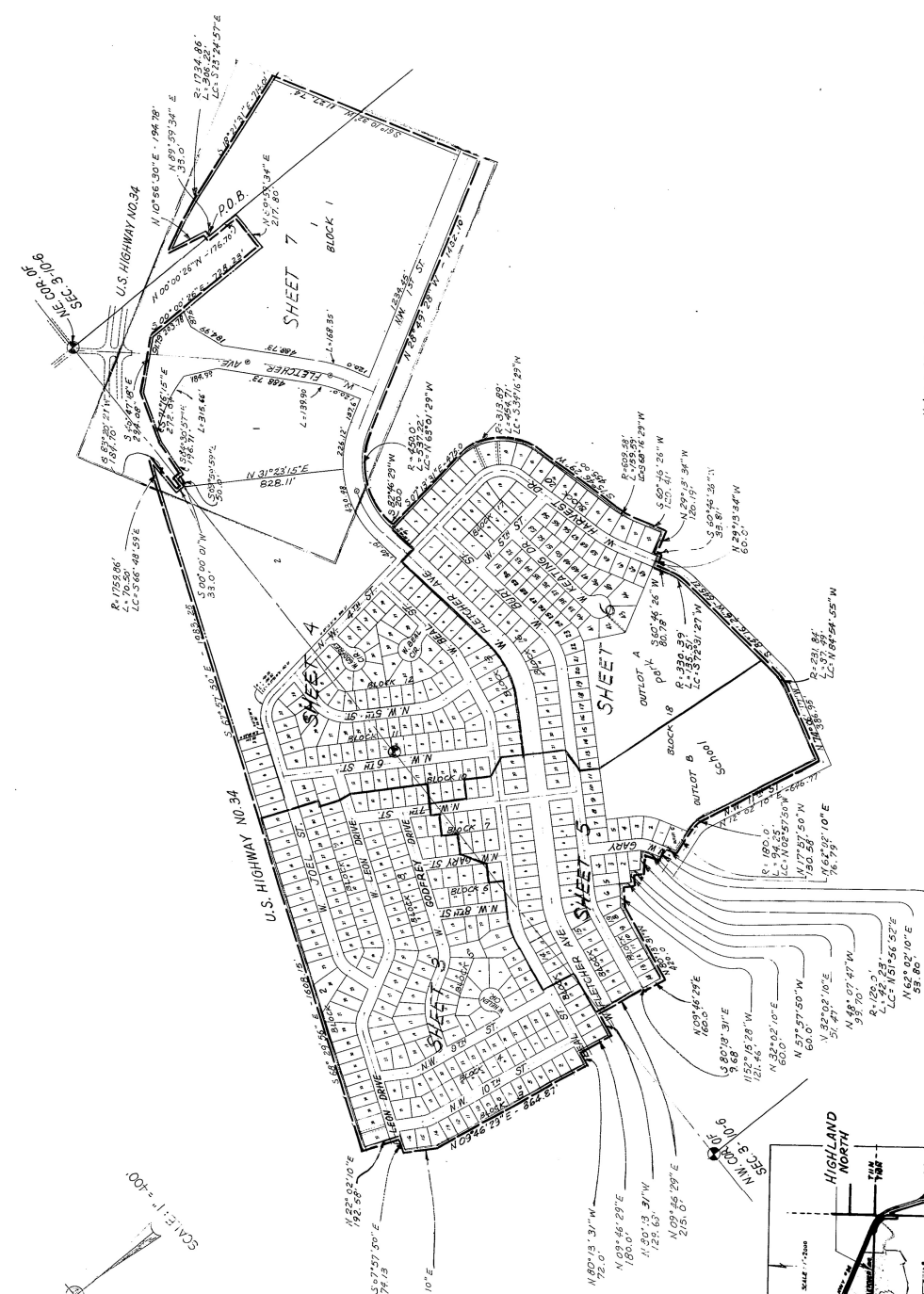
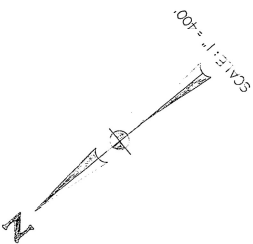
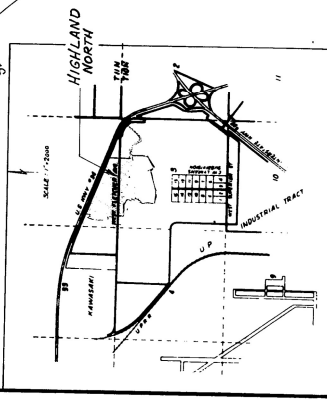




# HIGHLAND NORTH



Notes: 1. All dimensions are arc measurements unless otherwise shown and are in feet and decimals of a foot.  
 2. All angles or bearings are 90° unless otherwise designated.  
 3. All bearings and distances are 2017 International corner. 1015 have their first bearings on each street side.



# 77-5200

# HIGHLAND NORTH

LOT	CHORD DISTANCE
1	100.00
2	100.00
3	100.00
4	100.00
5	100.00
6	100.00
7	100.00
8	100.00
9	100.00
10	100.00
11	100.00
12	100.00
13	100.00
14	100.00
15	100.00
16	100.00
17	100.00
18	100.00
19	100.00
20	100.00
21	100.00
22	100.00
23	100.00
24	100.00
25	100.00
26	100.00
27	100.00
28	100.00
29	100.00
30	100.00
31	100.00
32	100.00
33	100.00
34	100.00
35	100.00
36	100.00
37	100.00
38	100.00
39	100.00
40	100.00
41	100.00
42	100.00
43	100.00
44	100.00
45	100.00
46	100.00
47	100.00
48	100.00
49	100.00
50	100.00
51	100.00
52	100.00
53	100.00
54	100.00
55	100.00
56	100.00
57	100.00
58	100.00
59	100.00
60	100.00
61	100.00
62	100.00
63	100.00
64	100.00
65	100.00
66	100.00
67	100.00
68	100.00
69	100.00
70	100.00
71	100.00
72	100.00
73	100.00
74	100.00
75	100.00
76	100.00
77	100.00
78	100.00
79	100.00
80	100.00
81	100.00
82	100.00
83	100.00
84	100.00
85	100.00
86	100.00
87	100.00
88	100.00
89	100.00
90	100.00
91	100.00
92	100.00
93	100.00
94	100.00
95	100.00
96	100.00
97	100.00
98	100.00
99	100.00
100	100.00

LOT	BLOCK	CHORD DISTANCE
1	1	100.00
2	1	100.00
3	1	100.00
4	1	100.00
5	1	100.00
6	1	100.00
7	1	100.00
8	1	100.00
9	1	100.00
10	1	100.00
11	1	100.00
12	1	100.00
13	1	100.00
14	1	100.00
15	1	100.00
16	1	100.00
17	1	100.00
18	1	100.00
19	1	100.00
20	1	100.00
21	1	100.00
22	1	100.00
23	1	100.00
24	1	100.00
25	1	100.00
26	1	100.00
27	1	100.00
28	1	100.00
29	1	100.00
30	1	100.00
31	1	100.00
32	1	100.00
33	1	100.00
34	1	100.00
35	1	100.00
36	1	100.00
37	1	100.00
38	1	100.00
39	1	100.00
40	1	100.00
41	1	100.00
42	1	100.00
43	1	100.00
44	1	100.00
45	1	100.00
46	1	100.00
47	1	100.00
48	1	100.00
49	1	100.00
50	1	100.00
51	1	100.00
52	1	100.00
53	1	100.00
54	1	100.00
55	1	100.00
56	1	100.00
57	1	100.00
58	1	100.00
59	1	100.00
60	1	100.00
61	1	100.00
62	1	100.00
63	1	100.00
64	1	100.00
65	1	100.00
66	1	100.00
67	1	100.00
68	1	100.00
69	1	100.00
70	1	100.00
71	1	100.00
72	1	100.00
73	1	100.00
74	1	100.00
75	1	100.00
76	1	100.00
77	1	100.00
78	1	100.00
79	1	100.00
80	1	100.00
81	1	100.00
82	1	100.00
83	1	100.00
84	1	100.00
85	1	100.00
86	1	100.00
87	1	100.00
88	1	100.00
89	1	100.00
90	1	100.00
91	1	100.00
92	1	100.00
93	1	100.00
94	1	100.00
95	1	100.00
96	1	100.00
97	1	100.00
98	1	100.00
99	1	100.00
100	1	100.00

**Curve Data**

①	A = 45°01'00"
	R = 160.0'
	T = 54.60'
	L = 104.72'
	D = 38.1572'
②	A = 22°15'41"
	R = 100.0'
	T = 38.28'
	L = 76.56'
	D = 24.5144'
③	A = 41°05'41"
	R = 265.0'
	T = 100.0'
	L = 191.28'
	D = 21.5714'



77-5200

# HIGHLAND NORTH



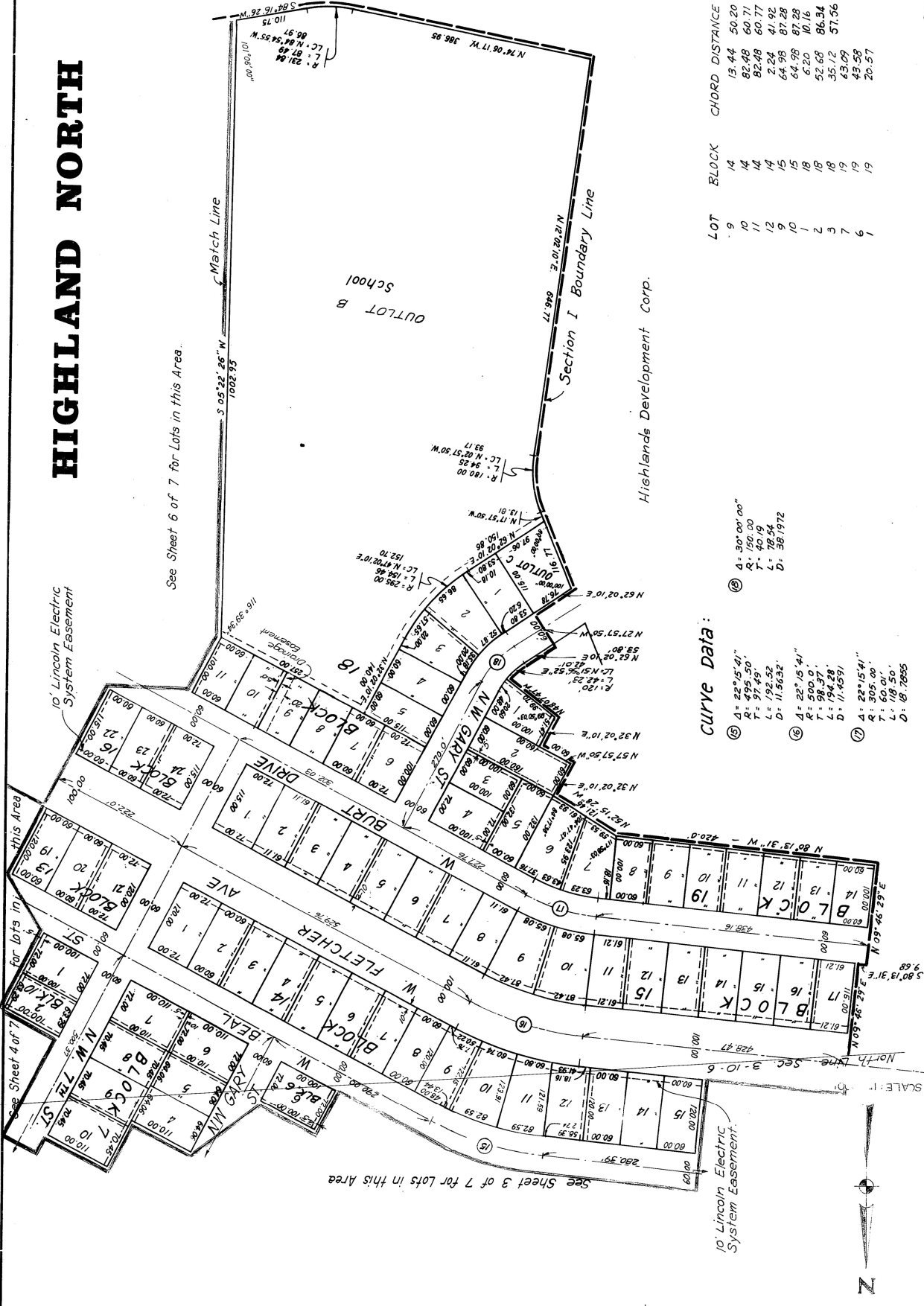
LOT	BLOCK	CHORD DISTANCE
20	12	42.36
21	12	48.31
22	12	54.26
23	12	60.21
24	12	66.16
25	12	72.11
26	12	78.06
27	12	84.01
28	12	90.00
29	12	95.95
30	12	101.90
31	12	107.85
32	12	113.80
33	12	119.75
34	12	125.70
35	12	131.65
36	12	137.60
37	12	143.55
38	12	149.50
39	12	155.45
40	12	161.40
41	12	167.35
42	12	173.30
43	12	179.25
44	12	185.20
45	12	191.15
46	12	197.10
47	12	203.05
48	12	209.00
49	12	214.95
50	12	220.90
51	12	226.85
52	12	232.80
53	12	238.75
54	12	244.70
55	12	250.65
56	12	256.60
57	12	262.55
58	12	268.50
59	12	274.45
60	12	280.40
61	12	286.35
62	12	292.30
63	12	298.25
64	12	304.20
65	12	310.15
66	12	316.10
67	12	322.05
68	12	328.00
69	12	333.95
70	12	339.90
71	12	345.85
72	12	351.80
73	12	357.75
74	12	363.70
75	12	369.65
76	12	375.60
77	12	381.55
78	12	387.50
79	12	393.45
80	12	399.40
81	12	405.35
82	12	411.30
83	12	417.25
84	12	423.20
85	12	429.15
86	12	435.10
87	12	441.05
88	12	447.00
89	12	452.95
90	12	458.90
91	12	464.85
92	12	470.80
93	12	476.75
94	12	482.70
95	12	488.65
96	12	494.60
97	12	500.55
98	12	506.50
99	12	512.45
100	12	518.40
101	12	524.35
102	12	530.30
103	12	536.25
104	12	542.20
105	12	548.15
106	12	554.10
107	12	560.05
108	12	566.00
109	12	571.95
110	12	577.90
111	12	583.85
112	12	589.80
113	12	595.75
114	12	601.70
115	12	607.65
116	12	613.60
117	12	619.55
118	12	625.50
119	12	631.45
120	12	637.40
121	12	643.35
122	12	649.30
123	12	655.25
124	12	661.20
125	12	667.15
126	12	673.10
127	12	679.05
128	12	685.00
129	12	690.95
130	12	696.90
131	12	702.85
132	12	708.80
133	12	714.75
134	12	720.70
135	12	726.65
136	12	732.60
137	12	738.55
138	12	744.50
139	12	750.45
140	12	756.40
141	12	762.35
142	12	768.30
143	12	774.25
144	12	780.20
145	12	786.15
146	12	792.10
147	12	798.05
148	12	804.00
149	12	809.95
150	12	815.90
151	12	821.85
152	12	827.80
153	12	833.75
154	12	839.70
155	12	845.65
156	12	851.60
157	12	857.55
158	12	863.50
159	12	869.45
160	12	875.40
161	12	881.35
162	12	887.30
163	12	893.25
164	12	899.20
165	12	905.15
166	12	911.10
167	12	917.05
168	12	923.00
169	12	928.95
170	12	934.90
171	12	940.85
172	12	946.80
173	12	952.75
174	12	958.70
175	12	964.65
176	12	970.60
177	12	976.55
178	12	982.50
179	12	988.45
180	12	994.40
181	12	1000.35
182	12	1006.30
183	12	1012.25
184	12	1018.20
185	12	1024.15
186	12	1030.10
187	12	1036.05
188	12	1042.00
189	12	1047.95
190	12	1053.90
191	12	1059.85
192	12	1065.80
193	12	1071.75
194	12	1077.70
195	12	1083.65
196	12	1089.60
197	12	1095.55
198	12	1101.50
199	12	1107.45
200	12	1113.40

LOT	BLOCK	CHORD DISTANCE
3	11	46.62
22	11	121.34
23	11	60.39
24	11	60.39
25	11	60.39
26	11	60.39
27	11	60.39
28	11	60.39
29	11	60.39
30	11	60.39
31	11	60.39
32	11	60.39
33	11	60.39
34	11	60.39
35	11	60.39
36	11	60.39
37	11	60.39
38	11	60.39
39	11	60.39
40	11	60.39
41	11	60.39
42	11	60.39
43	11	60.39
44	11	60.39
45	11	60.39
46	11	60.39
47	11	60.39
48	11	60.39
49	11	60.39
50	11	60.39
51	11	60.39
52	11	60.39
53	11	60.39
54	11	60.39
55	11	60.39
56	11	60.39
57	11	60.39
58	11	60.39
59	11	60.39
60	11	60.39
61	11	60.39
62	11	60.39
63	11	60.39
64	11	60.39
65	11	60.39
66	11	60.39
67	11	60.39
68	11	60.39
69	11	60.39
70	11	60.39
71	11	60.39
72	11	60.39
73	11	60.39
74	11	60.39
75	11	60.39
76	11	60.39
77	11	60.39
78	11	60.39
79	11	60.39
80	11	60.39
81	11	60.39
82	11	60.39
83	11	60.39
84	11	60.39
85	11	60.39
86	11	60.39
87	11	60.39
88	11	60.39
89	11	60.39
90	11	60.39
91	11	60.39
92	11	60.39
93	11	60.39
94	11	60.39
95	11	60.39
96	11	60.39
97	11	60.39
98	11	60.39
99	11	60.39
100	11	60.39
101	11	60.39
102	11	60.39
103	11	60.39
104	11	60.39
105	11	60.39
106	11	60.39
107	11	60.39
108	11	60.39
109	11	60.39
110	11	60.39
111	11	60.39
112	11	60.39
113	11	60.39
114	11	60.39
115	11	60.39
116	11	60.39
117	11	60.39
118	11	60.39
119	11	60.39
120	11	60.39

LOT	BLOCK	CHORD DISTANCE
3	11	46.62
22	11	121.34
23	11	60.39
24	11	60.39
25	11	60.39
26	11	60.39
27	11	60.39
28	11	60.39
29	11	60.39
30	11	60.39
31	11	60.39
32	11	60.39
33	11	60.39
34	11	60.39
35	11	60.39
36	11	60.39
37	11	60.39
38	11	60.39
39	11	60.39
40	11	60.39
41	11	60.39
42	11	60.39
43	11	60.39
44	11	60.39
45	11	60.39
46	11	60.39
47	11	60.39
48	11	60.39
49	11	60.39
50	11	60.39
51	11	60.39
52	11	60.39
53	11	60.39
54	11	60.39
55	11	60.39
56	11	60.39
57	11	60.39
58	11	60.39
59	11	60.39
60	11	60.39
61	11	60.39
62	11	60.39
63	11	60.39
64	11	60.39
65	11	60.39
66	11	60.39
67	11	60.39
68	11	60.39
69	11	60.39
70	11	60.39
71	11	60.39
72	11	60.39
73	11	60.39
74	11	60.39
75	11	60.39
76	11	60.39
77	11	60.39
78	11	60.39
79	11	60.39
80	11	60.39
81	11	60.39
82	11	60.39
83	11	60.39
84	11	60.39
85	11	60.39
86	11	60.39
87	11	60.39
88	11	60.39
89	11	60.39
90	11	60.39
91	11	60.39
92	11	60.39
93	11	60.39
94	11	60.39
95	11	60.39
96	11	60.39
97	11	60.39
98	11	60.39
99	11	60.39
100	11	60.39
101	11	60.39
102	11	60.39
103	11	60.39
104	11	60.39
105	11	60.39
106	11	60.39
107	11	60.39
108	11	60.39
109	11	60.39
110	11	60.39
111	11	60.39
112	11	60.39
113	11	60.39
114	11	60.39
115	11	60.39
116	11	60.39
117	11	60.39
118	11	60.39
119	11	60.39
120	11	60.39

LOT	BLOCK	CHORD DISTANCE
20	12	42.36
21	12	48.31
22	12	54.26
23	12	60.21
24	12	66.16
25	12	72.11
26	12	78.06
27	12	84.01
28	12	90.00
29	12	95.95
30	12	101.90
31	12	107.85
32	12	113.80
33	12	119.75
34	12	125.70
35	12	131.65
36	12	137.60
37	12	143.55
38	12	149.50
39	12	

# HIGHLAND NORTH



**Curve Data:**

LOT	BLOCK	CHORD DISTANCE
9	14	13.44
10	14	82.48
11	14	82.48
12	14	2.24
9	15	64.98
10	15	64.98
1	18	6.20
2	18	52.68
3	18	35.12
7	19	43.09
19	19	43.58
6	19	20.57

⑤	Δ: 22°15'41"
	R: 495.50'
	T: 97.45'
	L: 192.52'
	D: 11,563.2'
⑥	Δ: 22°15'41"
	R: 500.0'
	T: 98.37'
	L: 194.28'
	D: 11,459.1'
⑦	Δ: 22°15'41"
	R: 305.00'
	T: 60.00'
	L: 118.50'
	D: 18,785.5'
⑧	Δ: 30°00'00"
	R: 150.00'
	T: 40.19'
	L: 76.54'
	D: 58,197.2'



SCALE: 1" = 100'

See Sheet 3 of 7 for Lots in this Area

for lots in this Area

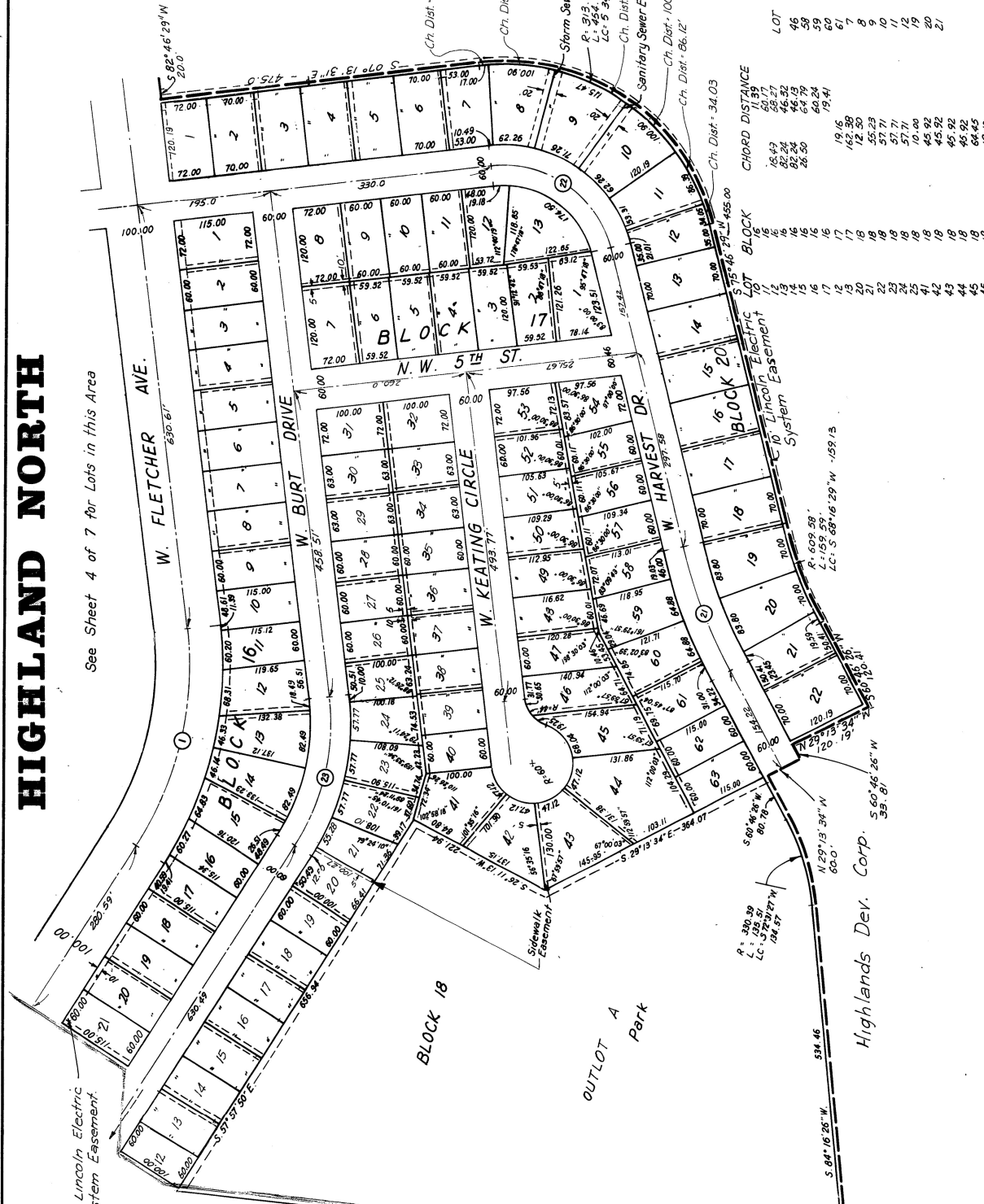
See Sheet 6 of 7 for Lots in this Area

77-5200

# HIGHLAND NORTH

See Sheet 4 of 7 for Lots in this Area

- Curve Data**
- ①  $\Delta: 39^{\circ}15'41''$   
 $R: 500.00'$   
 $T: 178.34'$   
 $L: 342.62'$   
 $D: 11.4592$
  - ②  $\Delta: 15^{\circ}00'00''$   
 $R: 759.77'$   
 $T: 100.03'$   
 $L: 198.91'$   
 $D: 7.5412$
  - ③  $\Delta: 89^{\circ}00'00''$   
 $R: 163.70'$   
 $T: 144.83'$   
 $L: 237.14'$   
 $D: 35.0004$
  - ④  $\Delta: 99^{\circ}15'14''$   
 $R: 336.23'$   
 $T: 120.00'$   
 $L: 230.54'$   
 $D: 17.0305$



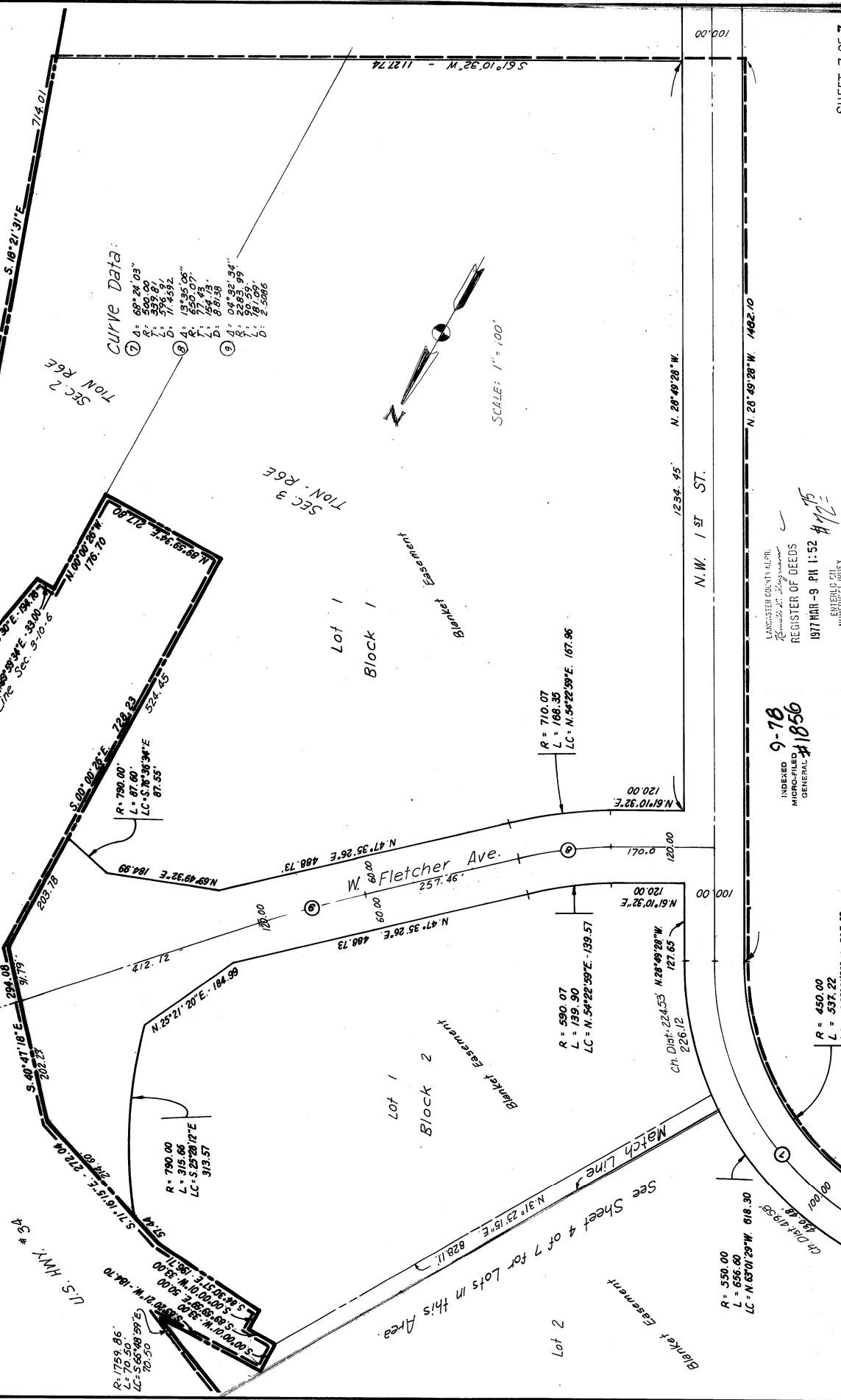
See Sheet 5 of 7 for Lots in this Area

LOT	BLOCK	CHORD DISTANCE
1	18	30.92
2	18	30.92
3	18	64.86
4	18	64.86
5	18	31.00
6	18	31.00
7	18	67.99
8	18	67.99
9	18	20.99
10	18	20.99
11	18	59.14
12	18	59.14
13	18	21.00
14	18	21.00
15	18	83.75
16	18	83.75
17	18	69.96
18	18	69.96
19	18	23.45
20	18	23.45
21	18	19.59
22	18	19.59
23	18	19.59
24	18	19.59
25	18	19.59
26	18	19.59
27	18	19.59
28	18	19.59
29	18	19.59
30	18	19.59
31	18	19.59
32	18	19.59
33	18	19.59
34	18	19.59
35	18	19.59
36	18	19.59
37	18	19.59
38	18	19.59
39	18	19.59
40	18	19.59
41	18	19.59
42	18	19.59
43	18	19.59
44	18	19.59
45	18	19.59

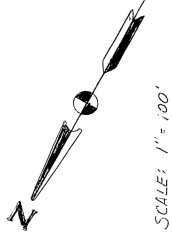
# 77-5200

**HIGHLAND NORTH**

U. S. HWY. # 54



**Curve Data:**  
 ① R = 68°24'03"  
 L = 500.00  
 LC = S 55°21' E 714.01  
 ② R = 19°35'06"  
 L = 550.07  
 LC = S 77°53' E 714.01  
 ③ R = 04°22'34"  
 L = 2283.99  
 LC = S 70°59' E 2506.6



LANCASTER COUNTY, PA  
 REGISTER OF DEEDS  
 1977 MAR - 9 PM 1:52  
 INDEXED FILED  
 GENERAL #1856  
 FILED FOR RECORD AS:  
 INST. NO. 77 - 5200

INDEXED  
 MICRO-FILED  
 GENERAL #1856

77-5200