

68999c-0002

FILED SAPPY CO. NE.  
INSTRUMENT NUMBER  
2000 - 25624  
2000 OCT 11 PM 4:07  
REGISTER OF DEEDS

Gourner, K.K.  
Verify  
D.E.  
Proof  
Fee \$ 100.00  
Ch 180 Gain 0 0 0  
67998

E&A CONSULTING GROUP, INC.  
ENGINEERS • PLANNERS • SURVEYORS  
7120 SOUTH 28TH STREET, SUITE 100  
MIDLAND, NEBRASKA 68901  
PHONE (402) 488-2200  
FAX (402) 488-2218

HICKORY RIDGE  
LOTS 274 THRU 566 INCLUSIVE & OUTLOT "A"  
SAPPY COUNTY, NEBRASKA

FINAL PLAT

Project No. 2000.2  
Scale: 1" = 40'-0"  
Drawn By: [Signature]  
Checked By: [Signature]  
Date: 10/10/00

# HICKORY RIDGE

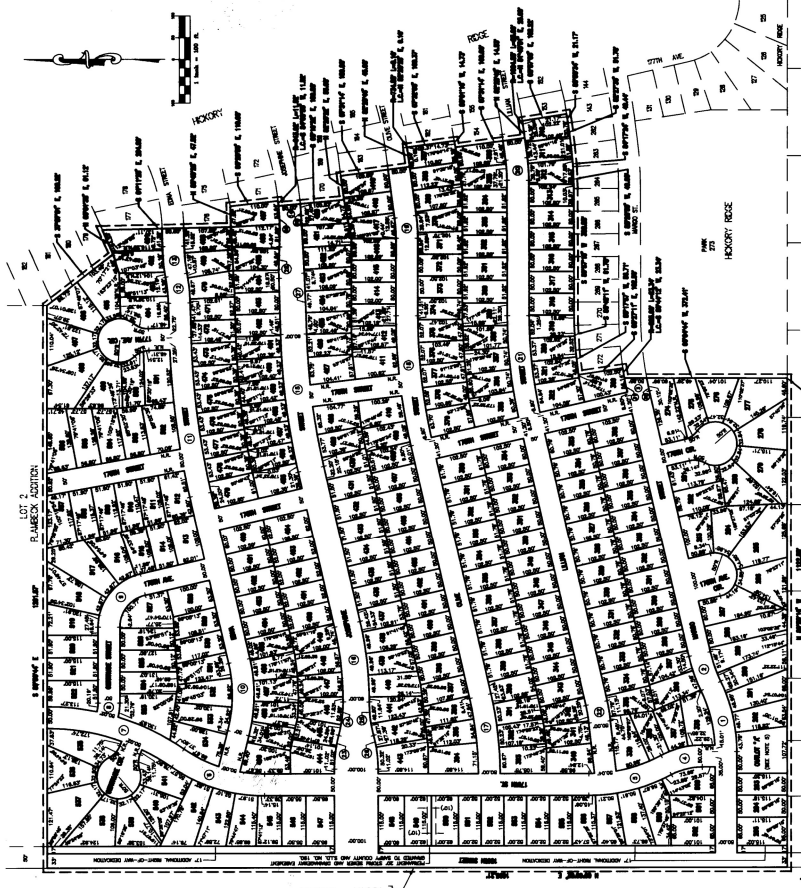
LOTS 274 THRU 566 INCLUSIVE & OUTLOT "A"  
SAPPY COUNTY, NEBRASKA

THE STATE OF NEBRASKA, County of Sappy, ss. I, Robert Clark, County Clerk, do hereby certify that the foregoing plat of Hickory Ridge, containing Lots 274 through 566 inclusive and Outlot "A", was duly recorded in my office on the 11th day of October, 2000, at 4:07 PM, and that the same is a true and correct copy of the original as filed for record.



Robert Clark  
12-29-99

CONVEYANCE OF NEBRASKA  
COUNTY OF SAPPY  
STATE OF NEBRASKA  
The plat of Hickory Ridge (see reference) was approved by the County Board of Commissioners on the 11th day of October, 2000, at 4:07 PM, and that the same is a true and correct copy of the original as filed for record.



LITE INDUSTRIAL UNITED CONDO PARK

Table with 4 columns: LOT, AREA, PERCENTAGE, and COMMENTS. Lists lots 274 through 566 and Outlot A.

Table with 4 columns: LOT, AREA, PERCENTAGE, and COMMENTS. Lists lots 274 through 566 and Outlot A.



SEAL  
SAPPY COUNTY, NEBRASKA  
COUNTY CLERK



SEAL  
SAPPY COUNTY, NEBRASKA  
COUNTY CLERK



SEAL  
SAPPY COUNTY, NEBRASKA  
COUNTY CLERK