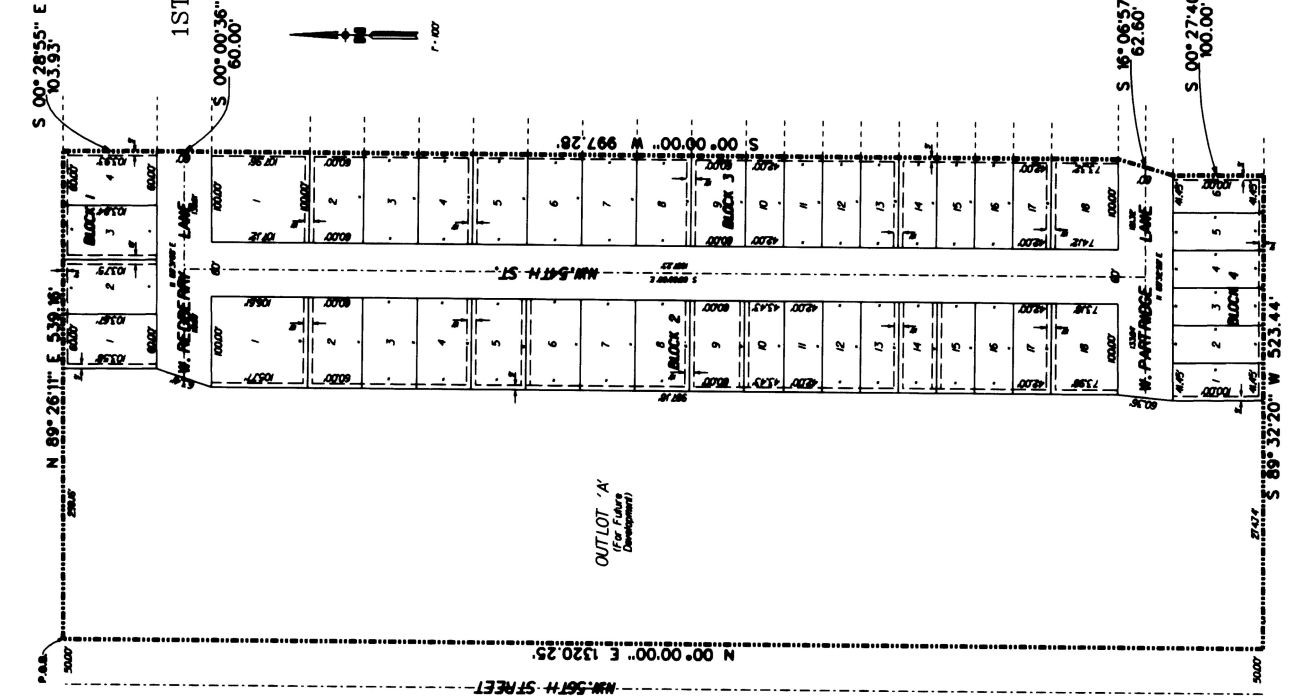


44 ee
 INST No 2003
 0 2 8 1 5 0
 #3817
 2003 MAR 28 P 12:05
 LANCASTER COUNTY, NE

HARTLAND'S CARDINAL HEIGHTS 2ND ADDITION

BASED ON CARDINAL HEIGHTS
 1ST ADDITION PRELIMINARY PLAT *01017



DEED CATION

The foregoing plat known as "HARTLAND'S CARDINAL HEIGHTS 2ND ADDITION" and described in the Surveyor's Certificate is made with the full and complete consent of the owners and is hereby granted in perpetuity to the City of Lincoln, Nebraska, a municipal corporation, Electric System, their successors and assigns, for the purpose of construction, reconstruction, replacement, repair, maintenance, alteration, improvement, extension, relocation, gas, telephone and cable television, wastewater collection, storm drainage, water main and all appurtenances thereto, over, upon or under any assembly shown thereon which shall be prohibited, no easement for the construction of any building or structure, including any utility easement, shall be granted to any person or persons or their successors or assigns, over, upon or under any assembly shown thereon, and any easement shown thereon and the assembly shown hereon are hereby granted in perpetuity to the City of Lincoln, Nebraska.

THE STREETS SHOWN THEREON ARE HEREBY DEDICATED TO THE PUBLIC.

WITNESS MY HAND THIS 19th day of February, 2008.

Duane Hartland, President
 Hartland Homes, Inc.

STATE OF NEBRASKA
 COUNTY OF LANCASTER

The foregoing instrument was acknowledged before me this 19th day of February, 2008, by Duane Hartland, President of Hartland Homes, Inc., a Nebraska Corporation on behalf of the Corporation.

Suzanne O. Knigge
 Notary Public

PLANNING COMMISSION APPROVAL

The Lincoln City- Lancaster County Planning Commission has approved this plat and has accepted the offer of dedication on this 19th day of February, 2008, by Resolution # PC-00794

ATTEST: _____
 Chief

LOT AREAS

LOT NO.	BLOCK 1	BLOCK 2	BLOCK 3	BLOCK 4
1	641.8	1061.9	1075.3	4145
2	625.3	6000	6000	4145
3	625.3	6000	6000	4145
4	625.3	6000	6000	4145
5	625.3	6000	6000	4145
6	625.3	6000	6000	4145
7	625.3	6000	6000	4145
8	625.3	6000	6000	4145
9	625.3	6000	6000	4145
10	625.3	6000	6000	4145
11	625.3	6000	6000	4145
12	625.3	6000	6000	4145
13	625.3	6000	6000	4145
14	625.3	6000	6000	4145
15	625.3	6000	6000	4145
16	625.3	6000	6000	4145
17	625.3	6000	6000	4145
18	625.3	6000	6000	4145

SURVEYOR'S CERTIFICATE

I hereby certify that I have accurately surveyed and staked out the foregoing plat of "HARTLAND'S CARDINAL HEIGHTS 2ND ADDITION" located in the County of Lancaster, Nebraska, on this 19th day of February, 2008. The boundaries of the plat are as follows:

extending (Thence) N 89° 26' 55" E 530.18 feet,
 Thence S 00° 00' 00" E 103.93 feet,
 Thence S 00° 00' 00" W 60.00 feet,
 Thence S 16° 06' 57" W 62.40 feet,
 Thence S 00° 27' 40" E 100.00 feet,
 Thence N 00° 00' 00" E 1320.25 feet to the point of beginning containing 16.32 acres, more or less.

Boundaries monuments have been placed at all lot corners on the centerline of lot lines, including abutting streets and on the subdivision and at points of tangency and curvature. The subdivision and monuments will be a surety to ensure the accuracy of the monuments at each lot and block corner and at all other points of interest. The monuments will be completed prior to the platting of permanent monuments will be completed prior to the platting of permanent monuments any lot shown on this plat are in feet or in decimals of a foot.

Signed this 19th day of February, 2008.



_____ 2008.
 Lynn J. Loth, L.S. 314
 1402 Westwood Suite A
 Lincoln, NE 68502
 (402) 421-2500