

TAYLOR
22A1 + 22B
22A2

EASEMENTS ONLY

PART OF THE SW⁴ SEC 26-14-12
NOW GREEN ACRES LOTS (85-169) LOTS 1-180

Lot #	Description	Notes
42-178	AFF	NOT APPLICABLE TO 22A15
44-306	"	"
44-325	"	"
4-287	"	"
5-78	"	"
5-79	"	"
5-80	"	"
5-80	"	"
5-406	"	"
7-367	OIL & GAS LEASE	TL N ¹ , 12A, 23+25
7-369	"	TL 22 AT LEAST P7 UP 22 15 US
7-372	"	14, 21, 16A2, 13, 12F
9-381	REQUEST	
9-638	AFFID	
10-225	AGMT	
12-483	AFF	
12-650	EASE	22A1, 22A2 + 22B
12-651	"	TL 26 SAME WIDTH AS 26A1
12-661	"	20A2 & 20A3
13-198	AFFID	TL 13
14-437	AGMT	P7 21
18-27	AGMT	23 B
19-360	CONTRACT	
20-121	ASGT	13B
20-133	REG/APPROVIS	16A1B
20-506	EASE	TL 17
20-508	"	TL 16A1
20-510	"	TL M
20-512	"	TL 20A4
20-517	"	TL 20A1 & 20A2
20-516	"	TL 16B1B
20-518	"	TL 20A3
20-520	"	TL 19 & 20B
20-524	"	TL 20A2 + 20A3

SEE AFFID AT 30-416

SEE AFFID 38-540

- ~~20-522~~ BASE TL 18
- SEE AFFID AT ~~22-450~~ AFFID TL 16 B1
- 38-590 * ~~25-326~~ AGMT
- ~~28-74~~ AFF TL 16 B1 B1
- ~~28-193~~ AGMT TL 13 B
- 4-20 PLAT GREEN AC
- ~~30-21~~ BASE FROM CO. TO CO. TO SEPARATE
SEWER LN ACROSS CO. ROAD
- 4-29 PLAT GREEN AC
- * 30-410 AFF
- ~~31-21~~ REG/APPR MANY TL'S BUT NOT US
- ~~31-34~~ CONDEMNATION "
- ~~31-180~~ REG/APPR "
- 4-48 PLAT GREEN AC
- 4-76 PLAT "
- ~~34-40~~ ORDER TL 20 A 3 B
- ~~34-43~~ " TL 20 A 3 A & 20 A 2 B
- ~~36-215~~ AFFID OF MARKETABLE TITLE
- ~~36-312~~ DMOO BASE TL 19
- * 38-590 AFFID
- ~~43-282~~ DMOO BASE IN NW⁴ SW⁴
- ~~44-341~~ BASE 26 B
- ~~45-267~~ BASE TL 11 (NW⁴ SW⁴)
- ~~47-209~~ " P7 NE⁴ SW⁴
- ~~49-500~~ " TL 17 B
- ~~56-137~~ AFFID TL 26
- 56-147 " TL 26 A1

6/7/84 LA

520.08
 290.00
 810.08

SW⁴ 26-14-12

ESTATE OF ALMA SAUTER NOTHING

Alma
 B2

087

(Book 4 is date of death 47, 38 + 50)

26-14-12

N¹ (N IS ALL THAT PT SE⁴ NW⁴ 26-14-12 LYING S OF UP ROW
 & EAST TO CUFFMAN'S ADD TO
 PAVILLION
 (N) IS ALL OF ABOVE S OF MAIN ROW
 12 A (12 IS IN NE⁴ SW⁴)
 23 W 98 ACRES SE⁴ 26-14-12
 25 ALL THAT PT NE⁴ LYING S OF UP ROW

22

66'
 7.88
 5.05
 12.93

54
 7.88
 66
 4728
 4728
 520.08

12.93

24 23
13.735

66

66

853.38

82410

82410

906,510

853.38

906.51

1759.89

5 4
19.088

66

11 528

114528

1259.88

243
3.475

66

20850

20852

229.350

12.93

13.735

26.665

343
11.575

66

3.

69450

69450

763.950

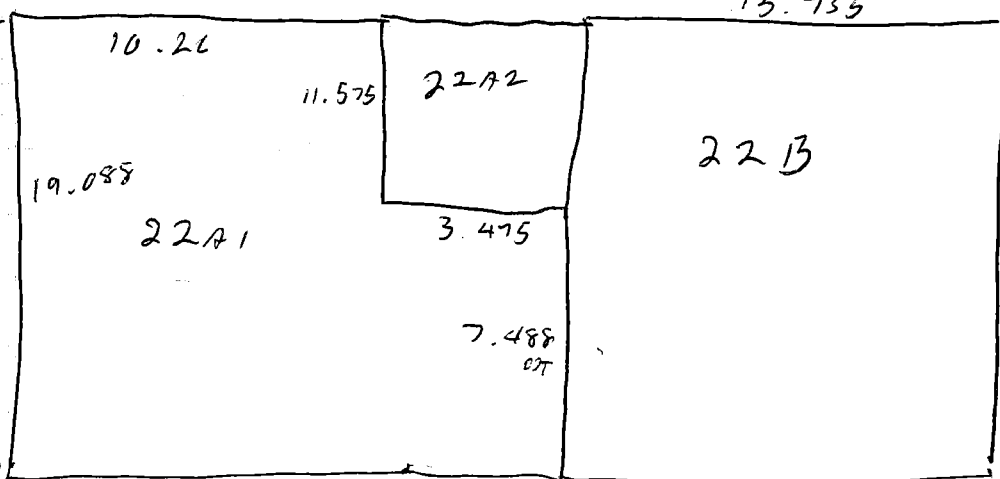
2 548
7.488

66

44028

494.308

1259.89



13.735

13.735

19.21

1N SEC 26-14-12

TL 22A1 COMM 12.93 CH E OF THE SW COR 26-14-12
 & RUNNING TAC E 13.735 CHS
 TAC N 7.488 CHS, MON ON LSS, TO A
 POINT 12.515 CHS S OF THE SUB QUARTER LN
 TAC W 3.475 CHS
 TAC N 11.575 CHS MON ON LSS TO A PT 1 CH S
 OF SUB 1/4 LN
 TAC W 10.26 CHS
 TAC S 19.088 CHS TO PLC OF B&L

TL 22A2 COMM AT A PT 13.735 CHS W & 1 CH S
 OF SUB 1/4 SEC COR ON E SD SW⁴ 26-14-12
 & RUNNING TAC S 760'
 TAC W 229.4'
 TAC N 760' TO PT 1 CH S SUB 1/4 SEC LN
 TAC E 229.4' TO PLC OF B&L

TL 22B COMM AT A PT 26.665 CHS E SW COR
 26-14-12 & RUNNING TAC E 13.735 CHS
 TAC N 19.21 CHS TO A PT 1 CH S SUB 1/4
 SEC LN
 TAC W 13.735 CHS
 TAC S TO PLC OF B&L

Green Acres Add

Please leave in
T.F.L.

4-76	plat	Lts	85-169
4-94	plat	Lts	169A-184
4-48	plat	Lts	32-84
31-302	Cov's	Lts	32-84
33-465	Covs	Lts	85-170
34-80	Covs	Lts	85-169
38-509	rel	of	12-650
31-577	rel	of	12-650
35-191	EASE	Lts	123, 169, 132, 133, 142, 143
35-471	Cov	Lts	85-184

