

2003-08557

# GOLDENSTEIN'S 2ND ADDITION

## LOT 2

BEING A PLATTING OF PART OF TAX LOT 11 IN THE EAST 1/2 OF THE NORTHEAST 1/4 OF SECTION 21, TOWNSHIP 14 NORTH, RANGE 11 EAST OF THE 6TH P.M., SARPY COUNTY, NEBRASKA

**E&A CONSULTING GROUP, INC.**  
ENGINEERS • PLANNERS • SURVEYORS

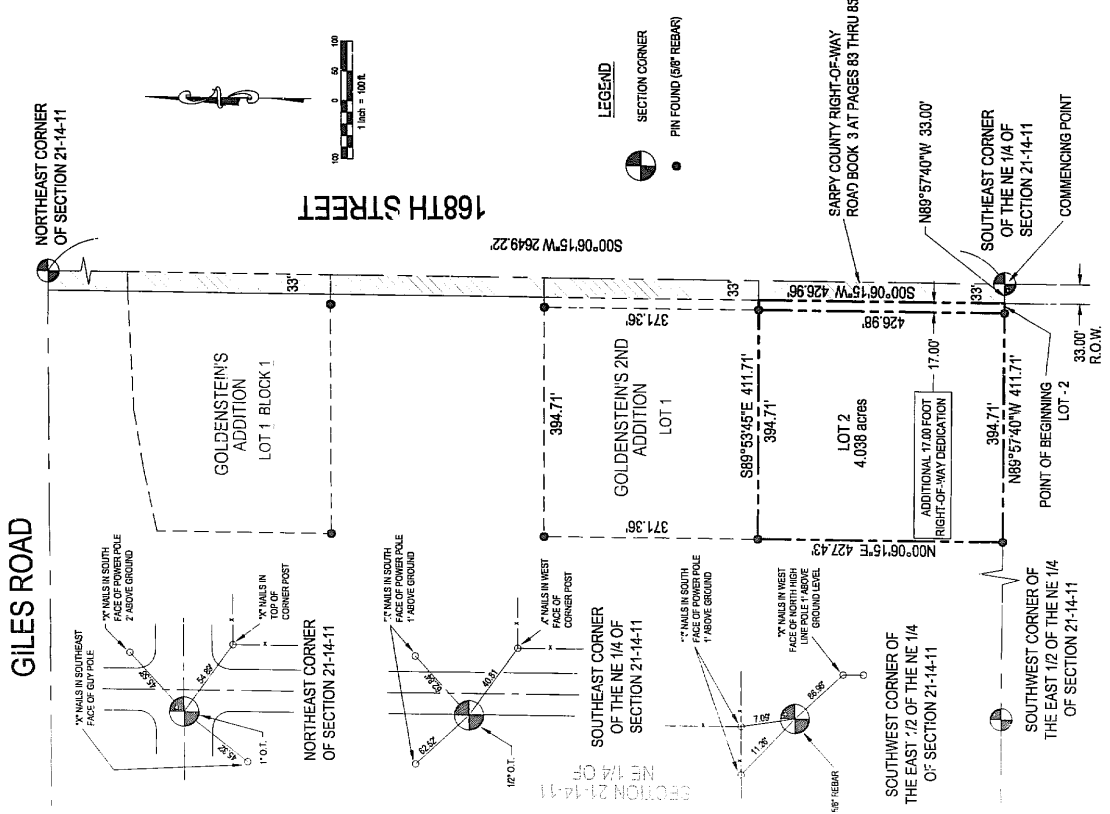
1300 O STREET  
SARPY COUNTY, NEBRASKA  
PHONE (402) 937-1111  
FAX (402) 937-1112

**GOLDENSTEIN'S 2ND ADDITION**

FINAL PLAT

DATE	08/21/2003
DESIGNED BY	ELLY
DRAWN BY	ELLY
CHECKED BY	ELLY
DATE	08/21/2003

Surveyed March 2, 2003  
2003-08557  
Original Plat Sarpy Co., NE



**DEDICATION.**  
Know all men by these presents that we, Janet M. and Bradley Goldenstein, do hereby certify that we have surveyed the property shown on this plat and that all dimensions have been computed for all lots and streets in Goldenstein's 2nd Addition (the "Addition") and that the plat is a true and correct representation of the actual survey made by us in Sarpy County, Nebraska, more particularly described as follows:  
COMMENCING AT THE SOUTHWEST CORNER OF SAID NE 1/4 OF SECTION 21, SAID POINT ALSO BEING THE SOUTHWEST CORNER OF SAID TAX LOT 11; THENCE NORTH 89°57'40\"/>

**ACKNOWLEDGEMENT OF NOTARY**  
STATE OF NEBRASKA )  
COUNTY OF DOUGLAS )  
On this 6 day of August 2003, before me a Notary Public, duly commissioned and qualified in and for said County, appeared Janet M. and Bradley Goldenstein, Co-owners, personally known by me to be the identical persons whose name is affixed to the Dedication on this plat and acknowledged the same to be their voluntary act and deed.  
Witness my hand and Notarial Seal the day and year last above written.  
Notary Public  
*Carol L. Sturgeon* Seal

**COUNTY TREASURER'S CERTIFICATE**  
This is to certify that I find no regular or special taxes due or delinquent against the property described in the Surveyor's Certificate and embraced in this plat as shown by the records of this office.  
*Robert Thomas* County Treasurer  
Date: 8-5-2003  
TAKES ASSESSED AND LEVIED FOR THE CURRENT YEAR ARE NEITHER DUE NOR PAID. TREASURER'S CERTIFICATION IS ONLY VALID UNTIL DECEMBER 30TH OF THIS YEAR.

**SARPY COUNTY BUILDING INSPECTOR APPROVAL**  
This plat of Lots 2 and 3 of Goldenstein's 2nd Addition was approved on this 5th day of August 2003.  
*Robert Thomas* Building Inspector  
Sarpy County Building Inspector

**REVIEW OF SARPY COUNTY SUBORDINATE**  
This plat of Lots 2 and 3 of Goldenstein's 2nd Addition was reviewed by the Sarpy County Surveyor on this 5th day of August 2003.  
*Robert Thomas* Sarpy County Surveyor

**SARPY COUNTY PLANNING COMMISSION APPROVAL**  
This final plat of Lots 2 and 3 of Goldenstein's 2nd Addition was approved by the County Planning Commission on this 5th day of August 2003.  
*Charles E. Meyer* Chairman, Sarpy County Planning Commission

**SARPY COUNTY BOARD OF COMMISSIONERS APPROVAL**  
This final plat of Lots 2 and 3 of Goldenstein's 2nd Addition was approved by the County Board of Commissioners on this 5th day of August 2003.  
*Robert Thomas* Chairman, Sarpy County Board of Commissioners

ATTEST:  
*Robert Thomas*

BOOK #2086

FILED: SARPY COUNTY, NEBRASKA, AUGUST 21, 2003