

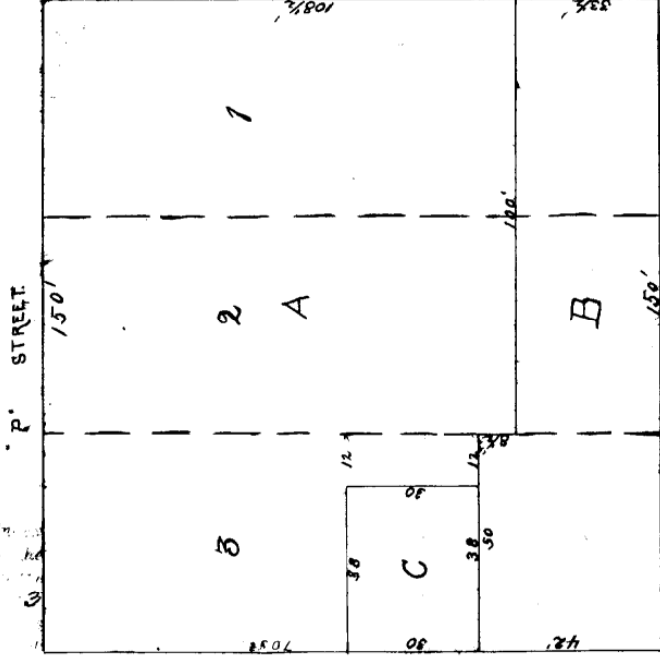
NUMERICAL INDEX, LANCASTER COUNTY

BOOK NO. 42 CITY OF LINCOLN

SUBDIVISION

LOTS 1, 2 & 3 BLOCK 42 LINCOLN.

Scale 1/16" = 25 feet.



BLOCK 42.

LEGEND.

The annexed Plat shows the subdivisions of Lots 1, 2, and 3 on Block 42, situated in the City of Lincoln, Lancaster County, Nebraska.

Dimensions of lots marked in red figures on the Plat.

Boundaries of subdivisions lots are shown by black lines.

Boundaries of old lots are shown by dotted lines except where they coincide with town or subdivision lots.

Red figures show corners of old lots.

Black letters A, B, C, etc. indicate the numbering of the subdivision lots.

The foregoing subdivision of Lots 1, 2, and 3 one, two, and three, in Block 42, together as appear on this Plat, is with the free consent and in accordance with the desire of the undersigned owners and proprietors. This subdivision is made in accordance with the provisions of section 104 of an act entitled "An Act to provide for the organization, government, and powers of cities and villages" as reported March 1st A.D. 1879.

In presence of:

Charles D. Imhoff
 Notary Public
 Wm. P. Spauld
 Estate of E. Ryd.

State of Nebraska } ss
 Lancaster County }

On this 15th day of July A.D. 1893 before me O. B. Bell a Notary Public, duly appointed, commissioned, and qualified, do, and residing in said county, personally appeared, Charles D. Imhoff and Mary E. Imhoff, the William of Imhoff and Estelle S. Lyttle who executed the above plat and acknowledged the same to be their voluntary act and deed.

O. B. Bell
 Notary Public.

REMARKS

BOOK PAGE