



201802646

201802646

Filed:

Carol Givena  
Carol Givens

June 08, 2018 11:23:00 AM

Register of Deeds  
DODGE COUNTY, NE

Fee \$52.00

DWG: F:\2017\0001-0000\017-0103\40-Design\Survey\SRV\Final Plots\Drawings\017-0103\_023AODFP.dwg USER: cbroeker  
DATE: May 24, 2018 10:55am XREFS: 70103\_pbase

DEDICATION

KNOW ALL MEN BY THESE PRESENTS, THAT GALLERY 23 EAST, LLC, A NEBRASKA LIMITED LIABILITY COMPANY, BEING THE OWNER AND PROPRIETOR OF THE PROPERTY DESCRIBED WITHIN THE LEGAL DESCRIPTION AND EMBODIED WITHIN THIS PLAT, HAS CAUSED SAID LAND TO BE PLATTED INTO EIGHTY-FOUR (84) LOTS AND SEVEN (7) OUTLOTS, TO BE NAMED AND NUMBERED AS SHOWN, SAID PLAT TO BE HEREINAFTER KNOWN AS "GALLERY 23 EAST ADDITION". SAID OWNER HEREBY RATIFIES AND APPROVES OF THE DISPOSITION OF THEIR PROPERTY, AS SHOWN ON THIS PLAT. SAID OWNER GRANTS UTILITY EASEMENTS AT THE LOCATIONS AND WIDTHS SHOWN ON THIS PLAT. WE HEREBY DEDICATE TO THE PUBLIC FOR PERPETUAL PUBLIC USE THE STREETS TO BE KNOWN AS GALLERY DRIVE, EAST 21ST AVENUE, ELIZABETH COURT, JARED COURT, WILLIAM COURT, EAST 18TH AVENUE, EAST 17TH AVENUE, COUNTY ROAD "U" BOULEVARD, BRANDON LANE, ARSON WAY, CHRISTINE DRIVE, AND TAYLOR AVENUE AT THE LOCATIONS SHOWN AND TO THE WIDTHS SHOWN HEREON. WE DO ALSO GRANT EASEMENTS TO THE CITY OF FREMONT. SAID EASEMENTS ARE RESERVED FOR THE USE OF PUBLIC UTILITIES, AND ARE SUBJECT TO THE PARASITIC RIGHT OF THE PUBLIC UTILITY TO INSTALL, REPAIR, REPLACE AND MAINTAIN ITS INSTALLATIONS.

BY: GALLERY 23 EAST, LLC, A NEBRASKA LIMITED LIABILITY COMPANY

By: *Michael Cosentino* by: *William Cosentino*  
NAME: MICHAEL COSENTINO NAME: WILLIAM COSENTINO  
TITLE: MANAGER TITLE: MANAGER

ACKNOWLEDGMENT OF NOTARY

STATE OF NEBRASKA )  
) SS  
DODGE COUNTY )

ON THIS 24<sup>th</sup> DAY OF May 2018 THE UNDERSIGNED, A NOTARY PUBLIC, PERSONALLY CAME MICHAEL COSENTINO, MANAGER, FOR GALLERY 23 EAST, LLC, A NEBRASKA LIMITED LIABILITY COMPANY.

*Daniel D. Ciarro*  
NOTARY PUBLIC

ACKNOWLEDGMENT OF NOTARY

STATE OF NEBRASKA )  
) SS  
DODGE COUNTY )

ON THIS 24<sup>th</sup> DAY OF May 2018 THE UNDERSIGNED, A NOTARY PUBLIC, PERSONALLY CAME WILLIAM COSENTINO, MANAGER, FOR GALLERY 23 EAST, LLC, A NEBRASKA LIMITED LIABILITY COMPANY.

*Daniel D. Ciarro*  
NOTARY PUBLIC

CITY OF FREMONT PLANNING COMMISSION APPROVAL

THIS PLAT OF "GALLERY 23 EAST ADDITION" HAS BEEN SUBMITTED TO AND APPROVED BY THE CITY OF FREMONT PLANNING COMMISSION AND IS HEREBY TRANSMITTED TO THE CITY COUNCIL OF FREMONT, NEBRASKA, WITH THE RECOMMENDATION THAT THIS PLAT BE APPROVED AS PROPOSED.

DATED THIS 17<sup>th</sup> DAY OF March 2018

CITY OF FREMONT PLANNING COMMISSION:

*Robert E. Dehn*  
CHAIRPERSON

*James R. Davis*  
SECRETARY

FREMONT CITY COUNCIL APPROVAL

THE PLAT AND THE DEDICATION SHOWN ON THIS PLAT ARE HEREBY ACCEPTED BY THE FREMONT CITY COUNCIL, DODGE COUNTY, NEBRASKA.

THIS 27<sup>th</sup> DAY OF March 2018

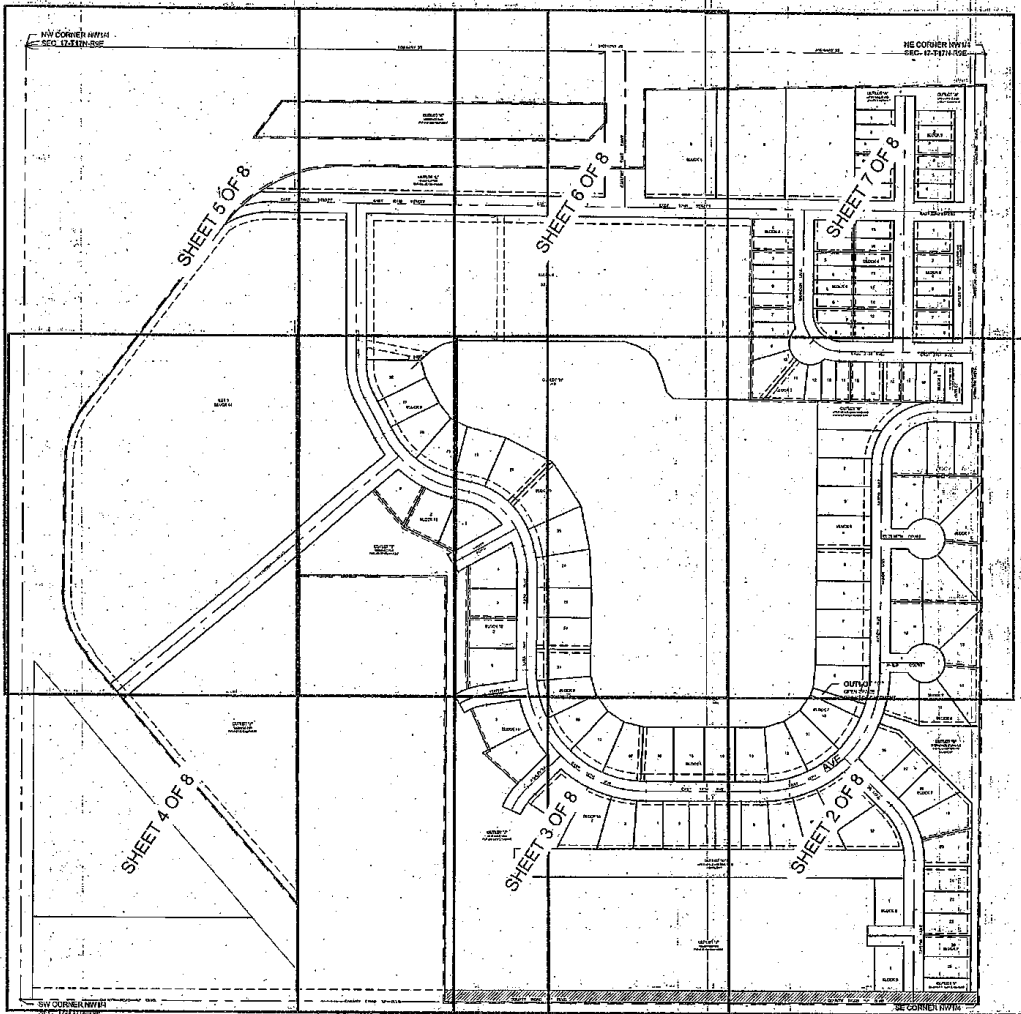
*Scott G. Johnson*  
MAYOR

*Tim Hill*  
CITY CLERK



INDEX OF SHEETS

- SHEET 1: VICINITY MAP, DEDICATION, ACKNOWLEDGMENT OF NOTARY, CITY OF FREMONT PLANNING COMMISSION APPROVAL, FREMONT CITY COUNCIL APPROVAL.
- SHEET 2: CURVE DATA TABLE, FINAL PLAT DRAWING.
- SHEET 3: FINAL PLAT DRAWING.
- SHEET 4: FINAL PLAT DRAWING.
- SHEET 5: FINAL PLAT DRAWING.
- SHEET 6: FINAL PLAT DRAWING.
- SHEET 7: FINAL PLAT DRAWING.
- SHEET 8: LEGAL DESCRIPTION, SURVEYOR'S CERTIFICATE, LOT AREA TABLE, MINIMUM OPENING ELEVATION TABLE.



NOT TO SCALE

VICINITY MAP SCALE: 1" = 100'

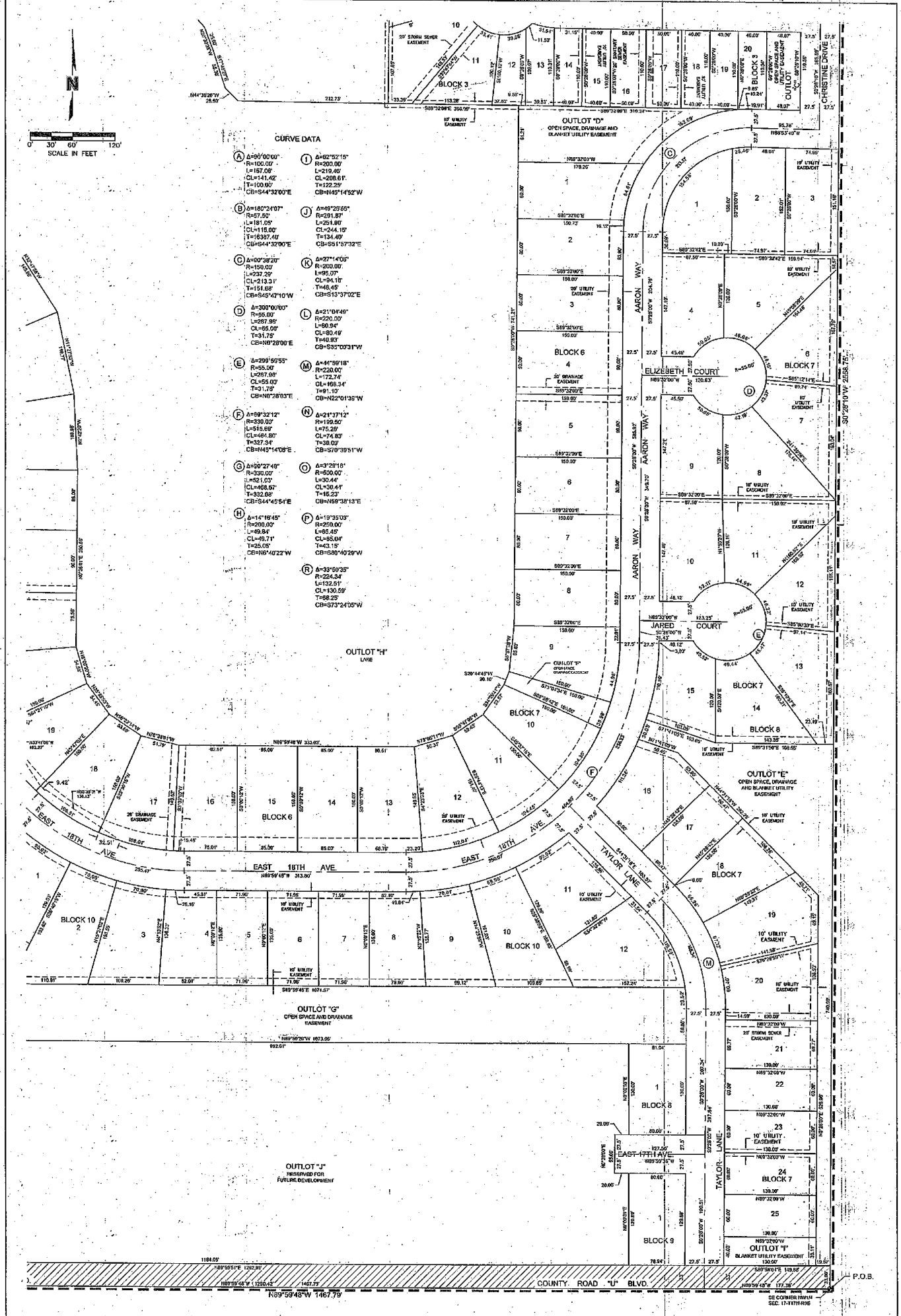
1 OF 8 SHEETS

FINAL PLAT  
GALLERY 23 EAST ADDITION  
FREMONT, NEBRASKA

REV. NO.	DATE	REVISION DESCRIPTION

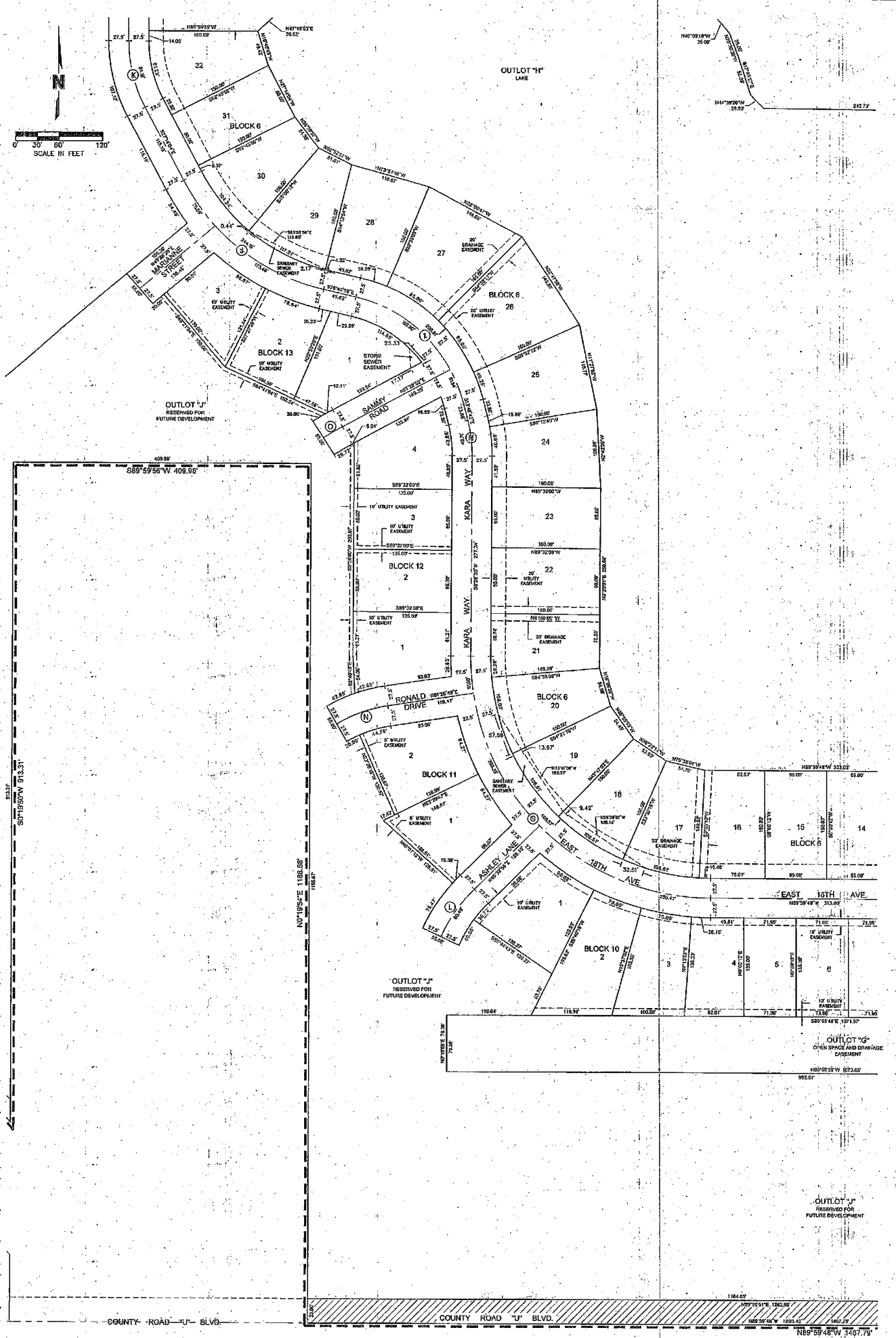


011 P Street, Suite 200  
P.O. Box 64988  
Lincoln, NE 68568  
TEL: 402.474.6311  
FAX: 402.474.6188  
www.molssonassociates.com



**CURVE DATA**

A=90°00'00" R=100.00' L=157.08' CL=141.42' T=100.00' CB=S44°32'00"E	I=40°22'15" R=100.00' L=219.46' CL=208.61' T=100.00' CB=N45°14'52"W
B=160°21'07" R=151.05' L=181.05' CL=118.00' T=163.87'± CB=S44°32'00"E	J=49°22'45" R=200.00' L=251.80' CL=244.18' T=154.00' CB=S61°57'32"E
C=150°28'20" R=150.00' L=237.29' CL=213.31' T=151.88' CB=S45°47'10"W	K=37°14'05" R=200.00' L=95.07' CL=94.18' T=84.45' CB=S13°37'02"E
D=300°00'00" R=55.00' L=297.99' CL=55.00' T=91.79' CB=N10°28'00"E	L=31°04'45" R=20.00' L=80.94' CL=80.49' T=91.10' CB=S85°00'31"W
E=299°59'55" R=55.00' L=297.99' CL=55.00' T=91.79' CB=N10°28'00"E	M=44°59'18" R=20.00' L=72.74' CL=74.83' T=38.09' CB=S70°39'51"W
F=99°32'12" R=330.00' L=514.69' CL=464.80' T=327.34' CB=N45°14'08"E	N=21°37'12" R=159.50' L=175.29' CL=74.83' T=38.09' CB=S70°39'51"W
G=50°27'49" R=330.00' L=521.03' CL=463.57' T=322.68' CB=S44°45'54"E	O=72°19'10" R=650.00' L=821.44' CL=50.41' T=16.23' CB=N59°38'13"E
H=14°18'45" R=200.00' L=48.84' CL=48.04' T=25.05' CB=N0°40'22"W	P=19°35'03" R=250.00' L=324.54' CL=48.84' T=14.15' CB=S30°40'28"W
	Q=35°59'35" R=150.00' L=192.51' CL=130.59' T=98.25' CB=S73°24'05"W



FINAL PLAT  
 GALLERY 23 EAST ADDITION  
 FRÉMONT, NEBRASKA

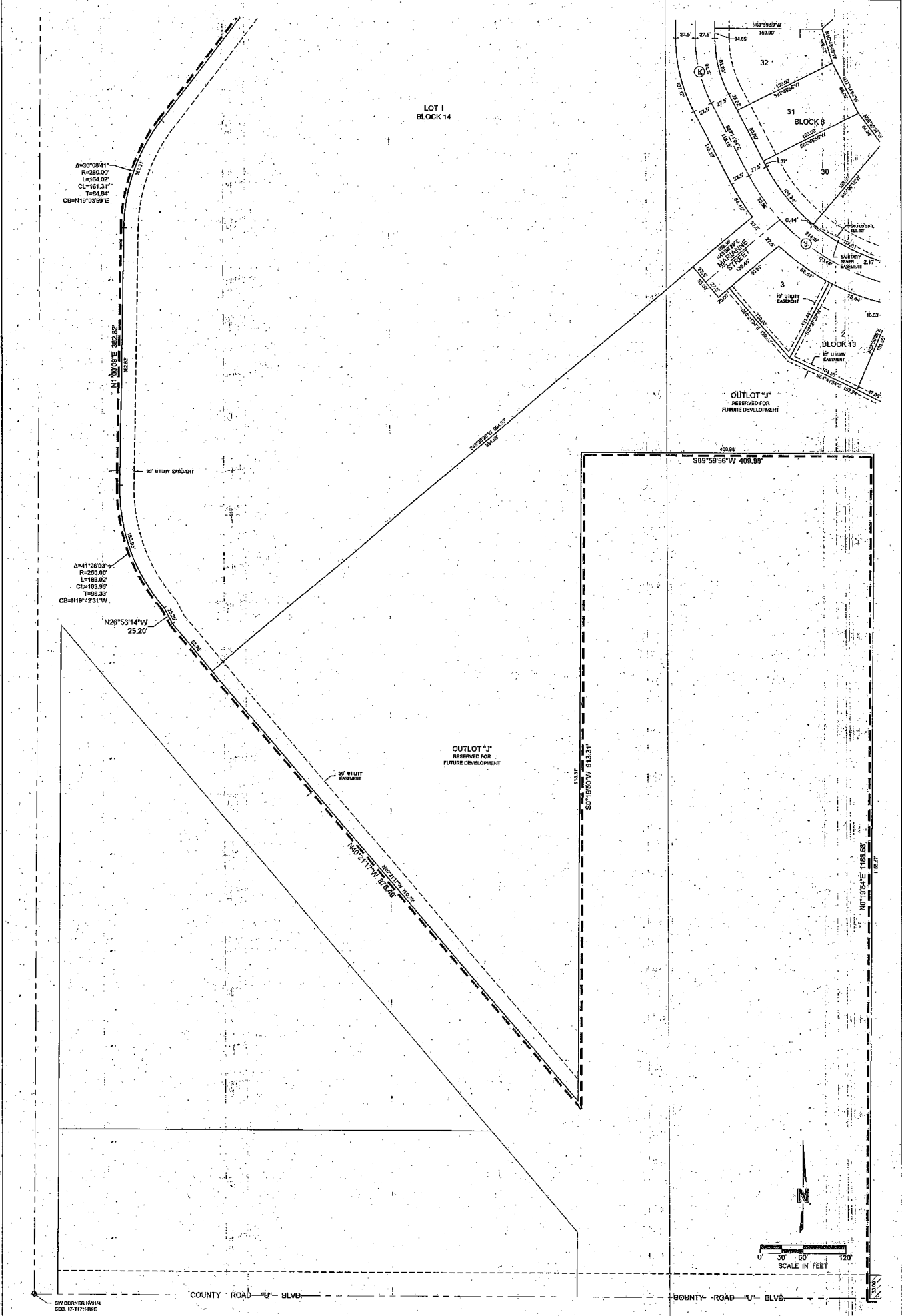
REV. NO.	DATE	REVISIONS DESCRIPTION

**MOLSSON ASSOCIATES**

501 P Street, Suite 200  
 P.O. Box 9400  
 Lincoln, NE 68508

TEL 402.474.0511  
 FAX 402.474.6160  
 www.molssonassociates.com

SHEET  
 3 OF 8

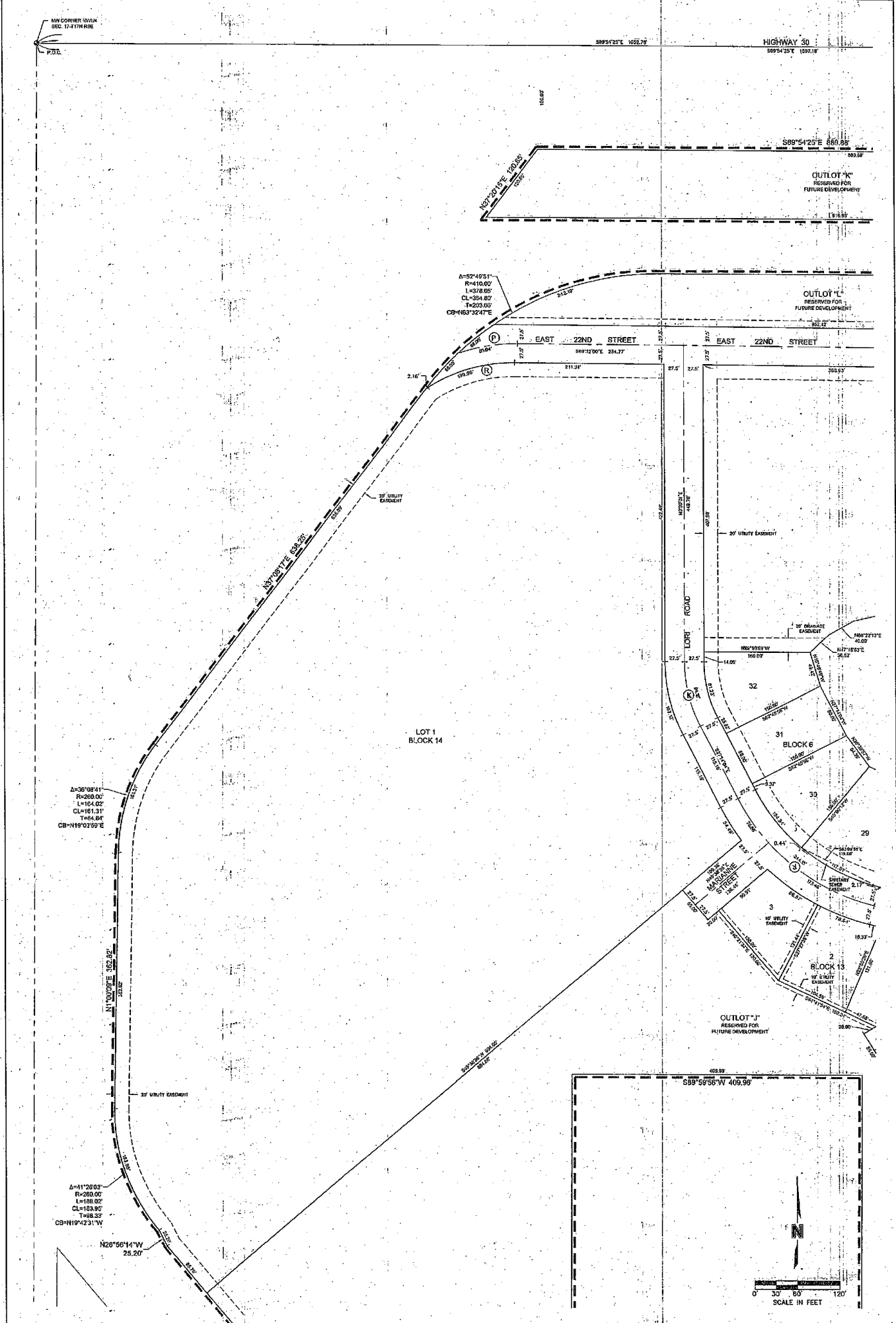


FINAL PLAT  
 GALLERY 23 EAST ADDITION  
 FREMONT, NEBRASKA

REV. NO.	DATE	REVISIONS DESCRIPTION

**MOLSSON ASSOCIATES**  
 801 P Street, Suite 200  
 P.O. Box 84008  
 Lincoln, NE 68508  
 TEL: 402.474.8311  
 FAX: 402.474.8100  
[www.molssonassociates.com](http://www.molssonassociates.com)

4  
 OF  
 8  
 SHEET



FINAL PLAT  
 GALLERY 23 EAST ADDITION  
 FREMONT, NEBRASKA

REV. NO.	DATE	REVISIONS DESCRIPTION

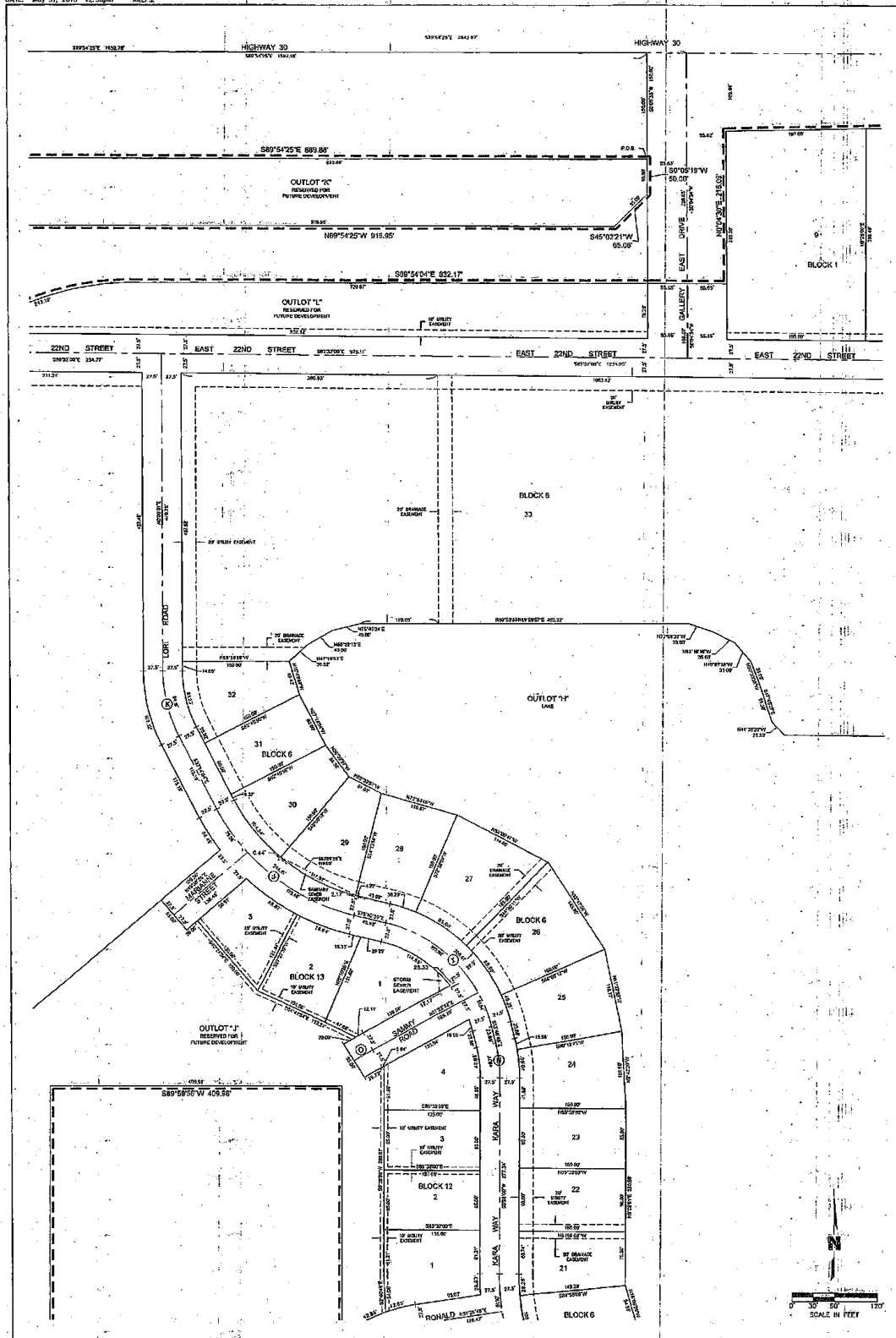
**MOLSSON ASSOCIATES**

601 P Street, Suite 200  
 P.O. Box 84608  
 Lincoln, NE 68508

TEL 402.474.6311  
 FAX 402.474.6190  
 www.molssonassociates.com

SHEET  
 5 OF 8

DWG: F:\2017\001-2591\017-0103\10-Design\Survey\Site\Final\Plat\Drawings\017-0103\_023A001.Plot USER: dbrooker  
 DATE: May 31, 2018 12:30pm XREFS:

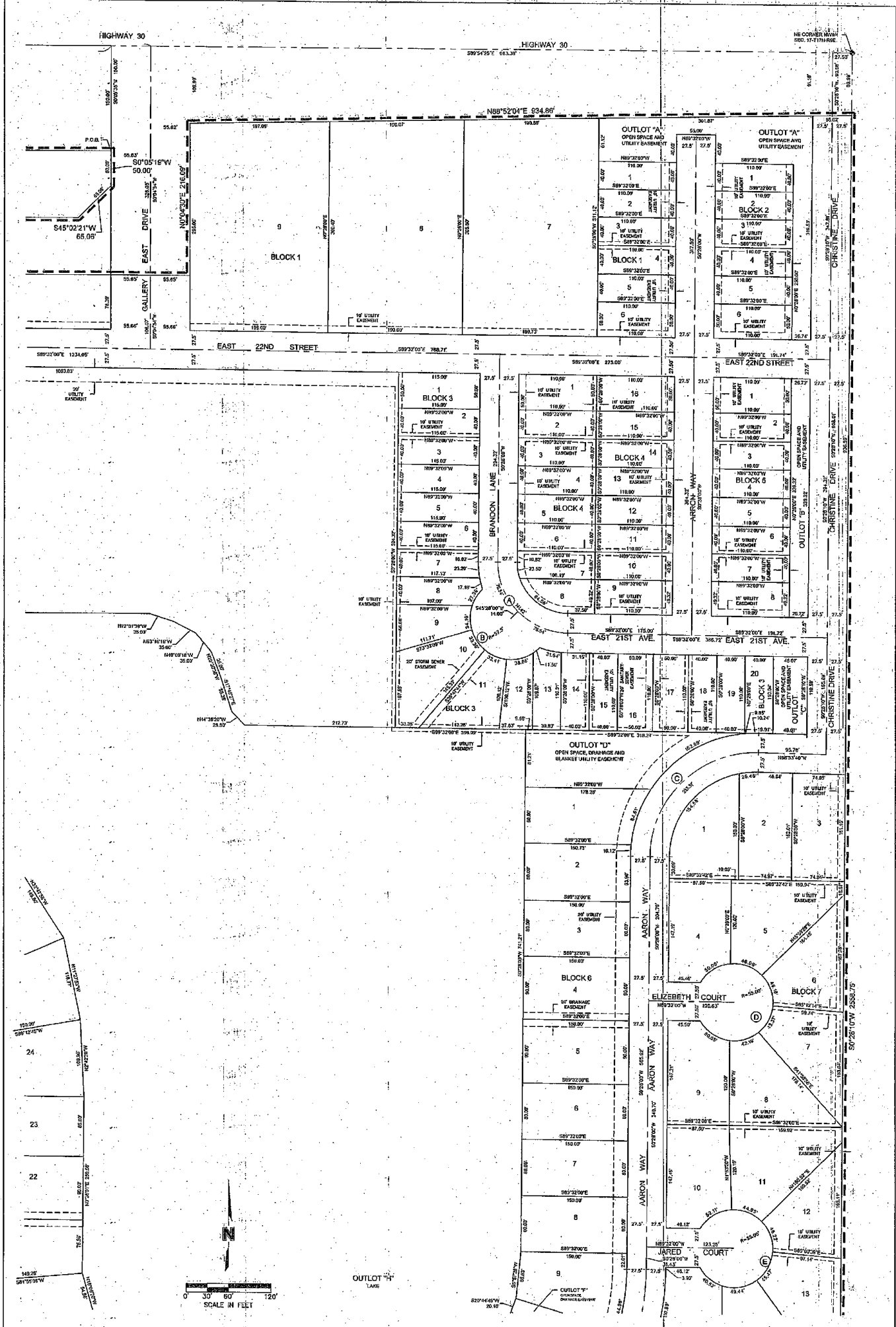


SHEET 9 OF 8	FINAL PLAT		REV. NO.	DATE	REVISIONS DESCRIPTION
	GALLERY 23 EAST ADDITION				
	FREMONT, NEBRASKA		2018	REVISIONS	

**MOLSSON**  
ASSOCIATES

501 P Street, Suite 200  
P.O. Box 86668  
Lincoln, NE 68509

TEL: 402.474.0111  
FAX: 402.474.5188  
www.molssonassociates.com



FINAL PLAT  
 GALLERY 23 EAST ADDITION  
 FREMONT, NEBRASKA

REV. NO.	DATE	REVISIONS DESCRIPTION

**OLSSON ASSOCIATES**

601 P Street, Suite 200  
 P.O. Box 9400  
 Lincoln, NE 68508

TEL 402.474.6311  
 FAX 402.474.6160  
 www.olssonassociates.com

SHEET  
 7 of 8

**LEGAL DESCRIPTION**

A TRACT OF LAND COMPOSED OF A PORTION OF THE NORTHWEST QUARTER OF SECTION 17, TOWNSHIP 17 NORTH, RANGE 9 EAST OF THE 6TH P.M., DODGE COUNTY, NEBRASKA, AND MORE PARTICULARLY DESCRIBED AS FOLLOWS:

BEGINNING AT THE SOUTHWEST CORNER OF THE NORTHWEST QUARTER OF SECTION 17, TOWNSHIP 17 NORTH, RANGE 9 EAST OF THE 6TH P.M., THENCE WESTERLY ON THE SOUTH LINE OF SAID NORTHWEST QUARTER ON AN ASSUMED BEARING OF N89°59'48"W, A DISTANCE OF 1487.70 TO A POINT; THENCE N0°01'56"E, A DISTANCE OF 1158.69 TO A POINT; THENCE S89°55'56"W, A DISTANCE OF 469.59 TO A POINT; THENCE S00°10'50"W, A DISTANCE OF 913.31 TO A POINT; THENCE N40°21'17"W, A DISTANCE OF 878.49 TO A POINT; THENCE N83°18'14"W, A DISTANCE OF 25.28 TO A POINT OF CURVATURE FOR A NON-TANGENT CURVE IN A CLOCKWISE DIRECTION HAVING A CENTRAL ANGLE OF 41°26'03", A RADIUS OF 260.05, AN ARC LENGTH OF 183.82, A CHORD LENGTH OF 183.85, A TANGENT LENGTH OF 88.25; AND A CHORD BEARING OF N12°42'14"W TO A POINT; THENCE N61°00'09"E, A DISTANCE OF 362.82 TO A POINT OF CURVATURE FOR A NON-TANGENT CURVE IN A CLOCKWISE DIRECTION HAVING A CENTRAL ANGLE OF 38°08'41", A RADIUS OF 200.00, AN ARC LENGTH OF 164.02, A CHORD LENGTH OF 161.31, A TANGENT LENGTH OF 84.84, AND A CHORD BEARING OF N15°02'59"E TO A POINT; THENCE N87°18'17"E, A DISTANCE OF 638.29 TO A POINT OF CURVATURE FOR A NON-TANGENT CURVE IN A CLOCKWISE DIRECTION HAVING A CENTRAL ANGLE OF 52°45'51", A RADIUS OF 410.00, AN ARC LENGTH OF 318.02, A CHORD LENGTH OF 364.90, A TANGENT LENGTH OF 200.88, AND A CHORD BEARING OF N63°32'57"E TO A POINT; THENCE S89°54'04"E, A DISTANCE OF 832.17 TO A POINT; THENCE N00°04'30"E, A DISTANCE OF 210.09 TO A POINT; THENCE N81°52'45"E, A DISTANCE OF 334.89 TO A POINT OF INTERSECTION WITH THE EAST LINE OF THE NORTHWEST QUARTER OF SECTION 17, TOWNSHIP 17 NORTH, RANGE 9 EAST OF THE 6TH P.M.; THENCE S00°28'20"W, ON THE EAST LINE OF SAID NORTHWEST QUARTER, A DISTANCE OF 6.95 TO THE POINT OF BEGINNING, SAID TRACT CONTAINS A CALCULATED AREA OF 4,955.17 SQUARE FEET OR 113.78 ACRES, MORE OR LESS.

TOGETHER WITH:

A TRACT OF LAND COMPOSED OF A PORTION OF THE NORTHWEST QUARTER OF SECTION 17, TOWNSHIP 17 NORTH, RANGE 9 EAST OF THE 6TH P.M., DODGE COUNTY, NEBRASKA, MORE PARTICULARLY DESCRIBED AS FOLLOWS:

COMMENCING AT THE NORTHWEST CORNER OF THE NORTHWEST QUARTER OF SECTION 17, TOWNSHIP 17 NORTH, RANGE 9 EAST OF THE 6TH P.M., THENCE EASTERLY ON THE NORTH LINE OF SAID NORTHWEST QUARTER ON AN ASSUMED BEARING OF S89°42'25"E, A DISTANCE OF 1,537.18 TO A POINT; THENCE S00°03'50"W, A DISTANCE OF 150.00; THENCE S45°12'21"W, A DISTANCE OF 65.99 TO A POINT; THENCE N89°54'28"W, ON A LINE THAT IS 248.05 SOUTH OF AND PARALLEL WITH THE NORTH LINE OF SAID NORTHWEST QUARTER, A DISTANCE OF 916.96 TO A POINT; THENCE N37°20'15"E, A DISTANCE OF 120.85 TO A POINT; THENCE S81°02'25"E, ON A LINE THAT IS 190.89 SOUTH OF AND PARALLEL WITH THE NORTH LINE OF SAID NORTHWEST QUARTER, A DISTANCE OF 889.89; TO THE POINT OF BEGINNING, SAID TRACT CONTAINS A CALCULATED AREA OF 87,820.12 SQUARE FEET OR 2.02 ACRES, MORE OR LESS.

**SURVEYOR'S CERTIFICATE**

I, MICHAEL R. JOHNSON, A REGISTERED LAND SURVEYOR, DO HEREBY CERTIFY THAT "GALLERY 23 EAST ADDITION" HAS BEEN SURVEYED BY ME OR UNDER MY SUPERVISION AND THAT THE LEGAL DESCRIPTION OF "GALLERY 23 EAST ADDITION" IS AS STATED ON THIS PLAT. PERMANENT MONUMENTS HAVE BEEN FOUND OR ESTABLISHED AT ALL LOCATIONS SHOWN ON THIS PLAT.

DATE: May 31, 2018  
 MICHAEL R. JOHNSON  
 1111 LINCOLN HALL  
 SUITE A11  
 LINCOLN, NE 68508



LOT AREA TABLE			LOT AREA TABLE			LOT AREA TABLE		
LOT NUMBER	AREA IN SF.	AREA IN AC.	LOT NUMBER	AREA IN SF.	AREA IN AC.	LOT NUMBER	AREA IN SF.	AREA IN AC.
<b>BLOCK 1</b>			<b>BLOCK 6</b>			<b>BLOCK 8</b>		
LOT 1	4,462.09 SF.	0.10 AC.	LOT 1	12,818.81 SF.	0.30 AC.	LOT 1	16,427.93 SF.	0.37 AC.
LOT 2	4,462.09 SF.	0.10 AC.	LOT 7	12,818.82 SF.	0.30 AC.	LOT 1	16,427.93 SF.	0.37 AC.
LOT 3	4,462.09 SF.	0.10 AC.	LOT 8	12,818.82 SF.	0.30 AC.	LOT 2	16,427.93 SF.	0.37 AC.
LOT 4	4,462.09 SF.	0.10 AC.	LOT 4	12,818.82 SF.	0.30 AC.	LOT 3	16,427.93 SF.	0.37 AC.
LOT 5	4,462.09 SF.	0.10 AC.	LOT 5	12,818.82 SF.	0.30 AC.	LOT 4	16,427.93 SF.	0.37 AC.
LOT 6	4,462.09 SF.	0.10 AC.	LOT 6	12,818.82 SF.	0.30 AC.	LOT 5	16,427.93 SF.	0.37 AC.
LOT 7	4,462.09 SF.	0.10 AC.	LOT 7	12,818.82 SF.	0.30 AC.	LOT 6	16,427.93 SF.	0.37 AC.
LOT 8	4,462.09 SF.	0.10 AC.	LOT 8	12,818.82 SF.	0.30 AC.	LOT 7	16,427.93 SF.	0.37 AC.
LOT 9	4,462.09 SF.	0.10 AC.	LOT 9	12,818.82 SF.	0.30 AC.	LOT 8	16,427.93 SF.	0.37 AC.
<b>BLOCK 2</b>			LOT 10	12,818.82 SF.	0.30 AC.	LOT 9	16,427.93 SF.	0.37 AC.
LOT 1	4,462.09 SF.	0.10 AC.	LOT 11	12,818.82 SF.	0.30 AC.	LOT 10	16,427.93 SF.	0.37 AC.
LOT 2	4,462.09 SF.	0.10 AC.	LOT 12	12,818.82 SF.	0.30 AC.	LOT 11	16,427.93 SF.	0.37 AC.
LOT 3	4,462.09 SF.	0.10 AC.	LOT 13	12,818.82 SF.	0.30 AC.	LOT 12	16,427.93 SF.	0.37 AC.
LOT 4	4,462.09 SF.	0.10 AC.	LOT 14	12,818.82 SF.	0.30 AC.	LOT 13	16,427.93 SF.	0.37 AC.
LOT 5	4,462.09 SF.	0.10 AC.	LOT 15	12,818.82 SF.	0.30 AC.	LOT 14	16,427.93 SF.	0.37 AC.
LOT 6	4,462.09 SF.	0.10 AC.	LOT 16	12,818.82 SF.	0.30 AC.	LOT 15	16,427.93 SF.	0.37 AC.
LOT 7	4,462.09 SF.	0.10 AC.	LOT 17	12,818.82 SF.	0.30 AC.	LOT 16	16,427.93 SF.	0.37 AC.
LOT 8	4,462.09 SF.	0.10 AC.	LOT 18	12,818.82 SF.	0.30 AC.	LOT 17	16,427.93 SF.	0.37 AC.
LOT 9	4,462.09 SF.	0.10 AC.	LOT 19	12,818.82 SF.	0.30 AC.	LOT 18	16,427.93 SF.	0.37 AC.
<b>BLOCK 3</b>			LOT 20	12,818.82 SF.	0.30 AC.	LOT 19	16,427.93 SF.	0.37 AC.
LOT 1	4,462.09 SF.	0.10 AC.	LOT 21	12,818.82 SF.	0.30 AC.	LOT 20	16,427.93 SF.	0.37 AC.
LOT 2	4,462.09 SF.	0.10 AC.	LOT 22	12,818.82 SF.	0.30 AC.	LOT 21	16,427.93 SF.	0.37 AC.
LOT 3	4,462.09 SF.	0.10 AC.	LOT 23	12,818.82 SF.	0.30 AC.	LOT 22	16,427.93 SF.	0.37 AC.
LOT 4	4,462.09 SF.	0.10 AC.	LOT 24	12,818.82 SF.	0.30 AC.	LOT 23	16,427.93 SF.	0.37 AC.
LOT 5	4,462.09 SF.	0.10 AC.	LOT 25	12,818.82 SF.	0.30 AC.	LOT 24	16,427.93 SF.	0.37 AC.
LOT 6	4,462.09 SF.	0.10 AC.	LOT 26	12,818.82 SF.	0.30 AC.	LOT 25	16,427.93 SF.	0.37 AC.
LOT 7	4,462.09 SF.	0.10 AC.	LOT 27	12,818.82 SF.	0.30 AC.	LOT 26	16,427.93 SF.	0.37 AC.
LOT 8	4,462.09 SF.	0.10 AC.	LOT 28	12,818.82 SF.	0.30 AC.	LOT 27	16,427.93 SF.	0.37 AC.
LOT 9	4,462.09 SF.	0.10 AC.	LOT 29	12,818.82 SF.	0.30 AC.	LOT 28	16,427.93 SF.	0.37 AC.
LOT 10	4,462.09 SF.	0.10 AC.	LOT 30	12,818.82 SF.	0.30 AC.	LOT 29	16,427.93 SF.	0.37 AC.
LOT 11	4,462.09 SF.	0.10 AC.	LOT 31	12,818.82 SF.	0.30 AC.	LOT 30	16,427.93 SF.	0.37 AC.
LOT 12	4,462.09 SF.	0.10 AC.	LOT 32	12,818.82 SF.	0.30 AC.	LOT 31	16,427.93 SF.	0.37 AC.
LOT 13	4,462.09 SF.	0.10 AC.	LOT 33	12,818.82 SF.	0.30 AC.	LOT 32	16,427.93 SF.	0.37 AC.
LOT 14	4,462.09 SF.	0.10 AC.	<b>BLOCK 7</b>			LOT 33	16,427.93 SF.	0.37 AC.
LOT 15	4,462.09 SF.	0.10 AC.	LOT 1	12,818.82 SF.	0.30 AC.	LOT 1	16,427.93 SF.	0.37 AC.
LOT 16	4,462.09 SF.	0.10 AC.	LOT 2	12,818.82 SF.	0.30 AC.	LOT 2	16,427.93 SF.	0.37 AC.
LOT 17	4,462.09 SF.	0.10 AC.	LOT 3	12,818.82 SF.	0.30 AC.	LOT 3	16,427.93 SF.	0.37 AC.
LOT 18	4,462.09 SF.	0.10 AC.	LOT 4	12,818.82 SF.	0.30 AC.	LOT 4	16,427.93 SF.	0.37 AC.
LOT 19	4,462.09 SF.	0.10 AC.	LOT 5	12,818.82 SF.	0.30 AC.	LOT 5	16,427.93 SF.	0.37 AC.
LOT 20	4,462.09 SF.	0.10 AC.	LOT 6	12,818.82 SF.	0.30 AC.	LOT 6	16,427.93 SF.	0.37 AC.
LOT 21	4,462.09 SF.	0.10 AC.	LOT 7	12,818.82 SF.	0.30 AC.	LOT 7	16,427.93 SF.	0.37 AC.
LOT 22	4,462.09 SF.	0.10 AC.	LOT 8	12,818.82 SF.	0.30 AC.	LOT 8	16,427.93 SF.	0.37 AC.
LOT 23	4,462.09 SF.	0.10 AC.	LOT 9	12,818.82 SF.	0.30 AC.	LOT 9	16,427.93 SF.	0.37 AC.
LOT 24	4,462.09 SF.	0.10 AC.	LOT 10	12,818.82 SF.	0.30 AC.	LOT 10	16,427.93 SF.	0.37 AC.
LOT 25	4,462.09 SF.	0.10 AC.	LOT 11	12,818.82 SF.	0.30 AC.	LOT 11	16,427.93 SF.	0.37 AC.
LOT 26	4,462.09 SF.	0.10 AC.	LOT 12	12,818.82 SF.	0.30 AC.	LOT 12	16,427.93 SF.	0.37 AC.
LOT 27	4,462.09 SF.	0.10 AC.	LOT 13	12,818.82 SF.	0.30 AC.	LOT 13	16,427.93 SF.	0.37 AC.
LOT 28	4,462.09 SF.	0.10 AC.	LOT 14	12,818.82 SF.	0.30 AC.	LOT 14	16,427.93 SF.	0.37 AC.
LOT 29	4,462.09 SF.	0.10 AC.	LOT 15	12,818.82 SF.	0.30 AC.	LOT 15	16,427.93 SF.	0.37 AC.
LOT 30	4,462.09 SF.	0.10 AC.	LOT 16	12,818.82 SF.	0.30 AC.	LOT 16	16,427.93 SF.	0.37 AC.
LOT 31	4,462.09 SF.	0.10 AC.	LOT 17	12,818.82 SF.	0.30 AC.	LOT 17	16,427.93 SF.	0.37 AC.
LOT 32	4,462.09 SF.	0.10 AC.	LOT 18	12,818.82 SF.	0.30 AC.	LOT 18	16,427.93 SF.	0.37 AC.
LOT 33	4,462.09 SF.	0.10 AC.	LOT 19	12,818.82 SF.	0.30 AC.	LOT 19	16,427.93 SF.	0.37 AC.
<b>BLOCK 4</b>			LOT 20	12,818.82 SF.	0.30 AC.	LOT 20	16,427.93 SF.	0.37 AC.
LOT 1	4,462.09 SF.	0.10 AC.	LOT 21	12,818.82 SF.	0.30 AC.	LOT 21	16,427.93 SF.	0.37 AC.
LOT 2	4,462.09 SF.	0.10 AC.	LOT 22	12,818.82 SF.	0.30 AC.	LOT 22	16,427.93 SF.	0.37 AC.
LOT 3	4,462.09 SF.	0.10 AC.	LOT 23	12,818.82 SF.	0.30 AC.	LOT 23	16,427.93 SF.	0.37 AC.
LOT 4	4,462.09 SF.	0.10 AC.	LOT 24	12,818.82 SF.	0.30 AC.	LOT 24	16,427.93 SF.	0.37 AC.
LOT 5	4,462.09 SF.	0.10 AC.	LOT 25	12,818.82 SF.	0.30 AC.	LOT 25	16,427.93 SF.	0.37 AC.
LOT 6	4,462.09 SF.	0.10 AC.	LOT 26	12,818.82 SF.	0.30 AC.	LOT 26	16,427.93 SF.	0.37 AC.
LOT 7	4,462.09 SF.	0.10 AC.	LOT 27	12,818.82 SF.	0.30 AC.	LOT 27	16,427.93 SF.	0.37 AC.
LOT 8	4,462.09 SF.	0.10 AC.	LOT 28	12,818.82 SF.	0.30 AC.	LOT 28	16,427.93 SF.	0.37 AC.
LOT 9	4,462.09 SF.	0.10 AC.	LOT 29	12,818.82 SF.	0.30 AC.	LOT 29	16,427.93 SF.	0.37 AC.
LOT 10	4,462.09 SF.	0.10 AC.	LOT 30	12,818.82 SF.	0.30 AC.	LOT 30	16,427.93 SF.	0.37 AC.
LOT 11	4,462.09 SF.	0.10 AC.	LOT 31	12,818.82 SF.	0.30 AC.	LOT 31	16,427.93 SF.	0.37 AC.
LOT 12	4,462.09 SF.	0.10 AC.	LOT 32	12,818.82 SF.	0.30 AC.	LOT 32	16,427.93 SF.	0.37 AC.
LOT 13	4,462.09 SF.	0.10 AC.	LOT 33	12,818.82 SF.	0.30 AC.	LOT 33	16,427.93 SF.	0.37 AC.
LOT 14	4,462.09 SF.	0.10 AC.	<b>BLOCK 5</b>			LOT 33	16,427.93 SF.	0.37 AC.
LOT 15	4,462.09 SF.	0.10 AC.	LOT 1	12,818.82 SF.	0.30 AC.	LOT 1	16,427.93 SF.	0.37 AC.
LOT 16	4,462.09 SF.	0.10 AC.	LOT 2	12,818.82 SF.	0.30 AC.	LOT 2	16,427.93 SF.	0.37 AC.
LOT 17	4,462.09 SF.	0.10 AC.	LOT 3	12,818.82 SF.	0.30 AC.	LOT 3	16,427.93 SF.	0.37 AC.
LOT 18	4,462.09 SF.	0.10 AC.	LOT 4	12,818.82 SF.	0.30 AC.	LOT 4	16,427.93 SF.	0.37 AC.
LOT 19	4,462.09 SF.	0.10 AC.	LOT 5	12,818.82 SF.	0.30 AC.	LOT 5	16,427.93 SF.	0.37 AC.
LOT 20	4,462.09 SF.	0.10 AC.	LOT 6	12,818.82 SF.	0.30 AC.	LOT 6	16,427.93 SF.	0.37 AC.
LOT 21	4,462.09 SF.	0.10 AC.	LOT 7	12,818.82 SF.	0.30 AC.	LOT 7	16,427.93 SF.	0.37 AC.
LOT 22	4,462.09 SF.	0.10 AC.	LOT 8	12,818.82 SF.	0.30 AC.	LOT 8	16,427.93 SF.	0.37 AC.
LOT 23	4,462.09 SF.	0.10 AC.	LOT 9	12,818.82 SF.	0.30 AC.	LOT 9	16,427.93 SF.	0.37 AC.
LOT 24	4,462.09 SF.	0.10 AC.	LOT 10	12,818.82 SF.	0.30 AC.	LOT 10	16,427.93 SF.	0.37 AC.
LOT 25	4,462.09 SF.	0.10 AC.	LOT 11	12,818.82 SF.	0.30 AC.	LOT 11	16,427.93 SF.	0.37 AC.
LOT 26	4,462.09 SF.	0.10 AC.	LOT 12	12,818.82 SF.	0.30 AC.	LOT 12	16,427.93 SF.	0.37 AC.
LOT 27	4,462.09 SF.	0.10 AC.	LOT 13	12,818.82 SF.	0.30 AC.	LOT 13	16,427.93 SF.	0.37 AC.
LOT 28	4,462.09 SF.	0.10 AC.	LOT 14	12,818.82 SF.	0.30 AC.	LOT 14	16,427.93 SF.	0.37 AC.
LOT 29	4,462.09 SF.	0.10 AC.	LOT 15	12,818.82 SF.	0.30 AC.	LOT 15	16,427.93 SF.	0.37 AC.
LOT 30	4,462.09 SF.	0.10 AC.	LOT 16	12,818.82 SF.	0.30 AC.	LOT 16	16,427.93 SF.	0.37 AC.
LOT 31	4,462.09 SF.	0.10 AC.	LOT 17	12,818.82 SF.	0.30 AC.	LOT 17	16,427.93 SF.	0.37 AC.
LOT 32	4,462.09 SF.	0.10 AC.	LOT 18	12,818.82 SF.	0.30 AC.	LOT 18	16,427.93 SF.	0.37 AC.
LOT 33	4,462.09 SF.	0.10 AC.	LOT 19	12,818.82 SF.	0.30 AC.	LOT 19	16,427.93 SF.	0.37 AC.

LOWEST FLOOR ELEVATION TABLE			LOWEST FLOOR ELEVATION TABLE			LOWEST FLOOR ELEVATION TABLE		
LOT NUMBER	MINIMUM OPENING ELEVATION		LOT NUMBER	MINIMUM OPENING ELEVATION		LOT NUMBER	MINIMUM OPENING ELEVATION	
<b>BLOCK 3</b>			<b>BLOCK 6</b>			<b>BLOCK 8</b>		
LOT 10	1172.4		LOT 1	1172.4		LOT 18	1172.4	
LOT 11	1172.4		LOT 2	1172.4		LOT 19	1172.4	
LOT 12	1172.4		LOT 3	1172.4		LOT 20	1172.4	
<b>BLOCK 10</b>			LOT 4	1172.4		LOT 21	1172.4	
LOT 1	1174.5		LOT 5	1172.4		LOT 22	1172.4	
LOT 2	1174.5		LOT 6	1172.4		LOT 23	1172.4	
LOT 3	1174.5		LOT 7	1172.4		LOT 24	1172.4	
LOT 4	1174.5		LOT 8	1172.4		LOT 25	1172.4	
LOT 5	1174.5		LOT 9	1172.4		LOT 26	1172.4	
LOT 6	1174.5		LOT 10	1172.4		LOT 27	1172.4	
LOT 7	1174.5		LOT 11	1172.4		LOT 28	1172.4	
LOT 8	1174.5		LOT 12	1172.4		LOT		