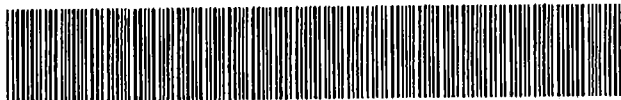




MISC 2007088009



AUG 02 2007 14:02 P 3

misc
 FEE 1550 FB 01-60000
 BKP 36-16-9^B/ C/O COMP
 DEL SCAN FV

Received - DIANE L. BATTIATO
 Register of Deeds, Douglas County, NE
 8/2/2007 14:02:45.70



2007088009

(Space above the line for recording information)

SANITARY AND IMPROVEMENT DISTRICT STATEMENT
 DOUGLAS COUNTY, NEBRASKA

STATE OF NEBRASKA)
) ss.
 COUNTY OF DOUGLAS)

Tim Cross, being first duly sworn, states that she is the Clerk of Sanitary and Improvement District No. 547 of Douglas County, Nebraska and makes the following statement regarding same:

1. District Number: 547
2. Outer Boundaries: See Exhibit "A" attached hereto and by this reference made a part hereof.
3. The purpose of this District shall be acquiring, installing, repairing, maintaining, renewing, operating and replacing electrical service lines and conduits, a sewer system, a water system, a system of sidewalks, public roads, streets and highways, a civil defense warning system, to contract for water for fire protection and for resale to the residents of the District, and to contract for gas and electricity, for street lighting for the public streets and highways within the District and to acquire, improve and operate public parks, playgrounds and recreational facilities. The District shall have all of the powers and authorities as are permitted by law, to achieve the purposes herein above set forth, including, but not in limitation of the foregoing, the power and authority to contract with corporations, utility companies, or municipalities for water for fire protection and for resale to the residents of the District, and for electricity and gas, for street lighting of the public streets and highways within the District and for the disposal of sewage in the use of existing sewer improvement facilities and for the operation and maintenance of electrical service lines and conduits.
4. The District has the power to levy an unlimited property tax to pay its debts and its expenses of operation and maintenance.
5. The District is required by statute to levy special assessments on property in the District to the full extent of special benefits arising by reason of improvements installed by it.
6. In all years when a budget is required by law, the District's annual budget is filed with the County Clerk, which budget shows anticipated revenue and expenses, levy, and indebtedness of the District.
7. The actual current levy of the District may be obtained from the County Clerk.

✓ 37026

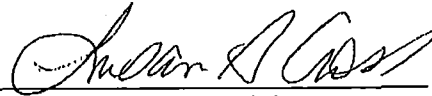
RETURN TO:
 FULLENKAMP, DOYLE & JOBEUN
 11440 WEST CENTER ROAD
 OMAHA, NEBRASKA 68144-4482
 ATTN: Brianna Johnson

8. A copy of the District's annual financial audit is on file with the Clerk of the District and the State Auditor of Public Accounts.



Tim Cross, CLERK

SUBSCRIBED and sworn to before me this 1st day of August, 2007.



Notary Public



S.I.D. BOUNDARY

LEGAL DESCRIPTION

That part of the Southwest Quarter and that part of the West Half of the Southeast Quarter all in Section 36, Township 16 North, Range 9 East of the 6th P.M., Douglas County, Nebraska, lying south of the south right of way line of the Union Pacific Railroad, the entire parcel described by metes and bounds as follows:

Beginning at the intersection of the west line of Tax Lot 9 in the East Half of the Southeast Quarter of Section 36 and the south right of way line of the Union Pacific Railroad as monumented with a 5/8" rebar with 1 1/4" yellow plastic cap stamped LS 545;

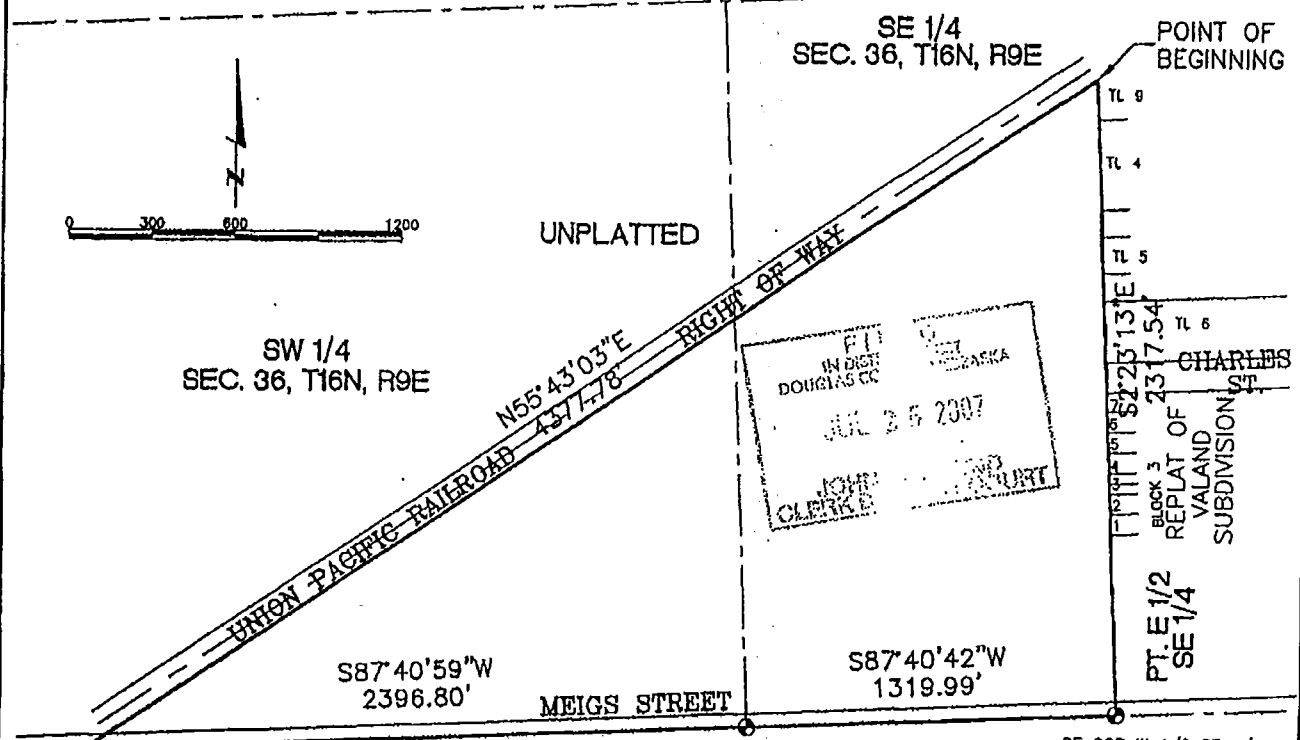
Thence South 02°23'13" East (bearings referenced to Nebraska State Plane NAD83) for 2317.54 feet along the east line of said West Half of the Southeast Quarter of Section 36 to the southeast corner thereof;

Thence South 87°40'42" West for 1319.99 feet along the south line of the said West Half of the Southeast Quarter of Section 36 to the brass cap at the southwest corner thereof;

Thence South 87°40'59" West for 2396.80 feet along the south line of the said Southwest Quarter of Section 36 to the intersection with the south right of way line of the Union Pacific railroad;

Thence North 55°43'03" East for 4377.78 feet along said south right of way line parallel with and 50.00 feet south of the centerline of said Union Pacific Railroad to the Point of Beginning.

Contains 98.876 acres including 4.221 acres of existing right of way for Meigs Street.



<p>SW COR SW 1/4 SEC. 36, T16N, R9E FOUND BRASS CAP IN CONCRETE BASE -24.75' SW TO NORTHEAST CORNER OF EAST TELEPHONE JUNCTION BOX 3.20' HIGH -56.31' WSW TO "X" NAILS IN NORTHEAST FACE OF POWER POLE 4.10' HIGH -53.05' W TO CHISELED "X" IN EAST FACE OF GATE POST 1.15' HIGH -58.25' NW TO CHISELED "X" IN EAST FACE OF GATE POST 1.08' HIGH</p>	<p>SEC. 1, T15N, R9E</p>	<p>SW COR. SE 1/4 SEC. 36, T16N, R9E FOUND BRASS CAP -53.31' SSE TO NAIL IN NORTH FACE OF WEST RR TIE BRACE POST 1.59' HIGH -52.24' SSW TO NAIL IN NORTH FACE OF ROUND WOODEN GATE POST 1.00' HIGH -58.30' SW TO NAIL IN NORTH FACE OF RR TIE GATE POST 1.83' HIGH -81.83' SW TO NAIL W/DIST IN NORTH FACE OF POWER POLE 5.45' HIGH</p>
---	---------------------------------	--

<p>Lamp, Rynearson & Associates, Inc. 14710 West Dodge Road, Suite 100 Omaha, Nebraska 68154-2027</p>	<p>WWW.LRA-INC.COM</p> <p>(Ph) 402.496.2498 (Fax) 402.496.2730</p>	<p>drawn by: EAM designer: RDP job number-task: 77020.01-003 date: 7-5-07 book: 77020-900 file name: BOUNDARY.dwg</p>
--	---	--

EXHIBIT "A"