

# FOX HOLLOW ADDITION



1" = 100'  
Dashed Line Shown  
On Lot Lines Denotes  
10' Utility Easement,  
5' On Each Side

T. 10 N., R. 7 E.  
T. 9 N., R. 7 E.

Point of Beginning

S. 0°-59' W. 762.95'  
S. 42°-49' E. 390.0'  
N. 5°-4' Section 3, T. 9 N., R. 7 E.

Lot 1, I.T.  
S. 89°-26' E. 150.0'  
N. 1°-01' E. 307.0'

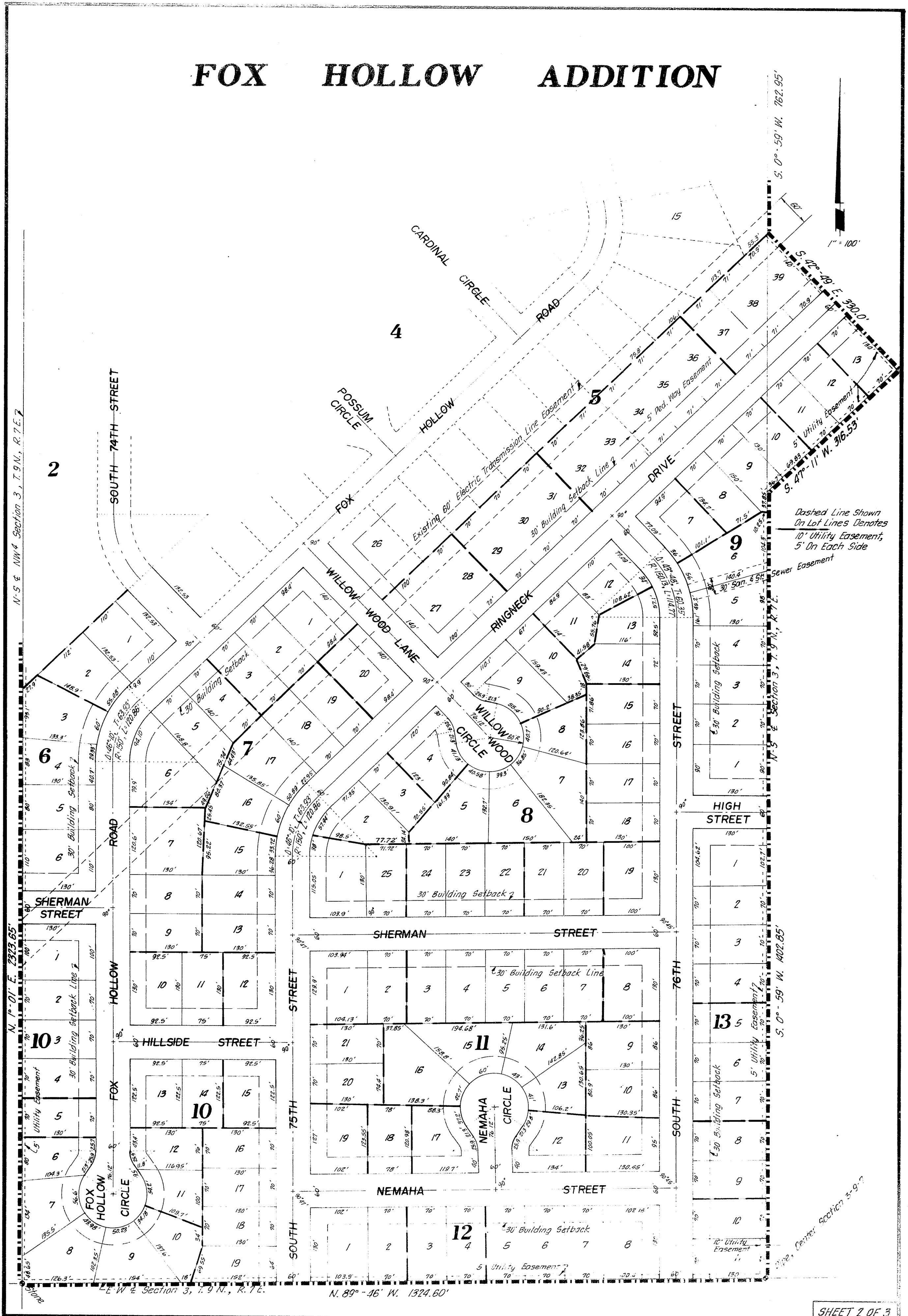
N. 1°-01' E. 232.65'  
L. 5' Utility Easement

OUTLOT "B"  
249.9'

# 76-23213

# FOX HOLLOW ADDITION

# 76-23213



N. 5 & NW 4 Section 3, T. 9 N., R. 7 E. 7

N. 1° 01' E. 233.65'

None

L. W. & Section 3, T. 9 N., R. 7 E.

N. 89° - 46' W. 1324.60'

N. 5 & Section 3, T. 9 N., R. 7 E.

S. 0° - 59' W. 1402.85'

Center Section 5-9-7

Dashed Line Shown On Lot Lines Denotes 10' Utility Easement, 5' On Each Side

Sewer Easement

# FOX HOLLOW ADDITION

## DEDICATION

Dedication of the foregoing plat, known as FOX HOLLOW ADDITION, and as described in the Surveyor's Certificate to this plat, is made with the free consent and in accordance with the desire of the undersigned sole owners and proprietors and the easements shown thereon are hereby granted in perpetuity to the City of Lincoln, the Lincoln Telephone and Telegraph Lines, and other public utilities, their successors and assigns, to construct, operate, maintain, repair and replace storm sewers, sanitary sewers, water mains, conduits, buried cables, wires, poles, all commercial antenna television facilities, and all appurtenances thereto, over, upon or under the easements as shown on the foregoing plat. The streets shown hereon are hereby dedicated to the use of the public.

Witness our hands this 3rd day of August, 1976

Robert W. Reeves & Louise E. Reeves  
Husband and Wife

C. M. Pierson  
C. M. Pierson - Trustee

By: David C. Pierson  
David C. Pierson, Trustee  
Attorney-in-Fact

## ACKNOWLEDGEMENT

STATE OF NEBRASKA

31

LANCASTER COUNTY

On this 3rd day of August, 1976, before me, the undersigned, a Notary Public, duly commissioned, qualified for and residing in said county, personally came David C. Pierson, as Attorney-in-Fact for Robert W. Reeves and Louise E. Reeves, husband and wife and C. M. Pierson, Trustee, to me personally known to be the identical persons whose names are affixed to the dedication of this plat and they each acknowledged the same to be their voluntary act and deed.

John F. Blin  
Notary Public

My commission expires the 11th day of April, 1980

## SURVEYOR'S CERTIFICATE

I hereby certify that I have accurately surveyed and staked out the foregoing plat of "Fox Hollow Addition," a subdivision of Lot 2, I.T., all of the SE 1/4 of the NW 1/4 of Section 3, and a part of Lot 30, I.T., all located in the North 1/2 of Section 3, T. 9 N., R. 7 E., of the 6th P.M., Lancaster County, Nebraska, and more particularly described as follows:

Beginning at a point 33.0 feet south of the North 1/4 corner of said Section;  
thence S. 0°-59' W., along the north-south centerline of said Section 3, a distance of 762.95 feet;  
thence S. 42°-49' E., a distance of 330.0 feet;  
thence S. 47°-11' W., a distance of 316.53 feet;  
thence S. 0°-59' W., a distance of 1402.85 feet; to the center of said Section 3;  
thence N. 89°-46' W., along the east-west centerline of said Section 3, a distance of 1324.6 feet;  
thence N. 1°-01' E., a distance of 2323.65 feet;  
thence S. 89°-26' E., a distance of 150.0 feet;  
thence N. 1°-01' E., a distance of 307.0 feet;  
thence S. 89°-26' E., a distance of 1172.96 feet to the point of beginning, containing 79.97 Acres, more or less.

Iron pipe monuments have been placed at all lot corners, street intersection, points of curvature, centerline points of tangency and at all other points required by the City of Lincoln Land Subdivision Ordinance, Title 26 of the Lincoln Municipal Code.

All dimensions are chord measurements unless shown otherwise, and are in feet or decimals of a foot.

Signed this 2nd day of August, 1976

Lyle L. Lyle  
L. Lyle & Co., L.S. 314  
107 South 10th Street, Lincoln, Nebraska 68508  
NEBRASKA REGISTERED LAND SURVEYOR LYLE L. LYLE

## APPROVAL

The foregoing plat was approved by the Lincoln City-Lancaster County Planning Commission on this 25th day of AUG, 1976

ATTEST: H.R. Williams  
Chairman

## ACCEPTANCE

The foregoing plat and dedication was approved and accepted by the City Council of the City of Lincoln, Nebraska, by Ordinance No. 11779, passed the 20th day of September, 1976

ATTEST: M.E. Smith  
City Clerk

9-69  
51544

76-23213