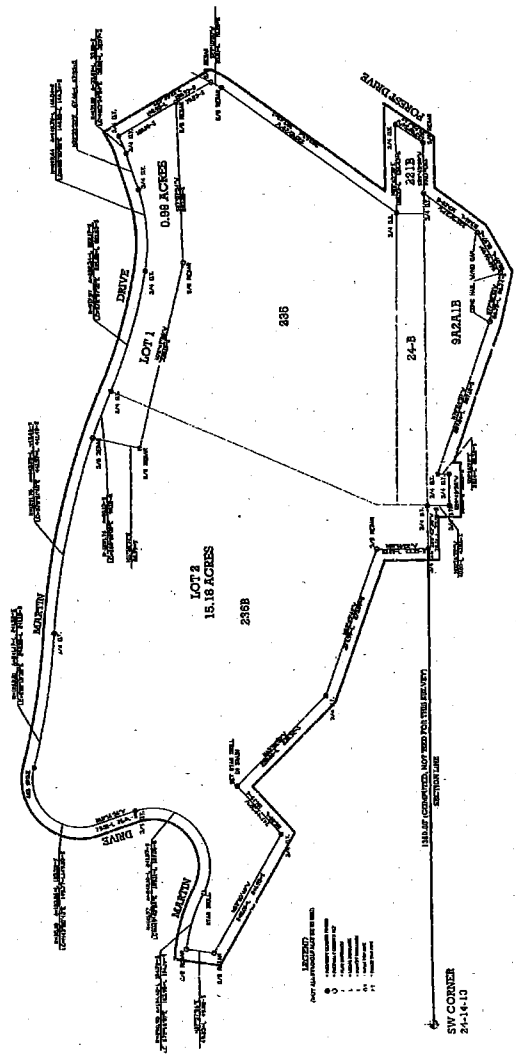


FONTENELLE REPLAT I

ALL OF LOT 235, PART OF LOT 221 (A.K.A. LOT 221B) AND 236 (A.K.A. LOT 236B), FONTENELLE, A SUBDIVISION, AS PLATTED AND RECORDED, AND ALL OF TAX LOT 24-B IN SECTION 24, AND PART OF TAX LOT 9A2A1 (A.K.A. LOT 9A2A1B) LOCATED IN SECTION 25, ALL IN TOWNSHIP 14 NORTH, RANGE 13 EAST OF THE SIXTH P.M., SARY COUNTY, NEBRASKA.

RECORDING TAXES AND FEES: \$1.00
 COUNTY OF SARY, NEBRASKA
 COUNTY CLERK
 11/15/2007

RECORDING TAXES AND FEES: \$1.00
 COUNTY OF SARY, NEBRASKA
 COUNTY CLERK
 11/15/2007



APPROVAL OF SARY COUNTY BOARD OF SUPERVISORS
 COUNTY OF SARY, NEBRASKA
 COUNTY CLERK
 11/15/2007

APPROVAL OF SARY COUNTY BOARD OF SUPERVISORS
 COUNTY OF SARY, NEBRASKA
 COUNTY CLERK
 11/15/2007

COUNTY TREASURER CERTIFICATION
 TAXES ASSESSED AND LEVIED FOR THE CURRENT YEAR ARE NEITHER DUE NOR PAID. TREASURER'S CERTIFICATION IS ONLY VALID UNTIL DECEMBER 30th OF THIS YEAR.

APPROVAL OF SARY COUNTY BOARD OF SUPERVISORS
 COUNTY OF SARY, NEBRASKA
 COUNTY CLERK
 11/15/2007

FILED-SARY CO. NE.

11/15/2007

90 S.W. - 7 P.M. 33

REGISTER OF DEEDS

Counter: 11/15/2007
 D.E.:
 Proof:
 Fees: \$1.00
 Cash: \$1.00

RECORDING TAXES AND FEES: \$1.00
 COUNTY OF SARY, NEBRASKA
 COUNTY CLERK
 11/15/2007

RECORDING TAXES AND FEES: \$1.00
 COUNTY OF SARY, NEBRASKA
 COUNTY CLERK
 11/15/2007



RECORDING TAXES AND FEES: \$1.00
 COUNTY OF SARY, NEBRASKA
 COUNTY CLERK
 11/15/2007

APPROVAL OF SARY COUNTY BOARD OF SUPERVISORS
 COUNTY OF SARY, NEBRASKA
 COUNTY CLERK
 11/15/2007

APPROVAL OF SARY COUNTY BOARD OF SUPERVISORS
 COUNTY OF SARY, NEBRASKA
 COUNTY CLERK
 11/15/2007

APPROVAL OF SARY COUNTY BOARD OF SUPERVISORS
 COUNTY OF SARY, NEBRASKA
 COUNTY CLERK
 11/15/2007

APPROVAL OF SARY COUNTY BOARD OF SUPERVISORS
 COUNTY OF SARY, NEBRASKA
 COUNTY CLERK
 11/15/2007

APPROVAL OF SARY COUNTY BOARD OF SUPERVISORS
 COUNTY OF SARY, NEBRASKA
 COUNTY CLERK
 11/15/2007

APPROVAL OF SARY COUNTY BOARD OF SUPERVISORS
 COUNTY OF SARY, NEBRASKA
 COUNTY CLERK
 11/15/2007

FONTENELLE REPLAT I

DWS SURVEYING
 2913 SHEKIDAN ROAD BELLEVUE, NE 68123
 (402) 292-1221

DATE: APRIL 30, 1998
 JOB NO. 23-76

NORTH
 SCALE: 1" = 100'

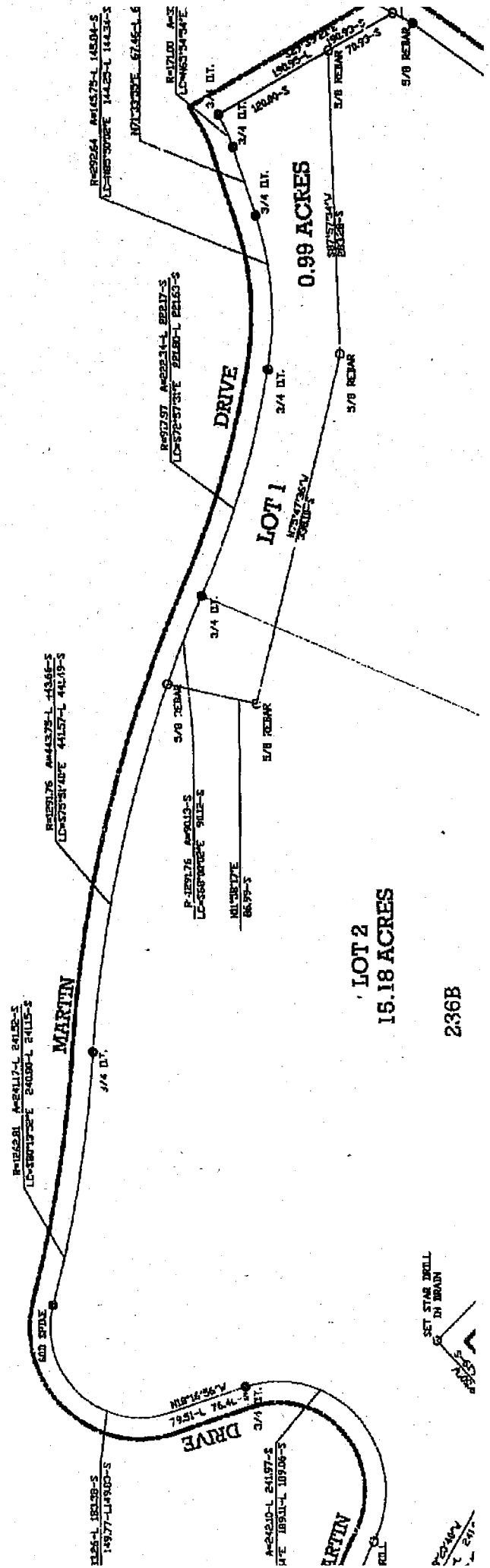


**PLATTED AND RECORDED, AND ALL OF THE SAME
SECTION 24, AND PART OF TAX LOT 9A2A1 (A.K.A. LOT
9A2A1B) LOCATED IN SECTION 25, ALL IN TOWNSHIP 14
NORTH, RANGE 13 EAST OF THE SIXTH P.M., SARPY
COUNTY, NEBRASKA.**

EASEMENT Terms and conditions of right-of-way Easement dated November 28, 1988 filed November 27, 1988 in Book 58 at page 2688, for ingress and egress to this subject property over adjacent property.

EASEMENT dated August 24 1972, filed December 29, 1972 in Book 48 at Page 718 granted to Omaha Public Power District and Northwestern Bell Telephone Company, for utility installation and maintenance on, over, through, under and across a portion of the subject property.

EASEMENT Terms and conditions of dated November 23, 1985, filed Nov 28 at page 2690, granted to Founteul Partnership, for ingress and egress 1 over adjacent property.



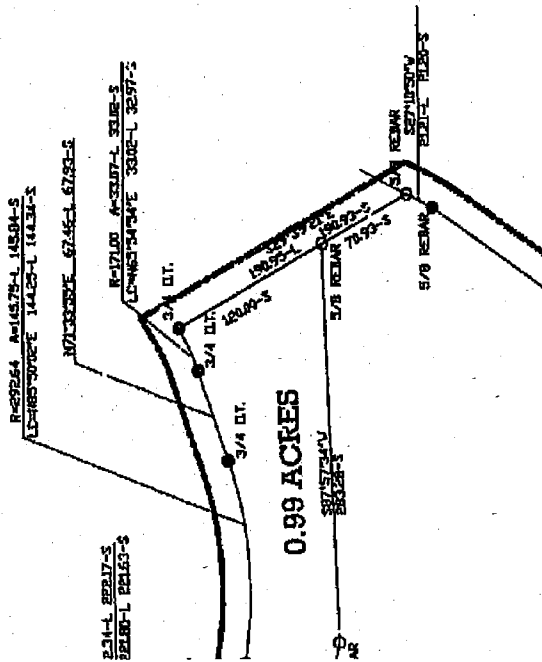
SET STAKES
IN BRUSH

236B

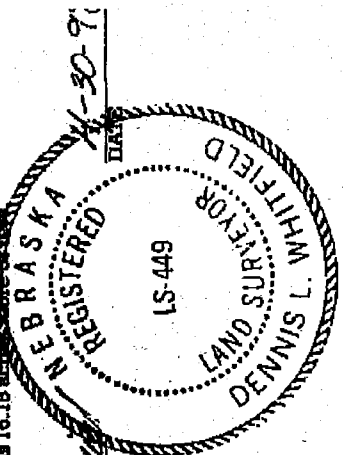
(A.K.A.) LOT OWNSHIP 14 M., SARPY

Counter 1500
 Verify 1500
 D.E. _____
 Proof _____
 Fee \$ 18.50
 Ck Cash Chq
 1500
 2500
 1500

EASE, ZANT Terms and conditions of right-of-way Easement dated November 23, 1888, filed November 27, 1888 in Book 58 at page 2580, granted to Fontenelle Hills Company, a Partnership, for ingress and egress to the subject property over adjacent property.



thence North 77°02'31" West a distance of 88.75 feet; thence North 70°24'51" West a distance of 30.14 feet; thence South 88°43'38" West a distance of 40.00 feet to the Southwest corner of Tax Lot 24-B (a.k.a. FONTENELLE); thence South 89°48'36" West a distance of 76.01 feet along the South 1/4 of Section 16; thence North 89°48'43" West a distance of 27.00 feet; thence South 47°48'29" West a distance of 118.00 feet; thence North 07°57'09" East a distance of 49.83 feet to the South Drive; thence along said R.O.W. on the following described course: Along a curve to the left having a radius of 104.48 feet, and a long chord bearing South 72°16'01" East for 189.11 feet; thence North 18°18'58" West a distance of 79.81 feet; thence along a curve to the left having a radius of 183.26 feet, and a long chord bearing North 43°22'40" East for 240.80 feet; thence along a curve to the right having a radius of 128.80 feet, and a long chord bearing South 78°51'40" East for 441.57 feet; thence along a curve to the left having a radius of 282.64 feet, and a long chord bearing South 72°47'31" East for 144.25 feet; thence North 71°33'58" East a distance of 87.48 feet; thence along a curve to the right having a radius of 33.07 feet, and a long chord bearing North 68°34'34" East for 171.00 feet. Described parcel contains 18.18 acres.



Dennis L. Whitfield
 DENNIS L. WHITFIELD L.S. NO. 449

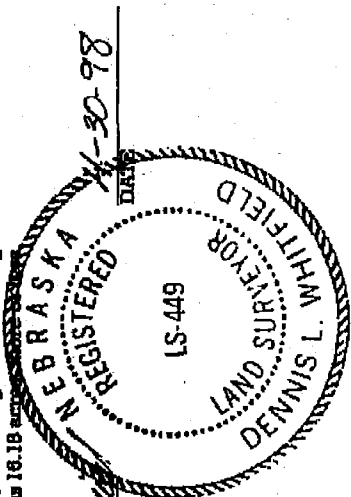
KNOW ALL MEN BY THESE PRESENTS THAT WE, FONTENELLE HILLS ASSOCIATES, A PARTNERSHIP, AND CONTINENTAL FONTENELLE, INC., A NEVADA CORPORATION, THE PROPERTY DESCRIBED WITHIN THE SURVEYOR'S CERTIFICATE AND EMBRACE CAUSED SAID LAND TO BE RELIANT AS SHOWN, SAID ADDITION BE HEREAFTER REPEAT 1", AND WE DO HEREBY RAISE AND APPROVE OF THE DISPOSITION OF OI THIS PLAT TO INCLUDE ALL PREVIOUSLY RECORDED EASEMENTS ON SAID PROPER IN WITNESS WHEREOF, WE DO SET MY NAME THIS 15TH DAY OF MAY

Richard Baker
 FONTENELLE HILLS ASSOCIATES, A NEBRASKA LIMITED PARTNERSHIP
 BY: *Richard Baker*
James R. Enders

FINA
FONTENELLE

REVEYING
D BELLEVUE, NE 68123
292-1221

distances of 242.00 feet; thence North 07°27'06" East a distance of 49.83 feet to the Southerly right-of-way line of Martin Drive; thence along said R.O.W. on the following described courses: Along a curve to the right having a radius of 288.83 feet an arc length of 104.48 feet, and a long chord bearing South 78°16'01" East for 103.83 feet; thence along a curve to the left having a radius of 101.87 feet, an arc length of 242.10 feet, and a long chord bearing North 49°43'54" East for 189.11 feet; thence North 18°15'55" West a distance of 79.51 feet; thence along a curve to the right having a radius of 88.00 feet, an arc length of 183.28 feet, and a long chord bearing North 43°28'43" East for 149.77 feet; thence along a curve to the left having a radius of 1282.81 feet, an arc length of 241.17 feet, and a long chord bearing South 80°13'53" East for 240.80 feet; thence along a curve to the right having a radius of 1281.78 feet, an arc length of 443.76 feet, and a long chord bearing South 78°21'40" East for 441.57 feet; thence along a curve to the left having a radius of 917.97 feet, an arc length of 233.34 feet, and a long chord bearing South 72°37'31" East for 221.80 feet; thence along a curve to the left having a radius of 282.84 feet, an arc length of 148.75 feet, and a long chord bearing North 85°28'02" East for 144.25 feet; thence North 71°33'55" East a distance of 87.48 feet; thence along a curve to the left having a radius of 171.00 feet, an arc length of 33.07 feet, and a long chord bearing North 66°24'84" East for 83.02 feet to the point of beginning. Described parcel contains 18.18 acres.



Dennis L. Whitfield
DENNIS L. WHITEFIELD L.S. NO. 449
DATE 11-30-98

DEDICATION
KNOW ALL MEN BY THESE PRESENTS THAT WE, FONTENELLE HILLS ASSOCIATES, A NEBRASKA LIMITED PARTNERSHIP, AND CONTINENTAL FONTENELLE, INC., A NEVADA CORPORATION BEING THE SOLE OWNERS OF THE PROPERTY DESCRIBED WITHIN THE SURVEYOR'S CERTIFICATE AND EMBRACED WITHIN THIS PLAT, HAVE CAUSED SAID LAND TO BE REPLATED AS SHOWN, SAID ADDITION BE HEREAFTER KNOWN AS "FONTENELLE REPLAT 1", AND WE DO HEREBY RATIFY AND APPROVE OF THE DISPOSITION OF OUR PROPERTY AS SHOWN ON THIS PLAT TO INCLUDE ALL PREVIOUSLY RECORDED EASEMENTS ON SAID PROPERTY.
IN WITNESS WHEREOF, WE DO SET MY NAME THIS 31st DAY OF MAY, 1998.

Howard Baker
FONTENELLE HILLS ASSOCIATES, A NEBRASKA LIMITED PARTNERSHIP
BY: HOWARD BAKER
Bruce A. Endendyck
CONTINENTAL FONTENELLE, INC., A NEVADA CORPORATION
BY: BRUCE A. ENDENDYCK, EXECUTIVE VICE PRESIDENT

18.50
500
Chy
54
25
25
25