

98-27235

FASE ADDITION

THOMPSON, DRESSSEN & DORNER, INC. CONSULTING ENGINEERS & LAND SURVEYORS

200-250- A200250205A

DATE: 6-11-98

SURVEYOR'S CERTIFICATE

I HEREBY CERTIFY THAT I HAVE MADE A BOUNDARY SURVEY OF THE SUBDIVISION DESCRIBED HEREIN AND THAT PERMANENT MARKERS HAVE BEEN FOUND OR SET AT ALL CORNERS OF SAID BOUNDARY AND AT ALL LOT CORNERS WITHIN SAID SUBDIVISION TO BE KNOWN AS FASE ADDITION, LOT 1, BEING A PLATTING OF THAT PART OF THE SE 1/4 OF SECTION 1, T13N, R12E OF THE 6TH P.M., SAPPY COUNTY, NEBRASKA, DESCRIBED AS FOLLOWS: BEGINNING AT THE SE CORNER OF SAID SE 1/4; THENCE WEST (ASSUMED BEARING) 260.00 FEET ON THE SOUTH LINE OF SAID SE 1/4;

THENCE N00°18'00"E 280.00 FEET ON A LINE 260.00 FEET WEST OF AND PARALLEL WITH THE EAST LINE OF SAID SE 1/4; THENCE EAST 260.00 FEET ON A LINE 280.00 FEET NORTH OF AND PARALLEL WITH THE SOUTH LINE OF SAID SE 1/4 TO THE EAST LINE THEREOF; THENCE S00°18'00"W 280.00 FEET ON THE EAST LINE OF SAID SE 1/4 TO THE POINT OF BEGINNING.

County: Ne
Verify: dy
D.E.: W
Proof: W
Fee \$: 16.00
Chk: 2500000000

Filed For Record: 9-28-98 at 9:50A
Instrument # 278-027235
Lloyd J. Dowling Register of Deeds Sappo City, NE



JAMES D. WARNER
NEBRASKA RLS 308

DEDICATION

KNOW ALL MEN BY THESE PRESENTS: THAT WE, ROBERT W. FASE AND KAREN K. FASE, HUSBAND AND WIFE, BEING THE OWNERS OF THE LAND DESCRIBED WITHIN THE SURVEYOR'S CERTIFICATE AND EMBRACED WITHIN THIS PLAT, HAVE CAUSED SAID LAND TO BE SUBDIVIDED INTO STREETS AND A LOT TO BE NAMED AND NUMBERED AS SHOWN, SAID SUBDIVISION TO BE HEREAFTER KNOWN AS FASE ADDITION, AND WE DO HEREBY RATIFY AND APPROVE OF THE DISPOSITION OF OUR PROPERTY AS SHOWN ON THIS PLAT, AND WE HEREBY DEDICATE TO THE PUBLIC, FOR PUBLIC USE, THE STRAIGHT LINES, CURVES, AND ANY COMPANY, WHICH HAS BEEN GRANTED A FRANCHISE TO PROVIDE A CABLE TELEVISION SYSTEM, IN THE AREA TO BE SUBDIVIDED, THEIR SUCCESSORS AND ASSIGNS TO ERECT, MAINTAIN, REPAIR, AND RENEW POLES, WIRES, CROSSARMS, DOWN GUYS AND ANCHORS, CABLES, CONDUITS AND OTHER RELATED FACILITIES AND TO EXTEND THEREON WIRES OR CABLES FOR THE CARRYING AND TRANSMISSION OF ELECTRIC CURRENT FOR LIGHT, HEAT, AND POWER FOR THE TRANSMISSION OF SIGNALS AND SOUNDS OF ALL KINDS AND THE RECEPTION THEREOF, INCLUDING SIGNALS PROVIDED BY A CABLE TELEVISION SYSTEM AND THEIR RECEPTION, ON, OVER, THROUGH, UNDER AND ACROSS A FIVE (5') FOOT WIDE STRIP OF LAND ABUTTING THE FRONT AND SIDE BOUNDARY LOT LINES AND AN EIGHT (8') FOOT WIDE STRIP OF LAND ABUTTING THE REAR BOUNDARY LINE. NO PERMANENT BUILDINGS, TREES, RETAINING WALLS OR LOOSE ROCK WALLS SHALL BE PLACED IN SAID EASEMENT WAYS, BUT THE SAME MAY BE USED FOR GARDENS, SHRUBS, LANDSCAPING, SIDEWALKS, DRIVEWAYS, AND OTHER PURPOSES THAT DO NOT THEN OR LATER INTERFERE WITH THE AFORESAID USES OR RIGHTS HEREIN GRANTED.

Karen K. Fase
KAREN K. FASE

Robert W. Fase
ROBERT W. FASE

ACKNOWLEDGEMENT OF NOTARY

STATE OF NEBRASKA)
COUNTY OF SAPPY) SS

THE FOREGOING DEDICATION WAS ACKNOWLEDGED BEFORE ME THIS 11th DAY OF July, 1998, BY ROBERT W. FASE AND KAREN K. FASE, HUSBAND AND WIFE.

SAPPY COUNTY TREASURER'S CERTIFICATE

I HEREBY CERTIFY THAT THE RECORDS OF MY OFFICE SHOW NO TAXES DUE OR DELINQUENT UPON THE LAND DESCRIBED IN THE SURVEYOR'S CERTIFICATE AS APPEARS ON THIS PLAT AS OF THIS DATE.

CURRENT YEAR ARE NEITHER DUE NOR PAID. TREASURER'S CERTIFICATION IS ONLY VALID UNTIL DECEMBER 31st OF THIS YEAR.

APPROVAL BY SAPPY COUNTY TREASURER

Christina B...
CHAIRMAN

APPROVAL BY PAPPILLION CITY PLANNING BOARD

THIS PLAT OF FASE ADDITION WAS APPROVED BY THE PAPPILLION CITY PLANNING BOARD, OF THE CITY OF PAPPILLION, NEBRASKA ON THIS 29 DAY OF July, 1998.

Christina B...
CHAIRMAN



Christina B...
SAPPY COUNTY SURVEYOR

APPROVAL BY PAPPILLION CITY ENGINEER

THIS PLAT OF FASE ADDITION WAS APPROVED BY THE PAPPILLION CITY ENGINEER OF THE CITY OF PAPPILLION, NEBRASKA ON THIS 29th DAY OF July, 1998.

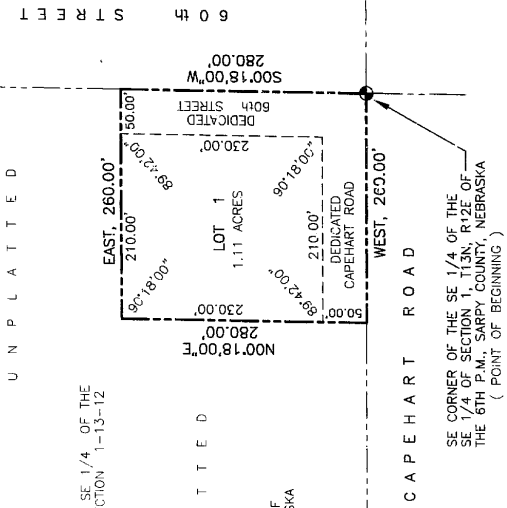
Robert W. Fase
CITY ENGINEER

REVIEW BY THE SAPPY COUNTY SURVEYOR'S OFFICE

THIS PLAT OF FASE ADDITION WAS REVIEWED BY THE SAPPY COUNTY SURVEYOR'S OFFICE ON THIS 29th DAY OF July, 1998.

FASE ADDITION

LOT 1,
BEING A PLATTING OF PART OF THE SE 1/4 OF THE SE 1/4 OF SECTION 1, T13N, R12E, OF THE 6TH P.M., SAPPY COUNTY, NEBRASKA.



UNPLATTED

PART OF THE SE 1/4 OF THE SE 1/4 OF SECTION 1, T13N, R12E, OF THE 6TH P.M., SAPPY COUNTY, NEBRASKA

UNPLATTED

PART OF THE SE 1/4 OF THE SE 1/4 OF SECTION 1, T13N, R12E, OF THE 6TH P.M., SAPPY COUNTY, NEBRASKA

CAPEHART ROAD

SE CORNER OF THE SE 1/4 OF THE SE 1/4 OF SECTION 1, T13N, R12E, OF THE 6TH P.M., SAPPY COUNTY, NEBRASKA (POINT OF BEGINNING)

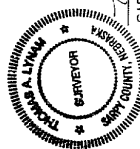
APPROVAL BY PAPPILLION CITY ENGINEER

THIS PLAT OF FASE ADDITION WAS APPROVED BY THE PAPPILLION CITY ENGINEER OF THE CITY OF PAPPILLION, NEBRASKA ON THIS 29th DAY OF July, 1998.

Robert W. Fase
CITY ENGINEER

REVIEW BY THE SAPPY COUNTY SURVEYOR'S OFFICE

THIS PLAT OF FASE ADDITION WAS REVIEWED BY THE SAPPY COUNTY SURVEYOR'S OFFICE ON THIS 29th DAY OF July, 1998.



Christina B...
SAPPY COUNTY SURVEYOR

ACCEPTANCE OF PAPPILLION CITY COUNCIL

THIS PLAT OF FASE ADDITION WAS APPROVED AND ACCEPTED BY THE PAPPILLION CITY COUNCIL OF THE CITY OF PAPPILLION, NEBRASKA, THIS 29th DAY OF July, 1998, IN ACCORDANCE WITH THE STATE STATUTES OF NEBRASKA.

Christina B...
CITY CLERK



Christina B...
MAYOR

APPROVAL BY PAPPILLION CITY PLANNING BOARD

THIS PLAT OF FASE ADDITION WAS APPROVED BY THE PAPPILLION CITY PLANNING BOARD, OF THE CITY OF PAPPILLION, NEBRASKA ON THIS 29 DAY OF July, 1998.

Christina B...
CHAIRMAN



Christina B...
MAYOR

APPROVAL BY PAPPILLION CITY PLANNING BOARD

THIS PLAT OF FASE ADDITION WAS APPROVED BY THE PAPPILLION CITY PLANNING BOARD, OF THE CITY OF PAPPILLION, NEBRASKA ON THIS 29 DAY OF July, 1998.

Christina B...
CHAIRMAN



Christina B...
MAYOR

APPROVAL BY PAPPILLION CITY PLANNING BOARD

THIS PLAT OF FASE ADDITION WAS APPROVED BY THE PAPPILLION CITY PLANNING BOARD, OF THE CITY OF PAPPILLION, NEBRASKA ON THIS 29 DAY OF July, 1998.

Christina B...
CHAIRMAN



Christina B...
MAYOR

APPROVAL BY PAPPILLION CITY PLANNING BOARD

THIS PLAT OF FASE ADDITION WAS APPROVED BY THE PAPPILLION CITY PLANNING BOARD, OF THE CITY OF PAPPILLION, NEBRASKA ON THIS 29 DAY OF July, 1998.

Christina B...
CHAIRMAN



Christina B...
MAYOR

APPROVAL BY PAPPILLION CITY PLANNING BOARD

THIS PLAT OF FASE ADDITION WAS APPROVED BY THE PAPPILLION CITY PLANNING BOARD, OF THE CITY OF PAPPILLION, NEBRASKA ON THIS 29 DAY OF July, 1998.

Christina B...
CHAIRMAN



Christina B...
MAYOR

APPROVAL BY PAPPILLION CITY PLANNING BOARD

THIS PLAT OF FASE ADDITION WAS APPROVED BY THE PAPPILLION CITY PLANNING BOARD, OF THE CITY OF PAPPILLION, NEBRASKA ON THIS 29 DAY OF July, 1998.

Christina B...
CHAIRMAN



Christina B...
MAYOR

APPROVAL BY PAPPILLION CITY PLANNING BOARD

THIS PLAT OF FASE ADDITION WAS APPROVED BY THE PAPPILLION CITY PLANNING BOARD, OF THE CITY OF PAPPILLION, NEBRASKA ON THIS 29 DAY OF July, 1998.

Christina B...
CHAIRMAN



Christina B...
MAYOR

APPROVAL BY PAPPILLION CITY PLANNING BOARD

THIS PLAT OF FASE ADDITION WAS APPROVED BY THE PAPPILLION CITY PLANNING BOARD, OF THE CITY OF PAPPILLION, NEBRASKA ON THIS 29 DAY OF July, 1998.

Christina B...
CHAIRMAN



Christina B...
MAYOR

APPROVAL BY PAPPILLION CITY PLANNING BOARD

THIS PLAT OF FASE ADDITION WAS APPROVED BY THE PAPPILLION CITY PLANNING BOARD, OF THE CITY OF PAPPILLION, NEBRASKA ON THIS 29 DAY OF July, 1998.

Christina B...
CHAIRMAN



Christina B...
MAYOR

APPROVAL BY PAPPILLION CITY PLANNING BOARD

THIS PLAT OF FASE ADDITION WAS APPROVED BY THE PAPPILLION CITY PLANNING BOARD, OF THE CITY OF PAPPILLION, NEBRASKA ON THIS 29 DAY OF July, 1998.

Christina B...
CHAIRMAN



Christina B...
MAYOR

APPROVAL BY PAPPILLION CITY PLANNING BOARD

THIS PLAT OF FASE ADDITION WAS APPROVED BY THE PAPPILLION CITY PLANNING BOARD, OF THE CITY OF PAPPILLION, NEBRASKA ON THIS 29 DAY OF July, 1998.

Christina B...
CHAIRMAN



Christina B...
MAYOR

APPROVAL BY PAPPILLION CITY PLANNING BOARD

THIS PLAT OF FASE ADDITION WAS APPROVED BY THE PAPPILLION CITY PLANNING BOARD, OF THE CITY OF PAPPILLION, NEBRASKA ON THIS 29 DAY OF July, 1998.

Christina B...
CHAIRMAN



Christina B...
MAYOR

APPROVAL BY PAPPILLION CITY PLANNING BOARD

THIS PLAT OF FASE ADDITION WAS APPROVED BY THE PAPPILLION CITY PLANNING BOARD, OF THE CITY OF PAPPILLION, NEBRASKA ON THIS 29 DAY OF July, 1998.

Christina B...
CHAIRMAN



Christina B...
MAYOR

APPROVAL BY PAPPILLION CITY PLANNING BOARD

THIS PLAT OF FASE ADDITION WAS APPROVED BY THE PAPPILLION CITY PLANNING BOARD, OF THE CITY OF PAPPILLION, NEBRASKA ON THIS 29 DAY OF July, 1998.

Christina B...
CHAIRMAN



Christina B...
MAYOR

APPROVAL BY PAPPILLION CITY PLANNING BOARD

THIS PLAT OF FASE ADDITION WAS APPROVED BY THE PAPPILLION CITY PLANNING BOARD, OF THE CITY OF PAPPILLION, NEBRASKA ON THIS 29 DAY OF July, 1998.

Christina B...
CHAIRMAN



Christina B...
MAYOR

APPROVAL BY PAPPILLION CITY PLANNING BOARD

THIS PLAT OF FASE ADDITION WAS APPROVED BY THE PAPPILLION CITY PLANNING BOARD, OF THE CITY OF PAPPILLION, NEBRASKA ON THIS 29 DAY OF July, 1998.

Christina B...
CHAIRMAN



Christina B...
MAYOR

APPROVAL BY PAPPILLION CITY PLANNING BOARD

THIS PLAT OF FASE ADDITION WAS APPROVED BY THE PAPPILLION CITY PLANNING BOARD, OF THE CITY OF PAPPILLION, NEBRASKA ON THIS 29 DAY OF July, 1998.

Christina B...
CHAIRMAN



Christina B...
MAYOR

APPROVAL BY PAPPILLION CITY PLANNING BOARD

THIS PLAT OF FASE ADDITION WAS APPROVED BY THE PAPPILLION CITY PLANNING BOARD, OF THE CITY OF PAPPILLION, NEBRASKA ON THIS 29 DAY OF July, 1998.

Christina B...
CHAIRMAN



Christina B...
MAYOR

APPROVAL BY PAPPILLION CITY PLANNING BOARD

THIS PLAT OF FASE ADDITION WAS APPROVED BY THE PAPPILLION CITY PLANNING BOARD, OF THE CITY OF PAPPILLION, NEBRASKA ON THIS 29 DAY OF July, 1998.

Christina B...
CHAIRMAN



Christina B...
MAYOR

APPROVAL BY PAPPILLION CITY PLANNING BOARD

THIS PLAT OF FASE ADDITION WAS APPROVED BY THE PAPPILLION CITY PLANNING BOARD, OF THE CITY OF PAPPILLION, NEBRASKA ON THIS 29 DAY OF July, 1998.

Christina B...
CHAIRMAN



Christina B...
MAYOR

APPROVAL BY PAPPILLION CITY PLANNING BOARD

THIS PLAT OF FASE ADDITION WAS APPROVED BY THE PAPPILLION CITY PLANNING BOARD, OF THE CITY OF PAPPILLION, NEBRASKA ON THIS 29 DAY OF July, 1998.

Christina B...
CHAIRMAN



Christina B...
MAYOR

APPROVAL BY PAPPILLION CITY PLANNING BOARD

THIS PLAT OF FASE ADDITION WAS APPROVED BY THE PAPPILLION CITY PLANNING BOARD, OF THE CITY OF PAPPILLION, NEBRASKA ON THIS 29 DAY OF July, 1998.

Christina B...
CHAIRMAN



Christina B...
MAYOR

APPROVAL BY PAPPILLION CITY PLANNING BOARD

THIS PLAT OF FASE ADDITION WAS APPROVED BY THE PAPPILLION CITY PLANNING BOARD, OF THE CITY OF PAPPILLION, NEBRASKA ON THIS 29 DAY OF July, 1998.

Christina B...
CHAIRMAN



Christina B...
MAYOR

APPROVAL BY PAPPILLION CITY PLANNING BOARD

THIS PLAT OF FASE ADDITION WAS APPROVED BY THE PAPPILLION CITY PLANNING BOARD, OF THE CITY OF PAPPILLION, NEBRASKA ON THIS 29 DAY OF July, 1998.

Christina B...
CHAIRMAN



Christina B...
MAYOR

APPROVAL BY PAPPILLION CITY PLANNING BOARD

THIS PLAT OF FASE ADDITION WAS APPROVED BY THE PAPPILLION CITY PLANNING BOARD, OF THE CITY OF PAPPILLION, NEBRASKA ON THIS 29 DAY OF July, 1998.

Christina B...
CHAIRMAN



Christina B...
MAYOR

APPROVAL BY PAPPILLION CITY PLANNING BOARD

THIS PLAT OF FASE ADDITION WAS APPROVED BY THE PAPPILLION CITY PLANNING BOARD, OF THE CITY OF PAPPILLION, NEBRASKA ON THIS 29 DAY OF July, 1998.

Christina B...
CHAIRMAN



Christina B...
MAYOR

APPROVAL BY PAPPILLION CITY PLANNING BOARD

THIS PLAT OF FASE ADDITION WAS APPROVED BY THE PAPPILLION CITY PLANNING BOARD, OF THE CITY OF PAPPILLION, NEBRASKA ON THIS 29 DAY OF July, 1998.

Christina B...
CHAIRMAN



Christina B...
MAYOR

APPROVAL BY PAPPILLION CITY PLANNING BOARD

THIS PLAT OF FASE ADDITION WAS APPROVED BY THE PAPPILLION CITY PLANNING BOARD, OF THE CITY OF PAPPILLION, NEBRASKA ON THIS 29 DAY OF July, 1998.

Christina B...
CHAIRMAN



Christina B...
MAYOR

APPROVAL BY PAPPILLION CITY PLANNING BOARD

THIS PLAT OF FASE ADDITION WAS APPROVED BY THE PAPPILLION CITY PLANNING BOARD, OF THE CITY OF PAPPILLION, NEBRASKA ON THIS 29 DAY OF July, 1998.

Christina B...
CHAIRMAN



Christina B...
MAYOR

APPROVAL BY PAPPILLION CITY PLANNING BOARD

THIS PLAT OF FASE ADDITION WAS APPROVED BY THE PAPPILLION CITY PLANNING BOARD, OF THE CITY OF P