

CERTIFICATE

Pursuant to Section 31-727.01 of the Revised Statutes of Nebraska, 1943, as amended, I, the undersigned Clerk of Sanitary and Improvement District No. 158, of Sarpy County, Nebraska ("SID No. 158), hereby certify to the following:

1. The number of this Sanitary and Improvement District is No. 158.

2. A copy of the outer boundaries of SID No. 158 is attached hereto as Exhibit "A", and incorporated herein by reference.

3. The purposes of SID No. 158 shall be to acquire, install, repair, maintain, renew and replace a sanitary and storm sewer system, a water system, a civil defense warning system, a system of sidewalks, public roads, streets, and highways, public waterways, docks or wharfs, and all appurtenances related to the foregoing; to contract for water for fire protection and for resale to residents of SID No. 158, to contract for police protection and security services, and to contract for gas and for electricity for street lighting for the public streets and highways within SID No. 158, to construct electric service lines and conduits, and gas mains, or to contract for the construction of dikes and levees for flood protection for SID No. 158; where permitted by law, to contract with other sanitary and improvement districts to acquire, build and improve and operate public parks, playgrounds, and recreational facilities for the joint use of the residents of the contracting districts; where permitted by law to enter into Interlocal Cooperation Agreements with other governmental authorities and subdivisions and to acquire, improve and operate public parks, playgrounds and recreational facilities. In lieu of establishing its own water system, SID No. 158 may contract with any utilities district, municipality or corporation for the installation of a water system and to provide water service for fire protection and for the use of residents of SID No. 158.

4. SID No. 158 has the power to levy an unlimited property tax to pay the debt and its expenses of operation and maintenance.

5. SID No. 158 is required to levy special assessments on the property in SID No. 158 to the full extent of special benefits arising by reason of improvements installed by SID No. 158.

6. The annual budget of SID No. 158 has been filed with the Sarpy County Clerk, which budget shows the anticipated revenue and expenses, tax levy, and indebtedness of the district.

92-26134A

7. The current tax levy of SID No. 158 may be obtained from the Sarpy County Clerk.

8. A copy of the annual financial audit of SID No. 158 is on file with the Clerk of the District and the Auditor of Public Accounts.

IN WITNESS WHEREOF, I have hereto set my hand in behalf of SID No. 158 this 7th day of October, 1992.

J D Walsh
CLERK

STATE OF NEBRASKA)
)ss.
COUNTY OF DOUGLAS)

On this 7th day of October, 1992, before me, the undersigned Notary Public duly commissioned and qualified in and for said County, personally came A. D. WALSH, Clerk of SID No. 158, to me personally known to be the Clerk and identical person who signed the foregoing instrument and acknowledged the execution thereof to be his voluntary act and deed.

WITNESS my hand and notarial seal the day and year last above written.

GENERAL NOTARY-State of Nebraska
BARBARA M. HAMMOND
My Comm. Exp. April 11, 1996

Barbara M Hammond
NOTARY PUBLIC

Proof	<u>W</u>
D.E.	<u>W</u>
Verify	<u>W</u>
Filmed	
Checked	
Fee \$	<u>216.00</u>

Filed For Record 11-24-92 at 3:15 P.M.
Instrument # 92-026134
Carol A. Gavin Register of Deed Sarpy Cty NE

92-26134B

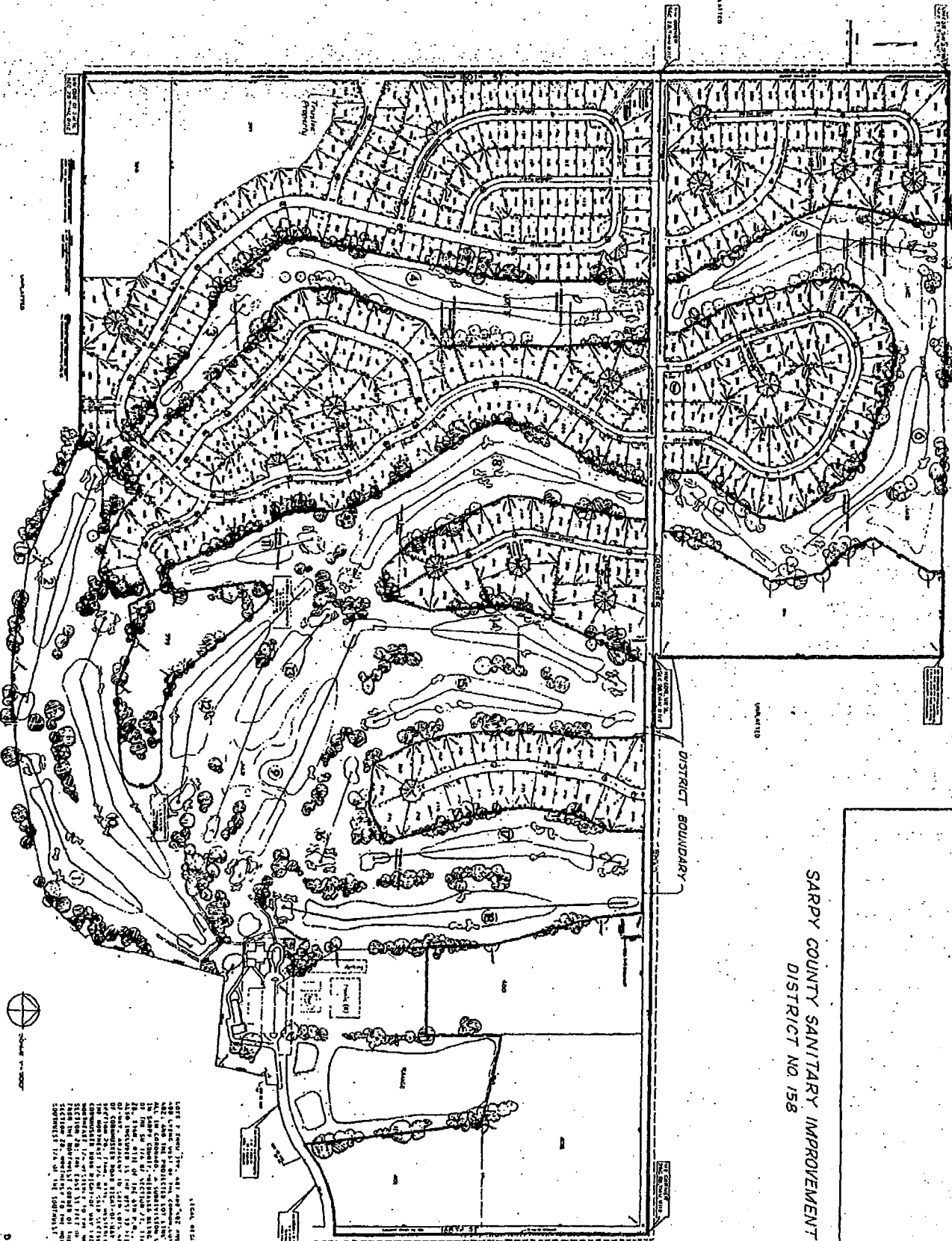


EXHIBIT "A"

SARYPY COUNTY SANITARY IMPROVEMENT
DISTRICT NO. 158

1. The plan shows the location of the sanitary structures to be installed in the district. The structures are shown in the form of circles with a cross inside. The circles are arranged in a grid pattern, with the spacing between them varying according to the terrain. The plan also shows the location of the manholes and catch basins, which are shown in the form of squares with a cross inside. The manholes and catch basins are arranged in a grid pattern, with the spacing between them varying according to the terrain. The plan also shows the location of the sanitary structures to be installed in the district. The structures are shown in the form of circles with a cross inside. The circles are arranged in a grid pattern, with the spacing between them varying according to the terrain. The plan also shows the location of the manholes and catch basins, which are shown in the form of squares with a cross inside. The manholes and catch basins are arranged in a grid pattern, with the spacing between them varying according to the terrain.

DESIGN ENGINEERS & ASSOC.
16302 SO. 164th ST. OMAHA, NE.