

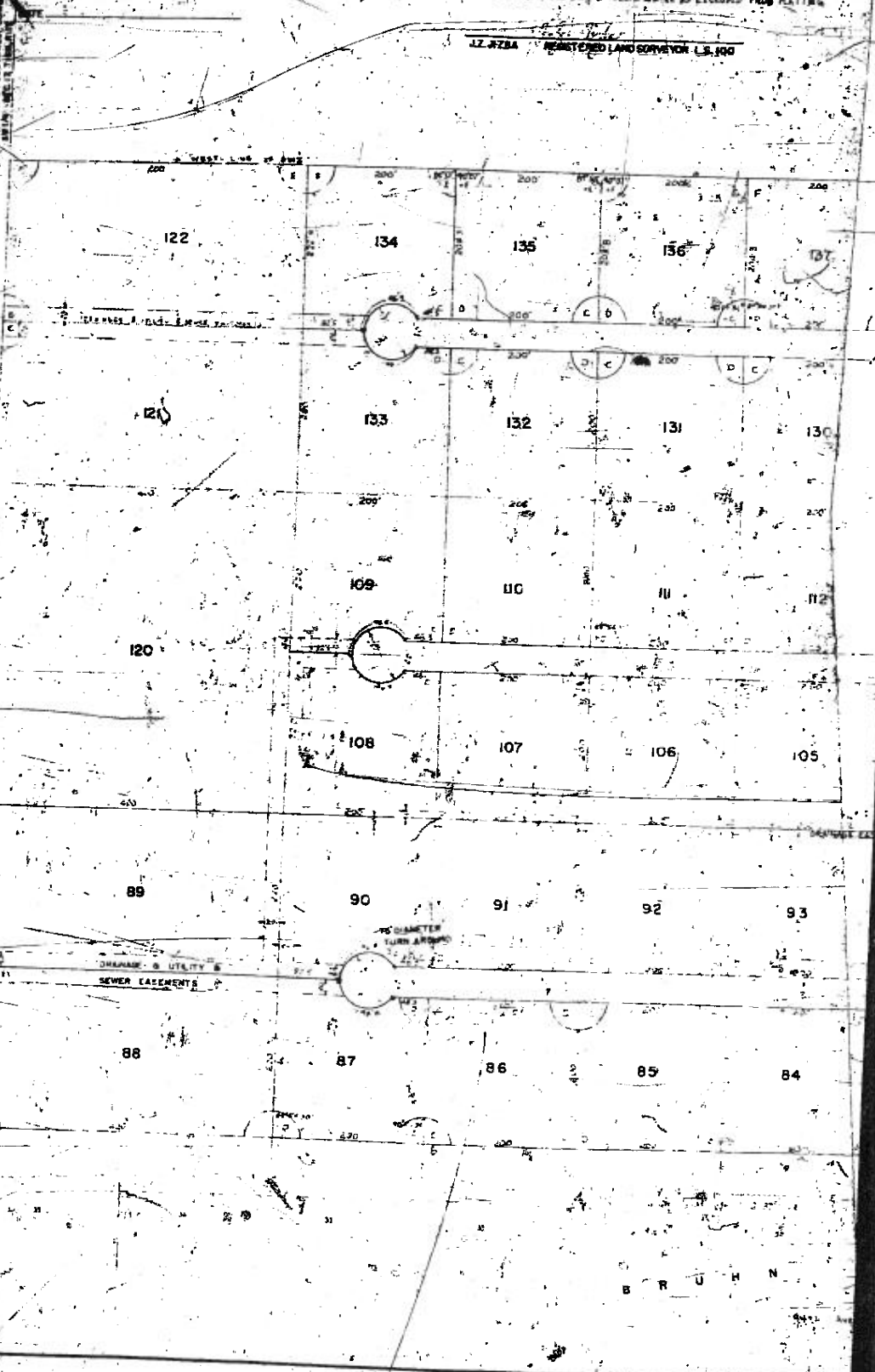
# FAWN HEIGHTS

## THE SURVEYOR'S CERTIFICATE

I HEREBY CERTIFY THAT I HAVE ACCURATELY SURVEYED AND STAKED WITH IRON PIPE CORNERS OF LOTS, ROAD ANGLE POINTS AND ENDS OF CURVES AS SHOWN ON THIS PLAN OF FAWN HEIGHTS ON WEST MILITARY LOTS 78 TO 84 INCLUSIVE IN THE SW 1/4 OF SECTION 17, T. 14 N. R. 10 E. OF 6TH P.M. THAT SAID SUBDIVISION OF FAWN HEIGHTS ON WEST MILITARY LOTS IS ALSO DESCRIBED AS BEGINNING AT A POINT 150.0 FEET WEST ALONG THE SOUTH LINE OF THE SW 1/4 OF THE SOUTHEAST CORNER OF THE SW 1/4 OF SECTION 17, T. 14 N. R. 10 E. OF 6TH P.M. THENCE 130.0 FEET WEST TO THE SW CORNER OF SECTION 17 THENCE 230.0 FEET NORTH ALONG THE WEST LINE OF SECTION 17 TO A POINT ON THE SOUTH RIGHT-OF-WAY LINE 130.0 FEET WEST FROM THE CENTER LINE OF PAVING MEASURED AT RIGHT ANGLES THENCE SOUTHWESTERSLY 180.0 FEET ALONG THE SOUTH 45° NORTH-OF-WAY LINE OF WEST MILITARY TO THE NORTHWEST CORNER OF LOT 84 BRAN ACRES ON WEST MILITARY THENCE 219.9 FEET SOUTH TO THE POINT OF BEGINNING WHERE AN INTERIOR ANGLE OF 89° 54' 30" IS FORMED WITH THE SOUTH SECTION LINE TO THE WEST, EXCEPT THAT ANY PORTION LAYING IN THE SW 1/4 OF SECTION 17 IS EXCLUDED FROM PLATTING.

LZ 4728A REGISTERED LAND SURVEYOR L.S. 100

COUNTY ROAD 13  
METAL PIPE CORNER AT CORNER FROM SECTION 17



# EIGHTS ON WEST MILITARY LOTS 79 TO 144

## DEDICATION

KNOW ALL MEN BY THESE PRESENTS THAT WE, BRUNN DEVELOPMENT CO., INC., A NEBRASKA CORPORATION, EARL BRUNN, JR., PRESIDENT, AND ROBERT BRUNN, SECRETARY, PROPRIETORS OF THE LAND DESCRIBED IN THE SURVEYOR'S CERTIFICATE AND EMBRACED WITHIN THIS PLAT HAVE CAUSED THE SAME TO BE SUBDIVIDED INTO LOTS AND STREETS, SAID SUBDIVISION TO BE HEREAFTER KNOWN AS PAVEN HEIGHTS ON WEST MILITARY, LOTS 79 TO 144 THE LOTS NUMBERED AS SHOWN AND WE HEREBY RATIFY AND APPROVE THE DISPOSITION OF OUR PROPERTY AS SHOWN ON THIS PLAT, AND HEREBY DEDICATE FOR PUBLIC USE, THE ROADS, CUL-DE-SAC, DRAINAGE UTILITIES AND SEWER EASEMENTS, AS SHOWN HEREIN, AND STANDARD POWER POLE AND TELEPHONE EASEMENTS ON ALL REAR AND SIDE LOT LINES, CONFORMING TO REQUIREMENTS BY O.P.P.C.

IN WITNESS WHEREOF WE DO HEREUNTO SET OUR HANDS THIS 23 DAY OF APRIL A.D. 1962

BRUNN DEVELOPMENT CO., INC.

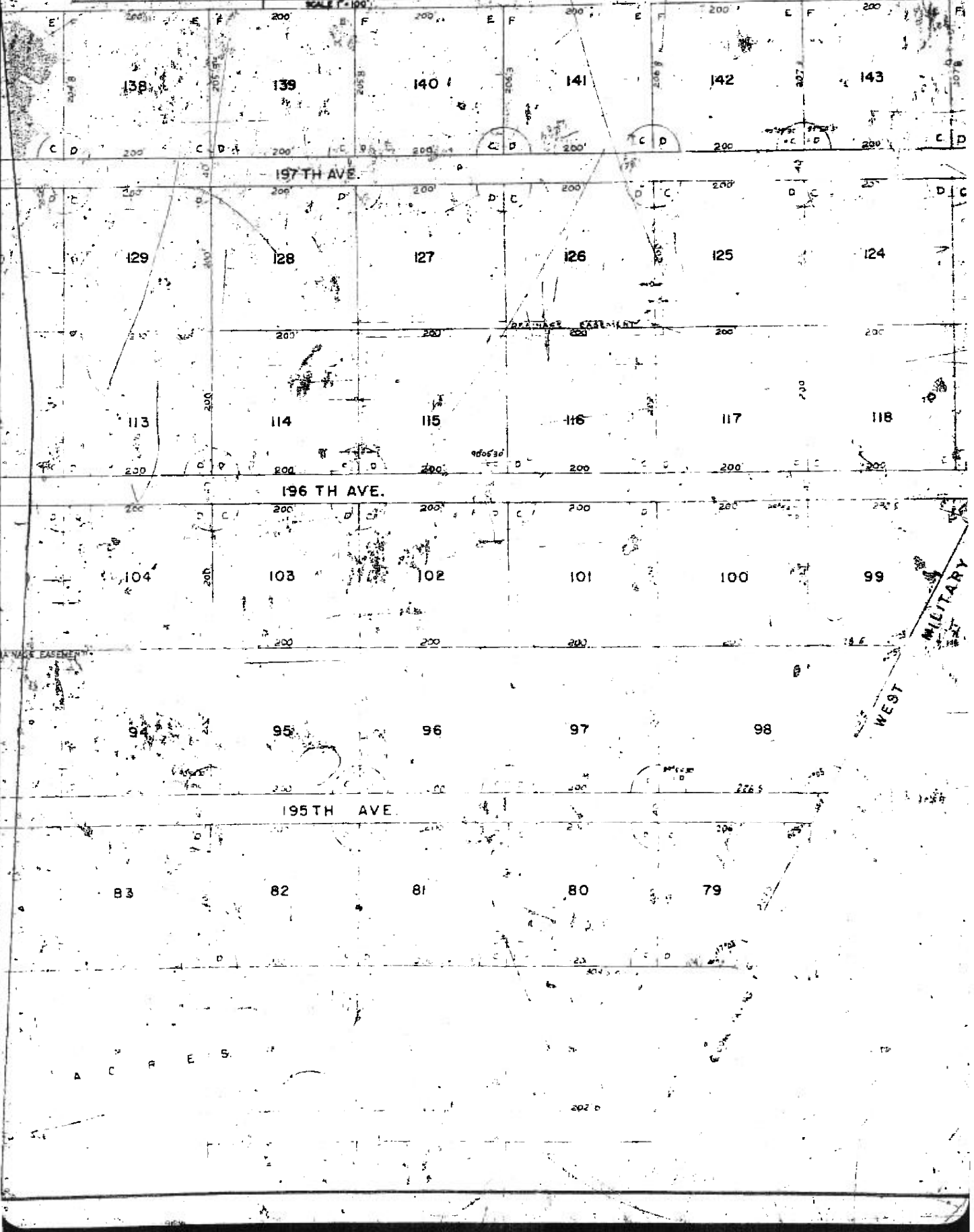
BY *Earl Brunn*  
PRESIDENT

BY *Robert Brunn*  
SECRETARY

SEAL

NORTH

SCALE 1" = 100'

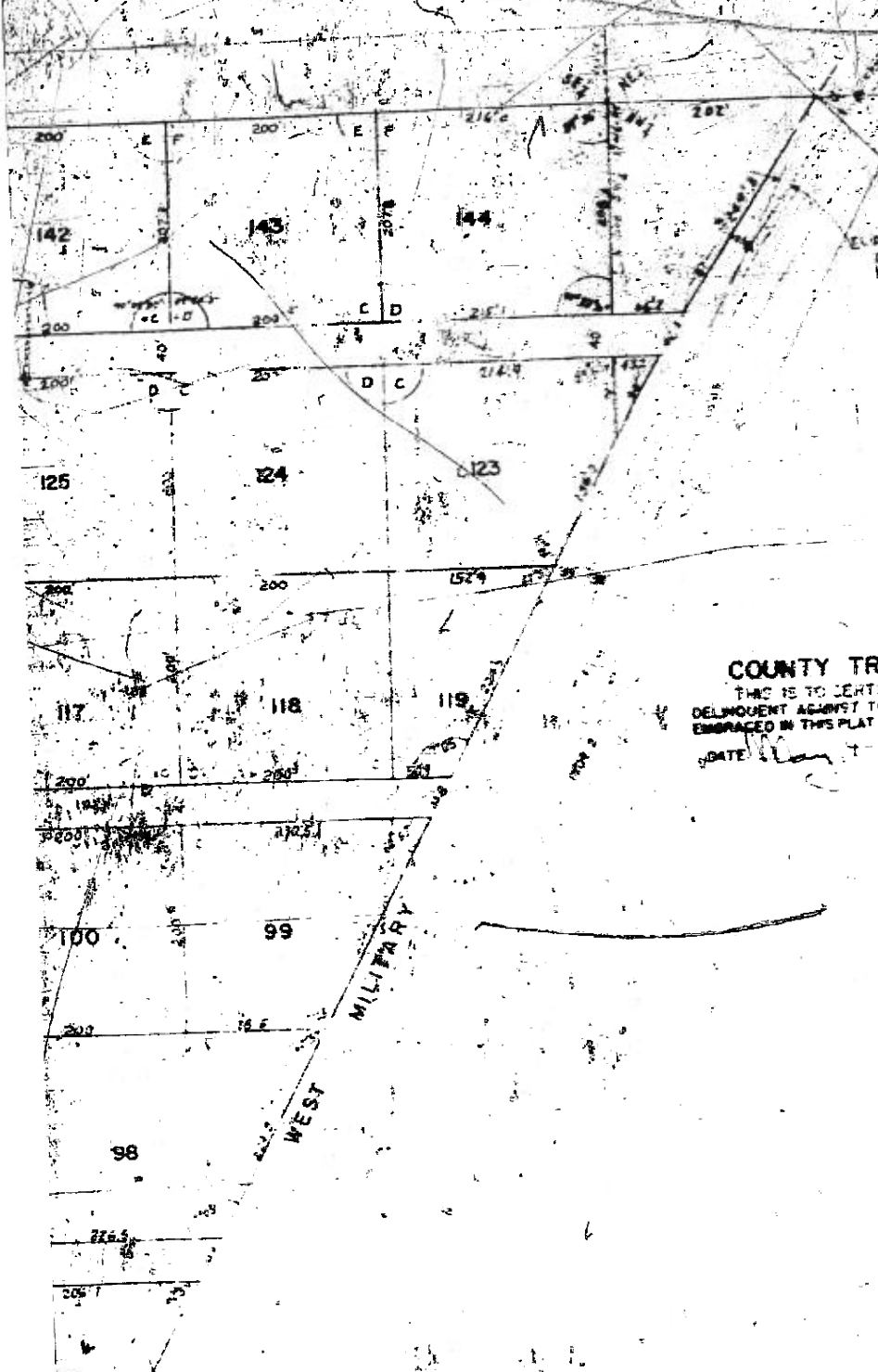


ACKNOWLEDGEMENT OF NOTARY

ON THIS 23rd DAY OF MAY, 1968, I, CAROL BUCHA, A PUBLICLY COMMISSIONED AND QUALIFIED NOTARY PUBLIC FOR SAID COUNTY OF SAID STATE, AND PERSONALLY KNOWN TO ME TO BE THE PRESIDENT AND SOLE DEVELOPER OF SAID COMPANY, AND THE SEVERAL PERSONS WHO HAVE AFFIRMED THEIR NAMES TO THE SURVEYOR ON THIS PLAT AS DEVELOPERS OF SAID COMPANY, AND THE OWNERS OF THE PROPERTY DESCRIBED IN THE SURVEYOR'S CERTIFICATE ON THIS PLAT CONCERNING THEIR RIGHTS ON WEST MILITARY LOT 79 TO 144 AND THAT THEY HAVE ACKNOWLEDGED THE BOUNDARIES OF SAID COMPANY AND THEIR VOLUNTARY ACT AND DEED AND THE VOLUNTARY ACT AND DEED OF SAID CORPORATION, WITNESS MY HAND AND SEAL THE SAID DAY LAST ABOVE WRITTEN.

Carol Bucha  
NOTARY PUBLIC

MY COMMISSION EXPIRES THE 15th DAY OF DECEMBER, 1968.



COUNTY TREASURER'S CERTIFICATE

THIS IS TO CERTIFY THAT I FIND NO DELINQUENCY OF SPECIAL TAXES, LINE OR DELINQUENCY AGAINST THE PROPERTY DESCRIBED IN THE SURVEYOR'S CERTIFICATE AND ENBRACED IN THIS PLAT AS SHOWN BY THE RECORDS OF THIS OFFICE.

DATE May 7, 1968

Carol Bucha  
COUNTY TREASURER

PLAT NO. 1148  
SHEET NO. 289

FAWN HEIGHTS ON WEST MILITARY		LOTS 79 TO 144	SHEET
J. ZIZBA, ARCHITECT & CIVIL ENGINEER		SCALE 1"=100'	DATE
JIZBA & JIZBA CONSULTING CIVIL ENGINEERS OMAHA, NEBRASKA			FEB 68

8. ENTERED IN NUMERICAL INDEX AND RECORDED IN THE OFFICE OF DEPT. OF REVENUE... 23.25