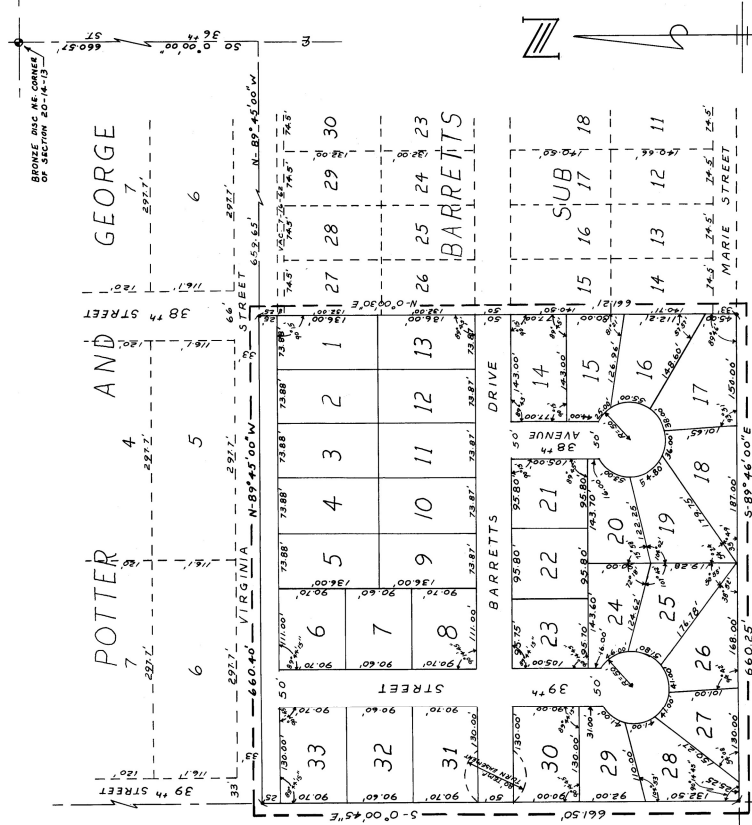


EVENING VUE

A SUBDIVISION IN THE SW 1/4 NE 1/4, SEC. 50, T-14N, R-13-E OF THE 6TH PM, SARY COUNTY, NEBRASKA (LOTS 1 THRU 33 INCLUSIVE)



SCALE: 1" = 100'

UNPLATTED

SURVEYS CERTIFICATE

I hereby certify that I have accurately surveyed and staked with iron pins all corners of all lots, streets, avenues and angle points in this platting known as Evening-Vue Addition (lots 1 through 33 inclusive) in the SW 1/4 NE 1/4, Sec. 50, T-14N, R-13-E of the 6th PM, Principal Meridian, Sary County, Nebraska, more particularly described as follows:

Referring to the NE corner of said Section 20, thence 0°00'00" (bearing assumed) along the East line of said Section 20, a distance of 661.50 feet, thence 90°00'00" West a distance of 660.40 feet, thence South 0°00'00" East a distance of 661.50 feet, thence South 89°45'00" East a distance of 660.40 feet, thence North 0°00'00" East a distance of 661.21 feet to the point of beginning.

Date: August 18, 1962 Registered Surveyor Nebraska LS 179

APPROVAL OF COUNTY SURVEYOR

I hereby approve of this plot of Evening-Vue Addition (lots 1 through 33 inclusive) on this 18 day of Aug, A.D., 1962.

J. W. Valt
County Surveyor

APPROVAL OF SARY COUNTY BOARD OF COMMISSIONERS

This subdivision of Evening-Vue was approved and accepted by the Sary County Board of Commissioners on this 7 day of Sept, A.D., 1962.

Harold H. Janssen
Chairman, Sary County Board of Commissioners

SARY COUNTY PLANNING COMMISSION

This subdivision of Evening-Vue was approved and accepted by the Sary County Planning Commission on this 8 day of Sept, A.D., 1962.

Richard A. Jansen
Chairman, Sary County Planning Commission

COUNTY TREASURERS CERTIFICATE

I hereby certify that the records of my office show no taxes due or delinquent upon the property described in the surveyors certificate and embrace in this plat as of this 18 day of Aug, A.D., 1962.

Robert W. Ely
Sary County Treasurer

DEDICATION

Know all men by these presents: that we, Richard A. Jansen and Paul F. Jansen, being the sole owners and proprietors of the land described in the surveyors certificate and embrace within this plat, have dedicated the same to the public use of the County of Sary, Nebraska, and we hereby ratify and approve of the disposition of our property as shown on this plat, and further hereby dedicate to the public for public use the streets shown herein and also dedicate an easement to construct and maintain telephones and electric utilities along the above or foregoing subdivision of the SE 1/4 of the NE 1/4 of Section 20, T-14-N, R-13-E as appears on this plat. In witness whereof, we do hereunto set our hands this 10 day of August, A.D., 1962.

Richard A. Jansen
Paul F. Jansen

ACKNOWLEDGMENT OF NOTARY

STATE OF NEBRASKA)
COUNTY OF SARY)

On this 17th day of Aug, A.D., 1962, before me a Notary Public, duly commissioned and qualified in and for said county, personally came Richard A. Jansen and Paul F. Jansen, who are personally known to be the identical persons whose names are affixed to the dedication of this plat and they acknowledged the execution thereof to be their voluntary act and deed.

Witness my hand and notarial seal at Papillion, Nebraska, in Sary county, the date last aforesaid.

My commission expires on the 9th day of May, A.D., 1967.
J. W. Valt
Notary Public
Harold H. Jansen
Sary County Building Inspector 9-11-62

Filed 9-11-62