

Show only on lots 1 → 6,

38 → 42 and 102

as shown on Plat

No other lot should have to be crossed to obtain access to the Pipeline

Plat

Spence Title Services, Inc.  
Downtown: 345-8844 Miracle Hills: 498-8446

Edge Water on The Park

- TA 48237 L+72
- TA 48081 L+21
- TA 48570 L+69
- TA 49933 L+52
- TA-48986 L+95
- TA-50611 L+47
- TA-50392 L+47
- TA 50757 L+23
- TA 51344 L+3
- TA 51666 L+91
- TA 53239 L+8
- 12-115412 L+85
- 12-116201 L+37
- 1142500 L+63
- 114932-15 L+66

Edgewater on the lake

SW 1/4 SW 1/4 34-14-12

15-38

Case

03-20867

NO

03-20868

TRD

03-20873

TRD

03-24934

NO

Invites paid - 7-38

03-25609

SID

03-25867

CON

03-36980

PLAT

03-17412

MOGA

15-38

03-68010

MOGA

15-38

04-09212

RCD

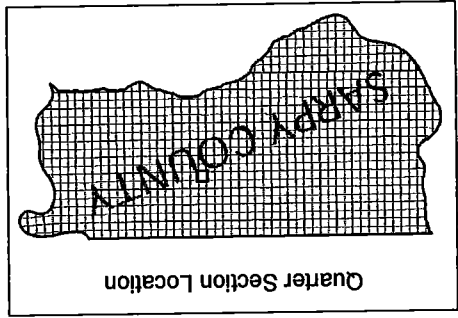
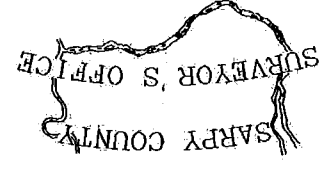
Invites paid back to Edgewater

8-2

7-30-04/15

Inst#/Grantor	Type	Filed Date	NE	NW	SW	SE	Lots/Remarks
2002-03177	DOT	01/24/2002	* * * *	* P P *	X X X X	* * * *	
NORTHERN NATURAL GAS CO							SEE INST FOR BOOK & PAGES/ CORR TO DELETE LTS 1 THRU 46 LTS 48 THRU 76 LTS 79 THRU 138 LTS 1
2002-41223	DOR	10/18/2002	* * * *	* P P *	X X X X	* * * *	OF 2002-03177
GRIFFITHS WALTER J JR							TL 13A
2003-20867	WD	04/18/2003	* * * *	* * * *	* * X P	* * * *	SEE INST FOR EXC & FOR 1/9 & 1/3 INTEREST
PETERSEN ERIC ALLAN ETAL							TL 13A
2003-20868	TRD	04/18/2003	* * * *	* * * *	* * X P	* * * *	SEE INST FOR EXC & 1/3 INT CORR TO SHOW TRUS
HOHENBERGER REVOCABLE TRUST ETAL							T AS GRANTOR 3-31-04KJ
2003-20869	DOT	04/18/2003	* * * *	* * * *	* * X *	* * * *	PT TL 13A
EDGEWATER ON THE PARK LLC							
2003-20870	WOC	04/18/2003	* * * *	* * * *	* * X *	* * * *	PT TL 13A
EDGEWATER ON THE PARK LLC							DURATION 12 MONTHS
2003-20873	TRD	04/18/2003	* * * *	* * * *	* * P *	* * * *	TL 14
HOHENBERGER REVOCABLE TRUST ETAL							SEE INST FOR EXC & 1/3 INT CORR TO SHOW TRU
2003-21090	DOT	04/21/2003	* * * *	* * * *	* * X *	* * * *	ST AS GRANTOR 4-1-04KJ
EDGEWATER ON THE PARK LLC							PT TL 13A
2003-24934	WD	05/08/2003	* * * *	* * * *	* * P *	* * * *	PT TL 13A
EDGEWATER ON THE PARK LLC							
2003-25609	SID	05/12/2003	* * * *	* * * *	* * P *	* * * *	TL 13A
SID #244							FORMATION SID #244
2003-25867	CON	05/13/2003	* * * *	* * * *	* * P *	* * * *	TP TXLT 13A
BANK OF NEBRASKA							REPLAT SW 1/4 34-14-12 NKA LTS 1 - 102 & OLA 0
2003-36980	PLAT	07/07/2003	* * * *	* * * *	* * P *	* * * *	LB OLC EDGEWATER ON THE PARK
EDGEWATER ESTATES LLC							PTTL 13A
2003-53341	DOR	09/18/2003	* * * *	* * * *	* * P *	* * * *	2003-20869
BANK OF NEBRASKA TR							PT TL 13A
2003-53342	DOR	09/18/2003	* * * *	* * * *	* * P *	* * * *	2003-21090
BANK OF NEBRASKA TR							
2003-67412	MODA	11/13/2003	* * * *	* * * *	* * P P	* * * *	CORR TO ADD MISC 15-38 PIPELINE EASE
NORTHERN NATURAL GAS CO							15-38
2003-68010	MODA	11/14/2003	* * * *	* * * *	* * P X	* * * *	PT TL 13A
NORTHERN NATURAL GAS CO							UNDIV 1/5 INT
2004-09212	QCD	03/17/2004	* * * *	* * * *	* * P *	* * * *	
FALCONE TOM ETAL							



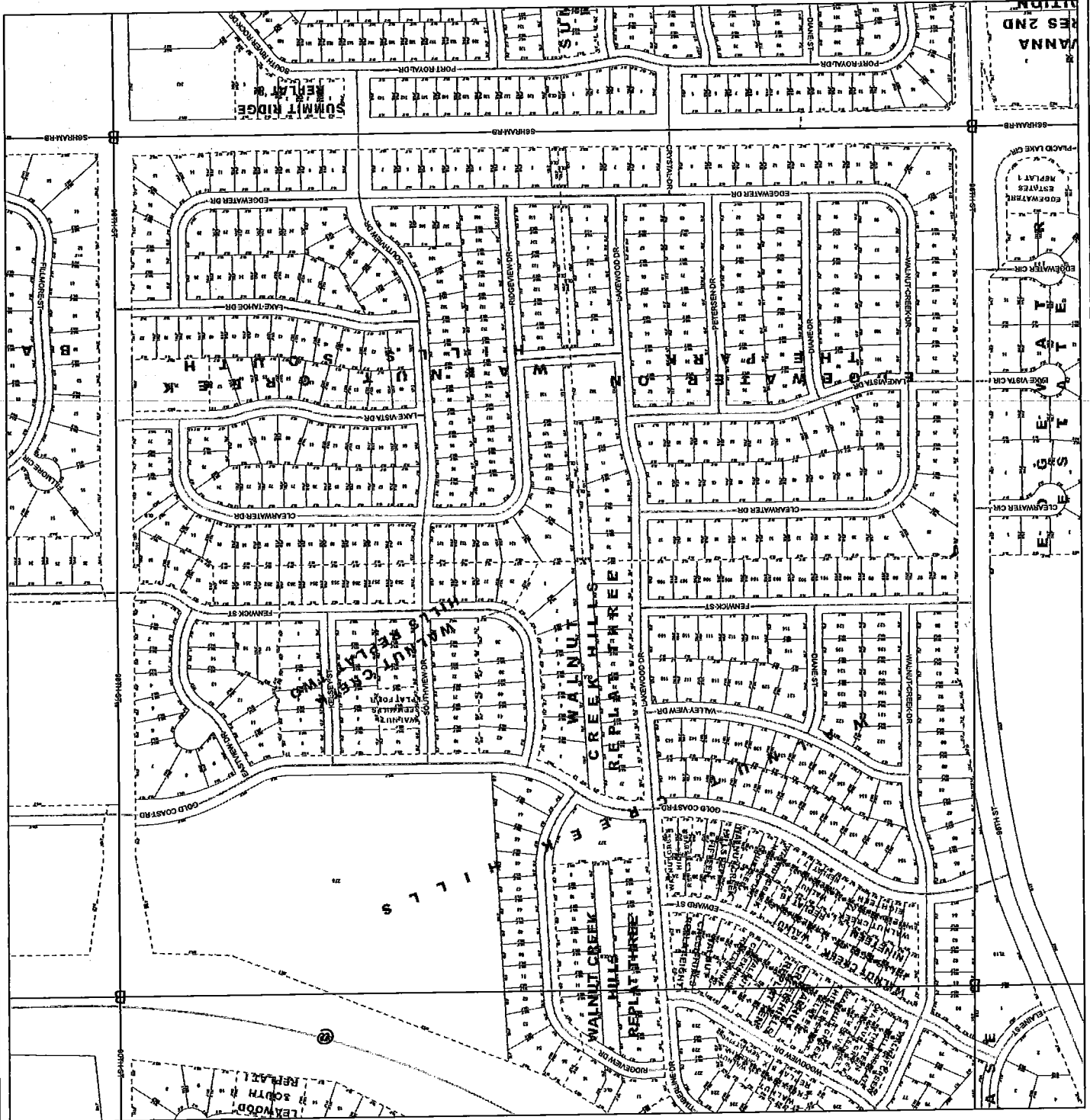


This Map Was Printed On:  
8/28/2007

This map constitutes a representation based on information provided to the Sarpay County Surveyors Office by other individuals and organizations. Therefore no representations regarding the accuracy of the size, dimensions, measurements, condition, platting, or location of the within described area are made. Should such information be required for construction, zoning, or other purposes, the services of a private surveyor and/or title search should be secured.

- Legend**
- Lots
  - Quarter Sections
  - Subdivisions
  - Blocks
  - Railroads
  - Street Centerline
  - B Corners

**NOTICE**



1 inch equals 200 feet

**SW1/4 SEC 34 T14N R12E**