

Dan *Waltz*  
 REGISTER OF DEEDS  
 2000 JUN 26 P 3:20  
 LANCASTER COUNTY, NE

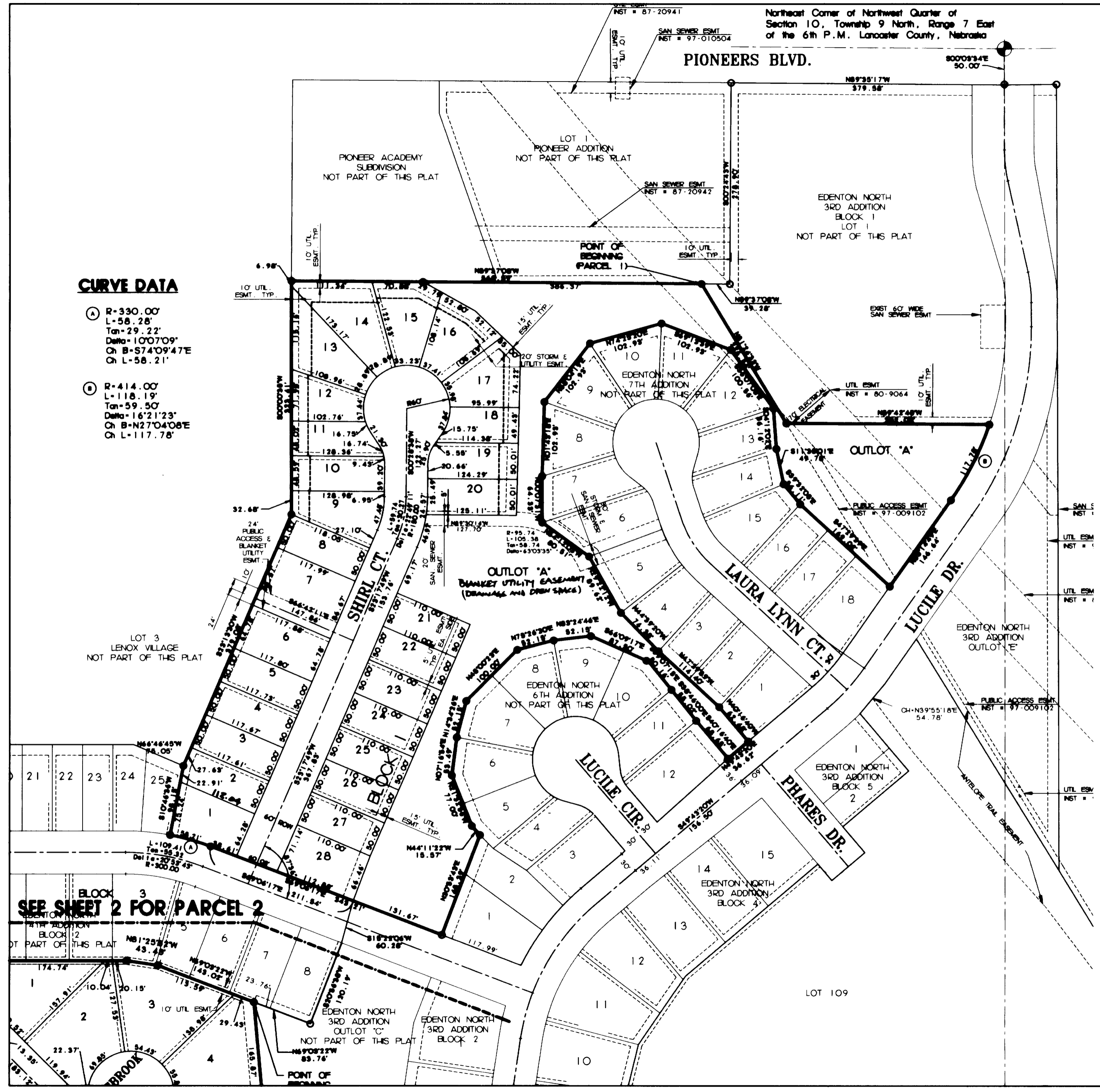
\$91.50  
 INST. NO 2000  
 027170  
 #3494

BLOCK  
 CODE  
 EDN05  
 CHECKED  
 ENTERED  
 EDITED

# EDENTON NORTH 5TH ADDITION FINAL PLAT

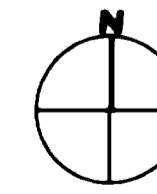
### CURVE DATA

- A R=330.00'  
 L=58.28'  
 Tan=29.22'  
 Delta=10°07'09"  
 Ch B=S74°09'47"E  
 Ch L=58.21'
- B R=414.00'  
 L=118.19'  
 Tan=59.50'  
 Delta=16°21'23"  
 Ch B=N27°04'08"E  
 Ch L=117.78'



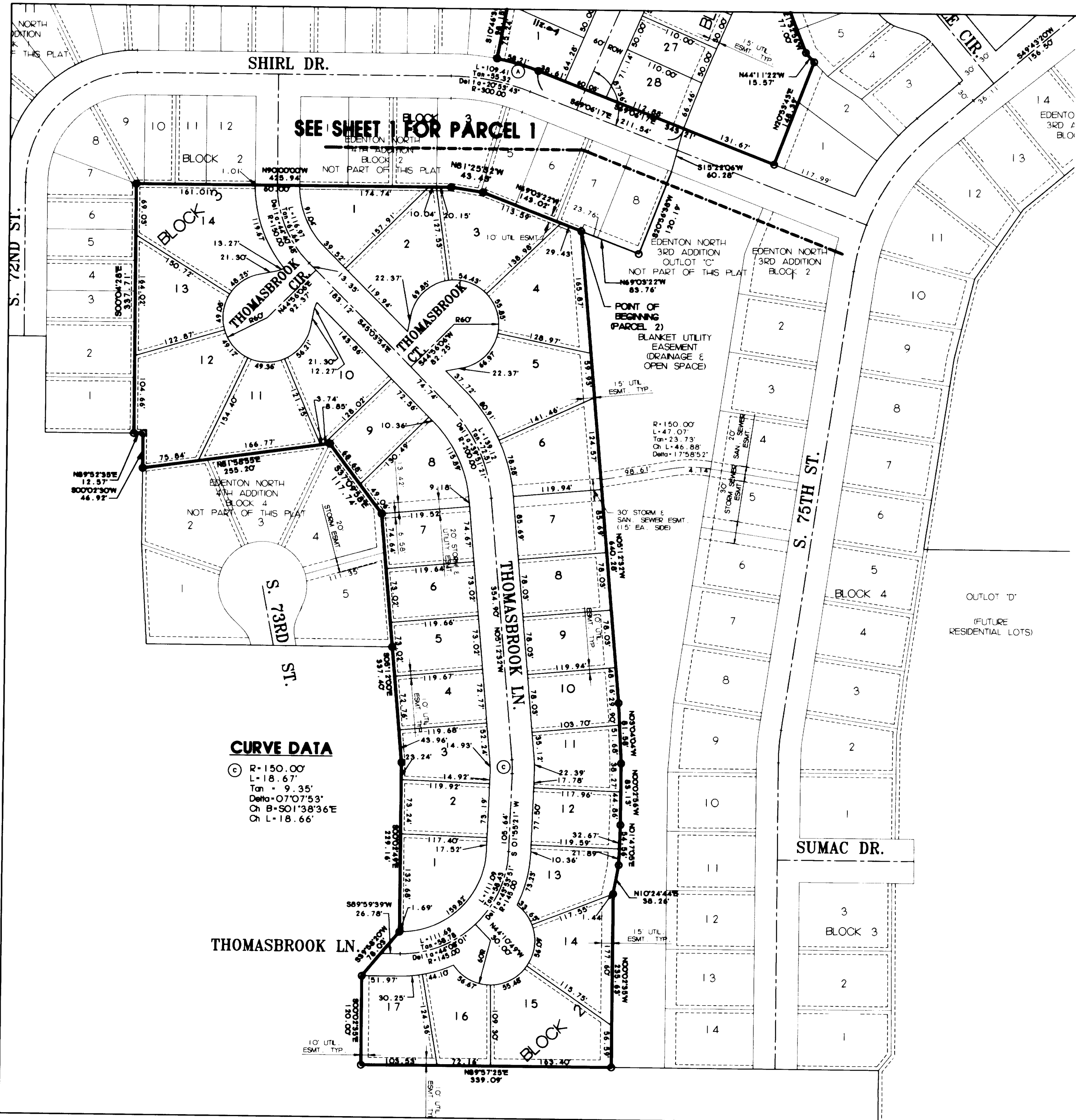
### LEGEND

- SECTION CORNER
- CORNER FOUND
- CORNER SET - 5/8" REBAR
- R - RECORDED DISTANCE
- M - MEASURED DISTANCE
- P - PLAT DISTANCE



**EDENTON NORTH 5TH ADDITION**  
 SCALE 1"=100'

SEE SHEET 2 FOR PARCEL 2



SEE SHEET 1 FOR PARCEL 1

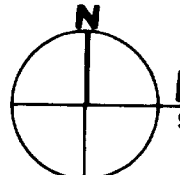
**CURVE DATA**

- ⊙ R=150.00'
- L=18.67'
- Tan = 9.35'
- Delta = 07°07'53"
- Ch B=501'38"36"
- Ch L=18.66'

# EDENTON NORTH 5TH ADDITION FINAL PLAT

**LEGEND**

- ⊙ SECTION CORNER
- CORNER FOUND
- CORNER SET - 5/8" REBAR
- R = RECORDED DISTANCE
- M = MEASURED DISTANCE
- P = PLAT DISTANCE



**EDENTON NORTH 5TH ADDITION**  
SCALE 1"=100'

# EDENTON NORTH 5TH ADDITION FINAL PLAT

## CERTIFICATE OF SURVEYOR

I HEREBY CERTIFY THAT I HAVE CAUSED TO BE SURVEYED THE SUBDIVISION TO BE KNOWN AS EDENTON NORTH 5TH ADDITION, A SUBDIVISION OF OUTLOTS 'A' AND 'B', EDENTON NORTH 4TH ADDITION, AND OUTLOT 'A', EDENTON NORTH 7TH ADDITION, LOCATED IN SECTION 10, TOWNSHIP 9 NORTH, RANGE 7 EAST OF THE 6TH P.M., CITY OF LINCOLN, LANCASTER COUNTY, NEBRASKA AND MORE PARTICULARLY DESCRIBED AS FOLLOWS:

### PARCEL 1

REFERRING TO THE NORTHEAST CORNER OF THE NORTHWEST QUARTER OF SAID SECTION 10, THENCE IN A SOUTHERLY DIRECTION, ALONG THE EAST LINE OF THE NORTHWEST QUARTER OF SAID SECTION 10, ON AN ASSUMED BEARING OF SOUTH 00 DEGREES 03 MINUTES 34 SECONDS EAST FOR A DISTANCE OF 50.00 FEET  
 THENCE NORTH 89 DEGREES 35 MINUTES 17 SECONDS WEST FOR A DISTANCE OF 379.58 FEET  
 THENCE SOUTH 00 DEGREES 24 MINUTES 43 SECONDS WEST FOR A DISTANCE OF 278.90 FEET  
 THENCE NORTH 89 DEGREES 37 MINUTES 08 SECONDS WEST FOR A DISTANCE OF 323.41 FEET  
 THENCE SOUTH 10 DEGREES 46 MINUTES 36 SECONDS WEST FOR A DISTANCE OF 98.15 FEET TO THE POINT OF BEGINNING

THENCE CONTINUING NORTH 89 DEGREES 37 MINUTES 08 SECONDS WEST FOR A DISTANCE OF 568.59 FEET  
 THENCE SOUTH 00 DEGREES 00 MINUTES 35 SECONDS WEST FOR A DISTANCE OF 323.41 FEET  
 THENCE SOUTH 23 DEGREES 13 MINUTES 30 SECONDS WEST FOR A DISTANCE OF 379.08 FEET  
 THENCE SOUTH 10 DEGREES 46 MINUTES 36 SECONDS WEST FOR A DISTANCE OF 98.15 FEET

THENCE ON A CURVE TO THE RIGHT WITH A DELTA ANGLE OF 10 DEGREES 07 MINUTES 09 SECONDS, A RADIUS OF 330.00 FEET, A CHORD BEARING OF SOUTH 74 DEGREES 09 MINUTES 47 SECONDS EAST, A CHORD LENGTH OF 58.21 FEET, FOR AN ARC DISTANCE OF 58.28 FEET TO A POINT OF TANGENCY

THENCE SOUTH 69 DEGREES 06 MINUTES 17 SECONDS EAST FOR A DISTANCE OF 343.21 FEET  
 THENCE NORTH 20 DEGREES 53 MINUTES 43 SECONDS EAST FOR A DISTANCE OF 148.39 FEET  
 THENCE NORTH 44 DEGREES 11 MINUTES 22 SECONDS WEST FOR A DISTANCE OF 15.57 FEET  
 THENCE NORTH 21 DEGREES 32 MINUTES 56 SECONDS WEST FOR A DISTANCE OF 77.00 FEET  
 THENCE NORTH 07 DEGREES 16 MINUTES 54 SECONDS EAST FOR A DISTANCE OF 53.49 FEET  
 THENCE NORTH 14 DEGREES 34 MINUTES 26 SECONDS EAST FOR A DISTANCE OF 52.15 FEET  
 THENCE NORTH 45 DEGREES 00 MINUTES 23 SECONDS EAST FOR A DISTANCE OF 100.00 FEET  
 THENCE NORTH 75 DEGREES 26 MINUTES 20 SECONDS EAST FOR A DISTANCE OF 52.15 FEET  
 THENCE NORTH 83 DEGREES 24 MINUTES 46 SECONDS EAST FOR A DISTANCE OF 52.15 FEET  
 THENCE SOUTH 66 DEGREES 09 MINUTES 17 SECONDS EAST FOR A DISTANCE OF 87.50 FEET  
 THENCE SOUTH 39 DEGREES 07 MINUTES 15 SECONDS EAST FOR A DISTANCE OF 50.16 FEET  
 THENCE SOUTH 38 DEGREES 46 MINUTES 00 SECONDS EAST FOR A DISTANCE OF 55.02 FEET  
 THENCE SOUTH 40 DEGREES 16 MINUTES 40 SECONDS EAST FOR A DISTANCE OF 68.65 FEET  
 THENCE NORTH 49 DEGREES 43 MINUTES 20 SECONDS EAST FOR A DISTANCE OF 36.62 FEET  
 THENCE NORTH 40 DEGREES 16 MINUTES 40 SECONDS WEST FOR A DISTANCE OF 62.48 FEET  
 THENCE NORTH 47 DEGREES 29 MINUTES 39 SECONDS WEST FOR A DISTANCE OF 114.40 FEET  
 THENCE NORTH 44 DEGREES 39 MINUTES 20 SECONDS WEST FOR A DISTANCE OF 74.38 FEET  
 THENCE NORTH 29 DEGREES 22 MINUTES 12 SECONDS WEST FOR A DISTANCE OF 89.62 FEET  
 THENCE NORTH 54 DEGREES 12 MINUTES 03 SECONDS WEST FOR A DISTANCE OF 80.51 FEET  
 THENCE NORTH 00 DEGREES 07 MINUTES 31 SECONDS WEST FOR A DISTANCE OF 64.33 FEET  
 THENCE NORTH 01 DEGREES 43 MINUTES 18 SECONDS EAST FOR A DISTANCE OF 102.93 FEET  
 THENCE NORTH 38 DEGREES 04 MINUTES 19 SECONDS EAST FOR A DISTANCE OF 102.93 FEET  
 THENCE NORTH 74 DEGREES 25 MINUTES 20 SECONDS EAST FOR A DISTANCE OF 102.93 FEET  
 THENCE SOUTH 69 DEGREES 13 MINUTES 39 SECONDS EAST FOR A DISTANCE OF 102.93 FEET  
 THENCE SOUTH 36 DEGREES 07 MINUTES 05 SECONDS EAST FOR A DISTANCE OF 100.56 FEET  
 THENCE SOUTH 04 DEGREES 12 MINUTES 02 SECONDS EAST FOR A DISTANCE OF 56.16 FEET  
 THENCE SOUTH 11 DEGREES 35 MINUTES 01 SECONDS EAST FOR A DISTANCE OF 49.78 FEET  
 THENCE SOUTH 39 DEGREES 32 MINUTES 05 SECONDS EAST FOR A DISTANCE OF 36.11 FEET  
 THENCE SOUTH 47 DEGREES 29 MINUTES 39 SECONDS EAST FOR A DISTANCE OF 169.02 FEET  
 THENCE NORTH 35 DEGREES 14 MINUTES 49 SECONDS EAST FOR A DISTANCE OF 146.64 FEET

THENCE ON A CURVE TO THE LEFT WITH A DELTA ANGLE OF 16 DEGREES 21 MINUTES 23 SECONDS, A RADIUS OF 414.00 FEET, A CHORD BEARING OF NORTH 27 DEGREES 04 MINUTES 08 SECONDS EAST, A CHORD LENGTH OF 117.78 FEET, FOR AN ARC DISTANCE OF 118.19 FEET

THENCE NORTH 89 DEGREES 42 MINUTES 45 SECONDS WEST FOR A DISTANCE OF 282.03 FEET  
 THENCE NORTH 31 DEGREES 24 MINUTES 33 SECONDS WEST FOR A DISTANCE OF 226.56 FEET TO THE POINT OF BEGINNING, CONTAINING 28 LOTS, 1 OUTLOT, AND A CALCULATED AREA OF 9.036 ACRES MORE OR LESS, INCLUDING 1.113 ACRES OF DEDICATED PUBLIC RIGHT-OF-WAY

## CERTIFICATE OF SURVEYOR (cont.)

### PARCEL 2

REFERRING TO THE NORTHEAST CORNER OF THE NORTHWEST QUARTER OF SAID SECTION 10, THENCE IN A SOUTHERLY DIRECTION, ALONG THE EAST LINE OF THE NORTHWEST QUARTER OF SAID SECTION 10, ON AN ASSUMED BEARING OF SOUTH 00 DEGREES 03 MINUTES 34 SECONDS EAST FOR A DISTANCE OF 50.00 FEET  
 THENCE NORTH 89 DEGREES 35 MINUTES 17 SECONDS WEST FOR A DISTANCE OF 379.58 FEET  
 THENCE SOUTH 00 DEGREES 24 MINUTES 43 SECONDS WEST FOR A DISTANCE OF 278.90 FEET  
 THENCE NORTH 89 DEGREES 37 MINUTES 08 SECONDS WEST FOR A DISTANCE OF 607.87 FEET  
 THENCE SOUTH 00 DEGREES 00 MINUTES 35 SECONDS WEST FOR A DISTANCE OF 323.41 FEET  
 THENCE SOUTH 23 DEGREES 13 MINUTES 30 SECONDS WEST FOR A DISTANCE OF 379.08 FEET  
 THENCE SOUTH 10 DEGREES 46 MINUTES 36 SECONDS WEST FOR A DISTANCE OF 98.15 FEET

THENCE ON A CURVE TO THE RIGHT WITH A DELTA ANGLE OF 10 DEGREES 07 MINUTES 09 SECONDS, A RADIUS OF 330.00 FEET, A CHORD BEARING OF SOUTH 74 DEGREES 09 MINUTES 47 SECONDS EAST, A CHORD LENGTH OF 58.21 FEET, FOR AN ARC DISTANCE OF 58.28 FEET TO A POINT OF TANGENCY

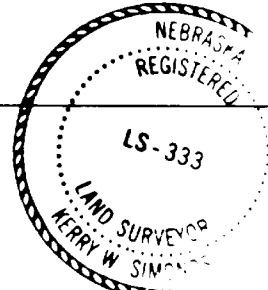
THENCE SOUTH 69 DEGREES 06 MINUTES 17 SECONDS EAST FOR A DISTANCE OF 211.54 FEET  
 THENCE SOUTH 15 DEGREES 22 MINUTES 06 SECONDS WEST FOR A DISTANCE OF 60.28 FEET  
 THENCE SOUTH 20 DEGREES 56 MINUTES 38 SECONDS WEST FOR A DISTANCE OF 120.19 FEET  
 THENCE NORTH 69 DEGREES 03 MINUTES 22 SECONDS WEST FOR A DISTANCE OF 83.76 FEET TO THE POINT OF BEGINNING

THENCE NORTH 69 DEGREES 03 MINUTES 22 SECONDS WEST FOR A DISTANCE OF 143.02 FEET  
 THENCE NORTH 81 DEGREES 25 MINUTES 32 SECONDS WEST FOR A DISTANCE OF 43.43 FEET  
 THENCE NORTH 90 DEGREES 00 MINUTES 00 SECONDS WEST FOR A DISTANCE OF 425.94 FEET  
 THENCE SOUTH 00 DEGREES 04 MINUTES 28 SECONDS EAST FOR A DISTANCE OF 337.71 FEET  
 THENCE NORTH 89 DEGREES 52 MINUTES 35 SECONDS EAST FOR A DISTANCE OF 12.57 FEET  
 THENCE SOUTH 00 DEGREES 02 MINUTES 30 SECONDS WEST FOR A DISTANCE OF 46.92 FEET  
 THENCE NORTH 81 DEGREES 58 MINUTES 55 SECONDS EAST FOR A DISTANCE OF 255.20 FEET  
 THENCE SOUTH 37 DEGREES 09 MINUTES 58 SECONDS EAST FOR A DISTANCE OF 117.74 FEET  
 THENCE SOUTH 05 DEGREES 12 MINUTES 25 SECONDS EAST FOR A DISTANCE OF 337.40 FEET  
 THENCE SOUTH 00 DEGREES 02 MINUTES 49 SECONDS EAST FOR A DISTANCE OF 229.16 FEET  
 THENCE NORTH 39 DEGREES 58 MINUTES 20 SECONDS WEST FOR A DISTANCE OF 78.03 FEET  
 THENCE SOUTH 00 DEGREES 02 MINUTES 35 SECONDS EAST FOR A DISTANCE OF 120.00 FEET  
 THENCE NORTH 89 DEGREES 57 MINUTES 25 SECONDS EAST FOR A DISTANCE OF 339.09 FEET  
 THENCE NORTH 00 DEGREES 02 MINUTES 35 SECONDS WEST FOR A DISTANCE OF 235.63 FEET  
 THENCE NORTH 10 DEGREES 24 MINUTES 44 SECONDS EAST FOR A DISTANCE OF 38.26 FEET  
 THENCE NORTH 01 DEGREES 47 MINUTES 05 SECONDS EAST FOR A DISTANCE OF 54.56 FEET  
 THENCE NORTH 00 DEGREES 02 MINUTES 56 SECONDS WEST FOR A DISTANCE OF 81.13 FEET  
 THENCE NORTH 03 DEGREES 04 MINUTES 04 SECONDS WEST FOR A DISTANCE OF 81.58 FEET  
 THENCE NORTH 05 DEGREES 12 MINUTES 32 SECONDS WEST FOR A DISTANCE OF 640.28 FEET TO THE POINT OF BEGINNING, CONTAINING 31 LOTS AND A CALCULATED AREA OF 10.859 ACRES, INCLUDING 2.394 ACRES OF DEDICATED PUBLIC RIGHT-OF-WAY

TOTAL PLAT CONTAINS 59 LOTS, 1 OUTLOT AND A CALCULATED AREA OF 19.895 ACRES MORE OR LESS, INCLUDING 3.507 ACRES OF DEDICATED PUBLIC RIGHT-OF-WAY

PERMANENT MARKERS HAVE BEEN PLACED AT BLOCK CORNERS WITHIN THE SUBDIVISION AND AT POINTS OF TANGENCY ALONG THE PERIPHERY OF EACH BLOCK, AND THE SURVEYOR WILL POST A SURETY TO ENSURE THE PLACING OF PERMANENT MARKERS AT EACH LOT AND BLOCK CORNER AND THE SURVEYOR AGREES THAT THE PLACING OF PERMANENT MARKERS WILL BE COMPLETED PRIOR TO THE CONSTRUCTION ON THE CONVEYANCE OF ANY LOT SHOWN ON THIS FINAL PLAT.

SIGNED THIS 18<sup>th</sup> DAY OF May

Kerry W. Simonds  
 KERRY W. SIMONDS  
  
 L.S. NO. 333

## APPROVAL OF PLANNING COMMISSION

THE LINCOLN-LANCASTER COUNTY PLANNING COMMISSION HAS APPROVED THIS FINAL PLAT AND ACCEPTED THE OFFER OF DEDICATION by Resolution No. PC-00605

SIGNED THIS 31 DAY May 2000

ATTEST: [Signature]

## DEDICATION

THE FOREGOING PLAT OF EDENTON NORTH 5TH ADDITION, A SUBDIVISION OF OUTLOTS 'A' AND 'B', EDENTON NORTH 4TH ADDITION, AND OUTLOT 'A', EDENTON NORTH 7TH ADDITION, LOCATED IN SECTION 10, TOWNSHIP 9 NORTH, RANGE 7 EAST OF THE 6TH P.M., AND MORE PARTICULARLY DESCRIBED IN THE SURVEYOR'S CERTIFICATE IS MADE WITH FREE CONSENT AND IN ACCORDANCE WITH THE DESIRES OF THE UNDERSIGNED, SOLE OWNER.

THE EASEMENTS SHOWN THEREON ARE HEREBY GRANTED IN PERPETUITY TO THE CITY OF LINCOLN, NEBRASKA, A MUNICIPAL CORPORATION, ~~FOR THE~~ TIME WARNER ENTERTAINMENT - ADVANCEHOUSE, PEOPLES NATURAL GAS, THEIR SUCCESSORS AND ASSIGNS, TO ALLOW ENTRY FOR THE PURPOSE OF CONSTRUCTION, RECONSTRUCTION, REPLACEMENT, REPAIR, OPERATION AND MAINTENANCE OF WIRES, CABLES, CONDUITS, FIXTURES, POLES, TOWERS, PIPES AND EQUIPMENT FOR DISTRIBUTION OF ELECTRICITY, GAS, TELEPHONE, CABLE TELEVISION, WASTEWATER COLLECTORS, STORM DRAINS, WATER MAINS AND ALL APPURTENANCES THERETO, OVER, UPON, OR UNDER ANY EASEMENTS SHOWN ON THE FOREGOING PLAT. THE CONSTRUCTION OR LOCATION OF ANY BUILDING OR STRUCTURE, EXCLUDING FENCES IN UTILITY EASEMENTS OVER, UPON, OR UNDER ANY EASEMENT SHOWN THEREON SHALL BE PROHIBITED.

ANY CONSTRUCTION OR GRADE CHANGES IN LINCOLN ELECTRIC SYSTEM (LES) TRANSMISSION LINE EASEMENT CORRIDORS ARE SUBJECT TO LES APPROVAL AND MUST BE IN ACCORDANCE WITH LES DESIGN AND SAFETY STANDARDS.

THE CITY OF LINCOLN, ITS SUCCESSORS OR ASSIGNS ARE HEREBY HELD HARMLESS FOR THE COST OF ANY REPLACEMENT OR DAMAGE TO ANY IMPROVEMENT OR VEGETATION OVER, UPON, OR UNDER ANY EASEMENT SHOWN THEREON.

RIGHT-OF-WAY, AS SHOWN ON THE DRAWING, IS HEREBY DEDICATED TO THE CITY OF LINCOLN FOR PUBLIC ACCESS.

A 24 FOOT ACCESS EASEMENT ACROSS LOT 7, BLOCK 1, IS HEREBY DEDICATED TO THE PUBLIC.

WITNESS MY HAND THIS 18 DAY OF May, 2000

Gerald M. Maddox  
 GERALD MADDOX, C.E.O.  
 LINCOLN LAND AND MORTGAGE COMPANY

## ACKNOWLEDGMENT OF NOTARY

STATE OF NEBRASKA SS  
 COUNTY OF LANCASTER SS

THE FOREGOING INSTRUMENT WAS ACKNOWLEDGED BEFORE ME BY GERALD MADDOX, KNOWN TO ME AS C.E.O. OF LINCOLN LAND AND MORTGAGE COMPANY.

THIS 18 DAY OF May, 2000

[Signature]  
 NOTARY PUBLIC  
 12-21-2000  
 COMMISSION EXPIRES

GENERAL NOTARY-State of Nebraska  
 DANIEL THANE JENSEN  
 My Comm. Exp. Dec. 21, 2002