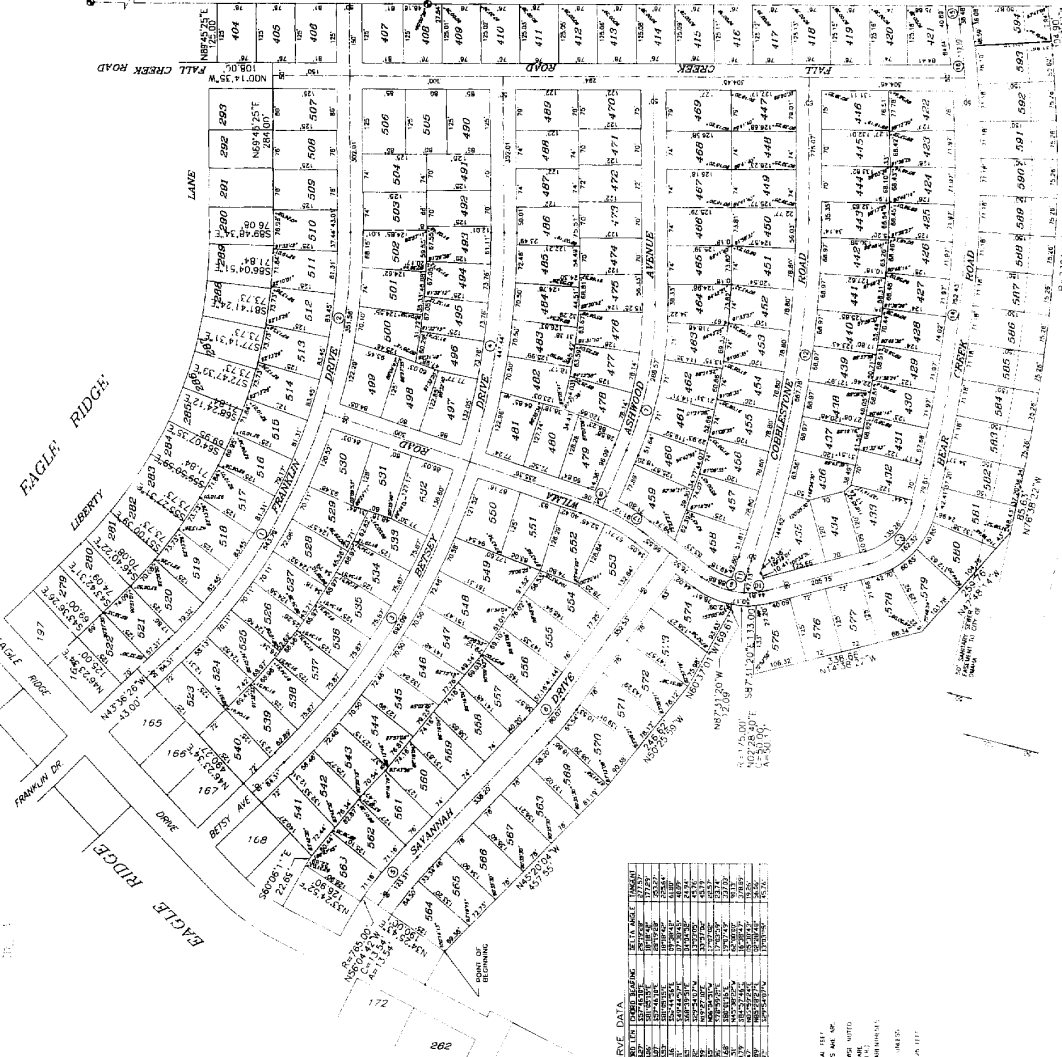


97-00413
 97 JUN -7 PM 4:39
 REGISTRATION NEEDS

EAGLE RIDGE

LOTS 404 THROUGH 594, INCLUSIVE, BEING A PLATIFIC OF PART OF TAX LOTS 4A, 6, 12 AND 13, IN THE EAST HALF OF SECTION 25, TOWNSHIP 14 NORTH, RANGE 12 EAST OF THE 6TH P.M., SARRY COUNTY, NEBRASKA.



SMALL CENTERLINE CURVE DATA

STATION	CHORD BEARING	CHORD DISTANCE	CHORD BEARING	CHORD DISTANCE	CHORD BEARING	CHORD DISTANCE	CHORD BEARING	CHORD DISTANCE
100	N 89° 59' 54" W	100.00	S 89° 59' 54" E	100.00	N 89° 59' 54" W	100.00	S 89° 59' 54" E	100.00
101	N 89° 59' 54" W	100.00	S 89° 59' 54" E	100.00	N 89° 59' 54" W	100.00	S 89° 59' 54" E	100.00
102	N 89° 59' 54" W	100.00	S 89° 59' 54" E	100.00	N 89° 59' 54" W	100.00	S 89° 59' 54" E	100.00
103	N 89° 59' 54" W	100.00	S 89° 59' 54" E	100.00	N 89° 59' 54" W	100.00	S 89° 59' 54" E	100.00
104	N 89° 59' 54" W	100.00	S 89° 59' 54" E	100.00	N 89° 59' 54" W	100.00	S 89° 59' 54" E	100.00
105	N 89° 59' 54" W	100.00	S 89° 59' 54" E	100.00	N 89° 59' 54" W	100.00	S 89° 59' 54" E	100.00
106	N 89° 59' 54" W	100.00	S 89° 59' 54" E	100.00	N 89° 59' 54" W	100.00	S 89° 59' 54" E	100.00
107	N 89° 59' 54" W	100.00	S 89° 59' 54" E	100.00	N 89° 59' 54" W	100.00	S 89° 59' 54" E	100.00
108	N 89° 59' 54" W	100.00	S 89° 59' 54" E	100.00	N 89° 59' 54" W	100.00	S 89° 59' 54" E	100.00
109	N 89° 59' 54" W	100.00	S 89° 59' 54" E	100.00	N 89° 59' 54" W	100.00	S 89° 59' 54" E	100.00
110	N 89° 59' 54" W	100.00	S 89° 59' 54" E	100.00	N 89° 59' 54" W	100.00	S 89° 59' 54" E	100.00

- NOTES**
- ALL DISTANCES ARE SHOWN IN DECIMAL FEET.
 - THE DISTANCES ARE SHOWN IN DECIMAL FEET.
 - ALL MEASUREMENTS WERE MADE BY THE SURVEYOR.
 - THE SURVEY WAS MADE BY THE SURVEYOR.
 - THE SURVEY WAS MADE BY THE SURVEYOR.
 - THE SURVEY WAS MADE BY THE SURVEYOR.
 - THE SURVEY WAS MADE BY THE SURVEYOR.
 - THE SURVEY WAS MADE BY THE SURVEYOR.

SECTION

THE STATE OF NEBRASKA, COUNTY OF SARRY, BEING A PLATIFIC OF PART OF TAX LOTS 4A, 6, 12 AND 13, IN THE EAST HALF OF SECTION 25, TOWNSHIP 14 NORTH, RANGE 12 EAST OF THE 6TH P.M., SARRY COUNTY, NEBRASKA.

SECTION

THE STATE OF NEBRASKA, COUNTY OF SARRY, BEING A PLATIFIC OF PART OF TAX LOTS 4A, 6, 12 AND 13, IN THE EAST HALF OF SECTION 25, TOWNSHIP 14 NORTH, RANGE 12 EAST OF THE 6TH P.M., SARRY COUNTY, NEBRASKA.

Oct 14, 1996

NOTARY PUBLIC STATE OF NEBRASKA
 WALT SLOBOTSKI
 My Comm. Exp. Aug 10, 1997

NOTARY PUBLIC STATE OF NEBRASKA
 WALT SLOBOTSKI
 My Comm. Exp. Aug 10, 1997

CITY OF PAPHOS
 NEBRASKA

NOTARY PUBLIC STATE OF NEBRASKA
 WALT SLOBOTSKI
 My Comm. Exp. Aug 10, 1997

NOTARY PUBLIC STATE OF NEBRASKA
 WALT SLOBOTSKI
 My Comm. Exp. Aug 10, 1997