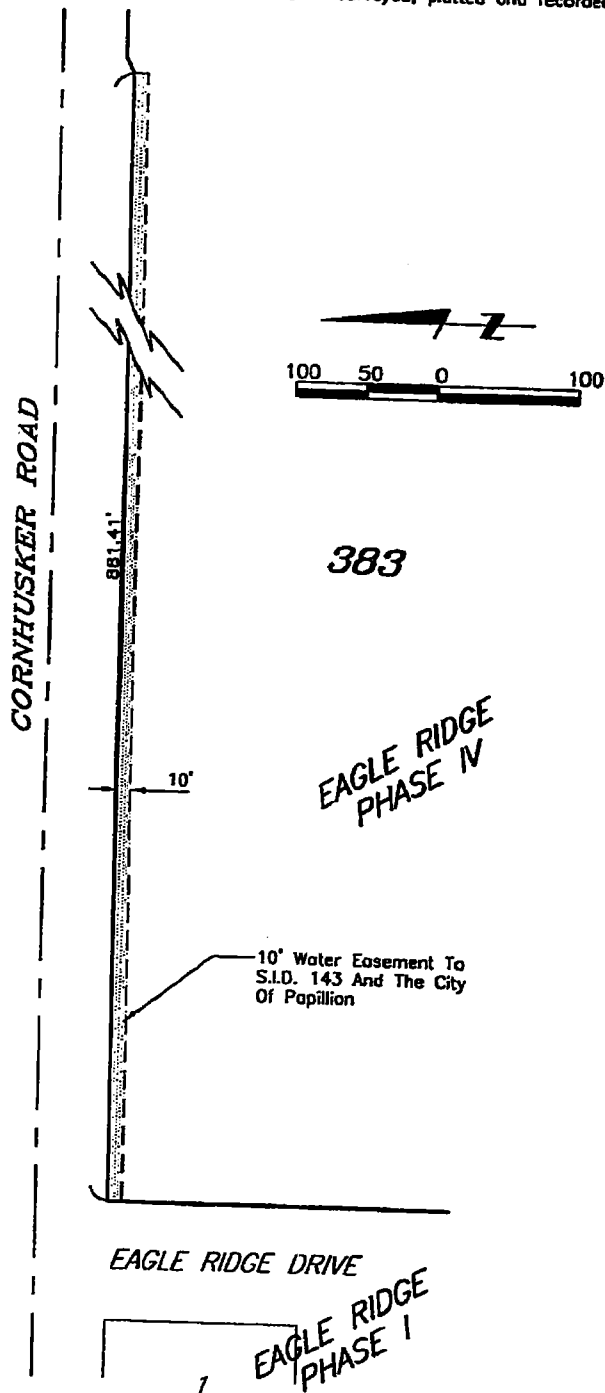


99-01607A

EXHIBIT A

LEGAL DESCRIPTION

A permanent easement for the construction and maintenance of water pipes and related facilities over the North ten feet (10') of the west 881.41 of Lot 383, EAGLE RIDGE, a subdivision, as surveyed, platted and recorded in Sarpy County, Nebraska.



Book _____ Page _____ Date 1/15/97 Dwn.By EJK Job Number 87962-4270

	lamp, rynearson & associates, inc.			
	engineers	surveyors	planners	
14747 california street	omaha, nebraska	68164-1979	402-498-2498	FAX 402-498-2730

001607