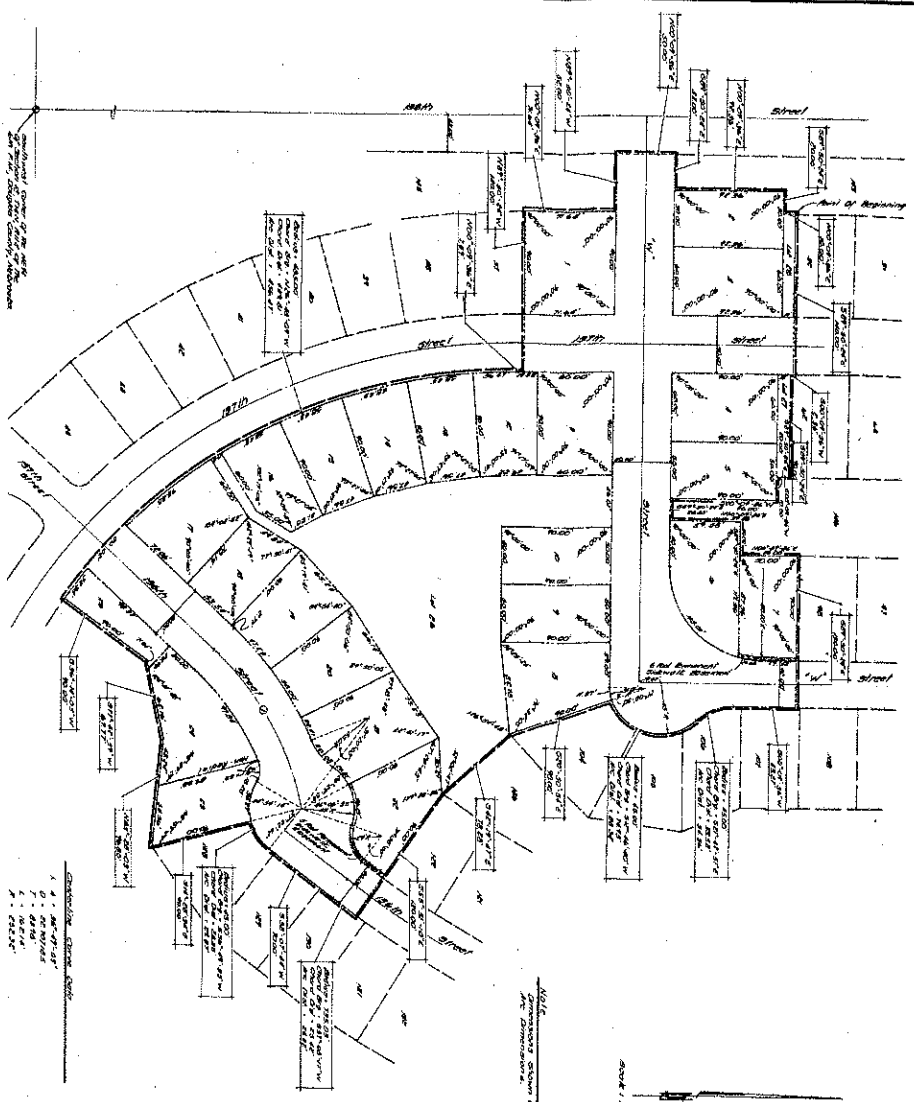


1563
697
3-2-1977

DISCOVERY REPLAT

LOTS 1 THRU 28, INCLUSIVE
BEING A REPLAT OF LOTS 33 THRU 36, INCLUSIVE; LOTS 50 THRU 61, INCLUSIVE; LOTS 99 THRU 103, INCLUSIVE; LOTS 123 THRU 127, INCLUSIVE AND PART OF LOTS 145 AND 146, DISCOVERY, A SUB-DIVISION AS SURVEYED, PLATTED AND RECORDED IN DOUGLAS COUNTY, NEBRASKA.



SECTION 11, CERTIFICATE

I, **SEYMOUR C. THOMPSON**, Surveyor General for the State of Nebraska, do hereby certify that the above plat was prepared by **THOMPSON, DRESSSEN & DORNER**, Consulting Engineers and Land Surveyors, who are duly licensed and qualified to perform such duties, and that the same is a true and correct copy of the original plat as shown to me by the said **THOMPSON, DRESSSEN & DORNER**, and that the same is in accordance with the laws of the State of Nebraska, and that the same is a true and correct copy of the original plat as shown to me by the said **THOMPSON, DRESSSEN & DORNER**, and that the same is in accordance with the laws of the State of Nebraska.

Seymour C. Thompson
Surveyor General for the State of Nebraska

SECTION 12, CERTIFICATE

I, **SEYMOUR C. THOMPSON**, Surveyor General for the State of Nebraska, do hereby certify that the above plat was prepared by **THOMPSON, DRESSSEN & DORNER**, Consulting Engineers and Land Surveyors, who are duly licensed and qualified to perform such duties, and that the same is a true and correct copy of the original plat as shown to me by the said **THOMPSON, DRESSSEN & DORNER**, and that the same is in accordance with the laws of the State of Nebraska, and that the same is a true and correct copy of the original plat as shown to me by the said **THOMPSON, DRESSSEN & DORNER**, and that the same is in accordance with the laws of the State of Nebraska.

Seymour C. Thompson
Surveyor General for the State of Nebraska

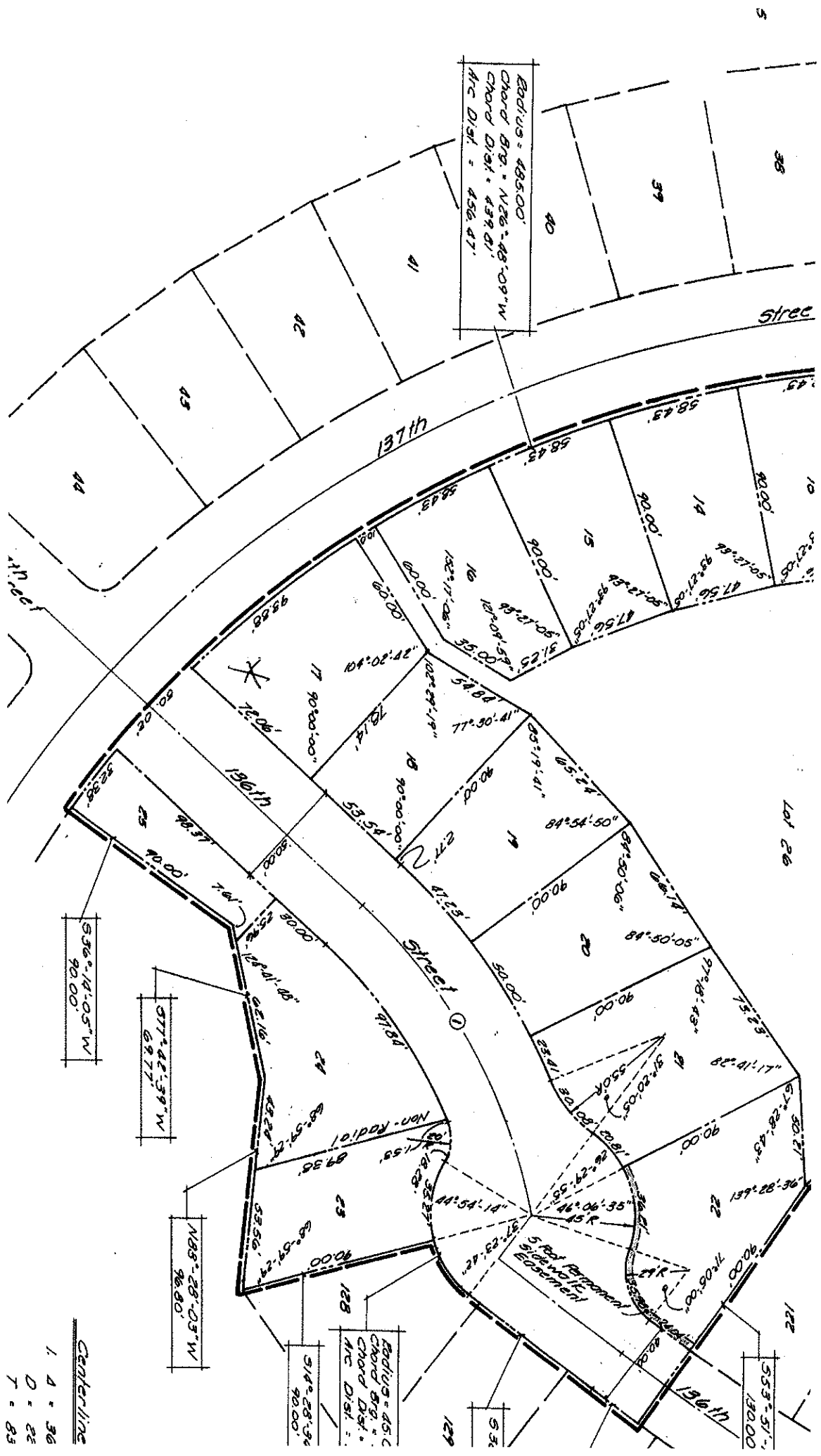
SECTION 13, CERTIFICATE

I, **SEYMOUR C. THOMPSON**, Surveyor General for the State of Nebraska, do hereby certify that the above plat was prepared by **THOMPSON, DRESSSEN & DORNER**, Consulting Engineers and Land Surveyors, who are duly licensed and qualified to perform such duties, and that the same is a true and correct copy of the original plat as shown to me by the said **THOMPSON, DRESSSEN & DORNER**, and that the same is in accordance with the laws of the State of Nebraska, and that the same is a true and correct copy of the original plat as shown to me by the said **THOMPSON, DRESSSEN & DORNER**, and that the same is in accordance with the laws of the State of Nebraska.

Seymour C. Thompson
Surveyor General for the State of Nebraska

THOMPSON, DRESSSEN & DORNER
Consulting Engineers & Land Surveyors

Discovery Plat
1900
1563
697
3-2-1977



Radius = 485.00'
 Chord Brg. = N86°48'05"W
 Chord Dist. = 439.01'
 Arc Dist. = 456.47'

536°-18'-05"W
 90.00'

577°-42'-59"W
 69.77'

N83°-28'-03"W
 96.80'

Radius = 45.0'
 Chord Brg. =
 Chord Dist. =
 Arc Dist. =
 514°-28'-96
 90.00'

533°-31'-
 130.00'

Centerline
 1 - 4 - 36
 0 - 2 - 23
 7 - 8 - 83