

201 234
 Final Plat
DAY ACRES 2ND ADDITION

PART OF THE NW 1/4 OF THE NW 1/4,
 SECTION 18, T 12 N, R 5 E, NEB. 101
 GARDNER COUNTY, NEBRASKA

COMMITTEE JURISDICTION
 Pursuant to the provisions of the Nebraska Subdivision Act, the following persons are hereby designated as the committee for the purpose of this plat:

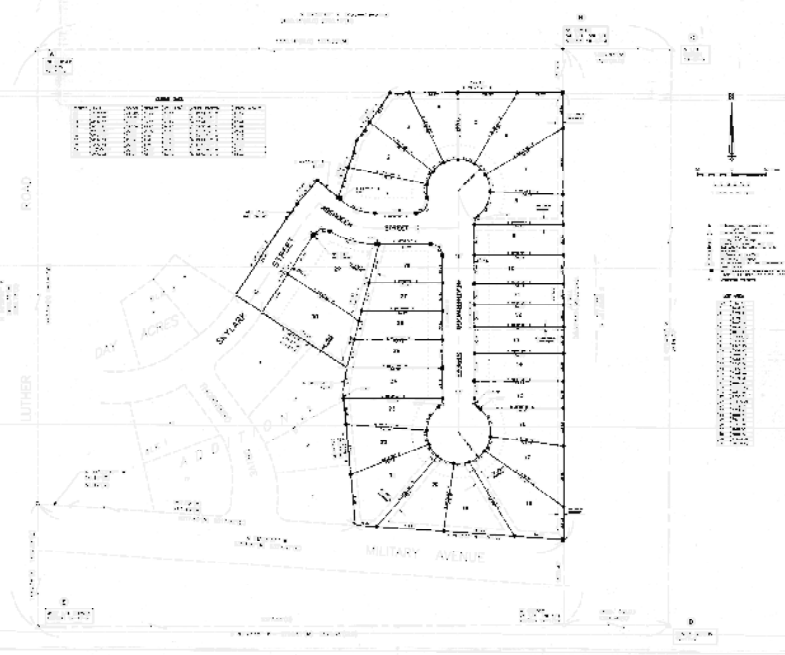
LEGAL DESCRIPTION
 This plat is a subdivision of the NW 1/4 of the NW 1/4 of Section 18, Township 12 North, Range 5 East, Nebraska 101, Gardner County, Nebraska.



PLAT TO BE RECORDED
 This plat is a subdivision of the NW 1/4 of the NW 1/4 of Section 18, Township 12 North, Range 5 East, Nebraska 101, Gardner County, Nebraska, and is subject to the provisions of the Nebraska Subdivision Act.

PLAT TO BE RECORDED
 This plat is a subdivision of the NW 1/4 of the NW 1/4 of Section 18, Township 12 North, Range 5 East, Nebraska 101, Gardner County, Nebraska, and is subject to the provisions of the Nebraska Subdivision Act.

- PLAT TO BE RECORDED**
1. The plat is a subdivision of the NW 1/4 of the NW 1/4 of Section 18, Township 12 North, Range 5 East, Nebraska 101, Gardner County, Nebraska.
 2. The plat is subject to the provisions of the Nebraska Subdivision Act.
 3. The plat is subject to the provisions of the Nebraska Subdivision Act.
 4. The plat is subject to the provisions of the Nebraska Subdivision Act.
 5. The plat is subject to the provisions of the Nebraska Subdivision Act.
 6. The plat is subject to the provisions of the Nebraska Subdivision Act.
 7. The plat is subject to the provisions of the Nebraska Subdivision Act.
 8. The plat is subject to the provisions of the Nebraska Subdivision Act.
 9. The plat is subject to the provisions of the Nebraska Subdivision Act.
 10. The plat is subject to the provisions of the Nebraska Subdivision Act.



STATE OF NEBRASKA
 DEPARTMENT OF REVENUE
 DIVISION OF LAND RECORDS



Lot No.	Area (Acres)
1	0.10
2	0.10
3	0.10
4	0.10
5	0.10
6	0.10
7	0.10
8	0.10
9	0.10
10	0.10
11	0.10
12	0.10
13	0.10
14	0.10
15	0.10
16	0.10
17	0.10
18	0.10
19	0.10
20	0.10
21	0.10
22	0.10
23	0.10
24	0.10
25	0.10
26	0.10
27	0.10
28	0.10
29	0.10
30	0.10
31	0.10
32	0.10
33	0.10
34	0.10
35	0.10
36	0.10
37	0.10
38	0.10
39	0.10
40	0.10
41	0.10
42	0.10
43	0.10
44	0.10
45	0.10
46	0.10
47	0.10
48	0.10
49	0.10
50	0.10
51	0.10
52	0.10
53	0.10
54	0.10
55	0.10
56	0.10
57	0.10
58	0.10
59	0.10
60	0.10
61	0.10
62	0.10
63	0.10
64	0.10
65	0.10
66	0.10
67	0.10
68	0.10
69	0.10
70	0.10
71	0.10
72	0.10
73	0.10
74	0.10
75	0.10
76	0.10
77	0.10
78	0.10
79	0.10
80	0.10
81	0.10
82	0.10
83	0.10
84	0.10
85	0.10
86	0.10
87	0.10
88	0.10
89	0.10
90	0.10
91	0.10
92	0.10
93	0.10
94	0.10
95	0.10
96	0.10
97	0.10
98	0.10
99	0.10
100	0.10